

# **ICD-10 Follow On Class 1 Software Remediation Project**

## **Event Capture**

## **Graphical User Interface**

**Application Version 2.0**

## **Release Notes**

**EC\*2.0\*114**



**July 2014**

**Department of Veterans Affairs  
Office of Information and Technology  
Product Development**



## Table of Contents

|   |           |
|---|-----------|
| <b>1. Introduction .....</b>                          | <b>1</b>  |
| 1.1. Purpose.....                                     | 1         |
| 1.2. Background .....                                 | 1         |
| 1.3. Scope of Changes.....                            | 2         |
| 1.4. Documentation .....                              | 2         |
| <b>2. Primary and Secondary Diagnosis Search.....</b> | <b>3</b>  |
| 2.1. Diagnosis Search and Display .....               | 3         |
| 2.2. Spreadsheet and Diagnosis Codes .....            | 4         |
| <b>3. Updated Screens .....</b>                       | <b>5</b>  |
| 3.1. ICD Diagnosis Code Display .....                 | 5         |
| 3.2. Enter/Edit Patient Procedures Summary .....      | 6         |
| 3.3. View Patients for this Procedure .....           | 7         |
| 3.4. View Selected Patients .....                     | 8         |
| 3.5. PCE Data Summary Report .....                    | 9         |
| <b>4. Technical Information .....</b>                 | <b>10</b> |
| 4.1. Routines.....                                    | 10        |
| 4.2. Online Help for ICD-10 Codes .....               | 10        |

*(This page included for two-sided copying.)*

# 1. Introduction

## 1.1. Purpose

The purpose of these Release Notes is to identify enhancements to the Event Capture (EC) package contained in patch EC\*2\*114.

## 1.2. Background

On January 16, 2009, the Centers for Medicare & Medicaid Services (CMS) released a final rule for replacing the 30-year-old International Classification of Diseases, Ninth Revision, Clinical Modification (ICD-9-CM) code set with International Classification of Diseases, Tenth Revision, Clinical Modification (ICD-10-CM) and International Classification of Diseases, Tenth Revision, Procedure Coding System (ICD-10-PCS) with dates of service or dates of discharge for inpatients that occur on or after the ICD-10 Activation Date.

The classification system consists of more than 68,000 codes, compared to approximately 13,000 ICD-9-CM codes. The system also expands the number of characters allotted from five to seven alphanumeric characters. This value does not include the decimal point, which follows the third character for the ICD-10-CM code set.

The ICD-10-CM code set has the potential to reveal more about quality of care, so that data can be used in a more meaningful way to better understand complications, better design clinically robust algorithms, and better track the outcomes of care. ICD-10-CM also incorporates greater specificity and clinical detail to provide information for clinical decision-making and outcomes research.

**Note:** The Event Capture Graphical User Interface (GUI) does not use ICD-10-PCS procedure codes.

### ICD-9-CM and ICD-10-CM Comparison

| ICD-9-CM                                 | ICD-10-CM   |
|--|---|
| 13,000 codes (approximately)             | 68,000 codes (approximately)  |
| 3-5 characters                           | 3-7 characters (not including the decimal)                                    |
| Character 1 is numeric or alpha (E or V) | Character 1 is alpha; character 2 is numeric                                  |
| Characters 2 - 5 are numeric             | Characters 3-7 are alpha or numeric (alpha characters are not case sensitive) |
| Decimal after first 3 characters         | Same  |

## 1.3. Scope of Changes

---

**NOTE: Existing ICD-9 functionality has not changed.**

---

Patch EC\*2\*114 makes the following changes to the Event Capture GUI application:

- Allows for entry, display, search (lookup), print, and storage of the ICD-10-CM diagnosis code set.
- Provides ability to search and display up to 100 ICD-10 diagnoses at a time.
- Replaces ICD-9-CM with ICD-10-CM as the diagnostic coding system for Event Capture procedures with a procedure date on or after the ICD-10 Activation Date
- Accommodates the period of time when the Event Capture GUI requires the use of dual code sets (ICD-9-CM and ICD-10-CM) for outpatient dates of service and inpatient discharge dates *prior to* and *following* the ICD-10 Activation Date as well as for reporting and research purposes.

## 1.4. Documentation

The Event Capture manuals are posted on the VistA Documentation Library (VDL) <http://www.va.gov/vdl/application.asp?appid=39> page.

The following Event Capture user manuals are updated with changes for EC\*2\*114:

- Installation Guide
- Technical Manual
- User Manual

The following manual does not exist for this package:

- Security Guide

---

**NOTE: Security Information is contained within the *Event Capture GUI Technical Manual*.**

---

## 2. Primary and Secondary Diagnosis Search

---

**NOTE: Existing ICD-9 functionality has not changed.**

---

The Event Capture GUI determines which ICD code set version to use based on the associated dates for the event and the ICD-10 Activation Date. The “Date of Interest” is equivalent to the procedure date in the Event Capture package.

**Note:** Specifically, the DATE/TIME OF PROCEDURE field (#2) of the EVENT CAPTURE PATIENT file (#721) drives which of the ICD diagnosis code sets is added and stored for each procedure.

As part of EC\*2\*114, there is no change to the partial or full code search functionality for the ICD diagnosis search/lookup in Event Capture.

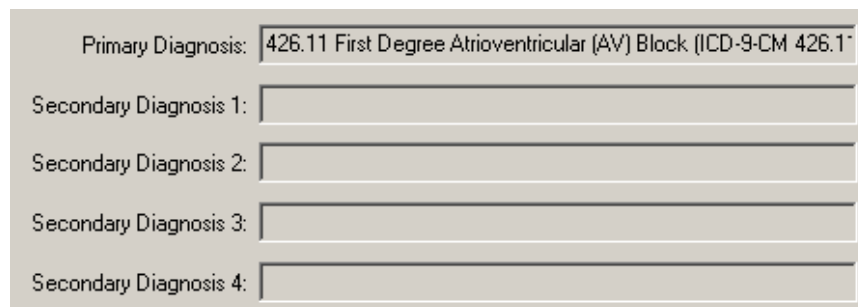
### 2.1. Diagnosis Search and Display

The Event Capture main menu bar Function tab options *Data Entry* and *Spreadsheet* allow ICD-10 diagnosis codes to be added and stored.

The Data Entry Menu of the Event Capture main menu bar Function tab allows the user to update the procedures with a primary ICD diagnosis and from zero to four secondary diagnoses through these options:

- *Data Entry by Patient – Enter/Edit Patient Procedure(s)*
- *Data Entry by Procedure – Batch (Same Procedure, Multiple Patients)*
- *Multiple Dates/Procs – Multiple Dates/Multiple Procedures*

#### Example of Previous ICD Code Display



The screenshot shows a form with five input fields for ICD diagnosis codes. The first field, labeled 'Primary Diagnosis:', contains the text '426.11 First Degree Atrioventricular (AV) Block (ICD-9-CM 426.11)'. The remaining four fields, labeled 'Secondary Diagnosis 1:' through 'Secondary Diagnosis 4:', are currently empty.

### Example of Updated Search Result after the ICD-10 Activation Date

Diagnoses

Primary: D50.9 Iron Deficiency Anemia, unspecified (ICD-10-CM D50.9)

Secondary Dx 1: A08.11 Acute Gastroenteropathy due to Norwalk Agent (ICD-10-

Secondary Dx 2: B52.0 Plasmodium Malariae Malaria with Nephropathy (ICD-10-

Secondary Dx 3: E52. Niacin Deficiency [Pellagra] (ICD-10-CM E52.)

Secondary Dx 4:

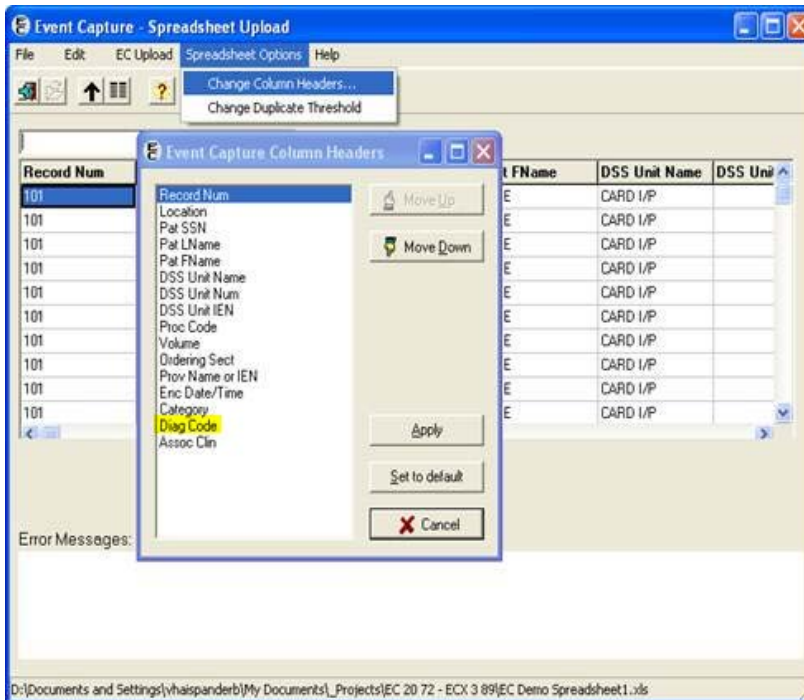
- F10.10 Alcohol Abuse, Uncomplicated (ICD-10-CM F10.10)
- F10.120 Alcohol Abuse with Intoxication, Uncomplicated (ICD-10-
- F10.121 Alcohol Abuse with Intoxication Delirium (ICD-10-CM F1
- F10.129 Alcohol Abuse with Intoxication, unspecified (ICD-10-CM
- F10.14 Alcohol Abuse with Alcohol-Induced Mood Disorder (ICD
- F10.150 Alcohol Abuse with Alcohol-Induced Psychotic Disorder
- F10.151 Alcohol Abuse with Alcohol-Induced Psychotic Disorder
- F10.159 Alcohol Abuse with Alcohol-Induced Psychotic Disorder

## 2.2. Spreadsheet and Diagnosis Codes

The Event Capture GUI now validates ICD-9 and ICD-10 codes based on the date of the event and the ICD-10 Activation Date.

There are no changes to the spreadsheet feature in Event Capture GUI. The spreadsheet column, Diag Code, remains unchanged.

### Spreadsheet Diag Codes Column





### 3. Updated Screens

#### 3.1. ICD Diagnosis Code Display

The View Patient Record Details screen displays the primary ICD diagnosis and zero to four secondary diagnoses when the user chooses View Details from the View Selected Patients tab.

##### View Patient Record Details

**Event Capture - View Patient Record Details**

File Edit View Help

Selection Criteria  
Location: CHEYENNE VAMROC  
DSS Unit: ATZ1 CARE COORDINATION  
Category: No Categories

Procedure Date / Time  
10 APR 2014 @1115 ...  
+ Add Date / Time

Selected Dates / Times  
10 APR 2014 @1115  
- Delete Date / Time

Providers | Procedures | Select Patient | **View Selected Patients** | Records Pending Filing

Patient: TEST, CENSUSONE (666-54-3232) DOB: 8/21/1966  
Status: Outpatient  
Eligibility Code: NSC

|                            |                                |  |
|----------------------------|--------------------------------|--|
| Service Connected?<br>N/A  | SW Asia Conditions?<br>N/A     | Ordering Section:<br>SOCIAL WORK   |
| Combat Veteran?<br>N/A     | Military Sexual Trauma?<br>N/A | Associated Clinic:<br>CHY CCHT MONTHLY MONITOR-X   |
| Agent Orange?<br>N/A       | Head/Neck Cancer?<br>N/A       | Primary Diagnosis:<br>E11.9 Type 2 Diabetes Mellitus without Complications (ICD-10-C)            |
| Ionizing Radiation?<br>N/A | Project 112 / SHAD?<br>N/A     | Secondary Diagnosis 1:<br>J47.0 Bronchiectasis with Acute lower Respiratory Infection (ICD-10-C) |
|                            |                                | Secondary Diagnosis 2:<br>M00.00 Staphylococcal Arthritis, unspecified Joint (ICD-10-CM M)       |
|                            |                                | Secondary Diagnosis 3:<br>A79.0 Trench Fever * (ICD-10-CM A79.0)                                 |
|                            |                                | Secondary Diagnosis 4:<br>F55.4 Abuse of Vitamins (ICD-10-CM F55.4)                              |

X Close Patient View

OK Cancel Save Topic Help

## 3.2. Enter/Edit Patient Procedures Summary

The Patient Summary screen displays ICD primary diagnoses for a single patient before and after patient procedures have been revised.

### Enter/Edit Patient Procedures Summary

Event Capture - Enter/Edit Patient Procedures

File Edit Sort View Help

Location: CHEYENNE VAMROC DSS Unit: ATZ1 CARE COORDINATION

Date Range View of Patient's Recorded Procedures  
 Procedures From: 10 MAR 2014 Procedures Through: 10 APR 2014

Patient Identifier  
 TEST,CENSUSONE (666-54-3232) DOB: 8/21/1966 Search

| Categ.. | Procedure Name               | Date and Time     | Volume | Associated Cli..           | Ordering Secti.. | Primary Diagnosis  | Primar... |
|---------|------------------------------|-------------------|--------|----------------------------|------------------|--|-----------|
|         | 99090 COMPUTER DATA ANALYSIS | 07 APR 2014 @1124 | 1      | CHY CCHT MONTHLY MONITOR-X | SOCIAL WORK      | E11.9 Type 2 diabetes mellitus without complications (ICD10) | BAIBA     |
|         | 99090 COMPUTER DATA ANALYSIS | 08 APR 2014 @1124 | 1      | CHY CCHT MONTHLY MONITOR-X | SOCIAL WORK      | A96.2 Lassa fever (ICD10)                                    | BAIBA     |

Close Add Update Delete Topic Help

### 3.3. View Patients for this Procedure

The View Patients screen displays the primary ICD diagnosis when single procedures are updated for multiple patients.

#### View Patients for this Procedure

Event Capture - View Patients for this Procedure ✕

Location:       DSS Unit:

Category:       Procedure:

| Patient Name   | Date and Time     | Primary Diagnosis  | Ordering Section | Associated Clinic         |
|----------------|-------------------|--|------------------|---------------------------|
| TEST,CENSUSONE | APR 10,2014@11:29 | E11.9 Type 2 diabetes mellitus without complications (ICD10) | SOCIAL WORK      | CHY CCHT MONTHLY MONITORX |

### 3.4. View Selected Patients

The View Selected Patients screen displays primary ICD diagnoses when multiple procedures are updated for multiple patients for multiple dates.

#### View Selected Patients

Event Capture - Multiple Dates / Multiple Procedures

File Edit View Help

Selection Criteria

Location: CHEYENNE VAMROC

DSS Unit: ATZ1 CARE COORDINATION

Category: No Categories

Procedure Date / Time: 10 APR 2014 @1133 ...

Selected Dates / Times: 10 APR 2014 @1133

+ Add Date / Time

- Delete Date / Time

Providers | Procedures | Select Patient | **View Selected Patients** | Records Pending Filing

| Patient  | Status     | Associated Clinic          | Primary Diagnosis   |
|--|------------|----------------------------|---|
| TEST_CENSUSONE (666-54-3232) DOB: 8/21/1966    | Outpatient | CHY CCHT MONTHLY MONITOR-X | E11.9 Type 2 Diabetes Mellitus without Complications (ICD-10-CM E11.9)  |
| TEST_CENSUSTHREE (666-54-3456) DOB: 11/12/1963 | Inpatient  | CHY CCHT MONTHLY MONITOR-X | E11.00 Type 2 Diabetes Mellitus with Hyperosmolarity without Nonketotic |

- Delete Patient

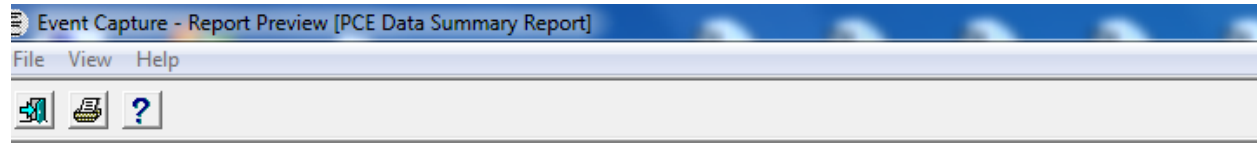
View Details

OK Cancel Save Topic Help

## 3.5. PCE Data Summary Report

The PCE Data Summary Report prints the primary ICD diagnosis code and from zero up to four secondary ICD diagnosis codes.

### PCE Data Summary Report



ECS/PCE PATIENT SUMMARY FOR TEST,CENSUSONE  
FROM Mar 11, 2014 TO Apr 10, 2014

| PROCEDURE DATE/TIME<br>LOCATION     | PROCEDURE NAME SENT (VOLUME)<br>CLINIC (DSS ID)<br>DIAGNOSIS                                 | PROVIDER<br>CPT CODE<br>PROCEDURE (CPT) MODIFIER |
|-------------------------------------|--|--|
| Apr 07, 2014@11:24<br>CHEYENNE VAMC | 99090 COMPUTER DATA ANALYSIS (1)<br>CHY CCHT MONTHLY MONITOR-X (683)<br>Primary DX: E11.9    | DANA BAIBAK<br>99090                             |
| Apr 08, 2014@11:24<br>CHEYENNE VAMC | 99090 COMPUTER DATA ANALYSIS (1)<br>CHY CCHT MONTHLY MONITOR-X (683)<br>Primary DX: A96.2    | DANA BAIBAK<br>99090                             |
| Apr 09, 2014@11:24<br>CHEYENNE VAMC | 99090 COMPUTER DATA ANALYSIS (1)<br>CHY CCHT MONTHLY MONITOR-X (683)<br>Primary DX: S00.32XS | DANA BAIBAK<br>99090                             |
| Apr 10, 2014@06:00<br>CHEYENNE VAMC | 99090 COMPUTER DATA ANALYSIS (1)<br>CHY CCHT MONTHLY MONITOR-X (683)<br>Primary DX: W34.011S | DANA BAIBAK<br>99090                             |
| Apr 10, 2014@11:29<br>CHEYENNE VAMC | 99090 COMPUTER DATA ANALYSIS (1)<br>CHY CCHT MONTHLY MONITOR-X (683)<br>Primary DX: E11.9    | EMMETT W ABERNETHY<br>99090                      |

Volume totals may represent days, minutes, numbers of procedures  
and/or a combination of these.

## 4. Technical Information

### 4.1. Routines

Some VistA routines the Event Capture GUI uses were modified to replace direct global reads and old Application Program Interfaces (APIs) with new Standards and Terminology Services (STS) APIs and Lexicon APIs wherever possible.

The following APIs are referenced:

- \$\$SINFO^ICDEX supported by ICR #5747
- \$\$ICDDX^ICDEX supported by ICR #5747
- \$\$IMPDATE^LEXU supported by ICR #5679

### 4.2. Online Help for ICD-10 Codes

Help text is included for prompts related to ICD-10 codes. Press **F1** or click ? **Help Topic** to view the online help.