



Update_2_0_79

Clinical Reminders

VA-Acute Stroke Templates

Install Guide

August 2019

Product Development
Office of Information Technology
Department of Veterans Affairs

Table of Contents

INTRODUCTION	1
INSTALL DETAILS	5
INSTALL EXAMPLE.....	6
POST INSTALLATION.....	11

Introduction

This reminder update file contains three templates that can be used to document treatment for acute stroke. There is one nurse template, VA-ACUTE STROKE NURS RAPID ASSESSMENT/TREATMENT and two provider templates, VA-ACUTE STROKE PROVIDER 24 HOUR POST-ALTEPLASE FOLLOW-UP and VA-ACUTE STROKE PROVIDER TEMPLATE.

These templates were developed for facilities participating in the VA National Telestroke Program (NTSP). However, all VA facilities should use these templates to improve documentation of acute stroke care.

UPDATE_2_0_79 contains 1 Reminder Exchange entry:
UPDATE_2_0_79 VA-ACUTE STROKE TEMPLATES

The exchange file contains the following components:

TIU TEMPLATE FIELD

DATE & TIME (REQ)
TELESTROKE YES NO N/A (REQ)
TEXT (1-70) REQUIRED
TELESTROKE DATE BLANK
WORD 2 LINES1 REQ
TEXT-50
ALLFT10C
ALLFT5C
EDIT 25
CR TS ASRA-IV CATH SITE
CR TS ASRA IV GAUGE
DATE & TIME (NON REQ)
TELESTROKE FREE TEXT 10
TELESTROKE DATE/TIME
TELESTROKE FREE TEXT 4
WORD PROC 50X2
VA-TS NIHSS NUMBER 0-4
VA-TS NIHSS NUMBER 0-2
VA-TS NIHSS NUMBER 0-3
WORD PROCESSING SHORT
TEXT (1-20 CHAR)
WORD 4 LINES
TEXT (1-60 CHAR)

HEALTH FACTORS

VA-REMINDER UPDATES
VA-UPDATE_2_0_79
VA-ACUTE STROKE TREATMENT/MONITORING
VA-ACUTE STROKE SWALLOW SCRIN-FAILED

VA-ACUTE STROKE SWALLOW SCRNPASSED
VA-ACUTE STROKE RAPID ASSESSMENT
VA-ACUTE STROKE TRF OUT-OTHER
VA-ACUTE STROKE TRF OUT-CRANIECTOMY
VA-ACUTE STROKE ALTEPLASE NOT GIVEN
VA-ACUTE STROKE ALTEPLASE-60 MIN CHECK
VA-ACUTE STROKE ALTEPLASE-45 MIN CHECK
VA-ACUTE STROKE ALTEPLASE-30 MIN CHECK
VA-ACUTE STROKE ALTEPLASE-15 MIN CHECK
VA-ACUTE STROKE ALTEPLASE GIVEN
VA-ACUTE STROKE ENDOVASCULAR TX
VA-ACUTE STROKE ENDOVASC TX YES
VA-ACUTE STROKE ENDOVASC TX-NO TRF
VA-ACUTE STROKE ENDOVASC TX NO
VA-ACUTE STROKE NIHSS INITIAL SCORE
VA-ACUTE STROKE NIHSS INATTENTION
VA-ACUTE STROKE NIHSS INATTENTION 2
VA-ACUTE STROKE NIHSS INATTENTION 1
VA-ACUTE STROKE NIHSS INATTENTION 0
VA-ACUTE STROKE NIHSS DYSARTHRIA
VA-ACUTE STROKE NIHSS DYSARTHRIA N/A
VA-ACUTE STROKE NIHSS DYSARTHRIA 2
VA-ACUTE STROKE NIHSS DYSARTHRIA 1
VA-ACUTE STROKE NIHSS DYSARTHRIA 0
VA-ACUTE STROKE NIHSS LANGUAGE
VA-ACUTE STROKE NIHSS LANGUAGE 3
VA-ACUTE STROKE NIHSS LANGUAGE 2
VA-ACUTE STROKE NIHSS LANGUAGE 1
VA-ACUTE STROKE NIHSS LANGUAGE 0
VA-ACUTE STROKE NIHSS SENSORY
VA-ACUTE STROKE NIHSS SENSORY 2
VA-ACUTE STROKE NIHSS SENSORY 1
VA-ACUTE STROKE NIHSS SENSORY 0
VA-ACUTE STROKE NIHSS ATAXIA
VA-ACUTE STROKE NIHSS ATAXIA N/A
VA-ACUTE STROKE NIHSS ATAXIA 2
VA-ACUTE STROKE NIHSS ATAXIA 1
VA-ACUTE STROKE NIHSS ATAXIA 0
VA-ACUTE STROKE NIHSS MOTOR LEG
VA-ACUTE STROKE NIHSS RIGHT LEG N/A
VA-ACUTE STROKE NIHSS RIGHT LEG 4
VA-ACUTE STROKE NIHSS RIGHT LEG 3
VA-ACUTE STROKE NIHSS RIGHT LEG 2
VA-ACUTE STROKE NIHSS RIGHT LEG 1
VA-ACUTE STROKE NIHSS RIGHT LEG 0
VA-ACUTE STROKE NIHSS LEFT LEG N/A
VA-ACUTE STROKE NIHSS LEFT LEG 4
VA-ACUTE STROKE NIHSS LEFT LEG 3
VA-ACUTE STROKE NIHSS LEFT LEG 2
VA-ACUTE STROKE NIHSS LEFT LEG 1
VA-ACUTE STROKE NIHSS LEFT LEG 0

VA-ACUTE STROKE NIHSS MOTOR ARM
VA-ACUTE STROKE NIHSS RIGHT ARM N/A
VA-ACUTE STROKE NIHSS RIGHT ARM 4
VA-ACUTE STROKE NIHSS RIGHT ARM 3
VA-ACUTE STROKE NIHSS RIGHT ARM 2
VA-ACUTE STROKE NIHSS RIGHT ARM 1
VA-ACUTE STROKE NIHSS RIGHT ARM 0
VA-ACUTE STROKE NIHSS LEFT ARM N/A
VA-ACUTE STROKE NIHSS LEFT ARM 4
VA-ACUTE STROKE NIHSS LEFT ARM 3
VA-ACUTE STROKE NIHSS LEFT ARM 2
VA-ACUTE STROKE NIHSS LEFT ARM 1
VA-ACUTE STROKE NIHSS LEFT ARM 0
VA-ACUTE STROKE NIHSS PALSY
VA-ACUTE STROKE NIHSS PALSY 3
VA-ACUTE STROKE NIHSS PALSY 2
VA-ACUTE STROKE NIHSS PALSY 1
VA-ACUTE STROKE NIHSS PALSY 0
VA-ACUTE STROKE NIHSS VISUAL
VA-ACUTE STROKE NIHSS VISUAL 3
VA-ACUTE STROKE NIHSS VISUAL 2
VA-ACUTE STROKE NIHSS VISUAL 1
VA-ACUTE STROKE NIHSS VISUAL 0
VA-ACUTE STROKE NIHSS GAZE
VA-ACUTE STROKE NIHSS GAZE 2
VA-ACUTE STROKE NIHSS GAZE 1
VA-ACUTE STROKE NIHSS GAZE 0
VA-ACUTE STROKE NIHSS LOC COMMAND
VA-ACUTE STROKE NIHSS LOC CMD 2
VA-ACUTE STROKE NIHSS LOC CMD 1
VA-ACUTE STROKE NIHSS LOC CMD 0
VA-ACUTE STROKE NIHSS LOC QUESTIONS
VA-ACUTE STROKE NIHSS LOC QUEST 2
VA-ACUTE STROKE NIHSS LOC QUEST 1
VA-ACUTE STROKE NIHSS LOC QUEST 0
VA-ACUTE STROKE NIHSS LOC
VA-ACUTE STROKE NIHSS LOC 3
VA-ACUTE STROKE NIHSS LOC 0
VA-ACUTE STROKE NIHSS LOC 2
VA-ACUTE STROKE NIHSS LOC 1
VA-ACUTE STROKE ONSET 2-3.5 HRS
VA-ACUTE STROKE ONSET < 15 HRS
VA-ACUTE STROKE ONSET 15-23 HRS
VA-ACUTE STROKE ONSET < 2 HRS
VA-ACUTE STROKE INIT PROV EVAL
VA-ACUTE STROKE PRESENTING SYMPTOMS
VA-ACUTE STROKE SYMPTOM-NUMBNESS
VA-ACUTE STROKE SYMPTOM-CONFUSION
VA-ACUTE STROKE SYMPTOM-SEEING
VA-ACUTE STROKE SYMPTOM-WALKING
VA-ACUTE STROKE SYMPTOM-HEADACHE

VA-ACUTE STROKE SUPPORTING STROKE CENTER
VA-ACUTE STROKE PROV EVAL
VA-ACUTE STROKE PROV NOTIFIED
VA-ACUTE STROKE TEAM ACTIVATED
VA-ACUTE STROKE ENDOVASC TX-TICI2B FLOW
VA-ACUTE STROKE ENDOVASC TX-GROIN PUNC
VA-ACUTE STROKE ENDOVASC CAPABLE SITE
VA-ACUTE STROKE
VA-ACUTE STROKE NIH STROKE SCALE MD
VA-ACUTE STROKE TIA
VA-ACUTE STROKE ENDOVASCULAR
VA-ACUTE STROKE NO ENDO UNAVAILABLE
VA-ACUTE STROKE NO ENDO COMFORT CARE
VA-ACUTE STROKE NO ENDO VASCULAR IMAGE
VA-ACUTE STROKE NO ENDO BRAIN IMAGE
VA-ACUTE STROKE NO ENDO CLINICAL
VA-ACUTE STROKE ENDOVASCULAR ELIGIBLE
VA-ACUTE STROKE TIME OF ALTEPLASE
VA-ACUTE STROKE ALTEPLASE
VA-ACUTE STROKE NO ALTEPLASE >4.5 HOURS
VA-ACUTE STROKE NO ALTEPLASE NOT MET
VA-ACUTE STROKE NO ALTEPLASE REFUSAL
VA-ACUTE STROKE NO ALTEPLASE CRAN BLEED
VA-ACUTE STROKE NO ALTEPLASE NON-DISABLE
VA-ACUTE STROKE NO ALTEPLASE HYPERTENS
VA-ACUTE STROKE NO ALTEPLASE BLEEDING
VA-ACUTE STROKE ALTEPLASE ELIGIBLE
VA-ACUTE STROKE ACUTE ISCHEMIC STROKE
VA-ACUTE STROKE TIME IMAGING REVIEWED
VA-ACUTE STROKE TIME ON VIDEO
VA-ACUTE STROKE TIME MD CONTACTED

REMINDER SPONSOR

Office of Telehealth Services Store and Forward Telehealth
Office of Quality & Performance

REMINDER TERM

VA-REMINDER UPDATE_2_0_79
VA-ASRA ENDOVASCULAR THERAPY CANDIDATE (BL)
VA-ASRA ENDOVASCULAR THERAPY COMPLETED (BL)
VA-ASRA ALTEPLASE TREATMENT-NOT GIVEN (BL)
VA-ASRA ALTEPLASE TREATMENT GIVEN-60 MIN CHECK (BL)
VA-ASRA ALTEPLASE TREATMENT GIVEN-45 MIN CHECK (BL)
VA-ASRA ALTEPLASE TREATMENT GIVEN-30 MIN CHECK (BL)
VA-ASRA ALTEPLASE TREATMENT GIVEN-15 MIN CHECK (BL)
VA-ASRA ALTEPLASE TREATMENT-GIVEN (BL)
VA-ASRA SWALLOW SCREEN-FAILED (BL)
VA-ASRA SWALLOW SCREEN-PASSED (BL)
VA-ASRA INITIAL NIHSS (BL)

VA-ASRA PRESENTING SYMPTOMS (BL)
VA-ASRA LAST KNOWN WELL (BL)

REMINDER DIALOG

VA-ACUTE STROKE NURS RAPID ASSESSMENT/TREATMENT
VA-ACUTE STROKE PROVIDER 24 HOUR POST-ALTEPLASE FOLLOW-UP
VA-ACUTE STROKE PROVIDER TEMPLATE

HEALTH SUMMARY TYPE

PT/INR
CBC W/DIFF LAST 1,T-2Y
VITALS TODAY

HEALTH SUMMARY OBJECTS

PT/INR (TIU)
CBC W/DIFF LAST 1,T-2Y (TIU)
VITALS TODAY (TIU)

TIU DOCUMENT DEFINITION

PT/INR
CBC W/DIFF LAST 1,T-2Y
VITALS TODAY

Install Details

This update is being distributed as a web host file. The address for the host file is:
http://vista.med.va.gov/reminders/UPDATE_2_0_79.PRD

The file will be installed using Reminder Exchange, programmer access is not required.

Installation:

=====

This update can be loaded with users on the system. Installation will take less than 30 minutes.

Install Example

To Load the Web Host File. Navigate to Reminder exchange in Vista

```
+      + Next Screen  - Prev Screen  ?? More Actions  >>>
CFE  Create Exchange File Entry      LHF  Load Host File
CHF  Create Host File                 LMM  Load MailMan Message
CMM  Create MailMan Message           LR   List Reminder Definitions
DFE  Delete Exchange File Entry       LWH  Load Web Host File
IFE  Install Exchange File Entry       RI   Reminder Definition Inquiry
IH   Installation History              RP   Repack
Select Action: Next Screen// LWH  Load Web Host File
Input the URL for the .prd file: http://vista.med.va.gov/reminders/UPDATE_2_0_79.PRD
```

At the **Select Action:** prompt, enter **LWH** for Load Web Host File

At the **Input the url for the .prd file:** prompt, type the following web address:

http://vista.med.va.gov/reminders/UPDATE_2_0_79.PRD

You should see a message at the top of your screen that the file successfully loaded.

```
http://vista.med.va.gov/reminders/UPDATE_2_0_79.PRD successfully loaded.
```

Search and locate an entry titled **UPDATE_2_0_79 VA-ACUTE STROKE TEMPLATES** in reminder exchange

```
+Item  Entry                                     Source                                     Date Packed
180  UPDATE_2_0_79 VA-ACUTE STROKE TEMPLATES  GRIFFITH@SALT LAKE CI  08/01/2019@07:44
181  UPDATE_2_0_8 MH UPDATES                   MONTGOMERY@SALT LAKE CI  02/24/2017@12:44
182  UPDATE_2_0_80 VA-TH VVC                   GRIFFITH@SALT LAKE CI  05/15/2019@05:36
      REMINDERS
183  UPDATE_2_0_82 VA-ADVANCE CARE             PLOTT@SALT LAKE CI     06/18/2019@09:53
      PLANNING
184  UPDATE_2_0_84 VA-IRAQ POST                GRIFFITH@SALT LAKE CI  05/02/2019@09:50
      DEPLOYMENT UPDATE
185  UPDATE_2_0_85 VA-CSP CLIN                 GRIFFITH@SALT LAKE CI  06/18/2019@06:47
+      + Next Screen  - Prev Screen  ?? More Actions  >>>
CFE  Create Exchange File Entry      LHF  Load Host File
CHF  Create Host File                 LMM  Load MailMan Message
CMM  Create MailMan Message           LR   List Reminder Definitions
DFE  Delete Exchange File Entry       LWH  Load Web Host File
IFE  Install Exchange File Entry       RI   Reminder Definition Inquiry
IH   Installation History              RP   Repack
Select Action: Next Screen// IFE  Install Exchange File Entry
Enter a list or range of numbers (1-292): 180
```

At the **Select Action** prompt, enter **IFE** for Install Exchange File Entry

Enter the number that corresponds with your entry titled **UPDATE_2_0_79 VA-ACUTE STROKE TEMPLATES** (in this example it is entry 180, it will vary by site)


```

Component                                     Category      Exists
Source:      GRIFFITH,ELIZABETH A at SALT LAKE CITY
Date Packed: 08/01/2019@07:44:01
Package Version: 2.0P35

Description:
The following Clinical Reminder items were selected for packing:
REMINDER DIALOG
  VA-ACUTE STROKE PROVIDER TEMPLATE
  VA-ACUTE STROKE PROVIDER 24 HOUR POST-ALTEPLASE FOLLOW-UP
  VA-ACUTE STROKE NURS RAPID ASSESSMENT/TREATMENT

REMINDER TERM
  VA-REMINDER UPDATE_2_0_79
Non-exchangeable order dialog(s):
-----
Name: ORZ CONSULT
+ Enter ?? for more actions >>>
IA Install all Components          IS Install Selected Component
Select Action: Next Screen// IA

```

At the **Select Action** prompt, type **IA** for Install all Components and hit enter.
 Select Action: Next Screen// **IA Install all Components**

During the installation, you will see several prompts: *Note that you will **install** all new components*

You will be prompted to install the FIRST dialog component:

```

Packed reminder dialog: VA-ACUTE STROKE NURS RAPID ASSESSMENT/TREATMENT [NATIONA
Item  Seq. Dialog Findings                               Type      Exists
1      VA-ACUTE STROKE NURS RAPID ASSESSMENT/TREATMENT  dialog
2      1 VA-ACUTE STROKE NURS RAPID ASSESSMENT/TREATMENT  element
      VERSION
      Finding: *NONE*
3      5 VA-TXT ASRA INSTRUCTION                          element
      Finding: *NONE*
4      10 VA-GP ASRA PRESENTING SYMPTOMS*                  group
      Finding: *NONE*
5      10.5 VA-HF ASRA SYMPTOMS-SUDDEN CONFUSION          element
      Finding: VA-ACUTE STROKE SYMPTOM-CONFUSION (HEALTH FACTOR)  X
6      10.10 VA-HF ASRA SYMPTOMS-SUDDEN NUMBNESS          element
      Finding: VA-ACUTE STROKE SYMPTOM-NUMBNESS (HEALTH FACTOR)    X
+      + Next Screen  - Prev Screen  ?? More Actions
DD Dialog Details      DT Dialog Text          IS Install Selected
DF Dialog Findings    DU Dialog Usage        QU Quit
DS Dialog Summary     IA Install All
Select Action: Next Screen// IA

```

At the **Select Action** prompt, type **IA** to install the dialog – **VA-ACUTE STROKE NURS RAPID ASSESSMENT/TREATMENT**
 Select Action: Next Screen// **IA Install All**
 Install reminder dialog and all components with no further changes: **Y// ES**

When you are prompted for a consult order, please choose replace and replace with your local consult order for Speech/Swallowing.

ADDITIONAL FINDING entry Q.ORZ CONSULT does not exist.

Select one of the following:

- D Delete
- P Replace with an existing entry
- Q Quit the install

Enter response: **P Replace with an existing entry**

Select ORDER DIALOG NAME: XXXXXX CONSULT ----- local consult order for Speech/Swallowing Screen

Packed reminder dialog: VA-ACUTE STROKE NURS RAPID ASSESSMENT/TREATMENT [NATIONA
VA-ACUTE STROKE NURS RAPID ASSESSMENT/TREATMENT (reminder dialog) installed from

Item	Seq.	Dialog Findings	Type	Exists
1		VA-ACUTE STROKE NURS RAPID ASSESSMENT/TREATMENT	dialog	X
2	1	VA-ACUTE STROKE NURS RAPID ASSESSMENT/TREATMENT VERSION Finding: *NONE*	element	X
3	5	VA-TXT ASRA INSTRUCTION Finding: *NONE*	element	X
4	10	VA-GP ASRA PRESENTING SYMPTOMS* Finding: *NONE*	group	
5	10.5	VA-HF ASRA SYMPTOMS-SUDDEN CONFUSION Finding: VA-ACUTE STROKE SYMPTOM-CONFUSION (HEALTH FACTOR)	element	X
6	10.10	VA-HF ASRA SYMPTOMS-SUDDEN NUMBNESS Finding: VA-ACUTE STROKE SYMPTOM-NUMBNESS (HEALTH FACTOR)	element	X

+ + Next Screen - Prev Screen ?? More Actions

DD	Dialog Details	DT	Dialog Text	IS	Install Selected
DF	Dialog Findings	DU	Dialog Usage	QU	Quit
DS	Dialog Summary	IA	Install All		

Select Action: Next Screen// Q

When the dialog has completed installation, you will then be returned to this screen. At the **Select Action** prompt, type **Q**.

You will be prompted to install the SECOND dialog component:

Packed reminder dialog: VA-ACUTE STROKE PROVIDER 24 HOUR POST-ALTEPLASE FOLLOW-U

Item	Seq.	Dialog Findings	Type	Exists
1		VA-ACUTE STROKE PROVIDER 24 HOUR POST-ALTEPLASE FOLLOW-UP	dialog	
2	1	VA-ACUTE STROKE PROVIDER 24 HOUR POST-ALTEPLASE VERSION Finding: *NONE*	element	
3	4	VA-EL TELESTROKE POST ALETPLASE INFO Finding: *NONE*	element	
4	5	VA-EL TELESTROKE POST HISTORY Finding: *NONE*	element	
5	10	VA-EL TELESTROKE POST MEDICATIONS Finding: *NONE*	element	

+ + Next Screen - Prev Screen ?? More Actions

DD	Dialog Details	DT	Dialog Text	IS	Install Selected
DF	Dialog Findings	DU	Dialog Usage	QU	Quit
DS	Dialog Summary	IA	Install All		

Select Action: Next Screen// IA

At the **Select Action** prompt, type **IA** to install the dialog – **VA-ACUTE STROKE PROVIDER 24 HOUR POST-ALTEPLASE FOLLOW-UP**

Select Action: Next Screen// **IA Install All**

Install reminder dialog and all components with no further changes: **Y// ES**

```
Packed reminder dialog: VA-ACUTE STROKE PROVIDER 24 HOUR POST-ALTEPLASE FOLLOW-U
VA-ACUTE STROKE PROVIDER 24 HOUR POST-ALTEPLASE FOLLOW-UP (reminder dialog) inst
```

Item	Seq.	Dialog Findings	Type	Exists
1		VA-ACUTE STROKE PROVIDER 24 HOUR POST-ALTEPLASE FOLLOW-UP	dialog	X
2	1	VA-ACUTE STROKE PROVIDER 24 HOUR POST-ALTEPLASE VERSION Finding: *NONE*	element	X
3	4	VA-EL TELESTROKE POST ALETPLASE INFO Finding: *NONE*	element	X
4	5	VA-EL TELESTROKE POST HISTORY Finding: *NONE*	element	X
5	10	VA-EL TELESTROKE POST MEDICATIONS Finding: *NONE*	element	X
+ + Next Screen - Prev Screen ?? More Actions				
DD	Dialog Details	DT	Dialog Text	IS Install Selected
DF	Dialog Findings	DU	Dialog Usage	QU Quit
DS	Dialog Summary	IA	Install All	

Select Action: Next Screen// Q

When the dialog has completed installation, you will then be returned to this screen. At the **Select Action** prompt, type **Q**.

You will be prompted to install the FINAL dialog component:

```
Packed reminder dialog: VA-ACUTE STROKE PROVIDER TEMPLATE [NATIONAL DIALOG]
```

Item	Seq.	Dialog Findings	Type	Exists
1		VA-ACUTE STROKE PROVIDER TEMPLATE	dialog	
2	1	VA-ACUTE STROKE PROVIDER TEMPLATE VERSION Finding: *NONE*	element	
3	5	VA-GP TELESTROKE TEMPLATE INFO Finding: *NONE*	group	
4	5.5	VA-EL TELESTROKE TIME AND BASELINE Finding: *NONE*	group	
5	5.5.5	VA-EL TELESTROKE TIME MD CONTACTED Finding: VA-ACUTE STROKE TIME MD CONTACTED (HEALTH FACTOR)	element	X
6		PXRM COMMENT	prompt	X
7	5.5.10	VA-EL TELESTROKE TIME ON VIDEO Finding: VA-ACUTE STROKE TIME ON VIDEO (HEALTH FACTOR)	element	X
8		PXRM COMMENT	prompt	X
+ + Next Screen - Prev Screen ?? More Actions				
DD	Dialog Details	DT	Dialog Text	IS Install Selected
DF	Dialog Findings	DU	Dialog Usage	QU Quit
DS	Dialog Summary	IA	Install All	

Select Action: Next Screen// IA

At the **Select Action** prompt, type **IA** to install the dialog – **VA-ACUTE STROKE PROVIDER TEMPLATE**

Select Action: Next Screen// **IA Install All**

Install reminder dialog and all components with no further changes: **Y// ES**

```

Packed reminder dialog: VA-ACUTE STROKE PROVIDER TEMPLATE [NATIONAL DIALOG]
VA-ACUTE STROKE PROVIDER TEMPLATE (reminder dialog) installed from exchange file
Item  Seq. Dialog Findings                               Type  Exists
  1    VA-ACUTE STROKE PROVIDER TEMPLATE                 dialog  X
  2    1 VA-ACUTE STROKE PROVIDER TEMPLATE VERSION       element  X
      Finding: *NONE*
  3    5 VA-GP TELESTROKE TEMPLATE INFO                  group    X
      Finding: *NONE*
  4    5.5 VA-EL TELESTROKE TIME AND BASELINE            group    X
      Finding: *NONE*
  5    5.5.5 VA-EL TELESTROKE TIME MD CONTACTED          element  X
      Finding: VA-ACUTE STROKE TIME MD CONTACTED (HEALTH FACTOR)
  6    PXRМ COMMENT                                     prompt   X
  7    5.5.10 VA-EL TELESTROKE TIME ON VIDEO             element  X
      Finding: VA-ACUTE STROKE TIME ON VIDEO (HEALTH FACTOR)
  8    PXRМ COMMENT                                     prompt   X
+      + Next Screen  - Prev Screen  ?? More Actions
DD  Dialog Details      DT  Dialog Text      IS  Install Selected
DF  Dialog Findings    DU  Dialog Usage     QU  Quit
DS  Dialog Summary     IA  Install All
Select Action: Next Screen// Q

```

When the dialog has completed installation, you will then be returned to this screen. At the **Select Action** prompt, type **Q**.

You will then be prompted to install the remaining components, you will choose Install to Install the new components and Skip if the component exists.

```

Component                                     Category  Exists
Source:      GRIFFITH,ELIZABETH A at SALT LAKE CITY
Date Packed: 08/01/2019@07:44:01
Package Version: 2.0P35

Description:
The following Clinical Reminder items were selected for packing:
REMINDER DIALOG
  VA-ACUTE STROKE PROVIDER TEMPLATE
  VA-ACUTE STROKE PROVIDER 24 HOUR POST-ALTEPLASE FOLLOW-UP
  VA-ACUTE STROKE NURS RAPID ASSESSMENT/TREATMENT

REMINDER TERM
  VA-REMINDER UPDATE_2_0_79
Non-exchangeable order dialog(s):
-----
Name: ORZ CONSULT
+      + Next Screen  - Prev Screen  ?? More Actions  >>>
IA  Install all Components      IS  Install Selected Component
Select Action: Next Screen// Q  Q

```

You will be returned to this screen. Type Q to quit.

Install Completed

Post Installation

1. Make the Dialog templates available to be attached to a Personal or Shared template or to be able to attach the dialog to a progress note title.

From the Reminders Manager Menu:

Select Reminder Managers Menu Option: **CP CPRS Reminder Configuration**

- CA Add/Edit Reminder Categories
- CL CPRS Lookup Categories
- CS CPRS Cover Sheet Reminder List
- MH Mental Health Dialogs Active
- PN Progress Note Headers
- RA Reminder GUI Resolution Active
- TIU TIU Template Reminder Dialog Parameter**
- DL Default Outside Location
- PT Position Reminder Text at Cursor

Select CPRS Reminder Configuration Option: **TIU TIU Template Reminder Dialog Parameter**

Reminder Dialogs allowed as Templates may be set for the following:

- 1 User USR [choose from NEW PERSON]
- 3 Service SRV [choose from SERVICE/SECTION]
- 4 Division DIV [choose from INSTITUTION]
- 5 System SYS [NATREM.FO-SLC.MED.VA.GOV]

Enter selection: **5** *Choose the appropriate number for your site. Your site may do this by System or other levels. The example below uses SYSTEM level*

Setting Reminder Dialogs allowed as Templates for System:

Select Display Sequence: **?**

- 148 VA-VETERANS CHOICE NOTE
- 149 VA-TBI SCREENING
- 151 VACO TRANSPLANT REFERRAL (D)

*When you type a question mark above, you will see the list of #'s (with dialogs) that are already taken. Choose a number **NOT** on this list. For this example, looking above I see the number 150 is not present, so I will use 150.*

Select Display Sequence: **150**

Are you adding 150 as a new Display Sequence? Yes// **Y YES**

Display Sequence: 150// **<Enter>**

Clinical Reminder Dialog: **VA-ACUTE STROKE PROVIDER**

TEMPLATE<Enter>

OK? Yes// **<Enter>** (Yes)

Select Display Sequence: **151**

Are you adding 151 as a new Display Sequence? Yes// **Y YES**

Display Sequence: 151// **<Enter>**

Clinical Reminder Dialog: **VA-ACUTE STROKE PROVIDER 24 HOUR POST-ALTEPLASE FOLLOW-UP <Enter>**

OK? Yes// **<Enter>** (Yes)

Select Display Sequence: **152**

Are you adding 152 as a new Display Sequence? Yes// **Y YES**

Display Sequence: 152// **<Enter>**

Clinical Reminder Dialog **VA-ACUTE STROKE NURS RAPID**

ASSESSMENT/TREATMENT <Enter>

OK? Yes// **<Enter>** (Yes)

2. **Setup of Note titles (If your site utilizes the Tele Stroke Program for ALL stroke evaluations, skip to step 2a.)**

Three note titles will need to be created to use with these three reminder dialog template.

The new note titles that needs to be created are:

Nursing Stroke Rapid Assessment/Treatment Note

This note title is to be mapped to the following VHA Enterprise Standard Title:
Nursing Note

Acute Stroke Provider Note

This note title is to be mapped to the following VHA Enterprise Standard Title:
Neurology Note

Acute Stroke Provider 24 Hour Post Alteplase Note

This note title is to be mapped to the following VHA Enterprise Standard Title:
Neurology Note

Comprehensive information on Creating Document Definitions can be found beginning on page 47 of the [TIU/ASU Implementation Guide](#)

3. **Associate the reminder dialogs with the note title in CPRS.**

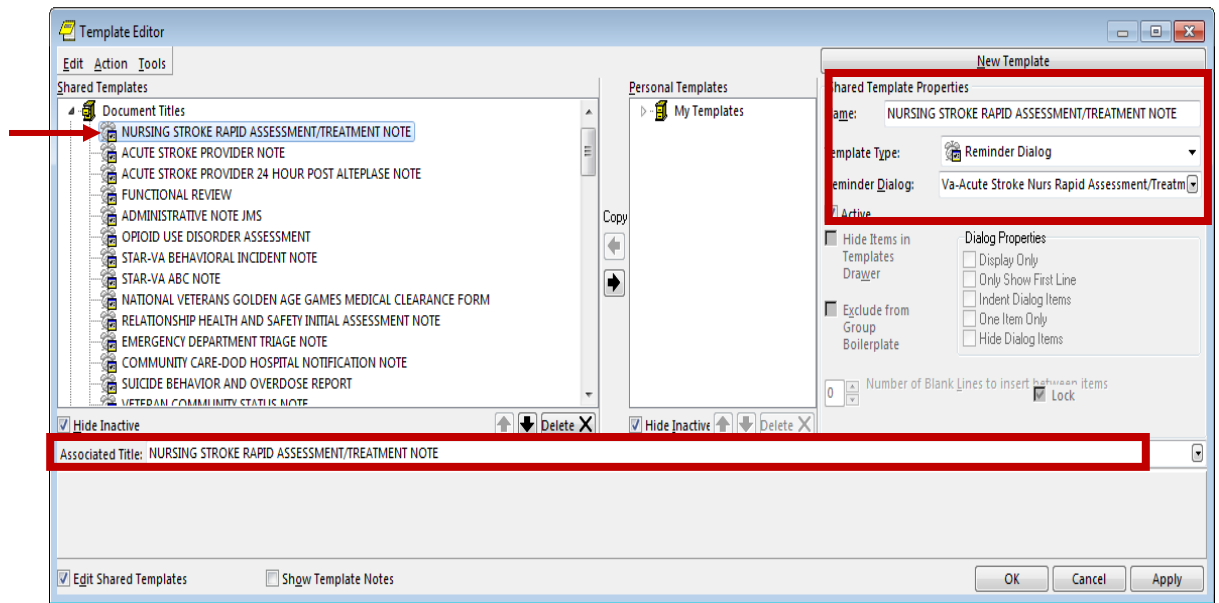
To do this, go to Template Editor, then Document Titles, select the appropriate folder (if applicable), and choose New Template (top right-hand corner).

Type in the following information:

Name: **Nursing Stroke Rapid Assessment/Treatment Note**

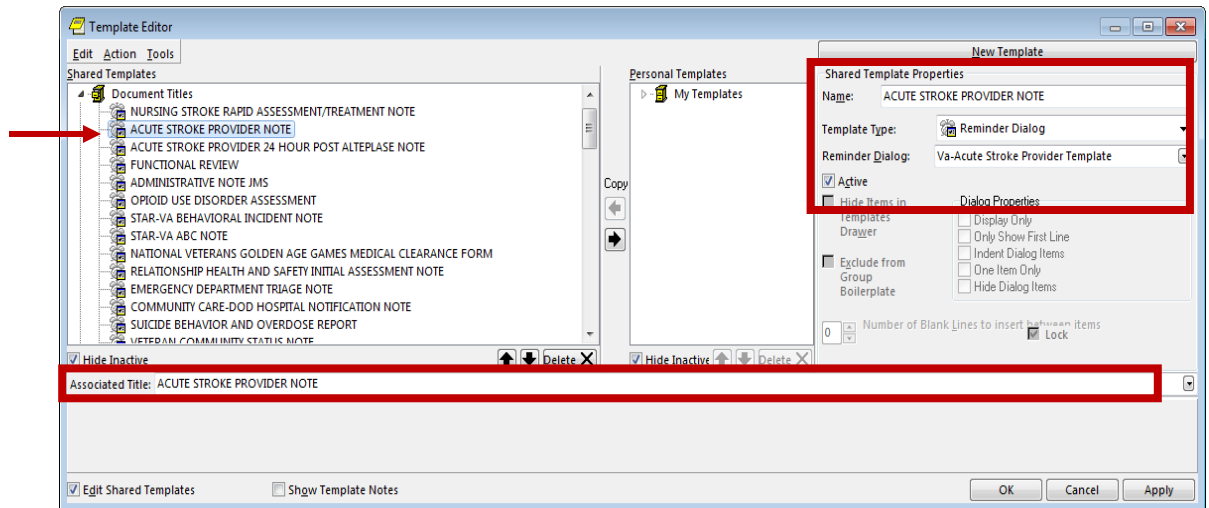
Template Type: Reminder Dialog

Reminder Dialog: **VA-ACUTE STROKE NURS RAPID
ASSESSMENT/TREATMENT**



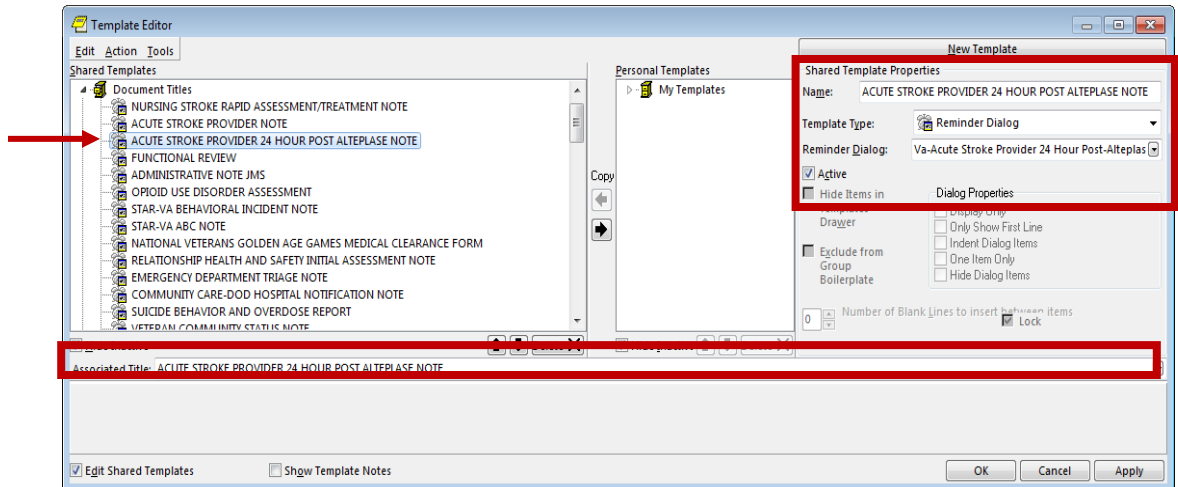
Next, type in the Associated Title, which in this case is **NURSING STROKE RAPID ASSESSMENT/TREATMENT NOTE** and hit Apply.

Name: **Acute Stroke Provider Note**
Template Type: Reminder Dialog
Reminder Dialog: **VA-ACUTE STROKE PROVIDER TEMPLATE**



Next, type in the Associated Title, which in this case is **ACUTE STROKE PROVIDER NOTE** and hit Apply.

Name: **Acute Stroke Provider 24 Hour Post Alteplase Note**
Template Type: Reminder Dialog
Reminder Dialog: **VA-ACUTE STROKE PROVIDER 24 HOUR POST-ALTEPLASE FOLLOW-UP**



Next, type in the Associated Title, which in this case is **ACUTE STROKE PROVIDER 24 HOUR POST ALTEPLASE NOTE** and hit Apply.

2a. Setup of Note titles (If your site does not utilize the Tele Stroke Program for stroke evaluation skip to step 4)

Three note titles will need to be created to use with these three reminder dialog template.

The new note titles that needs to be created are:

Nursing Stroke Rapid Assessment/Treatment Note

This note title is to be mapped to the following VHA Enterprise Standard Title:
Nursing Note

****Note: Some sites use both local resources and the Tele Stroke Program for stroke evaluation. If this note has been set up in the previous steps, it does not need to be set up again.****

TeleStroke Provider Acute Stroke Note

This note title is to be mapped to the following VHA Enterprise Standard Title:
Neurology Note

TeleStroke Provider 24 Hour Post Alteplase Follow-Up Note

This note title is to be mapped to the following VHA Enterprise Standard Title:
Neurology Note

Comprehensive information on Creating Document Definitions can be found beginning on page 47 of the [TIU/ASU Implementation Guide](#)

3a. Associate the reminder dialogs with the note title in CPRS.

To do this, go to Template Editor, then Document Titles, select the appropriate folder (if applicable), and choose New Template (top right-hand corner).

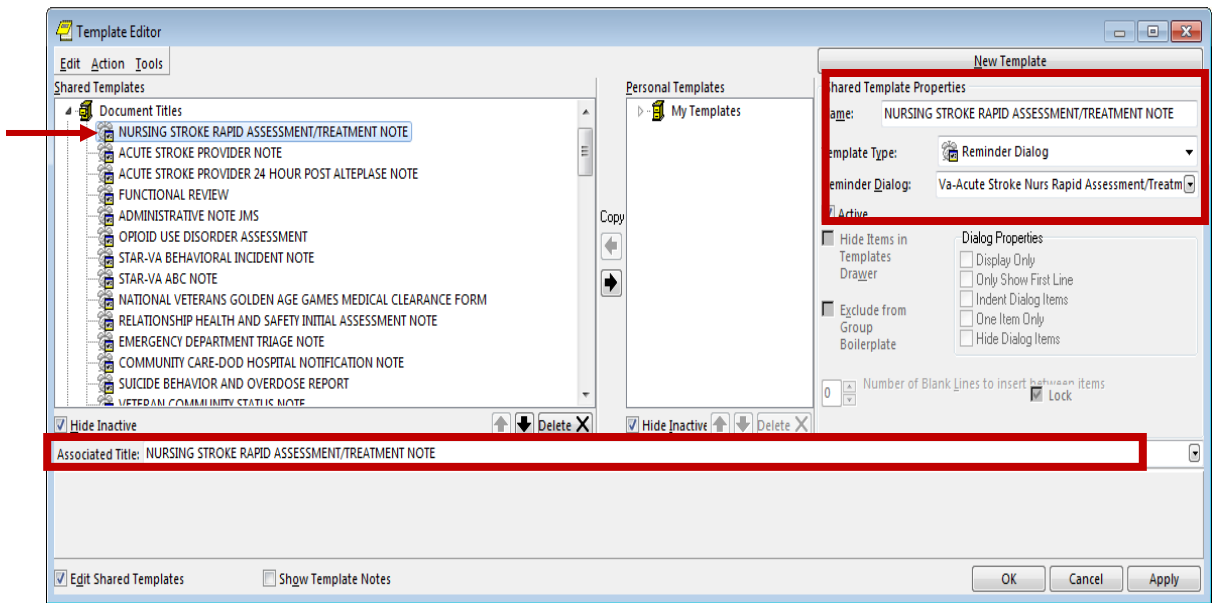
Type in the following information:

Name: **Nursing Stroke Rapid Assessment/Treatment Note**

Template Type: Reminder Dialog

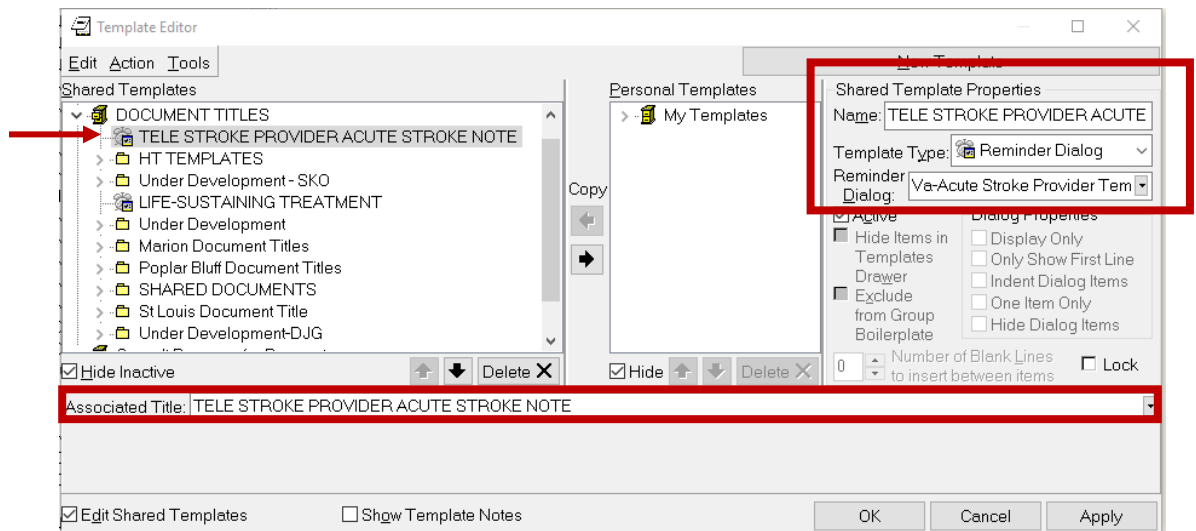
Reminder Dialog: **VA-ACUTE STROKE NURS RAPID ASSESSMENT/TREATMENT**

****Note: Some sites use both local resources and the Tele Stroke Program for stroke evaluation. If this note has been set up in the previous steps, it does not need to be set up again.****



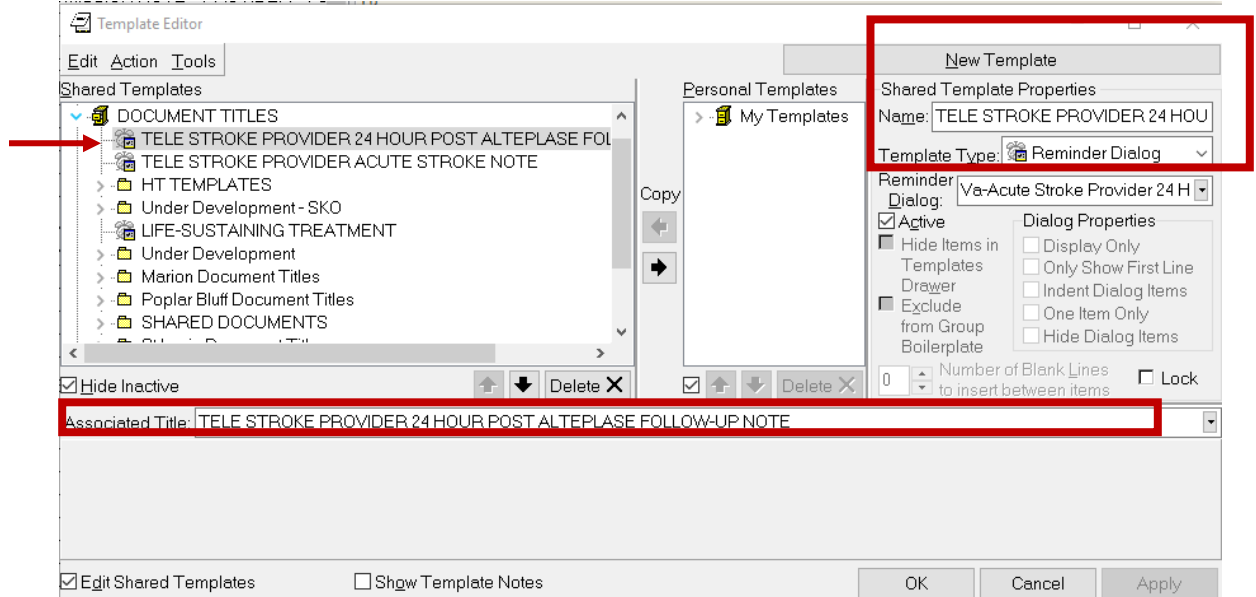
Next, type in the Associated Title, which in this case is **NURSING STROKE RAPID ASSESSMENT/TREATMENT NOTE** and hit Apply.

Name: **Tele Stroke Provider Acute Stroke Note**
 Template Type: **Reminder Dialog**
 Reminder Dialog: **VA-ACUTE STROKE PROVIDER TEMPLATE**



Next, type in the Associated Title, which in this case is **TELESTROKE PROVIDER ACUTE STROKE NOTE** and hit Apply.

Name: **Tele Stroke Provider 24 Hour Post Alteplase Follow-Up Note**
 Template Type: Reminder Dialog
 Reminder Dialog: **VA-ACUTE STROKE PROVIDER 24 HOUR POST-ALTEPLASE FOLLOW-UP**



Next, type in the Associated Title, which in this case is **TELESTROKE PROVIDER 24 HOUR POST ALTEPLASE FOLLOW-UP NOTE** and hit Apply.

4. If you were not prompted during the install to replace with your local consult order, add your local quick orders as finding items to the following elements:
 - a. Using the Vista menu, reminder dialog manager, reminder dialogs, change view to Element view and search for the following elements:
 - VAL -TXT ASRA SWALLOW SCREEN-NOT DONE
 - VAL -HF ASRA SWALLOW SCREEN-FAILED
 - b. Replace finding item ORZ CONSULTS with your local consult order for Speech/Swallowing Screen

5. Insert your local data objects.
 - a. Using the Vista menu, reminder dialog manager, reminder dialogs, change view to Element view and search for element: VAL-EL TELESTROKE LABS. Edit the dialog text and replace the text with your local TIU Data Objects for most recent CHEM 7, CBC, PTT, and INR.
 - b. Using the Vista menu, reminder dialog manager, reminder dialogs, change view to Element view and search for element: VAL-EL TELESTROKE POST MEDICATIONS. Edit the dialog text and replace the text with your local TIU Data Object for current active inpatient medications.
 - c. Using the Vista menu, reminder dialog manager, reminder dialogs, change view to Element view and search for element: VAL-EL TELESTROKE POST LABS.

Edit the dialog text and replace the text with your local TIU Data Objects for most recent CHEM 7, CBC, PTT, and INR.

NOTE: If you require further technical assistance, if there are any questions or problems during the installation, please notify your local IT support to log a national help desk ticket or contact the VA Service Desk and have them submit a national ticket to:

Category: Enterprise Applications

Enterprise Application: VistA - Clinical Reminders

Assignment Group: NTL SUP Clin 2