



National Oncology Program Office  
VA-Oncology Lung Cancer Reminder Dialog  
VA-Oncology Prostate Cancer Reminder Dialog  
VA-Symptom Assessment Scale (VSAS) Reminder Dialog

**PXRM\*2.0\*38**

## **INSTALLATION and SETUP GUIDE**

Product Development  
Department of Veterans Affairs

**December 2014**  
**Updated May 2015**

Product Development  
Department of Veterans Affairs

## Table of Contents

Introduction .....	4
Pre-Installation .....	4
Required Software for PXR*2*38 .....	4
Related Documentation .....	5
Web Sites .....	5
Installation .....	5
1. Retrieve the host file from one of the following locations (with the ASCII file type): .....	5
2. Install the patch first in a training or test account. ....	5
3. Load the distribution.....	5
4. Backup a Transport Global .....	6
a. Compare Transport Global to Current System .....	6
5. Install the build.....	6
6. Install File Print.....	6
7. Build File Print.....	7
8. Post-installation routines.....	7
VA-Oncology Lung Cancer Reminder Dialog .....	7
Component Inventory .....	7
1. Reminder Dialog Name .....	7
2. Branching Terms.....	7
3. Health Factors.....	8
4. Patient Data Objects .....	8
Post-Installation Set-up .....	8
5. Enable the dialog.....	8
6. Remove disabled from Reminder Dialog .....	9
7. Creating a shared folder .....	10
8. Creating a shared templates .....	11
9. Creating a local progress note title.....	12
10. Linking progress note to reminder dialog .....	14
VA-Oncology Prostate Cancer Reminder Dialog.....	14
Component Inventory .....	14
1. Reminder Dialog Name .....	15
2. Branching Term.....	15
3. Health Factors.....	15
4. Patient Data Objects .....	15
Post-Installation Set-up .....	16
5. Configuring two new Health Summary types/TIU objects/health summary objects....	16
6. Enabling the dialog .....	19
7. Remove disable from reminder dialog .....	20
8. Creating a shared folder .....	20
9. Creating a shared template .....	21
10. Creating a local progress note title.....	22
11. Linking progress note to reminder dialog .....	24
Component Inventory .....	25
1. Reminder Dialog Name .....	26
2. Health Factors.....	26

3. GMRV Vital Type.....	26
4. TIU Template Field .....	26
<b>Post-Installation Set-up .....</b>	<b>26</b>
5. Enabling the dialog .....	26
6. Remove disabled from reminder dialog.....	28
7. Creating a shared folder .....	29
8. Creating shared templates .....	29
9. Creating a local progress note title.....	30
10. Linking progress note to reminder dialog .....	32
<b>Appendix A: Installation Example .....</b>	<b>32</b>
<b>Appendix B: Lung Cancer Health Factors.....</b>	<b>35</b>
<b>Appendix C: Prostate Cancer Health Factors .....</b>	<b>40</b>
<b>Appendix D: VSAS Health Factors .....</b>	<b>46</b>
<b>Acronyms .....</b>	<b>50</b>

# Introduction

---

NOTE: Patch PXRМ\*2.0\*38 released the documentation associated with the patch. However, after release, an error was found in the install guide where sites were instructed to map Reminder Dialog templates to a national standard title, HEMATOLOGY AND ONCOLOGY PROGRESS NOTE that was INACTIVE. This has been corrected in this version of the Install Guide to have sites map Reminder Dialog templates to national standard title HEMATOLOGY AND ONCOLOGY NOTE. This new document, PXRМ\_2\_0\_38\_IG.PDF, is being released as part of an informational patch PXRМ\*2.0\*59.

This patch releases three oncology reminder dialogs without any changes to routines, data dictionaries, or other package functions – “content” only. The reminder dialogs are: VA-ONCOLOGY LUNG CANCER REMINDER DIALOG, VA-ONCOLOGY PROSTATE CANCER REMINDER DIALOG, VA-SYMPTOM ASSESSMENT SCALE (VSAS) REMINDER DIALOG.

The National Oncology Program Office seeks to provide tools to VA facilities to enable providers to format essential clinical data so that it is readily available for clinical care and to measure the quality of care in the VA in a prospective, timely, and cost-efficient manner. Using Reminder Dialogs in CPRS is one mechanism to support these goals. Reminder dialogs will include information necessary for quality assessment as defined by the National Quality Forum, ASCO's Quality Oncology Practice Initiative, and other reliable and up-to-date sources. Reminder dialogs will enable the standardization of clinical information necessary for quality indicators into a discrete format and obtain key elements to continuously monitor the quality of cancer care.

These reminder dialogs were developed and are supported by the National Oncology Program Office in Specialty Care Services (part of Patient Care Services). Please contact Susan Hamilton-Hill for any questions/concerns at [susan.hamilton-hill@va.gov](mailto:susan.hamilton-hill@va.gov) .

**\*\*Please note there are 3 separate dialogs contained in this patch. Be sure you are in the correct dialog when using these instructions.**

## Pre-Installation

---

### *Required Software for PXRМ\*2\*38*

Package/Patch	Namespace	Version	Comments
Clinical Reminders	PXRМ	2.0	Fully patched
Health Summary	GMTS	2.7	Fully patched
Kernel	XU	8.0	Fully patched
NATIONAL DRUG FILE	PSN	4.0	Fully patched
Pharmacy Data Management	PSS	1.0	Fully patched

Outpatient Pharmacy	PSO	7.0	Fully patched
VA FileMan	DI	22	Fully patched

## Related Documentation

Documentation	Documentation File name
Installation and Setup Guide	PXRM_2_0_38_IG.PDF
User Guide	PXRM*2.0*38 user guide

## Web Sites

Site	URL	Description
National Clinical Reminders site	<a href="http://vista.med.va.gov/reminders">http://vista.med.va.gov/reminders</a>	Contains manuals, PowerPoint presentations, and other information about Clinical Reminders
National Clinical Reminders Committee	<a href="http://vaww.portal.va.gov/sites/ncrc/public/default.aspx">http://vaww.portal.va.gov/sites/ncrc/public/default.aspx</a>	This committee directs the development of new and revised national reminders
VistA Document Library	<a href="http://www.va.gov/vdl/">http://www.va.gov/vdl/</a>	Contains manuals for Clinical Reminders and

# Installation

This patch can be installed with users on the system, but it should be done during non-peak hours. Estimated Installation Time: 10-15 minutes.

The installation needs to be done by a person with DUZ(0) set to "@."

We recommend that a Clinical Applications Coordinator be present during the install so that if questions occur during the install of Reminder Exchange entries, a knowledgeable person can respond to them.

- 1. Retrieve the host file from one of the following locations (with the ASCII file type):**

Albany	ftp.fo-albany.med.va.gov	<ftp://ftp.fo-albany.med.va.gov>
Hines	ftp.fo-hines.med.va.gov	<ftp://ftp.fo-hines.med.va.gov>
Salt Lake City	ftp.fo-slc.med.va.gov	<ftp://ftp.fo-slc.med.va.gov>

- 2. Install the patch first in a training or test account.**

Installing in a non-production environment will give you time to get familiar with new functionality and complete the setup for reminders and dialogs prior to installing the software in production.

- 3. Load the distribution.**

In programmer mode type, D ^XUP, select the Kernel Installation & Distribution System menu (XPD MAIN), then the Installation option, and then the option LOAD a Distribution. Enter your directory name.KID at the Host File prompt.

## Example

```
Select Installation <TEST ACCOUNT> Option: 1  Load a Distribution
Enter a Host File:

KIDS Distribution saved on NOV 24, 2014@10:07:41
Comment: LUNG ONCOLOGY TEMPLATES

This Distribution contains Transport Globals for the following Package(s):
  PXR*2.0*38
Distribution OK!

Want to Continue with Load? YES//
Loading Distribution...

  PXR*2.0*38
Use INSTALL NAME: PXR*2.0*38 to install this Distribution.
```

From the Installation menu, you may elect to use the following options:

#### 4. Backup a Transport Global

This option will create a backup message of any routines exported with the patch. It will NOT back up any other changes such as DDs or templates.

#### a. Compare Transport Global to Current System

This option will allow you to view all changes that will be made when the patch is installed. It compares all components of the patch (routines, DDs, templates, etc.).

#### 5. Install the build.

From the Installation menu on the Kernel Installation and Distribution System (KIDS) menu, run the option Install Package(s). Select the build PXR\*2.0\*38 and proceed with the install. If you have problems with the installation, log a Remedy ticket and/or call the National Help Desk to report the problem.

```
Select Installation & Distribution System Option: Installation
Select Installation Option: INSTALL PACKAGE(S)
Select INSTALL NAME: PXR*2.0*38
```

Answer "NO" to the following prompt:

Want KIDS to INHIBIT LOGONs during install? NO// **NO**

**NOTE: DO NOT QUEUE THE INSTALLATION** because this installation asks questions requiring responses and queuing will stop the installation. A Reminders Manager or CAC should be present to respond to these.

### Installation Example

[See Appendix A](#)

#### 6. Install File Print

Use the KIDS Install File Print option to print out the results of the installation process.

You can select the multi-package build or any of the individual builds included in

the multi-package build.

```
Select Utilities Option: Install File Print
Select INSTALL NAME: PXRMP*2.0*38
```

## 7. Build File Print

Use the KIDS Build File Print option to print out the build components.

```
Select Utilities Option: Build File Print
Select BUILD NAME: PXRMP*2.0*38
DEVICE: HOME//
```

## 8. Post-installation routines

After successful installation, the following init routines may be deleted:

```
PXRMP38E
PXRMP38I
```

# VA-Oncology Lung Cancer Reminder Dialog

---

## Component Inventory

The VA-Oncology Lung Cancer Reminder Dialog contains:

- 1 dialog
- 14 branching terms
- 16 patient data objects
- 3 health factor categories
- 217 health factors

### 1. Reminder Dialog Name

VA-ONCOLOGY LUNG CANCER

### 2. Branching Terms

The following 14 branching reminder terms are exported with the VA-ONCOLOGY LUNG CANCER reminder. These terms already have mapped findings that are entered through the dialog. No additional mapping is required.

```
VA-ONC LUNG CHEMO RT
VA-ONC LUNG CLINICAL STAGE RT
VA-ONC LUNG DATE OF DIAGNOSIS RT
VA-ONC LUNG FIRST ABNORMAL RADIOLOGY RT
VA-ONC LUNG FOLLOW UP RT
VA-ONC LUNG HEADER BRANCH RT
VA-ONC LUNG HISTOLOGY RT
VA-ONC LUNG MEDIASTINOSCOPY RT
```

VA-ONC LUNG MOLECULAR TESTING RT  
VA-ONC LUNG PERFORMANCE STATUS RT  
VA-ONC LUNG RADIATION THERAPY RT  
VA-ONC LUNG REFERRAL RT  
VA-ONC LUNG SURGERY PERFORMED RT  
VA-ONC LUNG TUMOR BOARD RT

### 3. Health Factors

See [Appendix B: Lung Cancer Health Factors](#) for complete list

### 4. Patient Data Objects

Sixteen new health summary types/objects will install with this build. The health summary components are selected health factors (SHF). These objects pull ‘read only’ information from previously used health factors. No mapping is required.

VA-ONC LUNG ABNORMAL RADIOLOGY  
VA-ONC LUNG CHEMOTHERAPY  
VA-ONC LUNG DIAGNOSIS DATE  
VA-ONC LUNG ECOG PS  
VA-ONC LUNG FOLLOW UP  
VA-ONC LUNG HEADER  
VA-ONC LUNG HEADER 2  
VA-ONC LUNG HEADER 3  
VA-ONC LUNG HISTOLOGY  
VA-ONC LUNG HOSPICE REFERRAL  
VA-ONC LUNG MEDIASTINOSCOPY  
VA-ONC LUNG MOLECULAR TESTS  
VA-ONC LUNG RADIATION THERAPY  
VA-ONC LUNG STAGING  
VA-ONC LUNG SURGERY PERFORMED  
VA-ONC LUNG TUMOR BOARD

## Post-Installation Set-up

There are several steps to complete after the patch is installed before the dialog should be deployed. Detailed instructions for each step are below.

### 5. Enable the dialog

Before using the dialog in shared templates or linking to a note title you must first add into the TIU Template Reminder Dialog Parameter list.

Adding dialog to the TIU Reminder Dialog Parameter (starting from the Reminder Manager Menu)

Select Reminder Managers Menu <TEST ACCOUNT> Option: **CP** CPRS Reminder Configuration



- CA Add/Edit Reminder Categories
- CL CPRS Lookup Categories
- CS CPRS Cover Sheet Reminder List
- MH Mental Health Dialogs Active
- PN Progress Note Headers
- RA Reminder GUI Resolution Active
- TIU TIU Template Reminder Dialog Parameter
- DL Default Outside Location
- PT Position Reminder Text at Cursor
- NP New Reminder Parameters
- GEC GEC Status Check Active
- WH WH Print Now Active

Select CPRS Reminder Configuration <TEST ACCOUNT> Option: **TIU** TIU Template  
Reminder Dialog Parameter

Reminder Dialogs allows as Templates may be set for the following:

- 1 User USR [choose from NEW PERSON]
- 3 Service SRV [choose from SERVICE/SECTION]
- 4 Division DIV [NAME OF YOUR DIVISION]
- 5 System SYS [YOURSERVER.YOURSITE.MED.VA.GOV]

Enter selection: **5** System [YOURSERVER.YOURSITE.MED.VA.GOV]

Setting Reminder Dialogs allows as Templates for System:  
YOURSERVER.YOURSITE.MED.VA.GOV

Select Display Sequence: **?** **← enter ? to determine last sequence number**

Display Sequence Value

- 
- 1 DAY COMBINED TOBACCO USER
- 2 PATIENT EDUCATION ASSESSMENT
- 3 IMMUNIZATION CLINIC DIALOG
- 4 RD 580 NEU 562 DYSPHAGIA SCREENING TOOL

This list is  
condensed for  
space reasons.

....  
412 NON VA CARE COORDINATION NOTE (D) **← last sequence number on my list yours  
will be different**

Select Display Sequence: **413**  
Are you adding 413 as a new Display Sequence? Yes// YES  
Display Sequence: 413// 413  
Clinical Reminder Dialog: **VA-ONCOLOGY LUNG** reminder dialog NATIONAL  
...OK? Yes// (Yes)

## 6. Remove disabled from Reminder Dialog

Open reminder dialog manager, change view to 'DIALOG' locate VA-ONCOLOGY LUNG dialog on the list.

- a. Edit the VA-ONCOLOGY LUNG entry and remove the DISABLE field.
- b. Remember VA-ONCOLOGY LUNG will not have an associated source reminder.

Select Item: Next Screen// **ED** Edit/Delete Dialog  
 NAME: **VA-ONCOLOGY LUNG (Disabled)** Replace  
 DISABLE: DISABLED IN EXCHANGE Replace **@**  
 SURE YOU WANT TO DELETE? **Y** (Yes)  
 CLASS: NATIONAL//  
 SPONSOR: VHA ONCOLOGY//  
 REVIEW DATE: MAY 2013//  
 SOURCE REMINDER: //

The National Oncology Program Office recommends that the VA-ONCOLOGY Lung Cancer reminder dialog be used as a template and not a standalone note, but this is a local decision. Collaborate with Hematology/Oncology staff to determine how dialog will be used. The National Oncology Program Office will be releasing additional reminder dialogs so it is important to establish an appropriate location. Please follow any local naming convention guidelines in place at your facility.

=====

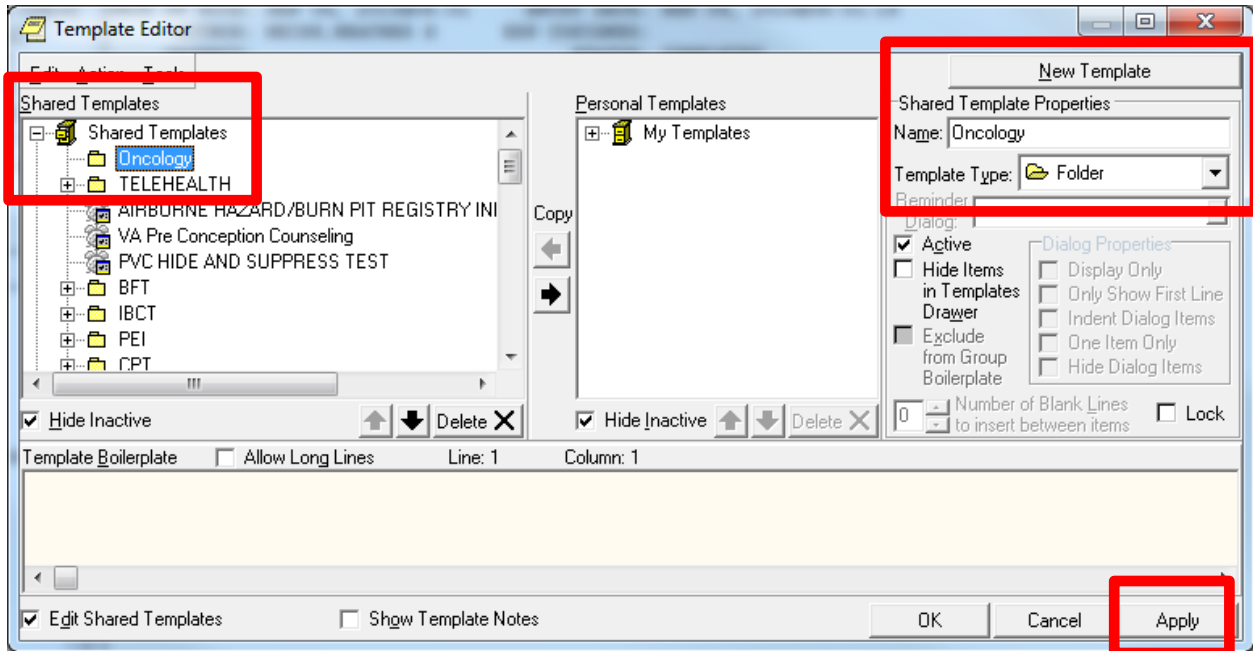
**While using the TIU editors if at any time the setting do not look correct NEVER click the apply button, but instead click CANCEL, then start over**

=====

**7. Creating a shared folder**

- Open template editor
- Click + sign Shared Templates
- Click on New Template button
- Type Oncology (your site may have local naming convention guidelines that should be followed)
- Select folder in Template Type box
- Click Apply lower right corner

**EX: Creating Shared Folder**



## 8. Creating a shared templates

Open template editor

Click + Shared templates

Locate Oncology folder and click on it

Click New Template button

Type VA-ONCOLOGY (your site may have local naming convention that should be followed)

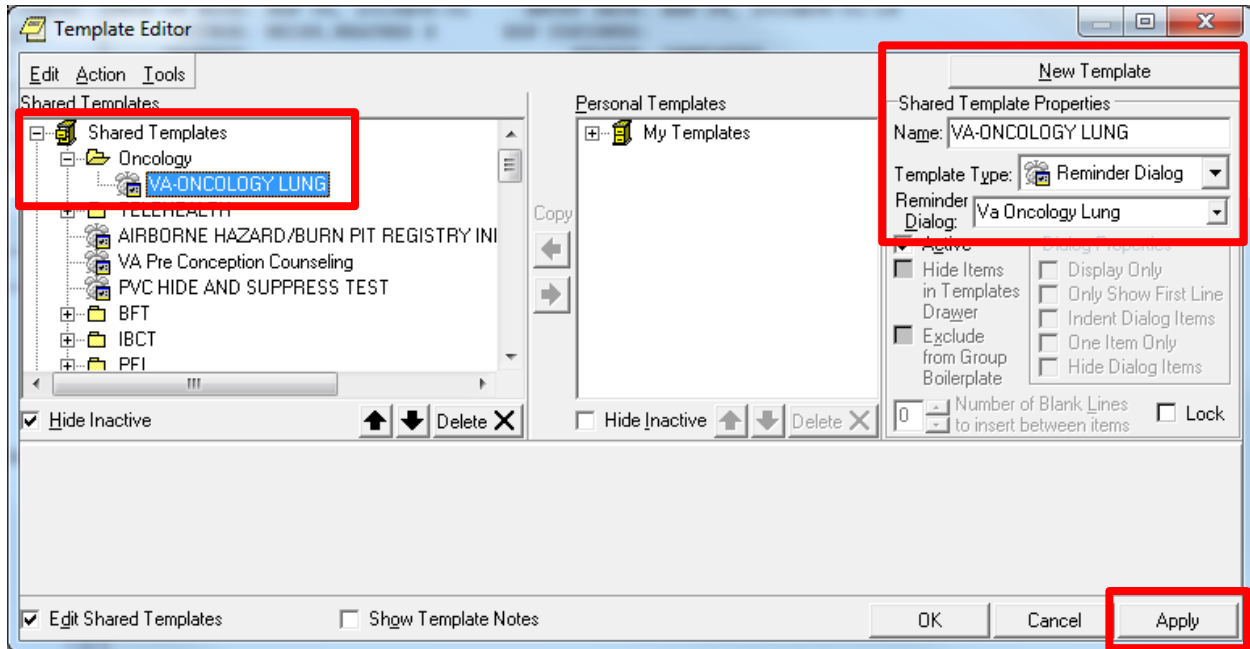
Select Reminder Dialog in template Type box

Type VA-ONCOLOGY in Reminder Dialog box

Click Apply lower right corner



**EX: Creating Shared Template**



## 9. Creating a local progress note title

Creating Progress Note Title

From the Document Definitions (Manager) Menu: create document definitions

Type Next Level at prompt

Enter corresponding number for Progress Notes at prompt

Hit enter until you find Medicine

Type Next Level and enter corresponding number for Medicine at prompt

Type Title at prompt

Type VA-Oncology Lung Template at prompt

Map title to HEMATOLOGY AND ONCOLOGY NOTE

Enter A at status prompt

Select Document Definitions (Manager) Option: 3 Create Document Definitions....

	Name	Type
1	CLINICAL DOCUMENTS	CL
2	PROGRESS NOTES	CL
3	ADDENDUM	DC
4	DISCHARGE SUMMARY	CL
5	CLINICAL PROCEDURES	CL
6	LR LABORATORY REPORTS	CL
7	SURGICAL REPORTS	CL

+ ?Help >ScrollRight PS/PL PrintScrn/List +/- >>>			
Class/DocumentClass	Next Level	Detailed Display/Edit	
(Title)	Restart	Status...	
(Component)	Boilerplate Text	Delete	

Select Action: Next Level// next Next Level  
 Select CLINICAL DOCUMENTS Item (Line 2-7): 2

Name	Type
2 PROGRESS NOTES	CL
3 MEDICINE	DC
4 MEDICAL OBSERVATION NOTE	TL
5 CANCER CARE	TL
6 CARDIAC CATH LAB PROCEDURE REPORT (T)	TL
7 CARDIAC ELECTROPHYSIOLOGY PROCEDURE REPORT (T)	TL
8 CARDIOLOGY ACS TEAM FOLLOW-UP NOTE	TL
9 CARDIOLOGY AICD IMPLANTATION REPORT	TL
+ ?Help >ScrollRight PS/PL PrintScrn/List +/- >>>	
(Class/DocumentClass)	Next Level Detailed Display/Edit
Title	Restart Status...
(Component)	Boilerplate Text Delete

Select Action: Next Screen// title Title  
 Enter the Name of a new MEDICAL SERVICE: VA-ONCOLOGY LUNG CANCER TEMPLATE  
 CLASS OWNER: CLINICAL COORDINATOR// CLINICAL COORDINATOR

EVERY Local Title must be mapped to a VHA Enterprise Standard Title.

Direct Mapping to Enterprise Standard Title...  
 Your LOCAL Title is: VA-ONCOLOGY LUNG TEMPLATE

NOTE: Only ACTIVE Titles may be selected...

Select VHA ENTERPRISE STANDARD TITLE: HEMATOLOGY AND ONCOLOGY NOTE  
 I found a match of: HEMATOLOGY AND ONCOLOGY NOTE  
 ... OK? Yes// YES

Ready to map LOCAL Title: VA-ONCOLOGY LUNG TEMPLATE to  
 VHA Enterprise Standard Title: HEMATOLOGY AND ONCOLOGY NOTE.  
 ... OK? Yes//YES

STATUS: (A/I/T): INACTIVE// A ACTIVE Entry Activated.

## 10. Linking progress note to reminder dialog

From Template Editor

Edit Shared Template

Click + Document Titles

Click New Template button

Type VA-Oncology Lung in Name box

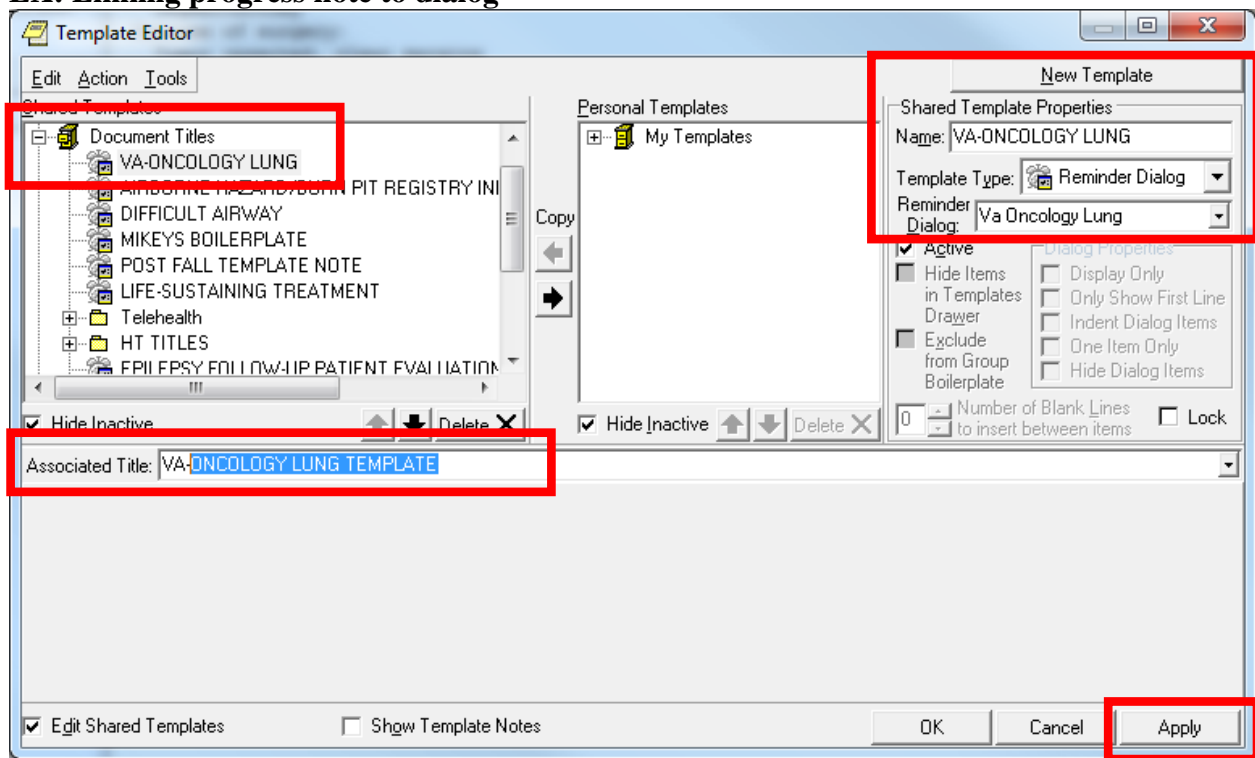
Click down arrow and Click on Reminder Dialog in Template Type Box

Type VA-ONCOLOGY in Reminder Dialog box

Type VA-Oncology Lung Template in Associated Title Box

Click Apply in lower right corner

### EX: Linking progress note to dialog



## VA-Oncology Prostate Cancer Reminder Dialog

### Component Inventory

The VA-Oncology Prostate Cancer Reminder Dialog contains:

- 1 dialog
- 1 branching terms
- 6 patient data objects
- 3 health factor categories
- 294 health factors

### 1. Reminder Dialog Name

VA-ONCOLOGY PROSTATE CANCER

### 2. Branching Term

The following branching reminder term is exported with the reminder. This term contains mapped findings that are entered through the dialog. No additional mapping is required.

VA-ONCOLOGY PROSTATE HEADER RT

### 3. Health Factors

See [Appendix C: Prostate Cancer Health Factors](#) for complete list

### 4. Patient Data Objects

Six new health summary types/objects/TIU document definitions will install with this build. **Two of these health summary types will require mapping to local terms.**

Instructions are included. No mapping is required for the other four objects.

VA-ONC PCA POST TREATMENT

VA-ONC PCA TREATMENTS

VA-ONC PCA DIAGNOSIS

VA-ONC PCA SURG PATH REPORT

VA-ONC PCA TESTOSTERONE (mapping required)

VA-ONC PCA LAST PSA (mapping required)

**NOTICE:** The GMTSMGR security key is necessary for the staff responsible for mapping the health summary types.

Element/Group containing HSO	TIU Object Name	HS Object Name	HS Type Name	HS Component Type
VA-EL ONC PCA PROSTATE HSO	VA-ONC PCA POST TREATMENT	VA-ONC PCA POST TREATMENT	VA-ONC PCA POST TREATMENT	SHF (Selected Health Factor)
VA-EL ONC PCA PROSTATE HSO	VA-ONC PCA TREATMENTS	VA-ONC PCA TREATMENTS	VA-ONC PCA TREATMENTS	SHF (Selected Health Factor)
VA-EL ONC PCA PROSTATE HSO	VA-ONC PCA DIAGNOSIS	VA-ONC PCA DIAGNOSIS	VA-ONC PCA DIAGNOSIS	SHF (Selected Health Factor)
VA-GP ONC PCA PATHO HSO	VA-ONC PCA SURG PATH REPORT	VA-ONC PCA SURG PATH REPORT	VA-ONC PCA SURG PATH REPORT	SP (LAB SURGICAL PATHOLOGY)
VA-EL ONC PCA TESTOSTERONE HSO	VA-ONC PCA TESTOSTERONE	VA-ONC PCA TESTOSTERONE	VA-ONC PCA TESTOSTERONE	SLT (Selected Lab Test)
VA-EL ONC PCA LAST PSA HSO	VA-ONC PCA LAST PSA	VA-ONC PCA LAST PSA	VA-ONC PCA LAST PSA	SLT (Selected Lab Test)

# Post-Installation Set-up

There are several steps to complete after the patch is installed before the dialog should be deployed. Detailed instructions for each step are below.

## 5. Configuring two new Health Summary types/TIU objects/health summary objects

All of the TIU objects are already embedded in the dialog, but two of the six will not display information until the health summary type for each one is mapped to local lab tests. (Click here For detailed information regarding each HSO – see Excel spreadsheet in step 4.4). Before beginning, identify the following local information for each health summary type/object. Detailed instructions for editing the health summary types follow.

HEALTH SUMMARY TYPE: VA-ONC PCA TESTOSTERONE

a. What are the local lab test name(s) for Testosterone?

HEALTH SUMMARY TYPE: VA-ONC PCA LAST PSA

a. What are the local lab test name(s) for Prostate-Specific Antigen?

From Health Summary Maintenance Menu

- 1 Disable/Enable Health Summary Component
- 2 Create/Modify Health Summary Components
- 3 Edit Ad Hoc Health Summary Type
- 4 Rebuild Ad Hoc Health Summary Type
- 5 Resequence a Health Summary Type
- 6 Create/Modify Health Summary Type
- 7 Edit Health Summary Site Parameters
- 8 Health Summary Objects Menu ...
- 9 CPRS Reports Tab 'Health Summary Types List' Menu ...
- 10 CPRS Health Summary Display/Edit Site Defaults ...

Select Health Summary Maintenance Menu <TEST ACCOUNT> Option: 6  
Create/Modify Health Summary Type

Select Health Summary Type: VA-ONC PCA TESTOSTERONE  
VA-Onc PCA Testosterone has (No components)

OK? YES//



WARNING: You are about to edit a Health Summary Type that is being used by a Health Summary Object. Changing the structure of this Health Summary Type will alter how the Object will display.

Do want to continue? NO// y **YES**

NAME: VA-ONC PCA TESTOSTERONE Replace

TITLE: Testosterone Replace

SUPPRESS PRINT OF COMPONENTS WITHOUT DATA: yes//

SUPPRESS SENSITIVE PRINT DATA: NO SSN

LOCK:

OWNER:

Do you wish to copy COMPONENTS from an existing Health Summary Type?

YES//**NO**

Select COMPONENT: **SLT LAB TESTS SELECTED SLT**

SUMMARY ORDER: 5// 5

OCCURRENCE LIMIT: **10**

TIME LIMIT:

HEADER NAME: Lab Tests Selected//

No selection items chosen.

Select new items one at a time in the sequence you want them displayed.

You may select up to 99 items.

Select SELECTION ITEM: *Enter exact name of local TESTOSTERONE lab test.*

*You can enter more than one at the next prompt if needed.*

The Health Summary Type Structure should look similar to this:

Type Name: VA-ONC PCA TESTOSTERONE									
Title: Testosterone									
Owner:									
SUPPRESS PRINT OF COMPONENTS WITHOUT DATA: yes									
SUPPRESS SENSITIVE PRINT DATA:									
Abb	Ord	Component Name	Max Occ	Time	Hos Loc	ICD Text	Pro Nar	CPT Mod	Selection
SLT	5	Lab Tests Selected	10						TESTOSTERONE

From Health Summary Maintenance Menu

- 1 Disable/Enable Health Summary Component
- 2 Create/Modify Health Summary Components
- 3 Edit Ad Hoc Health Summary Type
- 4 Rebuild Ad Hoc Health Summary Type
- 5 Resequence a Health Summary Type
- 6 **Create/Modify Health Summary Type**
- 7 Edit Health Summary Site Parameters
- 8 Health Summary Objects Menu ...
- 9 CPRS Reports Tab 'Health Summary Types List' Menu ...
- 10 CPRS Health Summary Display/Edit Site Defaults ...

Select Health Summary Maintenance Menu <TEST ACCOUNT> Option: **6** Create/Modify Health Summary Type

Select Health Summary Type: **VA-ONC PCA LAST PSA**

VA-ONC PCA LAST PSA has (No components)  
OK? **YES//**

WARNING: You are about to edit a Health Summary Type that is being used by a Health Summary Object. Changing the structure of this Health Summary Type will alter how the Object will display.

Do want to continue? NO// **YES**  
NAME: VA-ONC PCA LAST PSA Replace  
TITLE: PSA//  
SUPPRESS PRINT OF COMPONENTS WITHOUT DATA: yes//  
SUPPRESS SENSITIVE PRINT DATA: NO SSN  
LOCK:  
OWNER:

Do you wish to copy COMPONENTS from an existing Health Summary Type? YES//**NO**  
Select COMPONENT: **SLT LAB TESTS SELECTED**  
SUMMARY ORDER: 5// 5  
OCCURRENCE LIMIT: **10**  
TIME LIMIT:  
HEADER NAME: Lab Tests Selected//

No selection items chosen.

Select new items one at a time in the sequence you want them displayed.  
You may select up to 99 items.

Select SELECTION ITEM: **Enter exact name of local PROSTATE SPECIFIC ANTIGEN (PSA) lab test. You can enter more than one at the next prompt if needed.**

The Health Summary Type Structure should look similar to this:

Type Name: VA-ONC PCA LAST PSA									
Title: PSA									
Owner:									
SUPPRESS PRINT OF COMPONENTS WITHOUT DATA: yes									
SUPPRESS SENSITIVE PRINT DATA:									
Abb	Ord	Component Name	Max Occ	Time	Hos Loc	ICD Text	Pro Nar	CPT Mod	Selection
-----									
SLT	5	Lab Tests Selected	10						PROSTATE SPECIFIC ANTIGEN

## 6. Enabling the dialog

Before using the dialog in shared templates or linking to a note title you must first add into the TIU Template Reminder Dialog Parameter list. Adding dialog to the TIU Reminder Dialog Parameter (starting from the Reminder Manager Menu)

Select Reminder Managers Menu <TEST ACCOUNT> Option: CP CPRS

Reminder Configuration

- CA Add/Edit Reminder Categories
- CL CPRS Lookup Categories
- CS CPRS Cover Sheet Reminder List
- MH Mental Health Dialogs Active
- PN Progress Note Headers
- RA Reminder GUI Resolution Active
- TIU TIU Template Reminder Dialog Parameter**
- DL Default Outside Location
- PT Position Reminder Text at Cursor
- NP New Reminder Parameters
- GEC GEC Status Check Active
- WH WH Print Now Active

Select CPRS Reminder Configuration <TEST ACCOUNT> Option: **TIU** TIU Template Reminder Dialog Parameter

Reminder Dialogs allows as Templates may be set for the following:

- 1 User USR [choose from NEW PERSON]
  - 3 Service SRV [choose from SERVICE/SECTION]
  - 4 Division DIV [NAME OF YOUR DIVISION]
  - 5 System SYS [YOURSERVER.YOURSITE.MED.VA.GOV]
- Enter selection: **5** System [YOURSERVER.YOURSITE.MED.VA.GOV]  
 Setting Reminder Dialogs allows as Templates for System: YOURSERVER.YOURSITE.MED.VA.GOV

Select Display Sequence: **?** **← enter ? to determine last number in sequence**

Display Sequence Value

- 1 DAY COMBINED TOBACCO USER
- 2 PATIENT EDUCATION ASSESSMENT
- 3 IMMUNIZATION CLINIC DIALOG
- 4 RD 580 NEU 562 DYSPHAGIA SCREENING TOOL
- 5 DAY DISCHARGE INSTRUCTIONS DIALOG

This list is condensed for space reasons.

....  
 412 NON VA CARE COORDINATION NOTE (D) ← last sequence number on my list yours will be different

Select Display Sequence: 413

Are you adding 413 as a new Display Sequence? Yes// YES

Display Sequence: 413// 413

Clinical Reminder Dialog: VA-ONCOLOGY PROSTATE reminder dialog NATIONAL

...OK? Yes// (Yes)

**7. Remove disable from reminder dialog**

Open reminder dialog manager, change view to ‘DIALOG’ locate VA-ONCOLOGY PROSTATE dialog on the list.

- a. Edit the VA-ONCOLOGY PROSTATE entry and remove the DISABLE field.
- b. Remember VA-ONCOLOGY PROSTATE will not have an associated source reminder.

```
Select Item: Next Screen// ED Edit/Delete Dialog
NAME: VA-ONCOLOGY PROSTATE (Disabled) Replace
DISABLE: DISABLED IN EXCHANGE Replace @
SURE YOU WANT TO DELETE? Y (Yes)
CLASS: NATIONAL//
SPONSOR: VHA ONCOLOGY//
REVIEW DATE: MAY 2013//
SOURCE REMINDER: //
```

The National Oncology Program Office recommends that the VA Oncology Prostate Cancer reminder dialog be used as a template and not a standalone note, but this is a local decision. Collaborate with Hematology/Oncology staff to determine how dialog will be used. The National Oncology Program Office will be releasing additional reminder dialogs so it is important to establish an appropriate location. Please follow any local naming convention guidelines in place at your facility.

=====

While using the TIU editors if at any time the setting do not look correct **NEVER** click the apply button, but instead click **CANCEL**, then start over

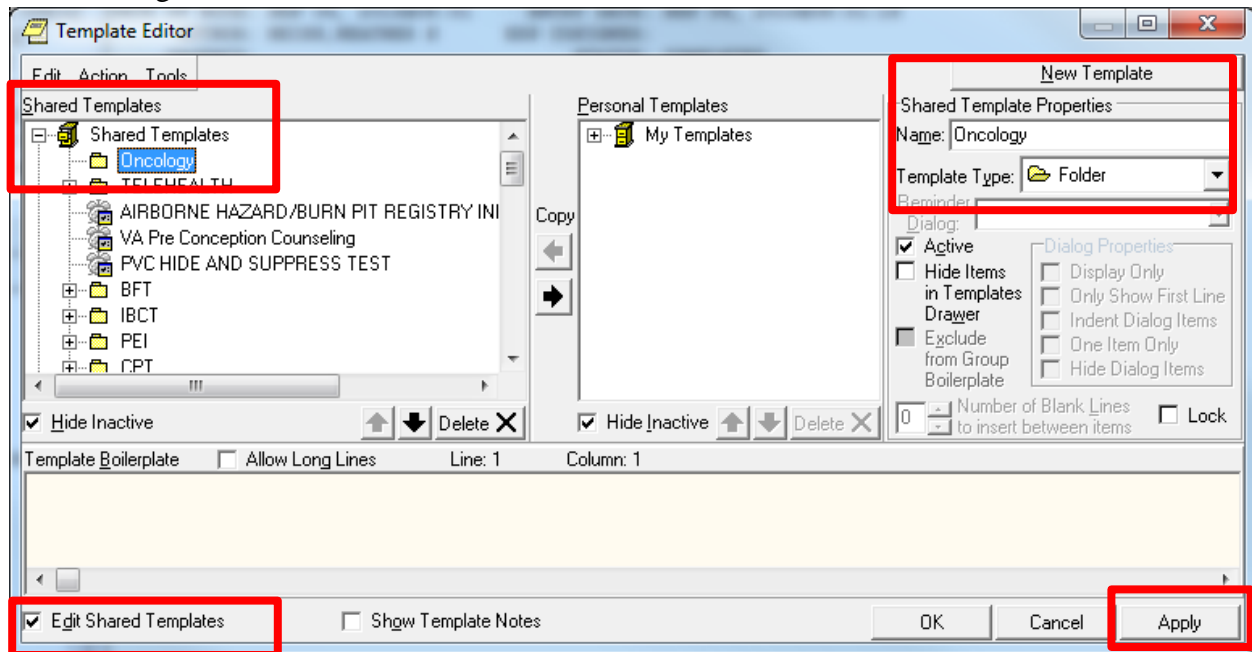
=====

**8. Creating a shared folder**

- Open template editor
- Click + sign Shared Templates
- Click on NEW TEMPLATE button
- Type ONCOLOGY (this is only a suggestion-your site may have local naming convention guidelines that should be followed)
- Select FOLDER in Template Type box

Click APPLY lower right corner

### Ex: Creating Shared Folder



## 9. Creating a shared template

Open template editor

Click + Shared templates

Locate ONCOLOGY folder and click on it

Click NEW TEMPLATE button

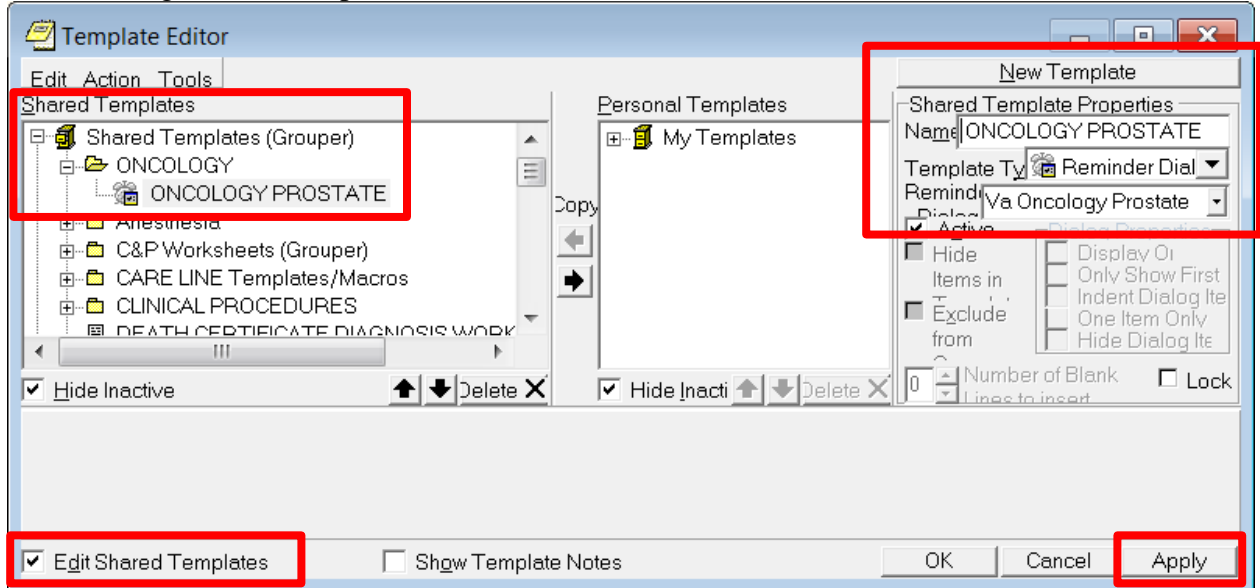
Type ONCOLOGY PROSTATE –this is a suggestion the naming convention is a local decision

Select REMINDER DIALOG in template Type box

Type VA-ONCOLOGY PROSTATE in Reminder Dialog box

Click APPLY lower right corner

EX: Creating Shared Template



**10. Creating a local progress note title**

- From the Document Definitions (Manager) Menu: create document definitions
- Type Next Level at prompt
- Enter corresponding number for Progress Notes at prompt
- Hit enter until you find Medicine
- Type Next Level and enter corresponding number for Medicine at prompt
- Type Title at prompt
- Type VA-Oncology Prostate Template at prompt
- Map title to VHA ENTERPRISE STANDARD TITLE:  
HEMATOLOGY AND ONCOLOGY NOTE
- Enter A at status prompt

EX: Creating Note Title

```

--- Manager Document Definition Menu ---

1      Edit Document Definitions
2      Sort Document Definitions
3      Create Document Definitions
4      Create Objects
5      Create TIU/Health Summary Objects

Select Document Definitions (Manager) <TEST ACCOUNT> Option: 3 Create
Document Definitions.....
    
```

Name	Type
1 CLINICAL DOCUMENTS	CL
2 PROGRESS NOTES	CL
3 ADDENDUM	DC
4 DISCHARGE SUMMARY	CL
5 CLINICAL PROCEDURES	CL
6 LR LABORATORY REPORTS	CL
7 SURGICAL REPORTS	CL

**+ ?Help >ScrollRight PS/PL PrintScrn/List +/- >>>**  
 Class/DocumentClass      Next Level      Detailed Display/Edit  
 (Title)                      Restart                      Status...  
 (Component)                Boilerplate Text            Delete  
 Select Action: Next Level// **next Next Level**  
 Select CLINICAL DOCUMENTS Item (Line 2-7): **2**

Name	Type
2 PROGRESS NOTES	CL
3 MEDICINE	DC
4 MEDICAL OBSERVATION NOTE	TL
5 CANCER CARE	TL
6 CARDIAC CATH LAB PROCEDURE REPORT (T)	TL
7 CARDIAC ELECTROPHYSIOLOGY PROCEDURE REPORT (T)	TL
8 CARDIOLOGY ACS TEAM FOLLOW-UP NOTE	TL
9 CARDIOLOGY AICD IMPLANTATION REPORT	TL

**+ ?Help >ScrollRight PS/PL PrintScrn/List +/- >>>**  
 (Class/DocumentClass)      Next Level      Detailed Display/Edit  
 Title                              Restart                      Status...  
 (Component)                    Boilerplate Text            Delete  
 Select Action: Next Screen// **title Title**  
 Enter the Name of a new MEDICAL SERVICE: **ONCOLOGY PROSTATE TEMPLATE**  
 CLASS OWNER: CLINICAL COORDINATOR// **CLINICAL COORDINATOR**

EVERY Local Title must be mapped to a VHA Enterprise Standard Title.

Direct Mapping to Enterprise Standard Title...  
 Your LOCAL Title is: ONCOLOGY PROSTATE TEMPLATE

NOTE: Only ACTIVE Titles may be selected...

Select VHA ENTERPRISE STANDARD TITLE: **HEMATOLOGY AND ONCOLOGY NOTE**  
 I found a match of: HEMATOLOGY AND ONCOLOGY NOTE  
 ... OK? Yes// **YES**

Ready to map LOCAL Title: VA-ONCOLOGY PROSTATER TEMPLATE to  
 VHA Enterprise Standard Title: HEMATOLOGY AND ONCOLOGY NOTE.  
 ... OK? Yes//**YES**

STATUS: (A/I/T): INACTIVE// **A** ACTIVE Entry Activated.

## 11. Linking progress note to reminder dialog

From Template Editor

Edit Shared Template

Click + Document Titles

Click NEW TEMPLATE button

Type ONCOLOGY PROSTATE in Name box

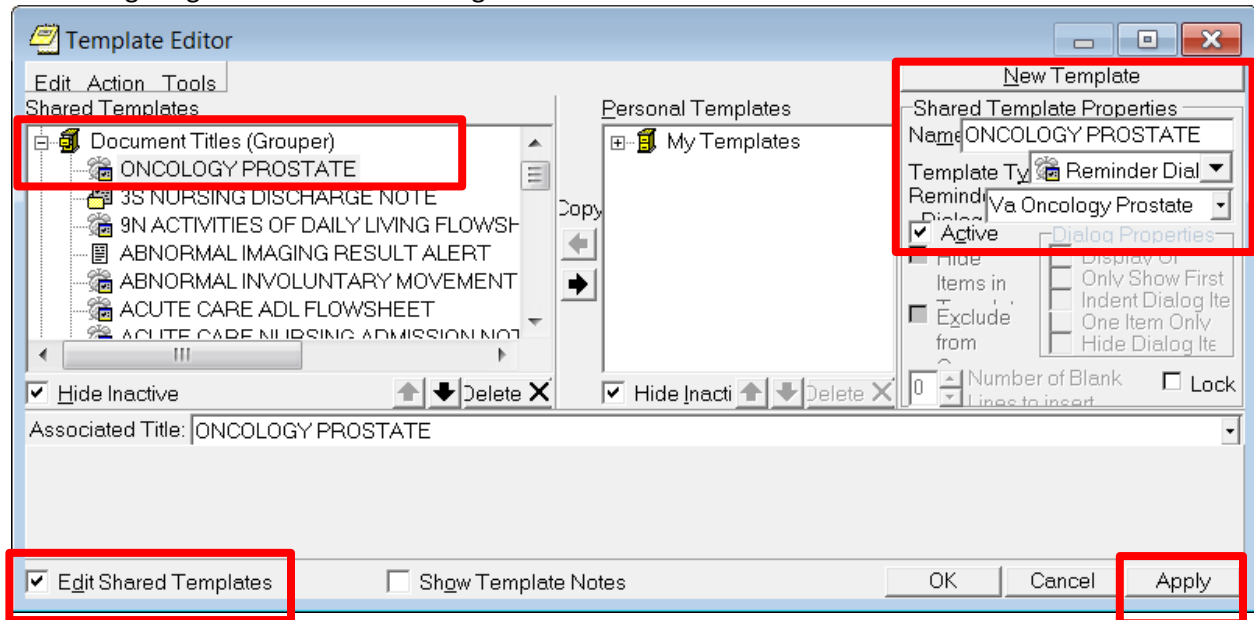
Click down arrow and Click on REMINDER DIALOG in Template Type Box

Type VA-ONCOLOGY in Reminder Dialog box

Type ONCOLOGY PROSTATE Template in Associated Title Box

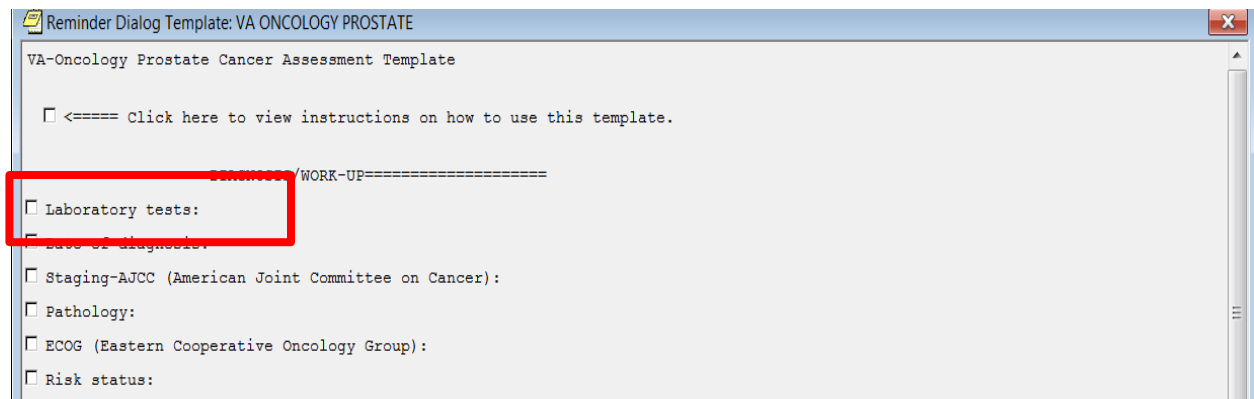
Click APPLY in lower right corner

EX: Linking Progress Note Title to Dialog



## 12. Testing the patient data objects

Open the VA-ONCOLOGY PROSTATE dialog and check-open the LABORATORY TESTS section.





Example 1-patient with no previous TESTOSTERONE/PSA lab test results

Laboratory tests:

Choose Laboratory Test(s)

<==== Click here to include these results in your progress note  
No PSA data available

Click here to add additional serum PSA results:

<==== Click here to include these results in your progress note  
No TESTOSTERONE data available

Click here to add additional TESTOSTERONE results:

Other test(s):

Example 2-patient w/previous TESTSOTERONE/PSA lab test results

Laboratory tests:

Choose Laboratory Test(s)

<==== Click here to include these results in your progress note

Collection DT	Specimen	Test Name	Result	Units	Ref Range
12/19/2012 13:30	SERUM	PSA	0.77	NG/ML	0 - 4
Comment: SPECIMEN COLLECTOR: Drawn at Lima CBOC					
09/01/2011 11:20	SERUM	PSA	0.57	NG/ML	0 - 4
Comment: SPECIMEN COLLECTOR: Drawn at Lima CBOC					
04/29/2010 14:00	SERUM	PSA	0.63	NG/ML	0 - 4
Comment: SPECIMEN COLLECTOR: Drawn at Lima CBOC					

Click here to add additional serum PSA results:

<==== Click here to include these results in your progress note

Collection DT	Specimen	Test Name	Result	Units	Ref Range
11/24/2008 09:49	SERUM	TESTOSTERONE	630	ng/dL	241 - 827
Comment: SPECIMEN COLLECTOR: Drawn at Lima CBOC					

# VA-Oncology Symptom Assessment Scale (VSAS) Reminder Dialog

## Component Inventory

The VA-Oncology Symptom Assessment Scale Reminder Dialog contains:

- 1 dialog
- 13 health factor categories
- 143 health factors
- 1 GMRV Vital type
- 1 TIU template field

### 1. Reminder Dialog Name

VA-ONCOLOGY SYMPTOM ASSESSMENT SCALE

### 2. Health Factors

See [Appendix D: VSAS Health Factors](#) for complete list

### 3. GMRV Vital Type

The VSAS reminder dialog contains the GMRV vital type  
PAIN

### 4. TIU Template Field

The VSAS reminder dialog contains one template field that is required if clicked open.

VA-ONC WP 4 LINES (REQ)

## Post-Installation Set-up

There are several steps to complete after the patch is installed before the dialog should be deployed. Detailed instructions for each step are below.

### 5. Enabling the dialog

Adding dialog to the TIU Reminder Dialog Parameter (starting from the Reminder Manager Menu)

Select Reminder Managers Menu <TEST ACCOUNT> Option: **CP** CPRS Reminder Configuration

CA Add/Edit Reminder Categories  
CL CPRS Lookup Categories  
CS CPRS Cover Sheet Reminder List  
MH Mental Health Dialogs Active  
PN Progress Note Headers  
RA Reminder GUI Resolution Active  
**TIU TIU Template Reminder Dialog Parameter**  
DL Default Outside Location  
PT Position Reminder Text at Cursor  
NP New Reminder Parameters  
GEC GEC Status Check Active  
WH WH Print Now Active

Select CPRS Reminder Configuration <TEST ACCOUNT> Option: **TIU** TIU Template Reminder Dialog Parameter

Reminder Dialogs allows as Templates may be set for the following:

- 1 User       USR [choose from NEW PERSON]
- 3 Service    SRV [choose from SERVICE/SECTION]
- 4 Division   DIV [NAME OF YOUR DIVISION]
- 5 System     SYS [YOURSERVER.YOURSITE.MED.VA.GOV]

Enter selection: 5   System [YOURSERVER.YOURSITE.MED.VA.GOV]

Setting Reminder Dialogs allows as Templates for System:

YOURSERVER.YOURSITE.MED.VA.GOV

Select Display Sequence:   ?   ← enter ? to determine last sequence number

Display Sequence Value

-----  
1 DAY COMBINED TOBACCO USER  
2 PATIENT EDUCATION ASSESSMENT  
3 IMMUNIZATION CLINIC DIALOG  
4 RD 580 NEU 562 DYSPHAGIA SCREENING TOOL  
...412 NON VA CARE COORDINATION NOTE (D) ← last sequence  
**number on my list yours will be different (con't next page)**

This list is  
condensed for  
space reasons.

Select Display Sequence: 413

Are you adding 413 as a new Display Sequence? Yes// YES

Display Sequence: 413// 413

Clinical Reminder Dialog: VA-ONCOLOGY SYMPTOM ASSESSMENT SCALE reminder dialog  
NATIONAL

...OK? Yes// (Yes)

## 6. Remove disabled from reminder dialog

Open reminder dialog manager, change view to 'DIALOG' locate VA-ONCOLOGY SYMPTOM ASSESSMENT SCALE dialog on the list.

- a. Edit the VA-ONCOLOGY SYMPTOM ASSESSMENT SCALE entry and remove the DISABLE field.
- b. Remember VA-ONCOLOGY SYMPTOM ASSESSMENT SCALE will not have an associated source reminder.

Select Item: Next Screen// **ED** Edit/Delete Dialog

```
NAME: VA-ONCOLOGY SYMPTOM ASSESSMENT SCALE  
(Disabled) Replace  
DISABLE: DISABLED IN EXCHANGE Replace @  
SURE YOU WANT TO DELETE? Y (Yes)  
CLASS: NATIONAL//  
SPONSOR: VHA ONCOLOGY//  
REVIEW DATE: MAY 2013//  
SOURCE REMINDER: //
```

The National Oncology Program Office recommends that the VSAS reminder dialog be used as a template and not a standalone note, but this is a local decision. Collaborate with Hematology/Oncology staff to determine how dialog will be used. The National Oncology Program Office will be releasing additional reminder dialogs so it is important to establish an appropriate location. Please follow any local naming convention guidelines in place at your facility.

---

While using the TIU editors if at any time the setting does not look correct, **NEVER** click the apply button, but instead click **CANCEL**, then start over

---

## 7. Creating a shared folder

Open template editor

Click + sign Shared Templates

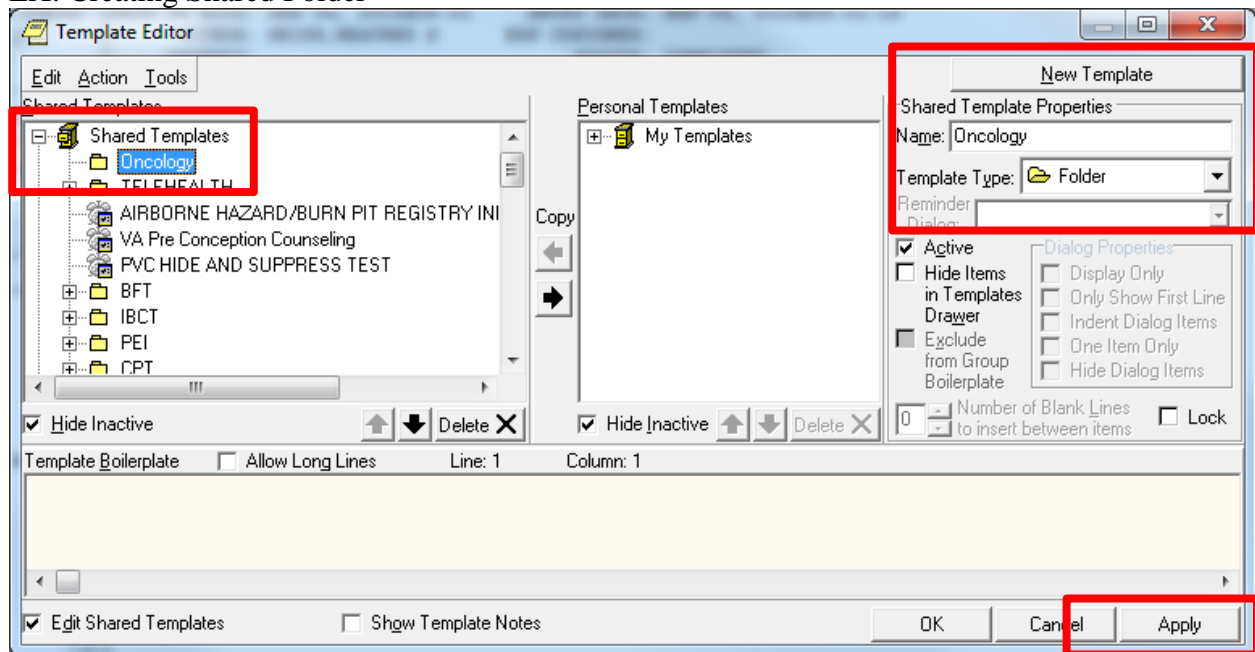
Click on New Template button

Type Oncology – this is a suggestion - the folder name is a local decision

Select folder in Template Type box

Click Apply lower right corner

### EX: Creating Shared Folder



## 8. Creating shared templates

Open template editor

Click + Shared templates

Locate Oncology folder and click on it

Click New Template button

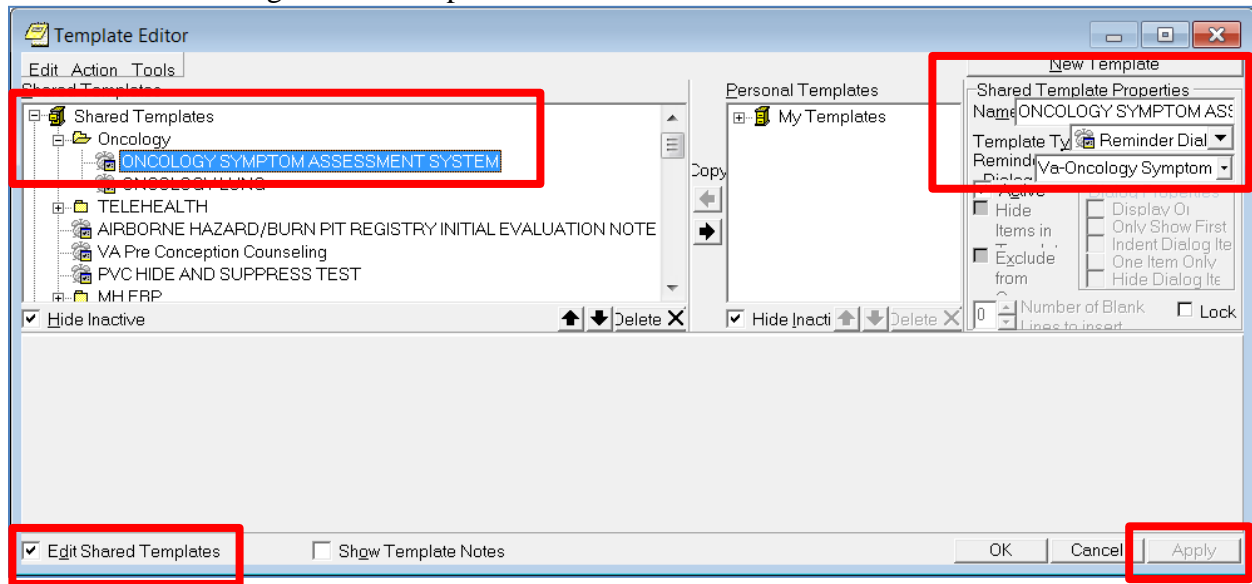
Type ONCOLOGY SYMPTOM ASSESSMENT SCALE – the template name is a local decision

Select Reminder Dialog in template Type box

Type VA-ONCOLOGY SYMPTOM ASSESSMENT SCALE in Reminder Dialog box

Click Apply lower right corner

## EX: Creating Shared Template



### 9. Creating a local progress note title

From the Document Definitions (Manager) Menu: **create document definitions**

Type Next Level at prompt

Enter corresponding number for Progress Notes at prompt

Hit enter until you find Medicine

Type Next Level and enter corresponding number for Medicine at prompt

Type Title at prompt

Type Oncology Symptom Assessment Scale at prompt – this is a suggestion - your site may have a local naming convention that should be followed

Map title to VHA STANDARD ENTERPRISE TITLE: HEMATOLOGY AND ONCOLOGY NOTE

Enter A at status prompt

### EX: Creating Progress Note Title

Manager Document Definition Menu ---

- 1 Edit Document Definitions
- 2 Sort Document Definitions
- 3 Create Document Definitions
- 4 Create Objects
- 5 Create TIU/Health Summary Objects

Select Document Definitions (Manager) Option: 3 Create Document Definitions.....

Name	Type
1 CLINICAL DOCUMENTS	CL
2 PROGRESS NOTES	CL
3 ADDENDUM	DC
4 DISCHARGE SUMMARY	CL
5 CLINICAL PROCEDURES	CL
6 LR LABORATORY REPORTS	CL
7 SURGICAL REPORTS	CL

+ ?Help >ScrollRight PS/PL PrintScr/List +/- >>>

Class/DocumentClass      Next Level      Detailed Display/Edit  
 (Title)                      Restart                      Status...  
 (Component)                Boilerplate Text           Delete

Select Action: Next Level// next Next Level  
 Select CLINICAL DOCUMENTS Item (Line 2-7): 2

Name	Type
2 PROGRESS NOTES	CL
3 MEDICINE	DC
4 MEDICAL OBSERVATION NOTE	TL
5 CANCER CARE	TL
6 CARDIAC CATH LAB PROCEDURE REPORT (T)	TL
7 CARDIAC ELECTROPHYSIOLOGY PROCEDURE REPORT (T)	TL
8 CARDIOLOGY ACS TEAM FOLLOW-UP NOTE	TL
9 CARDIOLOGY AICD IMPLANTATION REPORT	TL

+ ?Help >ScrollRight PS/PL PrintScr/List +/- >>>

(Class/DocumentClass)      Next Level      Detailed Display/Edit  
 Title                              Restart                      Status...  
 (Component)                Boilerplate Text           Delete

Select Action: Next Screen// title Title  
 Enter the Name of a new MEDICAL SERVICE: ONCOLOGY SYMPTOM ASSESSMENT SCALE (follow any local naming convention guidelines/policies)  
 CLASS OWNER: CLINICAL COORDINATOR// CLINICAL COORDINATOR

EVERY Local Title must be mapped to a VHA Enterprise Standard Title.

Direct Mapping to Enterprise Standard Title...  
 Your LOCAL Title is: ONCOLOGY SYMPTOM ASSESSMENT SCALE

NOTE: Only ACTIVE Titles may be selected...

Select VHA ENTERPRISE STANDARD TITLE: HEMATOLOGY AND ONCOLOGY NOTE  
 I found a match of: HEMATOLOGY AND ONCOLOGY NOTE  
 ... OK? Yes// YES

Ready to map LOCAL Title: ONCOLOGY SYMPTOM ASSESSMENT SCALE to  
 VHA Enterprise Standard Title: HEMATOLOGY AND ONCOLOGY NOTE  
 ... OK? Yes//YES

STATUS: (A/I/T): INACTIVE// A ACTIVE Entry Activated.

## 10. Linking progress note to reminder dialog

From Template Editor

Edit Shared Template

Click + Document Titles

Click New Template button

Type Oncology Symptom Assessment Scale in Name box - or the specific template name you created Step 9

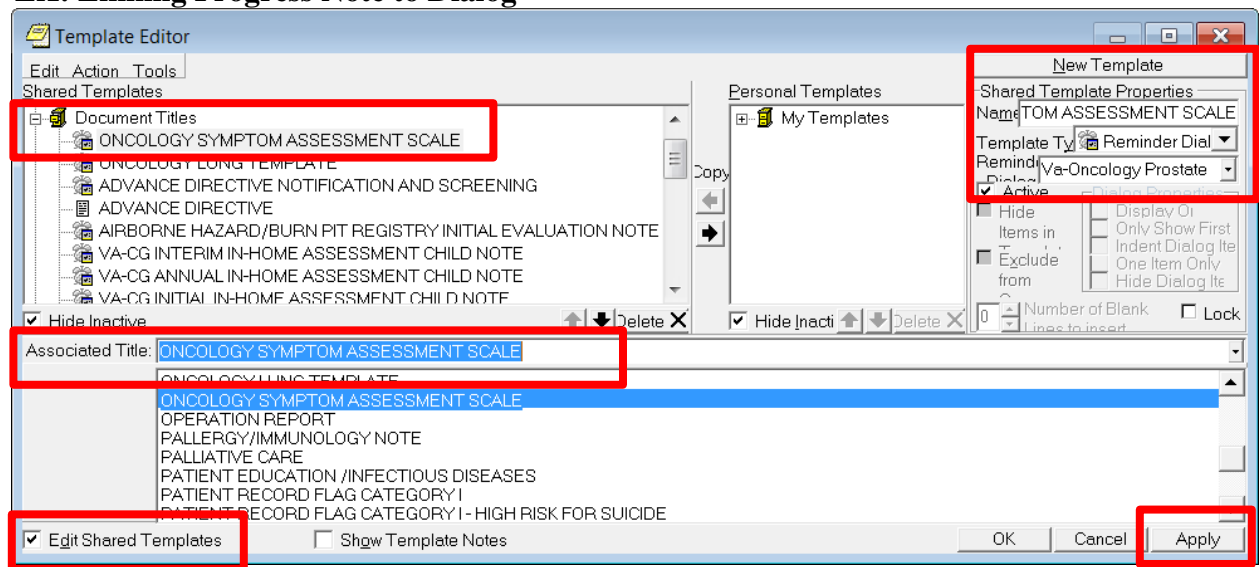
Click down arrow and Click on Reminder Dialog in Template Type Box

Type VA-Oncology Symptom Assessment Scale in Reminder Dialog box

Type Oncology Symptom Assessment Scale in Associated Title Box

Click Apply in lower right corner

### EX: Linking Progress Note to Dialog



## Appendix A: Installation Example

Select Installation <TEST ACCOUNT> Option: 1 Load a Distribution

Enter a Host File: <your directory> PXRМ\_2\_0\_38.KID

KIDS Distribution saved on Nov 24, 2014@13:07:10

Comment: LUNG ONOCOLGY TEMPLATES

This Distribution contains Transport Globals for the following Package(s):

OK to continue with Load? NO// YES

Distribution OK!

Want to Continue with Load? YES//

Loading Distribution...



PXRM\*2.0\*38

Use INSTALL NAME: PXRM\*2.0\*38 to install this Distribution.

- 1 Load a Distribution
- 2 Verify Checksums in Transport Global
- 3 Print Transport Global
- 4 Compare Transport Global to Current System
- 5 Backup a Transport Global
- 6 Install Package(s)  
Restart Install of Package(s)  
Unload a Distribution

Select Installation <TEST ACCOUNT> Option: INstall Package(s)

Select INSTALL NAME: PXRM\*2.0\*38 12/19/14@07:03:51

=> LUNG ONOCOLGY TEMPLATES ;Created on Nov 24, 2014@13:07:10

This Distribution was loaded on Dec 19, 2014@07:03:51 with header of  
LUNG ONOCOLGY TEMPLATES ;Created on Nov 24, 2014@13:07:10

It consisted of the following Install(s):

PXRM\*2.0\*38

Checking Install for Package PXRM\*2.0\*38

Install Questions for PXRM\*2.0\*38

Incoming Files:

811.8 REMINDER EXCHANGE (including data)

Note: You already have the 'REMINDER EXCHANGE' File.

I will OVERWRITE your data with mine.

Want KIDS to INHIBIT LOGONs during the install? NO//

Want to DISABLE Scheduled Options, Menu Options, and Protocols? NO//

Enter the Device you want to print the Install messages.

You can queue the install by enter a 'Q' at the device prompt.

Enter a '^' to abort the install.

DEVICE: HOME// TELNET PORT

-----

Install Started for PXRM\*2.0\*38 :

Dec 19, 2014@07:04:02

Build Distribution Date: Nov 24, 2014

Installing Routines:

Dec 19, 2014@07:04:02

Running Pre-Install Routine: PRE^PXRMP38I

Installing Data Dictionaries:

Dec 19, 2014@07:04:02

Installing Data:

Dec 19, 2014@07:04:05

Running Post-Install Routine: POST^PXRMP38I

There are 2 Reminder Exchange entries to be installed.

1. Installing Reminder Exchange entry VA-ONCOLOGY LUNG TEMPLATE PXRMP\*2.0\*38
2. Installing Reminder Exchange entry VA-PATCH 38 POST COMPONENTS

Updating Routine file...

Updating KIDS files...

PXRMP\*2.0\*38 Installed.

Dec 19, 2014@07:09:11

Not a production UCI

PXRMP\*2.0\*38

Install Completed

## Appendix B: Lung Cancer Health Factors

---

### LUNG CANCER DIALOG

#### CATEGORY: Oncology (ONC) Lung Cancer Follow-Up

ONC Lung Referral-Other  
ONC Lung Referral-Service Not Available  
ONC Lung Referral-Not Appropriate  
ONC Lung Referral-Patient Declined  
ONC Lung Referral-Yes  
ONC Lung Follow Up-Progression  
ONC Lung Follow Up-No Recurrence  
ONC Lung Follow Up-Recurrence  
ONC Lung Follow Up-Stable Disease  
ONC Lung Follow Up-Partial Response  
ONC Lung Follow Up-Complete Response

#### CATEGORY: Oncology (ONC) Lung Cancer Treatments

ONC Lung Chemo Stopped-Other  
ONC Lung Chemo Stopped-Patient Request  
ONC Lung Chemo Stopped-Progression  
ONC Lung Chemo Stopped-Toxicity  
ONC Lung Chemo Stopped-Plan Completed  
ONC Lung Chemo Other Stop Date  
ONC Lung Chemo Other Start Date  
ONC Lung Bevacizumab Stop Date  
ONC Lung Bevacizumab Start Date  
ONC Lung Ceritinib Stop Date  
ONC Lung Ceritinib Start Date  
ONC Lung Crizotinib Stop Date  
ONC Lung Crizotinib Start Date  
ONC Lung Erlotinib Stop Date  
ONC Lung Erlotinib Start Date  
ONC Lung Irinotecan Stop Date  
ONC Lung Irinotecan Start Date  
ONC Lung Etoposide Stop Date  
ONC Lung Etoposide Start Date  
ONC Lung Vinorelbine Stop Date  
ONC Lung Vinorelbine Start Date  
ONC Lung Gemtabine Stop Date  
ONC Lung Gemtabine Start Date  
ONC Lung Pemetrexed Stop Date  
ONC Lung Pemetrexed Start Date  
ONC Lung Paclitaxel Stop Date  
ONC Lung Paclitaxel Start Date  
ONC Lung Docetaxel Stop Date

ONC Lung Docetaxel Start Date  
ONC Lung Carboplatin Stop Date  
ONC Lung Carboplatin Start Date  
ONC Lung Cisplatin Stop Date  
ONC Lung Cisplatin Start Date  
ONC Lung Chemo Intent-Not Determined  
ONC Lung Chemo Intent-Palliative  
ONC Lung Chemo Intent-Concurrent  
ONC Lung Chemo Intent-Neoadjuvant  
ONC Lung Chemo Intent-Adjuvant  
ONC Lung Chemo Not Admin-Other  
ONC Lung Chemo Not Admin-Pt Declined  
ONC Lung Chemo Not Admin-Not Recommended  
ONC Lung RT Stopped-Other  
ONC Lung RT Stopped-Patient Request  
ONC Lung RT Stopped-Progression  
ONC Lung RT Stopped-Toxicity  
ONC Lung RT Stopped-Plan Completed  
ONC Lung Stereotactic Body RT-No  
ONC Lung Stereotactic Body RT-Yes  
ONC Lung Other RT Stop Date  
ONC Lung Other RT Start Date  
ONC Lung Bone RT Stop Date  
ONC Lung Bone RT Start Date  
ONC Lung Brain RT Stop Date  
ONC Lung Brain RT Start Date  
ONC Lung Chest RT Stop Date  
ONC Lung Chest RT Start Date  
ONC Lung RT Intent-Not Determined  
ONC Lung RT Intent-Palliative  
ONC Lung RT Type-Concurrent  
ONC Lung RT Type-Neoadjuvant  
ONC Lung RT Type-Adjuvant  
ONC Lung RT Not Admin-Other  
ONC Lung RT Not Admin-Pt Declined  
ONC Lung RT Not Admin-Contraindicated  
ONC Lung Surgery Outcome-Not Determined  
ONC Lung Surgery Outcome-Result Pending  
ONC Lung Surgery Outcome-Not Resectable  
ONC Lung Surgery Outcome-+ Margins  
ONC Lung Surgery Outcome-Clear Margins  
ONC Lung Surgery Type-Wedge Resection  
ONC Lung Surgery Type-Segmentectomy  
ONC Lung Surgery Type-Pneumonectomy  
ONC Lung Surgery Type-Lobectomy  
ONC Lung Surgery No-Other Reason

ONC Lung Surgery No-Patient Declined  
ONC Lung Surgery-Not Recommended

**CATEGORY:** Oncology (ONC) Lung Cancer Diagnoses

ONC Lung Molecular Test-Other  
ONC Lung ALK Translocation-Rearranged  
ONC Lung ALK Translocation-Normal  
ONC Lung ALK Translocation-Result Pending  
ONC Lung ALK Translocation-Not Done  
ONC Lung EGFR Test-Mutant  
ONC Lung EGFR Test-Wild Type  
ONC Lung EGFR Test-Results Pending  
ONC Lung EGFR Test-Not Done  
ONC Lung Histology-Other  
ONC Lung Histology-SCLC  
ONC Lung Histology-NSCLC, NOS  
ONC Lung Histology-Large Cell  
ONC Lung Histology-Squamous Cell  
ONC Lung Histology-Adenocarcinoma  
ONC Lung Pathological-TNM Unknown  
ONC Lung Pathological-Any T, Any N, M1  
ONC Lung Pathological-T4, N3, M0  
ONC Lung Pathological-T3, N3, M0  
ONC Lung Pathological-T2, N3, M0  
ONC Lung Pathological-T1, N3, M0  
ONC Lung Pathological-T4, N2, M0  
ONC Lung Pathological-T4, N1, M0  
ONC Lung Pathological-T4, N0, M0  
ONC Lung Pathological-T3, N2, M0  
ONC Lung Pathological-T3, N1, M0  
ONC Lung Pathological-T2, N2, M0  
ONC Lung Pathological-T1, N2, M0  
ONC Lung Pathological-T3, N0, M0  
ONC Lung Pathological-T2, N1, M0  
ONC Lung Pathological-T1, N1, M0  
ONC Lung Pathological-T2, N0, M0  
ONC Lung Pathological-T1, N0, M0  
ONC Lung Pathological-T1S, N0, M0  
ONC Lung Pathological-Summary Stage Unk  
ONC Lung Pathological-Summary Stage Ext  
ONC Lung Pathological-Summary Stage Lim  
ONC Lung Pathological-Summary Stage I  
ONC Lung Pathological-Summary Stage IV  
ONC Lung Pathological-Summary Stage IIIB  
ONC Lung Pathological-Summary Stage IIIA  
ONC Lung Pathological-Summary Stage III

ONC Lung Pathological-Summary Stage IIB  
ONC Lung Pathological-Summary Stage IIA  
ONC Lung Pathological-Summary Stage II  
ONC Lung Pathological-Summary Stage IB  
ONC Lung Pathological-Summary Stage IA  
ONC Lung Pathological-Summary Stage 0  
ONC Lung Clinical-TNM Unknown  
ONC Lung Clinical Stage-Any T, Any N, M1  
ONC Lung Clinical-T4, N3, M0  
ONC Lung Clinical-T3, N3, M0  
ONC Lung Clinical-T2, N3, M0  
ONC Lung Clinical-T1, N3, M0  
ONC Lung Clinical-T4, N2, M0  
ONC Lung Clinical-T4, N1, M0  
ONC Lung Clinical-T4, N0, M0  
ONC Lung Clinical-T3, N2, M0  
ONC Lung Clinical-T3, N1, M0  
ONC Lung Clinical-T2, N2, M0  
ONC Lung Clinical-T1, N2, M0  
ONC Lung Clinical-T3, N0, M0  
ONC Lung Clinical-T2, N1, M0  
ONC Lung Clinical-T1, N1, M0  
ONC Lung Clinical-T2, N0, M0  
ONC Lung Clinical-T1, N0, M0  
ONC Lung Clinical-TIS, N0, M0  
ONC Lung Clinical-Summary Stage Unknown  
ONC Lung Clinical-Summary Stage Extens  
ONC Lung Clinical-Summary Stage Limited  
ONC Lung Clinical-Summary Stage IV  
ONC Lung Clinical-Summary Stage IIIB  
ONC Lung Clinical-Summary Stage IIIA  
ONC Lung Clinical-Summary Stage III  
ONC Lung Clinical-Summary Stage IIB  
ONC Lung Clinical-Summary Stage IIA  
ONC Lung Clinical-Summary Stage II  
ONC Lung Clinical-Summary Stage IB  
ONC Lung Clinical-Summary Stage IA  
ONC Lung Clinical-Summary Stage I  
ONC Lung Clinical-Summary Stage 0  
ONC Lung Initial Diagnosis Date-  
ONC Lung First Abnormal Radiology Date-  
ONC Lung ECOG-0  
ONC Lung ECOG-1  
ONC Lung ECOG-2  
ONC Lung ECOG-3  
ONC Lung ECOG-4

ONC Lung ECOG-5  
ONC Lung ECOG-Unknown  
ONC Lung Presented To Tumor Board-Yes  
ONC Lung Presented To Tumor Board-No  
ONC Lung Presented To Tumor Board-N/A  
ONC Lung LN Sampling-Ultrasound  
ONC Lung LN Sampling-Mediastinoscopy  
ONC Lung LN Sampling-Surgery  
ONC Lung LN Sampling Done-No  
ONC Lung Chemo Intent Discussed-Yes  
ONC Lung Chemo Intent Discussed-No  
ONC Lung Doublet No-Contraindicated  
ONC Lung Doublet No-Declined  
ONC Lung Doublet No-N/A  
ONC Lung Doublet No-Other  
ONC Lung Bevacizumab Not Admin-Contra  
ONC Lung Bevacizumab Not Admin-Declined  
ONC Lung Bevacizumab Not Admin-N/A  
ONC Lung Bevacizumab Not Admin-Other  
ONC Lung RT Intent-Curative  
ONC Lung RT Intent Discussed-Yes  
ONC Lung RT Intent Discussed-No  
ONC Lung RT Stopped-Site Change  
ONC Lung RT Site-Other  
ONC Lung RT Site-Bone  
ONC Lung RT Site-Brain  
ONC Lung RT Site-Chest  
ONC Lung Chemo Type-Other  
ONC Lung Chemo Type-Bevacizumab  
ONC Lung Chemo Type-Ceritinib  
ONC Lung Chemo Type-Crizotinib  
ONC Lung Chemo Type-Erlotinib  
ONC Lung Chemo Type-Irinotecan  
ONC Lung Chemo Type-Etoposide  
ONC Lung Chemo Type-Vinorelbine  
ONC Lung Chemo Type-Gemcitabine  
ONC Lung Chemo Type-Pemetrexed  
ONC Lung Chemo Type-Paclitaxel  
ONC Lung Chemo Type-Docetaxel  
ONC Lung Chemo Type-Carboplatin  
ONC Lung Chemo Type-Cisplatin  
ONC Lung PCU Referral-No

# Appendix C: Prostate Cancer Health Factors

---

## PROSTATE CANCER DIALOG

**CATEGORY:** Prostate Cancer (ONC PCA) Treatments

ONC PCA Clinical Trial Stop Date-

ONC PCA Clinical Trial Start Date-

**CATEGORY:** Prostate Cancer (ONC PCA) Follow-Up

ONC PCA Hospice Referral:

ONC PCA Hospice Referral-Not Available

ONC PCA Hospice Referral No-Not Eligible

ONC PCA Hospice Referral-Pt Declined

ONC PCA Hospice/Palliative Referral-No

ONC PCA Hospice/Palliative Referral-Yes

ONC PCA Follow Up-Recurrence of Disease

ONC PCA Follow Up-No Recurrence

ONC PCA Follow Up-Progression of Disease

ONC PCA Follow Up-Stable Disease

ONC PCA Follow Up-Partial Response

ONC PCA Follow Up-Complete Response

ONC PCA Cryotherapy Stop Date-

ONC PCA Cryotherapy Start Date-

ONC PCA Cryotherapy Not Admin-

ONC PCA Cryotherapy-Pt Declined

ONC PCA Cryotherapy-Not Recommended

ONC PCA Radiopharm-Pt Declined

ONC PCA Radiopharm Not Admin-

ONC PCA Radiopharm-Not Recommended

ONC PCA Radium 223 Stop Date-

ONC PCA Radium 223 Start Date-

ONC PCA Radiopharmaceuticals Start Date-

ONC PCA Radiopharm Other

ONC PCA Immunotherapy-Not Recommended

ONC PCA Immunotherapy Not Admin-

ONC PCA Immunotherapy-Pt Declined

ONC PCA Immunotherapy Other Stop Date-

ONC PCA Immunotherapy Other Start Date-

ONC PCA Immunotherapy-

ONC PCA Sipuleucel-T Stop Date-

ONC PCA Sipuleucel-T Start Date-

ONC PCA Biphosphonate Not Admin-

ONC PCA Biphosphonate-Pt Declined

ONC PCA Biphosphonate-Not Recommended

ONC PCA Denosumab Stop Date-

ONC PCA Denosumab Start Date-

ONC PCA Biphosphonate Other Stop Date-

ONC PCA Biphosphonate Other Start Date-



ONC PCA Biphosphonate Other-  
ONC PCA Pamidronate Stop Date-  
ONC PCA Pamidronate Start Date-  
ONC PCA Zoledronic Acid Stop Date-  
ONC PCA Zoledronic Acid Start Date-  
ONC PCA Steroids Not Administered-  
ONC PCA Steroids-Pt Declined  
ONC PCA Steroids-Not Recommended  
ONC PCA Steroids Other Stop Date-  
ONC PCA Steroids Other Start Date-  
ONC PCA Steroids Other-  
ONC PCA Dexamethasone Stop Date-  
ONC PCA Dexamethasone Start Date-  
ONC PCA Prednisone Stop Date-  
ONC PCA Prednisone Start Date-  
ONC PCA Chemo Not Administered-  
ONC PCA Chemo No-Pt Declined  
ONC PCA Chemo-Not Recommended  
ONC PCA Chemo-No  
ONC PCA Docetaxel Stop Date-  
ONC PCA Docetaxel Start Date-  
ONC PCA Chemo Other Stop Date-  
ONC PCA Chemo Other Start Date-  
ONC PCA Chemo Type-  
ONC PCA Estramustine Start Date-  
ONC PCA Estramustine Stop Date-  
ONC PCA Mitoxantrone Stop Date-  
ONC PCA Mitoxantrone Start Date-  
ONC PCA Cabazitaxel Stop Date-  
ONC PCA Cabazitaxel Start Date-  
ONC PCA Hormone Therapy-Pt Declined  
ONC PCA Hormone Therapy No-Other  
ONC PCA Hormone Therapy-Not Recommended  
ONC PCA Other Therapy Stop Date-  
ONC PCA Other Therapy Start Date-  
ONC PCA Hormone Therapy Other Type-  
ONC PCA Bilateral Orchiectomy  
ONC PCA Estrogen Stop Date-  
ONC PCA Estrogen Start Date-  
ONC PCA GnRH Other Stop Date-  
ONC PCA GnRH Other Start Date-  
ONC PCA GnRH-Other  
ONC PCA Leuprolide Stop Date-  
ONC PCA Leuprolide Start Date-  
ONC PCA Triptorelin Stop Date-  
ONC PCA Triptorelin Start Date-

ONC PCA Buserlin Stop Date-  
ONC PCA Buserlin Start Date-  
ONC PCA Goserelin Stop Date-  
ONC PCA Goserelin Start Date-  
ONC PCA Androgen Synthesis Stop Date-  
ONC PCA Androgen Synthesis Start Date-  
ONC PCA Androgen Synthesis-Other  
ONC PCA Ketoconazole Stop Date-  
ONC PCA Ketoconazole Start Date-  
ONC PCA Abiraterone Stop Date-  
ONC PCA Abiraterone Start Date-  
ONC PCA Flutamide Stop Date-  
ONC PCA Flutamide Start Date-  
ONC PCA Enzalutamide Stop Date-  
ONC PCA Enzalutamide Start Date-  
ONC PCA Bicalutamide Stop Date-  
ONC PCA Bicalutamide Start Date-  
ONC PCA Anti-Androgen Other Stop Date-  
ONC PCA Anti-Androgen Other Start Date-  
ONC PCA Anti Androgen-Other  
ONC PCA Megestrol Stop Date-  
ONC PCA Megestrol Start Date-  
ONC PCA Nilutamide Stop Date-  
ONC PCA Nilutamide Start Date-  
ONC PCA Surgery-Tumor Not Resectable  
ONC PCA Surgery No-Other  
ONC PCA Surgery-Declined  
ONC PCA Surgery-Not Recommended  
ONC PCA Surgery Type-Other  
ONC PCA Nerve Sparing-Unknown  
ONC PCA Surgery-Not Nerve Sparing  
ONC PCA Surgery-Nerve Sparing  
ONC PCA Surgery-Prostatectomy  
ONC PCA Surgery-TURP  
ONC PCA Surgery-Pelvic Lymphadenectomy  
ONC PCA Surgery Lymph Node-No  
ONC PCA Surgery Lymph Node-Yes  
ONC PCA RT Not Administered-  
ONC PCA RT-Patient Declined  
ONC PCA RT-Not Recommended  
ONC PCA RT-No  
ONC PCA RT Other Stop Date-  
ONC PCA RT Other Start Date-  
ONC PCA RT Type Other-  
ONC PCA RT Other  
ONC PCA RT Type-Brachytherapy

ONC PCA External Beam Other Stop Date-  
ONC PCA External Beam Other Start Date-  
ONC PCA RT External Beam Other-  
ONC PCA Conformal Proton RT Stop Date-  
ONC PCA Conformal Proton RT Start Date-  
ONC PCA Modulated RT Stop Date-  
ONC PCA Modulated RT Start Date-  
ONC PCA 3D Conformal Therapy Stop Date-  
ONC PCA 3D Conformal Therapy Start Date-  
ONC PCA Watchful Waiting-No  
ONC PCA Watchful Waiting-Yes  
ONC PCA Active Surveillance-No  
ONC PCA Surveillance-  
ONC PCA Surveillance-Needle Biopsy  
ONC PCA Surveillance-Ultrasounds  
ONC PCA Surveillance-PSA Tests  
ONC PCA Surveillance-Rectal Exams  
ONC PCA Surveillance-Regular Visits  
ONC PCA Treatment Intent Discussed-No  
ONC PCA Treatment Intent Discussed-Yes  
ONC PCA Treatment-Palliative  
ONC PCA Treatment-Curative  
ONC PCA Tumor Board-Case Not Presented  
ONC PCA Tumor Board-Not Available  
ONC PCA Tumor Board-Case Presented  
ONC PCA Radiopharmaceuticals Stop Date-

**CATEGORY:** Prostate Cancer (ONC PCA) Diagnoses

ONC PCA Risk Status-High  
ONC PCA Risk Status-Intermediate  
ONC PCA Risk Status-Low  
ONC PCA Gleason Score Combined-10  
ONC PCA Gleason Score Combined-9  
ONC PCA Gleason Score Combined-8  
ONC PCA Gleason Score Combined-7  
ONC PCA Gleason Score Combined-6  
ONC PCA Gleason Score Combined-5  
ONC PCA Gleason Score Combined-4  
ONC PCA Gleason Score Combined-3  
ONC PCA Gleason Score Combined-2  
ONC PCA Gleason Score Two-5  
ONC PCA Gleason Score Two-4  
ONC PCA Gleason Score Two-3  
ONC PCA Gleason Score Two-2  
ONC PCA Gleason Score Two-1  
ONC PCA Gleason Score One-5

ONC PCA Gleason Score One-4  
ONC PCA Gleason Score One-3  
ONC PCA Gleason Score One-2  
ONC PCA Gleason Score One-1  
ONC PCA Histology-Other:  
ONC PCA Histology-Small Cell  
ONC PCA Histology-Adenocarcinoma  
ONC PCA Pathological-Summary Stage IV  
ONC PCA Pathological-Summary Stage III  
ONC PCA Pathological-Summary Stage IIB  
ONC PCA Pathological-Summary Stage IIA  
ONC PCA Pathological-Summary Stage II  
ONC PCA Pathological-Summary Stage I  
ONC PCA Pathological-Any T,Any N,M1  
ONC PCA Pathological Stage-Any T,N1,M0  
ONC PCA Pathological Stage-T4,N0,M0  
ONC PCA Pathological Stage-T3b,N0,M0  
ONC PCA Pathological Stage-T3a,N0,M0  
ONC PCA Pathological Stage-T3,N0,M0  
ONC PCA Pathological Stage-T2c,N0,M0  
ONC PCA Pathological Stage-T2b,N0,M0  
ONC PCA Pathological Stage-T2a,N0,M0  
ONC PCA Pathological Stage-T2,N0,M0  
ONC PCA Pathological Stage-T1c,N0,M0  
ONC PCA Pathological Stage-T1B,N0,M0  
ONC PCA Pathological Stage-T1A,N0,M0  
ONC PCA Pathological Stage-T1 N0 M0  
ONC PCA Clinical-Summary Stage IV  
ONC PCA Clinical-Summary Stage III  
ONC PCA Clinical-Summary Stage IIB  
ONC PCA Clinical-Summary Stage IIA  
ONC PCA Clinical-Summary Stage II  
ONC PCA Clinical-Summary Stage I  
ONC PCA Clinical Stage-Any T,Any N,M1  
ONC PCA Clinical Stage-Any T,N1,M0  
ONC PCA Clinical Stage-T4,N0,M0  
ONC PCA Clinical Stage-T3b,N0,M0  
ONC PCA Clinical Stage-T3a,N0,M0  
ONC PCA Clinical Stage-T3,N0,M0  
ONC PCA Clinical Stage-T2c,N0,M0  
ONC PCA Clinical Stage-T2b,N0,M0  
ONC PCA Clinical Stage-T2a,N0,M0  
ONC PCA Clinical Stage-T2,N0,M0  
ONC PCA Clinical Stage-T1c,N0,M0  
ONC PCA Clinical Stage-T1b,N0,M0  
ONC PCA Clinical Stage-T1a,N0,M0

ONC PCA Clinical Stage-T1,N0,M0  
ONC PCA Diagnosis Date-  
ONC PCA >12 Positive-Transperineal  
ONC PCA >12 Positive-Transrectal  
ONC PCA >12 Core-Transrectal  
ONC PCA >12 Core-Transperineal  
ONC PCA Biopsy-Transrectal  
ONC PCA Biopsy-Transperineal  
ONC PCA Lab Test-Other:  
ONC PCA ECOG-1  
ONC PCA ECOG-0  
ONC PCA ECOG-2  
ONC PCA ECOG-3  
ONC PCA ECOG-4  
ONC PCA ECOG-5  
ONC PCA Surgery Outcome-Neg Margins  
ONC PCA Surgery Outcome-+Margins  
ONC PCA Surgery Outcome-Other  
ONC PCA Surgery Outcome-Results Pending  
ONC PCA 1 Core-Transperineal  
ONC PCA 2 Core-Transperineal  
ONC PCA 3 Core-Transperineal  
ONC PCA 4 Core-Transperineal  
ONC PCA 5 Core-Transperineal  
ONC PCA 6 Core-Transperineal  
ONC PCA 7 Core-Transperineal  
ONC PCA 8 Core-Transperineal  
ONC PCA 9 Core-Transperineal  
ONC PCA 10 Core-Transperineal  
ONC PCA 11 Core-Transperineal  
ONC PCA 12 Core-Transperineal  
ONC PCA 1 Pos Sample-Transperineal  
ONC PCA 2 Pos Sample-Transperineal  
ONC PCA 3 Pos Sample-Transperineal  
ONC PCA 4 Pos Sample-Transperineal  
ONC PCA 5 Pos Sample-Transperineal  
ONC PCA 6 Pos Sample-Transperineal  
ONC PCA 7 Pos Sample-Transperineal  
ONC PCA 8 Pos Sample-Transperineal  
ONC PCA 9 Pos Sample-Transperineal  
ONC PCA 10 Pos Sample-Transperineal  
ONC PCA 11 Pos Sample-Transperineal  
ONC PCA 12 Pos Sample-Transperineal  
ONC PCA Additional PSA  
ONC PCA 1 Core-Transrectal  
ONC PCA 2 Core-Transrectal

ONC PCA 3 Core-Transrectal  
ONC PCA 4 Core-Transrectal  
ONC PCA 5 Pos Sample-Transrectal  
ONC PCA 6 Core-Transrectal  
ONC PCA 7 Core-Transrectal  
ONC PCA 8 Core-Transrectal  
ONC PCA 9 Core-Transrectal  
ONC PCA 10 Core-Transrectal  
ONC PCA 11 Core-Transrectal  
ONC PCA 12 Core-Transrectal  
ONC PCA 1 Pos Sample-Transrectal  
ONC PCA 2 Pos Sample-Transrectal  
ONC PCA 3 Pos Sample-Transrectal  
ONC PCA 4 Pos Sample-Transrectal  
ONC PCA 5 Core-Transrectal  
ONC PCA 6 Pos Sample-Transrectal  
ONC PCA 7 Pos Sample-Transrectal  
ONC PCA 8 Pos Sample-Transrectal  
ONC PCA 9 Pos Sample-Transrectal  
ONC PCA 10 Pos Sample-Transrectal  
ONC PCA 11 Pos Sample-Transrectal  
ONC PCA 12 Pos Sample-Transrectal  
ONC PCA External Beam Start Date-  
ONC PCA External Beam Stop Date-  
ONC PCA Additional Testosterone

## **Appendix D: VSAS Health Factors**

---

### **VSAS REMINDER DIALOG**

#### **CATEGORY: ONC VSAS VOMITING CAT**

ONC VSAS VOMITING 10  
ONC VSAS VOMITING 9  
ONC VSAS VOMITING 8  
ONC VSAS VOMITING 7  
ONC VSAS VOMITING 6  
ONC VSAS VOMITING 5  
ONC VSAS VOMITING 4  
ONC VSAS VOMITING 3  
ONC VSAS VOMITING 2  
ONC VSAS VOMITING 1  
ONC VSAS VOMITING 0

#### **CATEGORY: ONC VSAS SOB EXERTION CAT**

ONC VSAS SOB EXERTION 10  
ONC VSAS SOB EXERTION 9  
ONC VSAS SOB EXERTION 8  
ONC VSAS SOB EXERTION 7

ONC VSAS SOB EXERTION 6  
ONC VSAS SOB EXERTION 5  
ONC VSAS SOB EXERTION 4  
ONC VSAS SOB EXERTION 3  
ONC VSAS SOB EXERTION 2  
ONC VSAS SOB EXERTION 1  
ONC VSAS SOB EXERTION 0

**CATEGORY: ONC VSAS OTHER CAT**

ONC VSAS OTHER 10  
ONC VSAS OTHER 9  
ONC VSAS OTHER 8  
ONC VSAS OTHER 7  
ONC VSAS OTHER 6  
ONC VSAS OTHER 5  
ONC VSAS OTHER 4  
ONC VSAS OTHER 3  
ONC VSAS OTHER 2  
ONC VSAS OTHER 1  
ONC VSAS OTHER 0  
ONC VSAS OTHER MAIN

**CATEGORY: ONC VSAS DISTRESS CAT**

ONC VSAS DISTRESS 10  
ONC VSAS DISTRESS 9  
ONC VSAS DISTRESS 8  
ONC VSAS DISTRESS 7  
ONC VSAS DISTRESS 6  
ONC VSAS DISTRESS 5  
ONC VSAS DISTRESS 4  
ONC VSAS DISTRESS 3  
ONC VSAS DISTRESS 2  
ONC VSAS DISTRESS 1  
ONC VSAS DISTRESS 0

**CATEGORY: ONC VSAS ANXIETY CAT**

ONC VSAS ANXIETY 10  
ONC VSAS ANXIETY 9  
ONC VSAS ANXIETY 8  
ONC VSAS ANXIETY 7  
ONC VSAS ANXIETY 6  
ONC VSAS ANXIETY 5  
ONC VSAS ANXIETY 4  
ONC VSAS ANXIETY 3  
ONC VSAS ANXIETY 2  
ONC VSAS ANXIETY 1

ONC VSAS ANXIETY 0

**CATEGORY: ONC VSAS DEPRESSION CAT**

ONC VSAS DEPRESSION 10  
ONC VSAS DEPRESSION 9  
ONC VSAS DEPRESSION 8  
ONC VSAS DEPRESSION 7  
ONC VSAS DEPRESSION 6  
ONC VSAS DEPRESSION 5  
ONC VSAS DEPRESSION 4  
ONC VSAS DEPRESSION 3  
ONC VSAS DEPRESSION 2  
ONC VSAS DEPRESSION 1  
ONC VSAS DEPRESSION 0

**CATEGORY: ONC VSAS DROWSINESS CAT**

ONC VSAS DROWSINESS 10  
ONC VSAS DROWSINESS 9  
ONC VSAS DROWSINESS 8  
ONC VSAS DROWSINESS 7  
ONC VSAS DROWSINESS 6  
ONC VSAS DROWSINESS 5  
ONC VSAS DROWSINESS 4  
ONC VSAS DROWSINESS 3  
ONC VSAS DROWSINESS 2  
ONC VSAS DROWSINESS 1  
ONC VSAS DROWSINESS 0

**CATEGORY: ONC VSAS SOB REST CAT**

ONC VSAS SOB REST 10  
ONC VSAS SOB REST 9  
ONC VSAS SOB REST 8  
ONC VSAS SOB REST 7  
ONC VSAS SOB REST 6  
ONC VSAS SOB REST 5  
ONC VSAS SOB REST 4  
ONC VSAS SOB REST 3  
ONC VSAS SOB REST 2  
ONC VSAS SOB REST 1  
ONC VSAS SOB REST 0

**CATEGORY: ONC VSAS CONSTIPATION CAT**

ONC VSAS CONSTIPATION 10  
ONC VSAS CONSTIPATION 9  
ONC VSAS CONSTIPATION 8  
ONC VSAS CONSTIPATION 7



ONC VSAS CONSTIPATION 6  
ONC VSAS CONSTIPATION 5  
ONC VSAS CONSTIPATION 4  
ONC VSAS CONSTIPATION 3  
ONC VSAS CONSTIPATION 2  
ONC VSAS CONSTIPATION 1  
ONC VSAS CONSTIPATION 0

**CATEGORY: ONC VSAS DIARRHEA CAT**

ONC VSAS DIARRHEA 10  
ONC VSAS DIARRHEA 9  
ONC VSAS DIARRHEA 8  
ONC VSAS DIARRHEA 7  
ONC VSAS DIARRHEA 6  
ONC VSAS DIARRHEA 5  
ONC VSAS DIARRHEA 4  
ONC VSAS DIARRHEA 3  
ONC VSAS DIARRHEA 2  
ONC VSAS DIARRHEA 1  
ONC VSAS DIARRHEA 0

**CATEGORY: ONC VSAS NAUSEA CAT**

ONC VSAS NAUSEA 10  
ONC VSAS NAUSEA 9  
ONC VSAS NAUSEA 8  
ONC VSAS NAUSEA 7  
ONC VSAS NAUSEA 6  
ONC VSAS NAUSEA 5  
ONC VSAS NAUSEA 4  
ONC VSAS NAUSEA 3  
ONC VSAS NAUSEA 2  
ONC VSAS NAUSEA 1  
ONC VSAS NAUSEA 0

**CATEGORY: ONC VSAS ANOREXIA CAT**

ONC VSAS ANOREXIA 10  
ONC VSAS ANOREXIA 9  
ONC VSAS ANOREXIA 8  
ONC VSAS ANOREXIA 7  
ONC VSAS ANOREXIA 6  
ONC VSAS ANOREXIA 5  
ONC VSAS ANOREXIA 4  
ONC VSAS ANOREXIA 3  
ONC VSAS ANOREXIA 2  
ONC VSAS ANOREXIA 1  
ONC VSAS ANOREXIA 0

## CATEGORY: ONC VSAS TIREDNESS CAT

ONC VSAS TIREDNESS 10

ONC VSAS TIREDNESS 9

ONC VSAS TIREDNESS 8

ONC VSAS TIREDNESS 7

ONC VSAS TIREDNESS 6

ONC VSAS TIREDNESS 5

ONC VSAS TIREDNESS 4

ONC VSAS TIREDNESS 3

ONC VSAS TIREDNESS 2

ONC VSAS TIREDNESS 1

ONC VSAS TIREDNESS 0

## Acronyms

---

Term	Definition
<b>Branching Terms</b>	A reminder term used to determine Boolean logic for branching/changing content within a reminder dialog window when it opens specific to the patient's chart information
<b>Dialog</b>	A window in CPRS that opens in the format of a form to aid the user in creating text in a note and entering information into the record with a point and click interface
<b>CPRS</b>	Computerized Patient Record System
<b>HIS</b>	Health Informatics Specialist, another title for Clinical Applications Coordinator (CAC) with same responsibilities as a CAC
<b>Health Factor</b>	Informational data marker entered into the record to document patient information that is not readily identifiable with other information data entries in the system
<b>Health Summary (HS)</b>	A clinical package in Vista; GMTS is the package's name spacing
<b>Health Summary Types/Objects</b>	A collection of data that displays to the user specific to the patient's chart they are viewing. Commonly called patient data objects or TIU objects
<b>Health Summary Type</b>	A health summary type is a structure similar to a template, composed of health summary components
<b>Health Summary Object</b>	Health Summary Types saved in a temporary array for insertion into another electronic document
<b>Health Summary Component</b>	Elements of data from VISTA packages that make up the health summary report (e.g., demographics, lab tests, progress notes)
<b>ONC</b>	National Oncology Program Office
<b>KIDS</b>	Kernel Installation Distribution System
<b>Patient Data Object</b>	A collection of data that displays to the user specific to the patient's chart they are viewing. Commonly called health summary objects or TIU objects

<b>PCA</b>	Prostate Cancer
<b>PCS</b>	Patient Care Services
<b>PMAS</b>	Program Management Accountability System
<b>PTM</b>	Patch Tracker Message
<b>PXRM</b>	Clinical Reminder Package namespace
<b>RSD</b>	Requirements Specification Document
<b>Shared Template</b>	Templates within the shared templates tree of CPRS, which the users can access and use while documenting in the chart
<b>Template</b>	Commonly referred to as a dialog. See <b>dialog</b> for definition
<b>TIU</b>	Text Integrated Utility
<b>VA</b>	Department of Veteran Affairs
<b>VHA</b>	Veterans Health Administration
<b>VistA</b>	Veterans Health Information System and Technology Architecture
<b>VSAS</b>	VA SYMPTOM ASSESSMENT SCALE