



**VITALS / MEASUREMENTS
TECHNICAL MANUAL AND
PACKAGE SECURITY GUIDE**

**Version 5.0
October 2002**

Revised September 2009
for GMRV*5.0*23

Department of Veterans Affairs
Office of Information & Technology
Office of Enterprise Development

Revision History

Date	Revision	Description	Author
¹ September 2009	5.0*23	Updated for Patch GMRV*5.0*23: - Functionality list, p. 1-1 - Vitals web link, p. 1-2 - Screen captures, Figs. 1-2, - Virgin installation steps, p. 2-1 - Implementation Considerations, p. 2-3 - Client Requirements, p. 2-4 - Routine list, Ch. 3 - Removed Delphi version number, p. 5-1 - Remote Procedure Call Descriptions, Ch. 5 - Removed archive/purge instructions, Ch. 6 - External Relations removed and replaced with instructions for finding them on FORUM, Ch. 8 - Removed reference to timestamp, p. 9-1 - Added Appendix A: Parameter Settings	A. Bustamante, Paul Long (PM)
September 2008	5.0*22	Updated for Patch GMRV*5.0*22: - Routine Descriptions, p. 5-9 through 5-34	A. Bustamante, Paul Long (PM)
April 2006	5.0*3	Updated for Patch GMRV*5.0*3: - Cover Page - Revision History - Implementation and Maintenance, p. 2-4 - Routine Descriptions, p. 3-1 through 3-8 - Exported Options, p. 5-1 through 5-34 - External Relations, p. 8-47 through 8-96 - Internal Relations, p. 9-1 - Software Product Security, p. 12-1	F. Traxler
October 2002	5.0	Initial Release	M. Gaddie

¹ Patch GMRV*5.0*23 September 2009 Patch 23 release added.

Revision History

This page intentionally left blank for double-side printing.

Table of Contents

1. Introduction.....	1-1
Functionality	1-1
Information on GUI software.....	1-2
2. Implementation and Maintenance.....	2-1
Description.....	2-1
Virgin Installation of Software	2-1
Non-Virgin Installation of Software	2-3
Implementation Considerations	2-3
Resource Requirements	2-4
3. Routine Descriptions.....	3-1
4. File List and Related Information	4-1
File Descriptions	4-1
Package Default Definition.....	4-1
5. Exported Options	5-1
Delphi Components	5-1
Remote Procedure Calls (RPC)	5-1
Menu Option by Name.....	5-35
6. Archiving and Purging	6-1
7. Callable Routines	7-1
8. External Relations.....	8-1
9. Internal Relations.....	9-1
10. Package-wide Variables.....	10-3
11. SAC Exemptions	11-1
12. Software Product Security	12-1
Security Management.....	12-1
Security Features.....	12-1
13. Glossary	13-1
14. Appendix A – Parameter Settings	14-1

This page intentionally left blank for double-side printing.

1. Introduction

The Vitals/Measurements application is designed to store in the patient's electronic medical record all vital signs and various measurements associated with a patient's hospital stay or outpatient clinic visit. Data can be accessed by several VISTA (Veterans Health Information Systems and Technology Architecture) applications (e.g., CPRS, Health Summary) that interface with the Vitals/Measurements application.

Functionality¹

- Contains a GUI (Graphical User Interface) to make editing and viewing of data easier. Additional information on GUI software is contained at the end of this chapter.
- Supports documentation of a patient's vital signs (e.g., temperature, pulse, and respiration).
- Tracks a patient's height, weight, central venous pressure (CVP), circumference/girth and oxygen saturation via oximetry with supplemental oxygen information.
- Supports documentation of detailed or positional blood pressures for a patient (i.e., bilateral blood pressures taken in a sitting, standing and lying position).
- Associates qualifiers (alpha characters appended to the measurement's numeric value) to provide a more detailed description of the patient's vitals/measurements.
- Contains detailed help windows to assist users in associating appropriate qualifiers with the patient vitals/measurements.
- Prints temperature, height, and weight in both metric equivalents and U.S. customary units.
- Prints patient's cumulative measurements on the Vitals Signs Record and the Cumulative Vitals Report.
- Displays latest information on all of the patient's vitals/measurements in both metric equivalents and U.S. customary units (when appropriate) along with the date/time the information was obtained.

¹ Patch GMRV*5.0*23 September 2009 Updated Functionality list, including the removal of support for archive/purge functionality.

- The displays include the patient's intake and output when present in the patient's database (refer to the Intake and Output application).
- Allows facilities to establish hospital-wide high and low values for each vital sign or measurement.
- Identifies abnormal patient values on vitals/measurements reports (those values outside the high and low range).
- Displays graphic reports on workstation monitors.
- Provides APIs so other VistA applications can send or receive patient data.
- Records a reason for the omission of a patient's vitals/measurements.
- Supports an interface to vital signs monitor connected to the workstation.

Information on GUI software

Internet WWW Documentation

Documentation for this product (including user manual, technical manual and package security guide, release notes, and installation guide) is available on the Internet (World Wide Web) from the [VHA Software Document Library \(VDL\)](http://www.va.gov/vdl/) <<http://www.va.gov/vdl/>>:

¹<http://vista.med.va.gov/clinicalspecialties/vitals/index.asp>

GUI and Windows

GUI stands for Graphical User Interface, most frequently seen as the Windows screen. If you have already used programs with these screens, then the Vitals GUI screen will seem familiar to you. The Vitals GUI is only implemented on the Microsoft Windows platform at this time.

If you have little or no familiarity with Windows, you can browse through the Windows help file for information about the basics of using Windows. Also, see the next few paragraphs for brief descriptions of some GUI features.

To access the Windows Help File, click the Start button in the taskbar and click Help. Use this help file as a reference whenever you have general questions about Windows.

The following is an example of what a GUI screen looks like (Fig. 1-1):

¹ Patch GMRV*5.0*23 September 2009 Redirected documentation links to VDL instead of intranet.

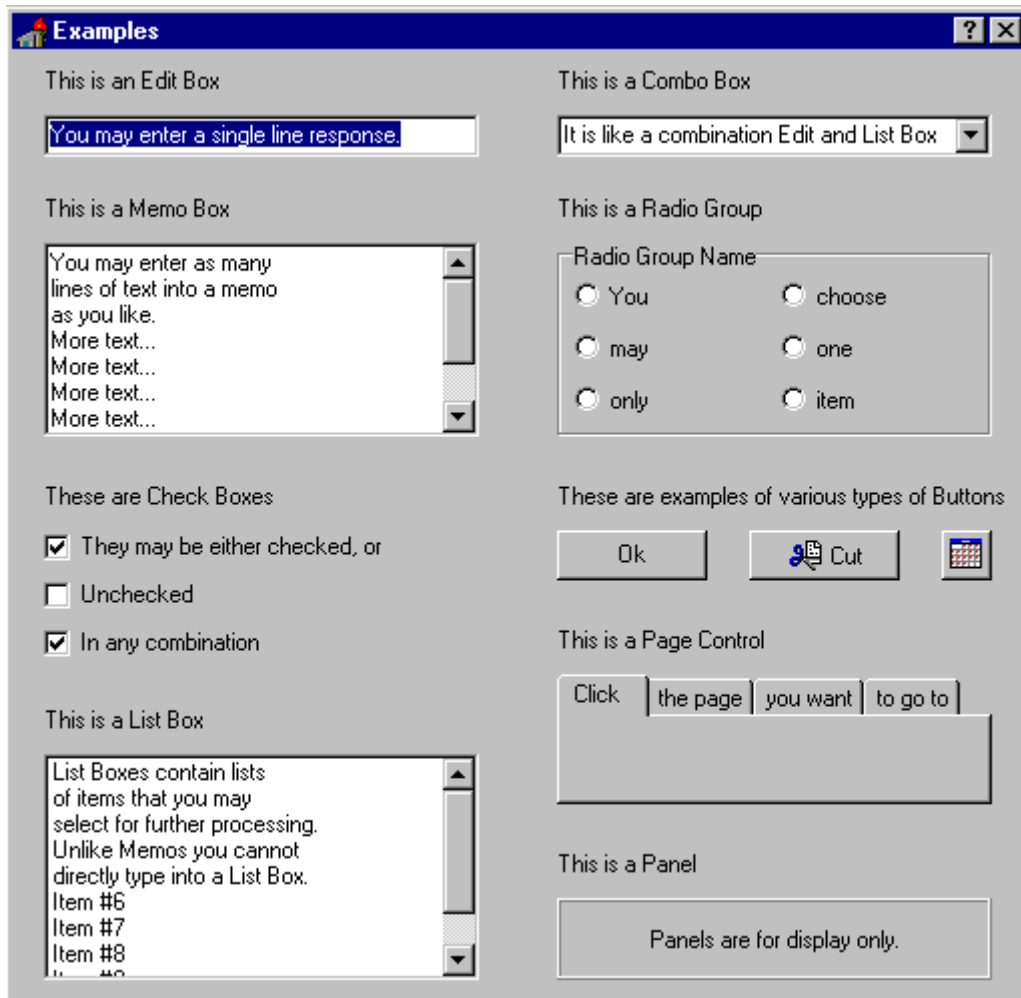


Fig. 1-1

Windows

An “application window” is the area on your computer screen used by a program. If you have more than one program running at the same time, you can go from one program to another by clicking in each application window. The currently active window contains a colored bar (usually blue) at the top of the window. An inactive window contains a gray bar at the top of the window. You can also move, close, or minimize the application window to make room for another window. (See Help in Windows for further instructions on these functions.)

Inactive window

Active window

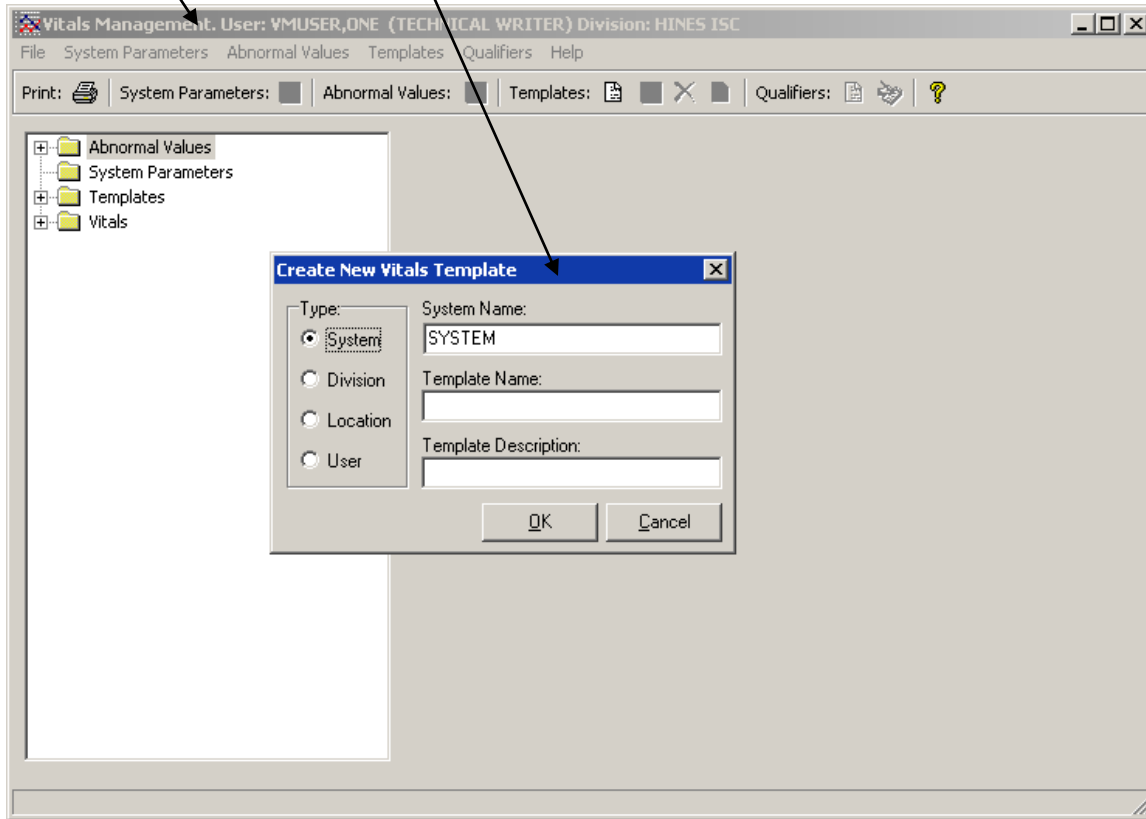


Fig. 1-2¹

Pop-up Windows

These are “mini” windows that pop up within a window to provide or request information. Usually they require some action before they will go away. Clicking on buttons with the words <Cancel>, <Exit>, or something similar closes these windows.

Menus

Menus are shown in the gray bar near the top of the window. Some examples of menus are: File, Edit, Reports, and Help — typical menus for most Windows applications. When you click on one of these, a list of options is displayed.

Help

Online help and documentation are available in several formats: hints, context-sensitive help, menu help, and Internet Web documentation.

¹ Patch GMRV*5.0*23 September 2009 Updated screen capture.

Hints

Place the cursor over a specific button, and a pop-up box will appear containing a short description of that button.

Context-Sensitive Help

Use the “F1” key at any time to obtain help on the current screen.

Menu Help

Select the Help Menu at the top of the screen. A Table of Contents opens. Choose one of the contents, or type in a topic you want help on. A screen appears containing help about that subject.

Access Keys

Use access keys to quickly get to an option through the pull-down menus by holding down the Alt key and pressing the underlined letter of the desired pull-down menu, then (still holding down the Alt key) press the underlined letter of the desired option.

This page intentionally left blank for double-side printing.

2. Implementation and Maintenance

Description

This chapter provides guidelines for implementing the Vitals/Measurements application. It is important to complete all of the steps contained in this chapter before assigning menu options to clinical staff.

Virgin Installation of Software

The following steps should be followed when the Vitals/Measurements software is installed in an environment where no previous installation of the Vitals/Measurements application has taken place.

1. Setting up the software environment.

Information Resource Management Services (IRMS) staff should install the software using the Installation Guide in a test environment prior to installing the software in the production (VAH) account. The following *VISTA* packages should reside in the environment where the Vitals/Measurements application is to be installed:

- a. VA FileMan V. 22 or greater,
- b. Kernel V. 8.0 or greater,
- c. Kernel Toolkit V. 7.3 or greater,
- d. Kernel RPC Broker V. 1.1 or greater,
- e. PIMS V. 5.3 or greater,
- f. Intake and Output V. 4.0,
- g. Health Summary V. 2.7 or greater,
- h. Nursing V. 4.0 or greater.

Data entered into the test environment CANNOT be transferred into the production environment. It is recommended that a limited amount of data be entered into the test directory in order for the user to become familiar with the application and to establish an acceptable training database.

2. Name spacing and file listing.

Vitals/Measurements is found in the GMV namespace. All routines, templates and options begin with GMV. File numbers are in the range of 120.5 to 120.57 and are stored in the ^GMR and ^GMRD globals.

3. Editing site configurable files.

Site configurable files can be edited through the Vitals Manager module.

4. Queuing TaskMan jobs.

No queued TaskMan jobs are associated with this application.

5. ¹Accessing modules.

The Vitals application, i.e., the Vitals and Vitals Manager modules are accessed separately through the GUI executable icons on the user's desktop. The Vitals module is assigned to the clinical staff so they can use the Vitals application, and the Vitals Manager module is assigned to the Clinical Application Coordinator, package coordinator, and Information Resource Management Service (IRMS) staff so they can use the Vitals Manager application to manage the Vitals templates and abnormal values.

6. Assigning modules.

The Vitals Manager module should be assigned to Clinical Application Coordinator, package coordinator, and Information Resource Management Service (IRMS) staff. The Vitals module should be assigned to clinical staff.

7. Security keys.

There is one security key in this application, it is GMV MANAGER. This new key allows a user to view/create/edit all other user's templates in the Vitals Manager module, without this key the user can only view/create/edit his/her own user templates. This key also allows a user to use (run) other user's templates in the Vitals application. This key should be assigned to the package coordinator.

8. Printer issues.

Users may print some reports on Client (Windows) printers and other reports on *VISTA* (device file) printers.

9. On-line Help.

Throughout the application, on-line help is available when questions arise. The user can click on the Help button or menu at the top of the screen to see a table of contents and index containing help on how to enter data, print reports, etc..

¹ Patch GMRV*5.0*23 September 2009 Items 5 and 8 were modified.

Non-Virgin Installation of Software

Follow steps 1 through 9 above when installing the software in an environment where a previous version of the application has been installed.

¹Implementation Considerations

Some sites prefer to delay implementation of the software until they have a point of care data entry system, but this software can be implemented without a point of care system. Vital sign entry can be accomplished by ancillary service personnel, (e.g., PIMS, Dietetics, Pharmacy). Interested users of this software are encouraged to form a committee to work cooperatively on the implementation and training of the package. Setting up test wards is a good way to begin a cooperative implementation effort. The Vitals/Measurements module is appropriate for all personnel who obtain and record patient vitals/measurements. Conceivably this module could be used by nursing, dietetics, medicine, and other disciplines as appropriate.

¹ Patch GMRV*5.0*23 September 2009 Second paragraph removed.

Resource Requirements

The minimal hardware requirements for the software are two data input devices (usually PC workstations running Windows 9x or NT (Ver. 4 or later)) and one printer per location. 12 megabytes of available memory is needed to run the program. The following statistics regarding the disk storage requirements of the software were compiled by an average test site.

Server Requirements

<u>Globals</u>	<u>Type of Data</u>	<u>Size</u>
DDs	Data Dictionaries	40 k
GMR	Patient data for the Text Generator, Vitals/Measurements, Intake and Output, Adverse Reaction Tracking and Consult/Request Tracking Modules	25-75 k/ patient
GMRD	Static data for the Text Generator, Vitals/Measurements and Intake and Output Modules	10 k depending on the global efficiency

¹Client Requirements

The client (disk) storage requirements are approximately:

<u>Type of Data</u>	<u>Size</u>
Vitals.exe	1900 k
VitalsManager.exe	1200 k
GMV_VitalsViewEnter.dll	1500 k
VITALS.HLP	41 k
VITALSMANAGER.HLP	22 k
GMV_VitalsViewEnter.hlp	23 k

¹ Patch GMRV*5.0*23 September 2009 Client Requirements list updated.

3. ¹Routine Descriptions

GMVBMI ;HIOFO/YH,FT-EXTRACT HEIGHT TO CALCULATE BMI FOR WEIGHT;
;;5.0;GEN. MED. REC. - VITALS;**3,23**;;Oct 31, 2002

GMVBP0 ;HIOFO/YH,FT-KYOCERA B/P GRAPH - STORE DATA IN ^TMP(\$J) ;
;;5.0;GEN. MED. REC. - VITALS;;Oct 31, 2002

GMVBP1 ;HIOFO/YH,FT-CALCULATE KYOCERA B/P GRAPH DATA ;
;;5.0;GEN. MED. REC. - VITALS;;Oct 31, 2002

GMVBP2 ;HIOFO/YH,FT-DEFINE KYOCERA BP GRAPH MACRO ;
;;5.0;GEN. MED. REC. - VITALS;;Oct 31, 2002

GMVBP3 ;HIOFO/YH,FT-DEFINE KYOCERA B/P GRAPH MACRO (CONT.) ;
;;5.0;GEN. MED. REC. - VITALS;;Oct 31, 2002

GMVBP4 ;HIOFO/YH,FT-CALL KYOCERA B/P GRAPH MACRO ;
;;5.0;GEN. MED. REC. - VITALS;;Oct 31, 2002

GMVBP5 ;HIOFO/YH,FT-CALCULATE KYOCERA B/P GRAPH DATA (CONT.) ;
;;5.0;GEN. MED. REC. - VITALS;;Oct 31, 2002

GMVCAQU ;HOIFO/YH,FT-DISPLAY CATEGORY/QUALIFIER/SYNONYM TABLE FOR VITAL
TYPE ;
;;5.0;GEN. MED. REC. - VITALS;;Oct 31, 2002

GMVCHAR ;HIOFO/YH,FT-EXTRACT CHARACTERISTIC DATA ;
;;5.0;GEN. MED. REC. - VITALS;;Oct 31, 2002

GMVCLIN ;HOIFO/YH,FT-RETURNS A LIST OF PATIENTS WITH CLINIC APPOINTMENTS
WITHIN A GIVEN PERIOD ;
;;5.0;GEN. MED. REC. - VITALS;**1**;;Oct 31, 2002

GMVDCCCHK ;HOIFO/DAD,FT-VITALS COMPONENT: CHECK DATA VALUE ;
;;5.0;GEN. MED. REC. - VITALS;;Oct 31, 2002

GMVDCCNV ;HOIFO/DAD,FT-VITALS COMPONENT: CONVERT UNITS ;
;;5.0;GEN. MED. REC. - VITALS;;Oct 31, 2002

GMVDCEXT ;HOIFO/DAD,FT-VITALS COMPONENT: EXTRACT PATIENT DATA ;
;;5.0;GEN. MED. REC. - VITALS;**23**;;Oct 31, 2002

GMVDCHLP ;HOIFO/DAD,FT-VITALS COMPONENT: HELP TEXT ;
;;5.0;GEN. MED. REC. - VITALS;;Oct 31, 2002

GMVDCRPC ;HOIFO/DAD-VITALS COMPONENT: RPCs ;
;;5.0;GEN. MED. REC. - VITALS;;Oct 31, 2002

GMVDCSAV ;HOIFO/DAD,FT-VITALS COMPONENT: SAVE DATA ;
;;5.0;GEN. MED. REC. - VITALS;**9,3,23**;;Oct 31, 2002

GMVDCUTL ;HOIFO/DAD,FT-VITALS COMPONENT: UTILITIES ;
;;5.0;GEN. MED. REC. - VITALS;;Oct 31, 2002

GMVDCVAL ;HOIFO/DAD,FT-VITALS COMPONENT: VALIDATE DATA ;
;;5.0;GEN. MED. REC. - VITALS;;Oct 31, 2002

GMVDCVAM ;HOIFO/DAD,FT-VITALS COMPONENT: VALIDATE DATA (CONT.) ;
;;5.0;GEN. MED. REC. - VITALS;;Oct 31, 2002

GMVDS0 ;HIOFO/YH,FT-DISPLAY LATEST VITALS/MEASUREMENTS ;
;;5.0;GEN. MED. REC. - VITALS;**23**;;Oct 31, 2002

GMVDS1 ;HOIFO/YH,FT-CURRENT VITALS BY PATIENT OR LOCATION ;
;;5.0;GEN. MED. REC. - VITALS;**23**;;Oct 31, 2002

GMVDS2 ;HOIFO/RM,YH,FT-VITAL SIGNS DISPLAY ;

¹ September 2009 Patch GMRV*5.0*23 Updated entire list of routines. Vitals routine list as of 5/23/08

Routine Descriptions

;;5.0;GEN. MED. REC. - VITALS;**23**;Oct 31, 2002
GMVER0 ;HOIFO/FT-VITALS ENTERED IN ERROR FOR A PATIENT ;
;;5.0;GEN. MED. REC. - VITALS;**23**;Oct 31, 2002
GMVER1 ;HOIFO/RM,YH,FT-ENTERED IN ERROR FOR A PATIENT & DATE RANGE ;
;;5.0;GEN. MED. REC. - VITALS;;Oct 31, 2002
GMVFSYN ;HOIFO/RM,YH,FT-X REFERENCE FOR VITAL TYPE, CATEGORY AND
SYNONYM ;
;;5.0;GEN. MED. REC. - VITALS;**8**;Oct 31, 2002
GMVFUT0 ;HOIFO/RM,FT-FILE UTILITIES FOR 120.5 FILE ;
;;5.0;GEN. MED. REC. - VITALS;;Oct 31, 2002
GMVFUT2 ;HOIFO/RM,FT-FILE UTILITIES FOR 120.52 FILE ;
;;5.0;GEN. MED. REC. - VITALS;;Oct 31, 2002
GMVFUT3 ;HOIFO/RM,FT-FILE UTILITIES FOR 120.53 FILE ;
;;5.0;GEN. MED. REC. - VITALS;;Oct 31, 2002
GMVGETC ;HOIFO/FT-GET CATEGORY INFORMATION ;
;;5.0;GEN. MED. REC. - VITALS;**23**;Oct 31, 2002
GMVGETD ;HOIFO/YH,FT-EXTRACTS WARD/ROOM-BED/PT AND PT VITALS ;
;;5.0;GEN. MED. REC. - VITALS;**3,22,23**;Oct 31, 2002
GMVGETD1 ;HOIFO/YH-EXTRACT VITALS/MEASUREMENT RECORDS FOR A GIVEN DATE
;
;;5.0;GEN. MED. REC. - VITALS;**23**;Oct 31, 2002
GMVGETD2 ;HOIFO/YH-EXTRACT VITALS/MEASUREMENT RECORDS FOR A GIVEN DATE
(CONT.) ;
;;5.0;GEN. MED. REC. - VITALS;**1,23**;Oct 31, 2002
GMVGETQ ;HOIFO/YH,FT-UTILITIES TO OBTAIN DATE/TIME, HOSPITAL, DUZ, VITAL
CATEGORY AND EDIT V/M ;
;;5.0;GEN. MED. REC. - VITALS;**3**;Oct 31, 2002
GMVGETQL ;HOIFO/FT-GET QUALIFIER INFORMATION ;
;;5.0;GEN. MED. REC. - VITALS;**23**;Oct 31, 2002
GMVGETVT ;HOIFO/FT-GET VITAL TYPE INFORMATION ;
;;5.0;GEN. MED. REC. - VITALS;**23**;Oct 31, 2002
GMVGGR1 ;HOIFO/YH,FT-VITAL SIGNS RECORD SF 511 ;
;;5.0;GEN. MED. REC. - VITALS;**3,23**;Oct 31, 2002
GMVGGR2 ;HOIFO/YH,FT-SET ^TMP(\$J) GLOBAL ;
;;5.0;GEN. MED. REC. - VITALS;**3,23**;Oct 31, 2002
GMVGR0 ;HIOFO/MH,YH,FT-VITALS GRAPH (PART 1) ;
;;5.0;GEN. MED. REC. - VITALS;;Oct 31, 2002
GMVGR1 ;HIOFO/YH,FT-SET ^TMP(\$J) GLOBAL ;
;;5.0;GEN. MED. REC. - VITALS;**1**;Oct 31, 2002
GMVGR2 ;HIOFO/YH,FT-VITALS GRAPH KYOCERA DEFINE MACRO (PART 1) ;
;;5.0;GEN. MED. REC. - VITALS;;Oct 31, 2002
GMVGR3 ;HIOFO/YH,FT-VITALS GRAPH KYOCERA DEFINE MACRO (PART 2) ;
;;5.0;GEN. MED. REC. - VITALS;;Oct 31, 2002
GMVGR4 ;HIOFO/YH,FT-VITALS GRAPH KYOCERA PRINT COMMANDS (PART 1) ;
;;5.0;GEN. MED. REC. - VITALS;;Oct 31, 2002
GMVGR5 ;HIOFO/RM,YH,FT-TMP TO EXTRACT DATA FROM IO PACKAGE ;
;;5.0;GEN. MED. REC. - VITALS;;Oct 31, 2002
GMVGR6 ;HIOFO/YH,FT-VITALS GRAPH KYOCERA PRINT COMMANDS (PART 2) ;
;;5.0;GEN. MED. REC. - VITALS;;Oct 31, 2002

GMVGR7 ;HIOFO/YH,FT-VITALS GRAPH KYOCERA DEFINE MACRO FOR PULSE
 OX./CG/CVP ;
 ;;5.0;GEN. MED. REC. - VITALS;;Oct 31, 2002
 GMVHB0 ;HIOFO/YH,FT-HP LASER B/P GRAPH - DATA ARRAY ;
 ;;5.0;GEN. MED. REC. - VITALS;;Oct 31, 2002
 GMVHB1 ;HIOFO/YH,FT-HP LASER B/P GRAPH - FORM ;
 ;;5.0;GEN. MED. REC. - VITALS;;Oct 31, 2002
 GMVHB2 ;HIOFO/YH,FT-HP LASER B/P GRAPH - BOX DATA ;
 ;;5.0;GEN. MED. REC. - VITALS;;Oct 31, 2002
 GMVHB3 ;HIOFO/YH,FT-HP LASER B/P GRAPH - ID ;
 ;;5.0;GEN. MED. REC. - VITALS;**1**;;Oct 31, 2002
 GMVHB4 ;HIOFO/YH,FT-HP LASER B/P GRAPH - ^TMP DATA ;
 ;;5.0;GEN. MED. REC. - VITALS;;Oct 31, 2002
 GMVHDR ;HIOFO/FT-HEALTH DATA REPOSITORY API ;
 ;;5.0;GEN. MED. REC. - VITALS;**2,17**;;Oct 31, 2002
 GMVHG0 ;HIOFO/YH,FT-HP LASER SF 511 GRAPH - DATA ARRAY ;
 ;;5.0;GEN. MED. REC. - VITALS;;Oct 31, 2002
 GMVHG1 ;HIOFO/YH,FT-HP LASER SF511 GRAPH - FORM ;
 ;;5.0;GEN. MED. REC. - VITALS;;Oct 31, 2002
 GMVHG2 ;HIOFO/YH,FT-HP LASER SF 511 GRAPH - BOX DATA ;
 ;;5.0;GEN. MED. REC. - VITALS;;Oct 31, 2002
 GMVHG3 ;HIOFO/YH,FT-HP LASER SF 511 GRAPH - ID ;
 ;;5.0;GEN. MED. REC. - VITALS;;Oct 31, 2002
 GMVHG4 ;HIOFO/YH,FT-HP LASER SF 511 GRAPH - ^TMP DATA ;
 ;;5.0;GEN. MED. REC. - VITALS;;Oct 31, 2002
 GMVHPN0 ;HIOFO/YH,FT-HP LASER PAIN CHART - DATA ARRAY ;
 ;;5.0;GEN. MED. REC. - VITALS;;Oct 31, 2002
 GMVHPN1 ;HIOFO/YH,FT-HP LASER PAIN CHART - FORM ;
 ;;5.0;GEN. MED. REC. - VITALS;;Oct 31, 2002
 GMVHPN2 ;HIOFO/YH,FT-HP LASER PAIN CHART - ^TMP DATA ;
 ;;5.0;GEN. MED. REC. - VITALS;;Oct 31, 2002
 GMVHPO0 ;HIOFO/YH,FT-HP LASER PULSE OXIMETRY/RESP. GRAPH - DATA ARRAY ;
 ;;5.0;GEN. MED. REC. - VITALS;;Oct 31, 2002
 GMVHPO1 ;HIOFO/YH,FT-HP LASER PULSE OXIMETRY/RESP. GRAPH - FORM ;
 ;;5.0;GEN. MED. REC. - VITALS;;Oct 31, 2002
 GMVHPO2 ;HIOFO/YH,FT-HP LASER PULSE OXIMETRY/RESP. GRAPH - BOX DATA ;
 ;;5.0;GEN. MED. REC. - VITALS;;Oct 31, 2002
 GMVHPO3 ;HIOFO/YH,FT-HP LASER PULSE OXIMETRY/RESP. GRAPH - ^TMP DATA ;
 ;;5.0;GEN. MED. REC. - VITALS;;Oct 31, 2002
 GMVHS ;HIOFO/FT-RETURN PATIENT DATA UTILITY ;
 ;;5.0;GEN. MED. REC. - VITALS;**3,23**;;Oct 31, 2002
 GMVHS1 ;HIOFO/FT-RETURN PATIENT DATA UTILITY (cont.) ;
 ;;5.0;GEN. MED. REC. - VITALS;**3,23**;;Oct 31, 2002
 GMVHW0 ;HIOFO/YH,FT-HP LASER WEIGHT CHART - DATA ARRAY ;
 ;;5.0;GEN. MED. REC. - VITALS;;Oct 31, 2002
 GMVHW1 ;HIOFO/YH,FT-HP LASER WEIGHT CHART - FORM AND GRAPH ;
 ;;5.0;GEN. MED. REC. - VITALS;;Oct 31, 2002
 GMVHW2 ;HIOFO/YH,FT-HP LASER WEIGHT CHART - BOX DATA ;
 ;;5.0;GEN. MED. REC. - VITALS;;Oct 31, 2002
 GMVKPN0 ;HIOFO/YH,FT-KYOCERA PAIN CHART - DATA ARRAY ;

Routine Descriptions

;;5.0;GEN. MED. REC. - VITALS;;Oct 31, 2002
GMVKPN1 ;HCIOFO/YH,FT-KYOCERA PAIN CHART MACRO-1 ;
;;5.0;GEN. MED. REC. - VITALS;;Oct 31, 2002
GMVKPN2 ;HCIOFO/YH,FT-KYOCERA KYOCERA PAIN CHART PRINT COMMANDS (PART
1) ;
;;5.0;GEN. MED. REC. - VITALS;;Oct 31, 2002
GMVKPO0 ;HIOFO/YH,FT-KYOCERA PULSE OXIMETRY/RESP. GRAPH - DATA ARRAY ;
;;5.0;GEN. MED. REC. - VITALS;;Oct 31, 2002
GMVKPO1 ;HIOFO/YH,FT-KYOCERA PULSE OXIMETRY/RESP. GRAPH - GRAPH DATA ;
;;5.0;GEN. MED. REC. - VITALS;;Oct 31, 2002
GMVKPO2 ;HIOFO/YH,FT-KYOCERA PULSE OXIMETRY/RESP. MACRO-1 ;
;;5.0;GEN. MED. REC. - VITALS;;Oct 31, 2002
GMVKPO3 ;HIOFO/YH,FT-KYOCERA PULSE OXIMETRY/RESP. GRAPH - MACRO 2 ;
;;5.0;GEN. MED. REC. - VITALS;;Oct 31, 2002
GMVKPO4 ;HIOFO/YH,FT-GRAPH KYOCERA PRINT COMMANDS (PART 1) ;
;;5.0;GEN. MED. REC. - VITALS;;Oct 31, 2002
GMVLAT0 ;HOIFO/YH,FT-DISPLAY LATEST VITALS/MEASUREMENTS FOR A PATIENT ;
;;5.0;GEN. MED. REC. - VITALS;**1,3,23**;;Oct 31, 2002
GMVLATS ;HOIFO/YH,FT-QUEUES LATEST VITALS/MEASUREMENTS ;
;;5.0;GEN. MED. REC. - VITALS;;Oct 31, 2002
GMVLBP0 ;HIOFO/YH,FT-PATIENT BLOOD PRESSURE LINE PRINTER GRAPH - 1 ;
;;5.0;GEN. MED. REC. - VITALS;;Oct 31, 2002
GMVLBP1 ;HIOFO/YH,FT-SYSTOLIC/DIASTOLIC GRAPH ;
;;5.0;GEN. MED. REC. - VITALS;;Oct 31, 2002
GMVLBP2 ;HIOFO/YH,FT-SET GRAPH LOWER BOX DATA ;
;;5.0;GEN. MED. REC. - VITALS;;Oct 31, 2002
GMVLGQU ;HIOFO/YH,FT-UTILITY FOR LEGEND, PO2 AND QUALIFIER ;
;;5.0;GEN. MED. REC. - VITALS;;Oct 31, 2002
GMVLPO0 ;HIOFO/YH,FT-DOT MATRIX OXIMETRY/RESP. GRAPH - DATA ARRAY ;
;;5.0;GEN. MED. REC. - VITALS;;Oct 31, 2002
GMVLPO1 ;HIOFO/YH,FT-DOT MATRIX PULSE OXIMETRY AND RESPIRATION GRAPH ;
;;5.0;GEN. MED. REC. - VITALS;;Oct 31, 2002
GMVLPO2 ;HIOFO/YH,FT-DOT MATRIX HIOFO/YH-PULSE OX. AND RESPIRATION DATA ;
;;5.0;GEN. MED. REC. - VITALS;;Oct 31, 2002
GMVLWT0 ;HIOFO/YH,FT-DOT MATRIX WEIGHT GRAPH - DATA ARRAY ;
;;5.0;GEN. MED. REC. - VITALS;;Oct 31, 2002
GMVLWT1 ;HIOFO/YH,FT-DOT MATRIX PATIENT WEIGHT GRAPH - 2 ;
;;5.0;GEN. MED. REC. - VITALS;;Oct 31, 2002
GMVLWT2 ;HIOFO/YH,FT-DOT MATRIX WEIGHT GRAPH - 3 ;
;;5.0;GEN. MED. REC. - VITALS;;Oct 31, 2002
GMVLWT3 ;HIOFO/YH,FT-DOT MATRIX PATIENT WEIGHT GRAPH - 4 ;
;;5.0;GEN. MED. REC. - VITALS;;Oct 31, 2002
GMVPAR ;HOIFO/DP - XPARAMeter RPC ;
;;5.0;GEN. MED. REC. - VITALS;**3**;;Oct 31, 2002
GMVPCE3 ;HIOFO/RM,FT-V/M Data Validation for AICS ;
;;5.0;GEN. MED. REC. - VITALS;;Oct 31, 2002
GMVPXRM ;HIOFO/FT-API to return FILE 120.5 data ;
;;5.0;GEN. MED. REC. - VITALS;**6,23**;;Oct 31, 2002
GMVQUAL ;HOIFO/YH,FT-VITAL QUALIFIERS ;
;;5.0;GEN. MED. REC. - VITALS;**8**;;Oct 31, 2002

GMVPRCHL ;HIOFO/FT-RPC FOR HOSPITAL LOCATION SELECTION ;
 ;;5.0;GEN. MED. REC. - VITALS;**3,22**;;Oct 31, 2002

GMVPRPCM ;HOIFO/DP - RPC for Vitals Manager ;
 ;;5.0;GEN. MED. REC. - VITALS;**1,8,13,3**;;Oct 31, 2002

GMVPRPCP ;HOIFO/DP-RPC for GMV_PtSelect.pas ;
 ;;5.0;GEN. MED. REC. - VITALS;**1,3,22**;;Oct 31, 2002

GMVPRPCU ;HOIFO/DP - RPC for Vitals User ;
 ;;5.0;GEN. MED. REC. - VITALS;**3**;;Oct 31, 2002

GMVPSAS0 ;HIOFO/RM,YH,FT-CALCULATE ABNORMAL V/S ;
 ;;5.0;GEN. MED. REC. - VITALS;;Oct 31, 2002

GMVSC0 ;HOIFO/MD,YH,FT-CUMULATIVE VITALS/MEASUREMENTS FOR PATIENT OVER
 GIVEN DATE RANGE ;
 ;;5.0;GEN. MED. REC. - VITALS;**23**;;Oct 31, 2002

GMVSC1 ;HOIFO/YH,FT-CUMULATIVE V/M - CONTINUED ;
 ;;5.0;GEN. MED. REC. - VITALS;**23**;;Oct 31, 2002

GMVSC2 ;HIRMFO/YH,FT-CUMULATIVE V/M - CONTINUED ;
 ;;5.0;GEN. MED. REC. - VITALS;**23**;;Oct 31, 2002

GMVSR0 ;HOIFO/RM,YH,FT-VITAL SIGNS RECORD SF 511 ;
 ;;5.0;GEN. MED. REC. - VITALS;**23**;;Oct 31, 2002

GMVSR1 ;HIOFO/RM,YH-PATIENT VITAL SIGNS-I/O SF 511 GRAPH - 1 ;
 ;;5.0;GEN. MED. REC. - VITALS;;Oct 31, 2002

GMVSR2 ;HIOFO/YH,FT-PATIENT VITAL SIGNS-I/O SF 511 GRAPH - 2 ;
 ;;5.0;GEN. MED. REC. - VITALS;;Oct 31, 2002

GMVUID ;HIOFO/FT-VUID-RELATED UTILITIES ;
 ;;5.0;GEN. MED. REC. - VITALS;**8**;;Oct 31, 2002

GMVUT0 ;HIOFO/RM,YH,FT-INPUT TRANSFORMS FOR VITAL TYPES ;
 ;;5.0;GEN. MED. REC. - VITALS;;Oct 31, 2002

GMVUT2 ;HOIFO/YH,RM,FT-ENTRY TO GATHER PATIENT VITAL/MEASUREMENT DATA ;
 ;;5.0;GEN. MED. REC. - VITALS;;Oct 31, 2002

GMVUT3 ;HIOFO/YH,FT-VITAL MEASUREMENT SITE/QUALIFIER SELECTION ;
 ;;5.0;GEN. MED. REC. - VITALS;;Oct 31, 2002

GMVUTL ;HOIFO/RM,MD,FT-CALLABLE ENTRY POINTS FOR PROGRAMMER UTILITIES ;
 ;;5.0;GEN. MED. REC. - VITALS;**23**;;Oct 31, 2002

GMVUTL1 ;HOIFO/YH,FT-EXTRACT CLINIC LIST AND MARK VITALS ENTERED IN ERROR
 ;
 ;;5.0;GEN. MED. REC. - VITALS;**1,3**;;Oct 31, 2002

GMVUTL2 ;HOIFO/YH,FT-BP HIGH/LOW LIMITS AND DEFAULT QUALIFIER;
 ;;5.0;GEN. MED. REC. - VITALS;;Oct 31, 2002

GMVUTL3 ;HOIFO/YH,FT-RPCBROKER UTILITY ROUTINE TO EXTRACT NURSING
 UNIT/ROOM-BED - 3 ;
 ;;5.0;GEN. MED. REC. - VITALS;**3**;;Oct 31, 2002

GMVUTL7 ;HIOFO/DS,FT-RPC API TO RETURN ALL VITALS/CATEGORIES/QUALIFIERS ;
 ;;5.0;GEN. MED. REC. - VITALS;**3**;;Oct 31, 2002

GMVUTL8 ;HIOFO/DS,FT-RPC API TO RETURN ALL VITALS/CATEGORIES/QUALIFIERS ;
 ;;5.0;GEN. MED. REC. - VITALS;**1,3**;;Oct 31, 2002

GMVVDEF1 ;BPOIFO/JG,HIOFO/FT - BUILD HL7 ORU^R01 MESSAGE FOR VITALS ;
 ;;5.0;GEN. MED. REC. - VITALS;**5,8,12,17,11**;;Oct 31, 2002

GMVVDEFK ;BPOIFO/JG,HIOFO/FT - KIDS POST INSTALL FOR VDEF PATCH ;
 ;;5.0;GEN. MED. REC. - VITALS;**5**;;Oct 31, 2002

GMVVS1 ;HIOFO/YH,FT-PATIENT VITAL SIGNS-I/O SF 511 GRAPH - 1 ;

Routine Descriptions

;;5.0;GEN. MED. REC. - VITALS;;Oct 31, 2002
GMVVS2 ;HIOFO/YH,FT-PATIENT VITAL SIGNS-I/O SF 511 GRAPH - 2 ;
;;5.0;GEN. MED. REC. - VITALS;;Oct 31, 2002
GMVVS3 ;HIOFO/YH,FT-PATIENT VITAL SIGNS-I/O SF 511 GRAPH - 3 ;
;;5.0;GEN. MED. REC. - VITALS;;Oct 31, 2002
GMVVS4 ;HIOFO/YH,FT-PATIENT VITAL SIGNS-GRAPH ;
;;5.0;GEN. MED. REC. - VITALS;;Oct 31, 2002
GMVWT0 ;HIOFO/YH,FT-KYOCERA WEIGHT GRAPH - DATA ARRAY ;
;;5.0;GEN. MED. REC. - VITALS;;Oct 31, 2002
GMVWT1 ;HIOFO/YH,FT-KYOCERA WEIGHT GRAPH - GRAPH DATA ;
;;5.0;GEN. MED. REC. - VITALS;;Oct 31, 2002
GMVWT2 ;HIOFO/YH,FT-KYOCERA WEIGHT GRAPH - MACRO ;
;;5.0;GEN. MED. REC. - VITALS;;Oct 31, 2002
GMVWT3 ;HIOFO/YH,FT-KYOCERA WEIGHT GRAPH - MACRO (CONT.) ;
;;5.0;GEN. MED. REC. - VITALS;;Oct 31, 2002
GMVWT4 ;HIOFO/YH,FT-KYOCERA WEIGHT GRAPH - MACRO CALL ;
;;5.0;GEN. MED. REC. - VITALS;;Oct 31, 2002

4. File List and Related Information

File Descriptions

GMRV VITAL MEASUREMENT 120.5

This file contains vital sign information and other measurement data for a patient.

GMRV VITAL TYPE 120.51

This file contains a list of vital sign types, and various parameters which mold the data entry.

GMRV VITAL QUALIFIER 120.52

This file contains a list of qualifiers for vitals/measurements.

GMRV VITAL CATEGORY 120.53

This file contains a list of qualities or characteristics that can be affixed to a vital measurement.

GMRV VITALS PARAMETERS 120.57

This file contains the various site configurable parameters for the Vitals/Measurements application.

Package Default Definition

FILE #	NAME	UP DATE DD	SEND SEC. CODE	DATA COMES W/FILE	SITE DATA	RSLV PTS	USER OVER RIDE
120.5	GMRV VITAL MEASUREMENT	YES	YES	NO			
120.51	GMRV VITAL TYPE	YES	YES	YES	ADD	NO	NO
120.52	GMRV VITAL QUALIFIER	YES	YES	YES	ADD	NO	YES
120.53	GMRV VITAL CATEGORY	YES	YES	YES	ADD	NO	NO
120.57	GMRV VITALS PARAMETERS	YES	YES	YES	ADD	NO	YES

This page intentionally left blank for double-side printing.

5. Exported Options

Delphi Components

¹Vitals/Measurements uses RPC Broker and VA FileMan Delphi Components in the display and navigation of screens. Vitals utilizes only the standard components as supplied with Delphi. Below is a list of the Delphi components this application currently uses along with a short description.

TeeChart	Displays charts and graphs. It is used in Vitals/Measurements to graphically plot various measurements versus time.
ResizerPanel	Resizes its client components when the form is resized or the screen resolution is changed. This takes care of proper size and position of components with regard to the font size used in Windows. It is there so users can resize the application Windows to meet their needs.
VersionInfoResource	Retrieves VERSIONINFO data from the executable. It is used in the about boxes in Vitals/Measurements to display version information.
RPCBroker	Used for all non-FTP communication with the server.
FMDC	Used for saving, deleting, validating, and retrieving data in FileMan data dictionaries.
DateTime	Allows the user to visually select a date and time. It is provided as an option on all date/time fields.
PatientSelectionFrame	Allows user to select a patient, by unit, team, ward, clinic or name. The frame is on a resize panel.
ReportFrame	Allows users to view patients vitals data and create a configurable graph of data.

Remote Procedure Calls (RPC)

```
NAME: GMV ADD VM                                TAG: EN1
  ROUTINE: GMVDCSAV                               RETURN VALUE TYPE: SINGLE VALUE
  AVAILABILITY: SUBSCRIPTION                       INACTIVE: ACTIVE
  WORD WRAP ON: TRUE
  DESCRIPTION:
  This remote procedure call is used to enter a new Vital/Measurement record
  in the GMRV Vital Measurement file (#120.5).
```

¹ Patch GMRV*5.0*23 September 2009 Deleted Delphi version number.

Exported Options

¹This remote procedure call is documented in Integration Agreement 3996.

```
INPUT PARAMETER: GMRVDATA          PARAMETER TYPE: LITERAL
  MAXIMUM DATA LENGTH: 255        REQUIRED: YES
  SEQUENCE NUMBER: 1
DESCRIPTION:
This variable contains the data needed to create a Vital/Measurement
record in the GMRV Vital Measurement (#120.5) file. The values are parsed
out of the GMRVDATA variable and filed.
```

GMRVDATA has the following data:
piece1^piece2^piece3^piece4^piece5

where:

```
piece1 = date/time in FileMan internal format
piece2 = patient number from FILE 2 (i.e., DFN)
piece3 = vital type, a semi-colon, the reading, a semi-colon, and
        oxygen flow rate and percentage values [optional] (e.g.,
        21;99;1 l/min 90%)
piece4 = hospital location (FILE 44) pointer value
piece5 = user number from FILE 200 (i.e., DUZ), an asterisk, and the
        qualifier (File 120.52) internal entry numbers separated by
        colons (e.g., 547*50:65)
```

RETURN PARAMETER DESCRIPTION:
RESULT does not return a value.

The data is filed in the GMRV VITAL MEASUREMENT (#120.5) file.

Example:

```
> S GMRVDATA="3051011.1635^134^1;120/80;^67^87*2:38:50:75"
> D EN1^GMVDCSAV(.RESULT,GMRVDATA)
```

```
NAME: GMV ALLERGY          TAG: ALLERGY
  ROUTINE: GMVUTL3          RETURN VALUE TYPE: ARRAY
  AVAILABILITY: SUBSCRIPTION  INACTIVE: ACTIVE
  WORD WRAP ON: TRUE
DESCRIPTION:
This remote procedure call retrieves the patient's allergy information.
```

This remote procedure call is documented in Integration Agreement 4350.

```
INPUT PARAMETER: DFN          PARAMETER TYPE: LITERAL
  MAXIMUM DATA LENGTH: 30    REQUIRED: YES
  SEQUENCE NUMBER: 1
DESCRIPTION:
DFN is a pointer to the PATIENT file (#2).
RETURN PARAMETER DESCRIPTION:
Returns the patient allergy information in the array specified.
```

The result array returns:

```
RESULT(n)=This patient has the following allergy(ies):
(n+1)=piece1
```

```
where piece1 = the allergy name
      n = sequential number starting at 1.
```

If there is no data, then the following is returned:
RESULT(1)=No Allergy Assessment

¹ April 2006 Patch GMRV*5.0*3 Updated the routine description.

Example:

```
> S DFN=134
> D ALLERGY^GMVUTL3(.RESULT,DFN) ZW RESULT
> RESULT(1)="This patient has the following allergy(ies): "
> RESULT(2)="PENICILLIN"
```

```
NAME: GMV CHECK DEVICE TAG: CHKDEV
ROUTINE: GMVUTL2 RETURN VALUE TYPE: ARRAY
AVAILABILITY: RESTRICTED INACTIVE: ACTIVE
WORD WRAP ON: TRUE
1DESCRIPTION:
This RPC calls a KERNEL utility to return a list of printers the user may
select to print output. Returns a maximum of twenty entries.
INPUT PARAMETER: GMVIEN PARAMETER TYPE: LITERAL
REQUIRED: YES SEQUENCE NUMBER: 1
DESCRIPTION:
The value to begin the search in the Device file (#3.5). Can be null.
INPUT PARAMETER: GMVDIR PARAMETER TYPE: LITERAL
MAXIMUM DATA LENGTH: 1 REQUIRED: YES
SEQUENCE NUMBER: 2
DESCRIPTION:
Direction of the search (1 = forward, -1 = backwards).
If DIR is null, then set to 1.
INPUT PARAMETER: GMVRMAR PARAMETER TYPE: LITERAL
REQUIRED: YES SEQUENCE NUMBER: 3
DESCRIPTION:
Right margin as a single number or range (e.g, 80, 132 or "80-132").
RETURN PARAMETER DESCRIPTION:
RESULT(n)=P1^P2^P3^P4^P5^P6

where n = a sequential number starting with 1
P1 = File 3.5 IEN
P2 = File 3.5 name (.01 value)
P3 = File 3.5 name (.01 value) or flag to indicate last entry in
the array
P4 = location of terminal
P5 = right margin
P6 = page length
```

```
NAME: GMV CLINIC PT TAG: CLINPTS
ROUTINE: GMVCLIN RETURN VALUE TYPE: ARRAY
AVAILABILITY: RESTRICTED INACTIVE: ACTIVE
WORD WRAP ON: TRUE
DESCRIPTION:
This procedure lists patients who have an appointment for a selected
clinic and a given period of time.
INPUT PARAMETER: CLIN PARAMETER TYPE: LITERAL
MAXIMUM DATA LENGTH: 30 REQUIRED: YES
SEQUENCE NUMBER: 1
DESCRIPTION:
CLIN contains the name of the selected clinic from the Hospital Location
file (#44).
INPUT PARAMETER: BDATE PARAMETER TYPE: LITERAL
MAXIMUM DATA LENGTH: 30 REQUIRED: YES
SEQUENCE NUMBER: 2
DESCRIPTION:
BDATE contains TODAY, TOMORROW, YESTERDAY, PAST WEEK or PAST MONTH.
```

¹ April 2006 Patch GMRV*5.0*3 Updated the routine description.

Exported Options

RETURN PARAMETER DESCRIPTION:

Returns a list of patient names and DFNs for the selected clinic and the given date span in the array specified.

¹NAME: **GMV CLOSEST READING** TAG: CLOSEST
ROUTINE: GMVGETD RETURN VALUE TYPE: SINGLE VALUE
AVAILABILITY: RESTRICTED INACTIVE: ACTIVE
DESCRIPTION:
This remote procedure call returns the observation date/time and reading of the record closest to the date/time specified for the patient and vital type.
INPUT PARAMETER: GMVDFN PARAMETER TYPE: LITERAL
MAXIMUM DATA LENGTH: 12 REQUIRED: YES
SEQUENCE NUMBER: 1
DESCRIPTION:
A pointer to the Patient (#2) file (i.e., DFN).
INPUT PARAMETER: GMVDT PARAMETER TYPE: LITERAL
MAXIMUM DATA LENGTH: 14 REQUIRED: NO
SEQUENCE NUMBER: 2
DESCRIPTION:
The date/time to search from. The default is NOW.
INPUT PARAMETER: GMVVT PARAMETER TYPE: LITERAL
MAXIMUM DATA LENGTH: 5 REQUIRED: YES
SEQUENCE NUMBER: 3
DESCRIPTION:
The vital type abbreviation as it appears in FILE 120.51, Field 1 (e.g., WT).
INPUT PARAMETER: GMVFLAG PARAMETER TYPE: LITERAL
MAXIMUM DATA LENGTH: 1 REQUIRED: NO
SEQUENCE NUMBER: 4
DESCRIPTION:
A flag to indicate if the search should look before or after the date/time specified in the GMVDT value where 1 indicates before, 2 indicates after and 0 indicates either direction.
RETURN PARAMETER DESCRIPTION:
Returns a string composed of two pieces. The first piece contains the observation date/time (FILE 120.5, Field .01) of the record that was found. The second piece contains the rate (FILE 120.5, Field 1.2) of the record. If there is an error, the first piece will be -1 and the second piece will be the error text.

Example:

```
> S GMVDFN=134,GMVDT=3090225.08,GMVT="WT",GMVFLAG=0  
> D CLOSEST(.TEST,GMVDFN,GMVDT,GMVT,GMVFLAG) ZW TEST  
> TEST="3081106.142926^135"
```

NAME: **GMV CONVERT DATE** TAG: GETDT
ROUTINE: GMVGETQ RETURN VALUE TYPE: SINGLE VALUE
AVAILABILITY: SUBSCRIPTION INACTIVE: ACTIVE
WORD WRAP ON: TRUE
²DESCRIPTION:
This remote procedure call converts a user-supplied date/time into VA FileMan's internal and external date format.

This remote procedure call is documented in Integration Agreement 4353.

INPUT PARAMETER: GMRDATE PARAMETER TYPE: LITERAL

¹ September 2009 Patch GMRV*5.0*23 Added new routine and description.

² April 2006 Patch GMRV*5.0*3 Updated the routine description.

MAXIMUM DATA LENGTH: 30 REQUIRED: YES
 SEQUENCE NUMBER: 1
 DESCRIPTION:
 GMRDATE is the user-supplied date/time text.
 RETURN PARAMETER DESCRIPTION:
 RESULT=Date in internal FileMan format^Date in external FileMan format

Example:

```
> S GMRDATE="10/11/2005@10:30AM"
> D GETDT^GMVGETQ(.RESULT,GMRDATE) ZW RESULT
> RESULT="3051011.103^OCT 11, 2005@10:30:00"
```

NAME: **GMV CUMULATIVE REPORT** TAG: EN1
 ROUTINE: GMVSCO RETURN VALUE TYPE: SINGLE VALUE
 AVAILABILITY: RESTRICTED INACTIVE: ACTIVE
 DESCRIPTION:
 Prints the Cumulative Vitals Report.
 INPUT PARAMETER: GMVDATA PARAMETER TYPE: LITERAL
 MAXIMUM DATA LENGTH: 150 REQUIRED: YES
 SEQUENCE NUMBER: 1
 DESCRIPTION:
 A multi-piece variable that identifies the values needed to run the report.

Piece 1: DFN
 2: Start date/time of the report range (FileMan format)
 3: End date/time of the report range (FileMan format)
 4: n/a
 5: Device name (File 3.5, Field .01)
 6: Device internal entry number
 7: date/time to print the report (FileMan format)
 8: ward internal entry number (File 42)
 9: hospital location internal entry number (File 44)
 10: list of rooms separated by a comma (e.g., 200,210,220)

RETURN PARAMETER DESCRIPTION:
 Returns a message stating the outcome of the request to queue the report.
 If the report was successfully queued, RESULT will be "Report sent to device. Task #: " ZTSK" where ZTSK is the task number of the job. If the report could not be queued, RESULT will be "Unable to task the report."

¹NAME: **GMV DLL VERSION** TAG: DLL
 ROUTINE: GMVUTL8 RETURN VALUE TYPE: SINGLE VALUE
 AVAILABILITY: SUBSCRIPTION INACTIVE: ACTIVE
 DESCRIPTION:
 Returns a YES or NO response to indicate if the Dynamic Link Library (DLL) file should be used.

This remote procedure call is documented in Integration Agreement 4420.
 INPUT PARAMETER: GMVX PARAMETER TYPE: LITERAL
 MAXIMUM DATA LENGTH: 50 REQUIRED: YES
 SEQUENCE NUMBER: 1
 DESCRIPTION:
 This value is the name of the file and the date/time associated with it (e.g., GMV_VITALSVIEWENTER.DLL:v. 07/21/05 10:34).
 RETURN PARAMETER DESCRIPTION:
 Returns YES if the file can be used. Returns NO, if the file cannot be used. Returns null if the file was not found.

¹ April 2006 Patch GMRV*5.0*3 Added new routine and description.

Exported Options

Example:

```
> S GMVX="GMV_VITALSVIEWENTER.DLL:v. 07/21/05 10:34"  
> D DLL^GMVUTL8(.RESULT,GMVX) ZW RESULT  
> RESULT="NO"
```

NAME: **GMV ENTERED IN ERROR-PATIENT** TAG: EN1
ROUTINE: GMVER0 RETURN VALUE TYPE: SINGLE VALUE
AVAILABILITY: RESTRICTED INACTIVE: ACTIVE
DESCRIPTION:
Prints a report of all vitals/measurements entered in error for the selected patient for a given date/time range.
INPUT PARAMETER: GMVDATA PARAMETER TYPE: LITERAL
MAXIMUM DATA LENGTH: 150 REQUIRED: YES
SEQUENCE NUMBER: 1
DESCRIPTION:
A multi-piece variable that identifies the values needed to run the report.

Piece 1: DFN
2: Start date/time of the report range (FileMan format)
3: End date/time of the report range (FileMan format)
4: n/a
5: Device name (File 3.5, Field .01)
6: Device internal entry number
7: date/time to print the report (FileMan format)
8: n/a
9: n/a
10: n/a

RETURN PARAMETER DESCRIPTION:
Returns a message stating the outcome of the request to queue the report. If the report was successfully queued, RESULT will be "Report sent to device. Task #: " ZTSK" where ZTSK is the task number of the job. If the report could not be queued, RESULT will be "Unable to task the report."

NAME: **GMV EXTRACT REC** TAG: GETVM
ROUTINE: GMVGETD RETURN VALUE TYPE: GLOBAL ARRAY
AVAILABILITY: SUBSCRIPTION INACTIVE: ACTIVE
WORD WRAP ON: TRUE
¹DESCRIPTION:
This remote procedure call retrieves vital records from the GMRV Vital Measurement (#120.5) file for a selected patient within a given date span.

This remote procedure call is documented in Integration Agreement 4416.
INPUT PARAMETER: GMRVDATA PARAMETER TYPE: LITERAL
MAXIMUM DATA LENGTH: 30 REQUIRED: YES
SEQUENCE NUMBER: 1

DESCRIPTION:
GMRVDATA consists of 4 pieces of information:
piece1^piece2^piece3^piece4

where piece1 = Patient (#2) file pointer (i.e., DFN)
piece2 = End date of search (FileMan internal format)
piece3 = single vital type abbreviation (File 120.51, Field 1)
[optional] If not defined, the default is
"T;P;R;BP;HT;WT;PN;PO2;CG;CVP"
piece4 = Start date of search (FileMan internal format)

RETURN PARAMETER DESCRIPTION:
Returns the name of the global array (i.e., ^TMP(\$J,"GRPC")) containing a

¹ April 2006 Patch GMRV*5.0*3 Updated the routine description.

list of vital records for the selected patient within the defined date range.

The TMP global contains:

```
^TMP($J,"GRPC",n)=piece1^piece2
```

where piece1 = File 120.5 IEN

piece2 = a string of text in the following format:

Date/time taken (external) Vital Type Abbreviation:

Rate U.S. units (Metric value) (Qualifiers)

n = sequential number starting at 1.

Example:

```
> S GMRVDATA="134^3051028^BP^3051001"
```

```
> D GETVM^GMVGETD(.RESULT,GMRVDATA) ZW RESULT
```

```
> RESULT="^TMP(538999278,"GRPC")"
```

```
> D ^%G
```

```
> Global ^TMP($J,"GRPC")
```

```
> ^TMP(538999278,"GRPC",1)=8858^10/11/05@16:35 B/P: 120/80* (L ARM,
```

```
SITTING, CAROTID, CALF) _VITPROVIDER,ONE
```

```
> 2)=8961^10/20/05@14:47 B/P: 128/81* (L ARM,
```

```
SITTING, PALPATED) _VITPROVIDER,TWO
```

If there is no data, then the following is returned:

```
^TMP($J,"GRPC",1)=0^NO VITALS/MEASUREMENTS ENTERED WITHIN THIS PERIOD
```

¹NAME: **GMV GET CATEGORY IEN** TAG: CATEGORY
 ROUTINE: GMVUTL8 RETURN VALUE TYPE: SINGLE VALUE
 AVAILABILITY: SUBSCRIPTION INACTIVE: ACTIVE
 DESCRIPTION:
 Returns the IEN if the value is found in the GMRV VITAL CATEGORY (#120.53) file.

This remote procedure call is documented in Integration Agreement 4354.
 INPUT PARAMETER: GMVCAT PARAMETER TYPE: LITERAL
 MAXIMUM DATA LENGTH: 45 REQUIRED: YES
 SEQUENCE NUMBER: 1
 DESCRIPTION:
 GMVCAT = Name of Category (from FILE 120.53) (e.g., METHOD)
 RETURN PARAMETER DESCRIPTION:
 Returns the IEN if GMVCAT exists in FILE 120.53

Example:

```
> S GMVCAT="METHOD"
```

```
> D CATEGORY^GMVUTL8(.RESULT,GMVCAT) ZW RESULT
```

```
> RESULT=2
```

NAME: **GMV GET CURRENT TIME** TAG: TIME
 ROUTINE: GMVUTL7 RETURN VALUE TYPE: SINGLE VALUE
 AVAILABILITY: SUBSCRIPTION INACTIVE: ACTIVE
 WORD WRAP ON: FALSE

²DESCRIPTION:

Gets the current date and time from the server.

This remote procedure call is documented in Integration Agreement 4355.

¹ April 2006 Patch GMRV*5.0*3 Added new routine and description.

² April 2006 Patch GMRV*5.0*3 Updated the routine description.

Exported Options

RETURN PARAMETER DESCRIPTION:

Returns current date and time in FileMan internal and external format.

Example:

```
> D TIME^GMVUTL7(.RESULT) ZW RESULT
> RESULT=3051011.143332
```

Note: There is an input parameter, P2, listed in the TIME line tag of the GMVUTL7 routine. However, it is not used. It can be set to any value or omitted. It remains for backwards compatibility.

¹NAME: **GMV GET VITAL TYPE IEN** TAG: TYPE
ROUTINE: GMVUTL8 RETURN VALUE TYPE: SINGLE VALUE
AVAILABILITY: SUBSCRIPTION INACTIVE: ACTIVE
DESCRIPTION:
Returns the IEN if the value is found in the GMRV VITAL TYPE (#120.51) file.

This remote procedure call is documented in Integration Agreement 4357.
INPUT PARAMETER: GMVTYPE PARAMETER TYPE: LITERAL
MAXIMUM DATA LENGTH: 55 REQUIRED: YES
SEQUENCE NUMBER: 1
DESCRIPTION:
GMVTYPE = Name of Vital Type (from FILE 120.51) (e.g., WEIGHT)
RETURN PARAMETER DESCRIPTION:
Returns the IEN if GMVTYPE exists in FILE 120.51.

Example:

```
> S GMVTYPE="WEIGHT"
> D TYPE^GMVUTL8(.RESULT,GMVTYPE) ZW RESULT
> RESULT=9
```

NAME: **GMV LATEST VITALS BY LOCATION** TAG: EN1
ROUTINE: GMVDS1 RETURN VALUE TYPE: SINGLE VALUE
AVAILABILITY: RESTRICTED INACTIVE: ACTIVE
DESCRIPTION:
Prints the latest vitals/measurements for all patients on a given ward location.
INPUT PARAMETER: GMVDATA PARAMETER TYPE: LITERAL
MAXIMUM DATA LENGTH: 150 REQUIRED: YES
SEQUENCE NUMBER: 1
DESCRIPTION:
A multi-piece variable that identifies the values needed to run the report.

Piece 1: n/a
2: n/a
3: n/a
4: n/a
5: Device name (File 3.5, Field .01)
6: Device internal entry number
7: date/time to print the report (FileMan format)
8: ward internal entry number (File 42)
9: hospital location internal entry number (File 44)
10: n/a

RETURN PARAMETER DESCRIPTION:

Returns a message stating the outcome of the request to queue the report. If the report was successfully queued, RESULT will be "Report sent to

¹ April 2006 Patch GMRV*5.0*3 Added new routine and description.

device. Task #: " ZTSK" where ZTSK is the task number of the job. If the report could not be queued, RESULT will be "Unable to task the report."

NAME: **GMV LATEST VITALS FOR PATIENT** TAG: EN1
 ROUTINE: GMVDS1 RETURN VALUE TYPE: SINGLE VALUE
 AVAILABILITY: RESTRICTED INACTIVE: ACTIVE
 DESCRIPTION:
 Prints the latest vitals/measurements for the selected patient.
 INPUT PARAMETER: GMVDATA PARAMETER TYPE: LITERAL
 MAXIMUM DATA LENGTH: 150 REQUIRED: YES
 SEQUENCE NUMBER: 1
 DESCRIPTION:
 A multi-piece variable that identifies the values needed to run the report.

Piece 1: DFN
 2: n/a
 3: n/a
 4: n/a
 5: Device name (File 3.5, Field .01)
 6: Device internal entry number
 7: date/time to print the report (FileMan format)
 8: n/a
 9: n/a
 10: n/a

RETURN PARAMETER DESCRIPTION:
 Returns a message stating the outcome of the request to queue the report. If the report was successfully queued, RESULT will be "Report sent to device. Task #: " ZTSK" where ZTSK is the task number of the job. If the report could not be queued, RESULT will be "Unable to task the report."

¹NAME: **GMV LATEST VM** TAG: GETLAT
 ROUTINE: GMVGETD RETURN VALUE TYPE: GLOBAL ARRAY
 AVAILABILITY: SUBSCRIPTION INACTIVE: ACTIVE
 WORD WRAP ON: TRUE
 DESCRIPTION:
 This remote procedure call retrieves the latest vital records for a given patient.

This remote procedure call is documented in Integration Agreement 4358.

INPUT PARAMETER: GMRDFN PARAMETER TYPE: LITERAL
 MAXIMUM DATA LENGTH: 10 REQUIRED: YES
 SEQUENCE NUMBER: 1
 DESCRIPTION:
 GMRDFN variable is a pointer to the Patient (#2) file (i.e., DFN).
 RETURN PARAMETER DESCRIPTION:
 Returns the name of the global array (i.e., ^TMP(\$J,"GRPC")) containing the latest vitals for the selected patient.

The TMP global contains:
 ^TMP(\$J,"GRPC",n)=piecel
 where piecel = is a formatted line of text.
 n = sequential number starting at 1.

The formatted line of text includes the vital type, value and unit (U.S.), value and unit (metric), qualifiers, supplemental oxygen, body mass index value, person who entered the record and the database where the record is stored.

¹ Patch GMRV*5.0*23 September 2009 Updated routine description.

Exported Options

If there is no data for the patient, the following is returned:

```
^TMP($J,"GRPC",1)=There are no results to report
```

Example:

```
> S GMRDFN=134
> D GETLAT^GMVGETD(.RESULT,GMRDFN) ZW RESULT
> RESULT="^TMP(539349605,"GRPC")"
> D ^%G
> Global ^TMP($J,"GRPC"
> ^TMP(539349605,"GRPC",1)=Temp.: (08/09/05@08:00) 102 F (38.9 C)*
(ORAL) _VITPROVIDER,ONE_Vitals
> 2)=Pulse: (07/14/05@16:33) 55
(LEFT,CAROTID,PALPATED,LYING) _VITPROVIDER,ONE_Vitals
```

Enter RETURN to continue or '^' to exit:

```
> 3)=Resp.: (07/14/05@16:33) 31
(SPONTANEOUS,SITTING) _VITPROVIDER,ONE_Vitals
> 4)=Pulse Ox: (08/22/05@13:48) 99% with
supplemental O2 1 L/min 90% NASAL CANNULA _VITPROVIDER,ONE_Vitals
> 5)=B/P: (09/26/05@11:30) 120/80* (L
ARM,SITTING,CAROTID,CALF) _VITPROVIDER,TWO_Vitals
> 6)=Ht.: (09/14/05@17:18) 5 ft 6 in (167.64
cm) (ACTUAL) _VITPROVIDER,ONE_Vitals
> 7)=Wt.: (09/14/05@17:18) 135 lb (61.36 kg)
(ACTUAL,STANDING) _VITPROVIDER,ONE_Vitals
> 8)=Body Mass Index: 22
9)=CVP: (08/22/05@17:09) 15 cmH2O (11.0
mmHg) _VITPROVIDER,ONE_Vitals
10)=Circ/Girth: (07/22/05@10:22) 1 in (2.54 cm)
(DRY,ABDO MINAL) _VITPROVIDER,TWO_Vitals
11)=Pain: (09/15/05@16:43) 5
_VITPROVIDER,ONE_Vitals
```

```
1NAME: GMV LOCATION SELECT TAG: RPC
ROUTINE: GMVRPCHL RETURN VALUE TYPE: GLOBAL ARRAY
AVAILABILITY: SUBSCRIPTION INACTIVE: ACTIVE
WORD WRAP ON: TRUE
```

²DESCRIPTION:

Select a hospital location by name, from a patient appointment or from a patient admission. Can also generate a list of active clinics.

This remote procedure is documented in Integration Agreement 4461.

```
INPUT PARAMETER: OPTION PARAMETER TYPE: LITERAL
MAXIMUM DATA LENGTH: 10 REQUIRED: YES
SEQUENCE NUMBER: 1
```

DESCRIPTION:

Routine tag line in GMVRPCHL to call.

```
INPUT PARAMETER: DATA PARAMETER TYPE: LITERAL
MAXIMUM DATA LENGTH: 100 REQUIRED: YES
SEQUENCE NUMBER: 2
```

DESCRIPTION:

Other data as required for the call.

RETURN PARAMETER DESCRIPTION:

This remote procedure call allows the user to select a hospital location.

The entry point is RPC^GMVRPCHL. It has input parameters of RESULTS,

¹ April 2006 Patch GMRV*5.0*3 Added new routine and description.

² June 2008 Patch GMRV*5.0*22 Updated routine description.

OPTION and DATA (ex. RPC^GMVRPCHL(.RESULTS,OPTION,DATA)).

The RESULTS variable will contain the ^TMP("GMVHLOC",\$J) global array reference. The ^TMP("GMVHLOC",\$J) global array contains the results.

The OPTION variable identifies a line label in the GMVRPCHL routine that will be invoked to process the call.

The DATA variable contains any additional values needed by the OPTION variable to process the call.

1) When the OPTION value is NAME, this RPC will do a file lookup.

The DATA value is a three part value separated by carets(^). The first part is a file number. The second part is a value to look up. The third part is the field or fields to do the look up on. If the third piece is not defined, the lookup is done on the .01 field of the file.

The TMP global contains:

```
^TMP("GMVHLOC",$J,0)=piece1
^TMP("GMVHLOC",$J,n)=piece2^piece3
```

where piece1 = number of entries found
 piece2 = file number, a semi-colon and record IEN
 piece3 = field value

Example:

```
>S OPTION="NAME",DATA="44^OUTPATIENT^.01"
>D RPC^GMVRPCHL(.RESULT,OPTION,DATA) ZW RESULT
>RESULT="^TMP("GMVHLOC",539052767)"
>D ^%G
>Global ^TMP("GMVHLOC",$J
>^TMP("GMVHLOC",539052767,0)=3
    1)=44;75^OUTPATIENT NUC MED
    2)=44;74^OUTPATIENT RADIOLOGY
    3)=44;80^OUTPATIENT ULTRASOUND
```

2) When the OPTION value is APPT, this RPC will return a list of clinic appointments for the patient.

The DATA value is a four part value separated by carets(^). The first piece is DFN. The second piece is the start date of the search. If not defined, this value defaults to 365 days prior to today. The third piece is the end date of the search. If not defined, the value defaults to today. Both dates are in FileMan internal format. The fourth piece is a string of numbers to indicate what types of appointments to return. If not defined, the value defaults to "123456789" (i.e., all appointment types) where:

- 1 - Active/Kept
- 2 - Inpatient appts. only
- 3 - No-shows
- 4 - No-shows, auto-rebook
- 5 - Cancelled by clinic
- 6 - Cancelled by clinic, auto rebook
- 7 - Cancelled by patient
- 8 - Cancelled by patient, auto rebook
- 9 - No action taken

The TMP global contains:

Exported Options

```
^TMP ("GMVHLOC", $J, 0) = piece1
^TMP ("GMVHLOC", $J, n) = piece2^piece3^piece4^piece5^piece6^piece7
                        ^piece8^piece9^
```

where piece1 = number of entries found
piece2 = date/time of appt (FM internal)
piece3 = date/time of appt (external)
piece4 = hospital location IEN (FILE 44)
piece5 = hospital location name (FILE 44, Field .01)
piece6 = appt status (internal)
piece7 = appt status (external)
piece8 = appt type (internal)
piece9 = appt type (external)

Example:

```
> S OPTION="APPT", DATA="78^3051201^3051206^"
> D RPC^GMVRPCHL(.RESULT, OPTION, DATA) ZW RESULT
> RESULT="^TMP ("GMVHLOC", 539052767) "
> D ^%G
> Global ^TMP ("GMVHLOC", $J
> ^TMP ("GMVHLOC", 539052767, 0) = 1
                                1) = 3051206.1^DEC 6, 2005@10:00^88^WEIGHT
                                CLINIC^^^9^REGULAR
```

3) When the OPTION value is ADMIT, this RPC will return a list of hospital admissions for the patient specified.

The DATA value is the patient's DFN.

The TMP global contains:

```
^TMP ("GMVHLOC", $J, 0) = piece1
^TMP ("GMVHLOC", $J, n) = piece2^piece3^piece4^piece5^piece6
```

where piece1 = number of entries found
piece2 = date/time of admission (external)
piece3 = hospital location IEN (FILE 44)
piece4 = hospital location name (FILE 44, Field .01)
piece5 = type of movement (FILE 405.1, Field .01)
piece6 = movement IEN (FILE 405)

Example:

```
> S OPTION="ADMIT", DATA=134
> D RPC^GMVRPCHL(.RESULT, OPTION, DATA) ZW RESULT
> RESULT="^TMP ("GMVHLOC", 539052767) "
> D ^%G
> Global ^TMP ("GMVHLOC", $J
> ^TMP ("GMVHLOC", 539052767, 0) = 1
                                1) = Apr 09, 2001 1:48:43 pm^67^
                                2-ASM^DIRECT^1712
```

4) When the OPTION value is CLINIC, this RPC will return a list of active clinics.

The DATA value is FROM^MAXIMUM^DIRECTION.

Where:

FROM = Value to begin the search (optional). Default is null (i.e., start with the first entry in the B x-ref).
MAXIMUM = Maximum number of entries to return. (optional)
Default is 100.
DIRECTION = Direction of search (optional). 1 means forward and -1

means backwards. Default is 1.

The TMP global contains:

```
^TMP("GMVHLOC", $J, 0) = piece1
^TMP("GMVHLOC", $J, n) = piece2 ^ piece3
```

where piece1 = number of entries found
 piece2 = 44;ien (44, a semi-colon and the entry number)
 piece3 = location name (FILE 44, Field .01)
 n is a sequential number starting with zero

Example:

```
> S OPTION="CLINIC", DATA="A^5^1"
> K RESULTS D RPC^GMVRPCHL(.RESULTS, OPTION, DATA) ZW RESULTS
> RESULTS="^TMP("GMVHLOC", 540221719) "
> D ^%G
> Global ^TMP("GMVHLOC", $J
> ^TMP("GMVHLOC", 540221719, 0) = 5
    1) = 44; 140 ^ ANDY'S AUDIO NON-COUNT CLINIC
    2) = 44; 139 ^ ANDY'S AUDIOLOGY COUNT CLINIC
    3) = 44; 76 ^ AUDIOLOGY AND SPEECH PATHOLOGY
    4) = 44; 87 ^ BARB'S CLINIC
    5) = 44; 217 ^ BOISE OUTPATIENT
```

If an error is encountered for NAME, ADMIT, APPT or CLINIC, a "-1" followed by a caret and the error message text (i.e., -1^error message) is returned in RESULT(0).

```
NAME: GMV MANAGER TAG: RPC
ROUTINE: GMVRPCM RETURN VALUE TYPE: GLOBAL ARRAY
AVAILABILITY: SUBSCRIPTION INACTIVE: ACTIVE
WORD WRAP ON: TRUE
1DESCRIPTION:
Performs many functions for the Manager module.
```

This remote procedure call is documented in Integration Agreement 4360.

```
INPUT PARAMETER: OPTION PARAMETER TYPE: LITERAL
MAXIMUM DATA LENGTH: 10 REQUIRED: YES
SEQUENCE NUMBER: 1
```

DESCRIPTION:

Routine tag line in GMVRPCM to call.

```
INPUT PARAMETER: DATA PARAMETER TYPE: LITERAL
MAXIMUM DATA LENGTH: 100 REQUIRED: YES
SEQUENCE NUMBER: 2
```

DESCRIPTION:

Other data as required for the call.

RETURN PARAMETER DESCRIPTION:

This remote procedure call performs various actions such as building selection lists and modifying package parameters. The entry point is RPC^GMVRPCM. It has input parameters of RESULTS, OPTION and DATA (ex: RPC^GMVRPCM(.RESULTS, OPTION, DATA)).

The RESULTS variable will contain the ^TMP("GMVMGR", \$J) global array reference. The ^TMP("GMVMGR", \$J) global array contains the results.

The OPTION variable identifies a line label in the GMVRPCM routine that will be invoked to process the call.

¹ April 2006 Patch GMRV*5.0*3 Updated the routine description.

Exported Options

The DATA variable contains any additional values needed by the OPTION variable to process the call.

1) When the OPTION value is ADDQUAL, this RPC will link a GMRV VITAL QUALIFIER (#120.52) file entry to a GMRV VITAL TYPE (#120.51) file entry.

The DATA value is a three part value separated by semi-colons(;). The first value is the FILE 120.51 internal entry number (IEN). The second value is the GMRV VITAL CATEGORY (#120.53) IEN. The third value is the GMRV VITAL QUALIFIER (#120.52).

Example:

```
> S DATA="1;1;1"
> S OPTION="ADDQUAL"
> D RPC^GMVRPCM(.RESULT,OPTION,DATA) ZW RESULT
> RESULT="^TMP("GMVMGR",539356158)"
> D ^%G
> Global ^TMP("GMVMGR",$J
> ^TMP("GMVMGR",539356158,0)=1^Qualifier Assigned
```

If an error is encountered, a "-1" followed by a caret and the error message text (i.e., -1^error message) is returned.

2) When the OPTION value is DELQUAL, this RPC will unlink a qualifier to a GMRV VITAL TYPE (#120.51) file entry.

The DATA value is a three part value separated by semi-colons. The first value is the FILE 120.51 internal entry number (IEN). The second value is the GMRV VITAL CATEGORY (#120.53) IEN. The third value is the GMRV VITAL QUALIFIER (#120.52) IEN.

Example:

```
> S DATA="1;1;1"
> S OPTION="DELQUAL"
> D RPC^GMVRPCM(.RESULT,OPTION,DATA) ZW RESULT
> RESULT="^TMP("GMVMGR",539356158)"
> D ^%G
> Global ^TMP("GMVMGR",$J
> ^TMP("GMVMGR",539356158,0)=1^Qualifier removed.
```

If an error is encountered, a "-1" followed by a caret and the error message text (i.e., -1^error message) is returned.

3) When the OPTION value is DELTEMP, this RPC will delete a data input template definition.

The DATA value is a two part value separated by a caret (^). The first value is the ENTITY value. See IA #2263 for a list of entity values. The second value is the name of the data input template.

Example:

```
> S DATA="USR^PAIN ONLY"
> S OPTION="DELTEMP"
> D RPC^GMVRPCM(.RESULT,OPTION,DATA) ZW RESULT
> RESULT="^TMP("GMVMGR",539356158)"
> D ^%G
> Global ^TMP("GMVMGR",$J
```

```
> ^TMP("GMVMGR",539356158,0)=1^Template Removed.
```

If an error is encountered, a "-1" followed by a caret and the error message text (i.e., -1^error message) is returned.

4) When the OPTION value is GETCATS, this RPC will return a list of qualifiers (FILE 120.52) associated with a vital type (FILE 120.51).

The DATA value is a one part value. It is a pointer value to FILE 120.51

The TMP global contains:

```
^TMP("GMVMGR",$J,0)=piece1^piece2
^TMP("GMVMGR",$J,n)=piece3^piece4^piece5
```

where piece1 = number of categories (FILE 120.53) associated with this vital type
 piece2 = vital type name
 piece3 = category IEN (FILE 120.53)
 piece4 = category name (FILE 120.53, Field .01)
 piece5 = qualifier names (FILE 120.52, Field .01) separated by a comma and space
 n = sequential number starting with 1

Example:

```
> S DATA="21"
> S OPTION="GETCATS"
> D RPC^GMVRPCM(.RESULT,OPTION,DATA) ZW RESULT
> RESULT="^TMP("GMVMGR",539356158)"
> D ^%G
> Global ^TMP("GMVMGR",$J
> ^TMP("GMVMGR",539356158,0)=1^PULSE OXIMETRY
      1)=2^METHOD^AEROSOL/HUMIDIFIED MASK, CPAP, FACE
      TENT, L ARM, MASK, NASAL CANNULA, NON RE-BREATHING, PARTIAL RE-BREATHING,
      ROOM AIR, T-PIECE, TRACHEOSTOMY COLLAR, VENTILATOR, VENTURI MASK
```

If an error is encountered, a "-1" followed by a caret and the error message text (i.e., -1^error message) is returned.

5) When the OPTION value is GETDATA, this RPC will return the value of the entry you specify.

The DATA value is a three part value. The first part is the file number. The second part is the IEN number of the entry. The third part is the field number.

The TMP global contains:

```
^TMP("GMVMGR",$J,0)=external value of the field
```

Example:

```
> S DATA="120.51^1^1"
> D RPC(.RESULT,"GETDATA",DATA) ZW RESULT
> RESULT="^TMP("GMVMGR",539339804)"
> D ^%G
> Global ^TMP("GMVMGR",$J
> ^TMP("GMVMGR",539339804,0)=BP
```

If a value cannot be found, then a null value is returned.

Exported Options

6) When the OPTION value is GETDEF, this RPC will return default template names.

The DATA value is a one part value. If it is null, then all default templates for that user will be returned.

The TMP global contains:

```
^TMP("GMVMGR", $J, 0) = piece1
^TMP("GMVMGR", $J, n) = piece2 ^ piece3
```

where piece1 = number of templates found
piece2 = an IEN value, a semi-colon, and a global reference
piece3 = template name
n = sequential number starting with 1

Example A:

```
> S DATA=""
> S OPTION="GETDEF"
> D RPC^GMVRPCM(.RESULT, OPTION, DATA) ZW RESULT
> RESULT="" ^TMP("GMVMGR", 539356158) "
> D ^%G
> Global ^TMP("GMVMGR", $J
> ^TMP("GMVMGR", 539356158, 0) = 4
                                1) = 125; SC(^WARD 10A
                                2) = 334; DIC(4.2, ^TEST
                                3) = 4601; VA(200, ^Height ONLY
                                4) = 547; VA(200, ^All Vital Signs
```

If the DATA value is an entity value (see IA 2263 for a list of entity values), then the default template name for that entity will be returned.

The TMP global contains:

```
^TMP("GMVMGR", $J, 0) = template name
```

Example B:

```
> S DATA="USR"
> S OPTION="GETDEF"
> D RPC^GMVRPCM(.RESULT, OPTION, DATA) ZW RESULT
> RESULT="" ^TMP("GMVMGR", 539356158) "
> D ^%G
> Global ^TMP("GMVMGR", $J
> ^TMP("GMVMGR", 539356158, 0) = MY DEFAULT
```

If an error is encountered, a "-1" followed by a caret and the error message text (i.e., -1^error message) is returned.

7) When the OPTION value is GETHILO, this RPC will return the abnormal high or low value for a vital type.

The DATA value is a one part value which identifies a field number in the GMRV VITALS PARAMETERS (#120.57) field.

The TMP global contains:

```
^TMP("GMVMGR", $J, 0) = field value
```

Example:

```
> S DATA=5.2
> S OPTION="GETHILO"
> D RPC^GMVRPCM(.RESULT, OPTION, DATA) ZW RESULT
> RESULT="" ^TMP("GMVMGR", 539356158) "
```



```
> D ^%G
> Global ^TMP("GMVMGR",$J
> ^TMP("GMVMGR",539356158,0)=94
```

A zero is returned if there is no value in the field.

8) When the OPTION value is GETLIST, this RPC returns a list of entries for the file number specified.

The DATA value is a one part value. It is a file number.

The TMP global contains:

```
^TMP("GMVMGR",$J,0)=piece1^piece2
^TMP("GMVMGR",$J,n)=piece3^piece4
```

```
where piece1 = number of entries returned
      piece2 = file name [not returned in all cases]
      piece3 = file number, a semi-colon and record IEN
      piece4 = the .01 value of the record
      n = sequential number starting with 1
```

Examples:

Retrieve a list of wards.

```
> S DATA=42
> S OPTION="GETLIST"
> D RPC^GMVRPCM(.RESULT,OPTION,DATA) ZW RESULT
> RESULT="^TMP("GMVMGR",539363784)"
> D ^%G
> Global ^TMP("GMVMGR",$J
> ^TMP("GMVMGR",539363784,0)=26^WARD LOCATION
      1)=42;14^10A
      n)=42;15^10B
      26)=42;39^10Z
```

Retrieve a list of clinics.

```
> S DATA=44
> S OPTION="GETLIST"
> D RPC^GMVRPCM(.RESULT,OPTION,DATA) ZW RESULT
> RESULT="^TMP("GMVMGR",539363784)"
> D ^%G
> Global ^TMP("GMVMGR",$J
> ^TMP("GMVMGR",539363784,0)=61
      1)=44;6^HOUSE/A
      n)=44;8^HOUSE/C
      61)=44;39^HOUSE/ZZ
```

Retrieve a list vital types.

```
> S DATA=120.51
> S OPTION="GETLIST"
> D RPC^GMVRPCM(.RESULT,OPTION,DATA) ZW RESULT
> RESULT="^TMP("GMVMGR",539363784)"
> D ^%G
> Global ^TMP("GMVMGR",$J
> ^TMP("GMVMGR",539363784,0)=10^GMRV VITAL TYPE
      1)=120.51;1^BLOOD PRESSURE
      N)=120.51;19^CENTRAL VENOUS PRESSURE
      10)=120.51;9^WEIGHT
```

Retrieve a list of qualifiers.

```
> S DATA=120.52
```

Exported Options

```
> S OPTION="GETLIST"
> D RPC^GMVRPCM(.RESULT,OPTION,DATA) ZW RESULT
> RESULT="^TMP("GMVMGR",539363784)"
> D ^%G
> Global ^TMP("GMVMGR",$J
> ^TMP("GMVMGR",539363784,0)=80^GMRV VITAL QUALIFIER
      1)=120.52;74^ABDOMINAL
      n)=120.52;42^ACTUAL
      80)=120.52;99^WRIST
```

Retrieve a list of CPRS teams.

```
> S DATA=100.21
> S OPTION="GETLIST"
> D RPC^GMVRPCM(.RESULT,OPTION,DATA) ZW RESULT
> RESULT="^TMP("GMVMGR",539363784)"
> D ^%G
> Global ^TMP("GMVMGR",$J
> ^TMP("GMVMGR",539363784,0)=103
      1)=100.21;28^1AS
      n)=100.21;60^1ASO
      103)=100.21;96^consult team
```

Retrieve a list of nursing units.

```
> S DATA=211.4
> S OPTION="GETLIST"
> D RPC^GMVRPCM(.RESULT,OPTION,DATA) ZW RESULT
> RESULT="^TMP("GMVMGR",539363784)"
> D ^%G
> Global ^TMP("GMVMGR",$J
> ^TMP("GMVMGR",539363784,0)=21
      1)=211.4;7^10E
      n)=211.4;17^10W
      21)=211.4;9^SICU
```

If an error is encountered, a "-1" followed by a caret and the error message text (i.e., -1^error message) is returned.

9) When the OPTION value is GETQUAL, this RPC returns a list of qualifiers associated with this vital type.

The DATA value is a two part value separated by a semi-colon. The first part is vital type (FILE 120.51) IEN. The second part is a category (FILE 120.53) IEN.

The TMP global contains:

```
^TMP("GMVMGR",$J,0)=piece1^piece2
^TMP("GMVMGR",$J,n)=piece3^piece4
```

where piece1 = number of entries found
piece2 = category name (FILE 120.53, Field .01)
piece3 = qualifier IEN
piece4 = qualifier name (FILE 120.52, Field .01)
n = sequential number starting with 1

Example:

```
> S DATA="1;1",OPTION="GETQUAL"
> D RPC^GMVRPCM(.RESULT,OPTION,DATA) ZW RESULT
> RESULT="^TMP("GMVMGR",539356158)"
> D ^%G
> Global ^TMP("GMVMGR",$J
```

```
> ^TMP("GMVMGR",539356158,0)=6^LOCATION
      1)=139^Test Qualifier
      2)=53^FEMORAL
      3)=2^L ARM
      4)=4^L LEG
      5)=24^PERIPHERAL
      6)=1^R ARM
```

If an error is encountered, a "-1" followed by a caret and the error message text (i.e., -1^error message) is returned.

10) When the OPTION value is GETTEMP, this RPC will return a list data input templates definitions.

The DATA value is a two part value separated by a caret. The first part is an entity value. See IA 2263 for a list of entities. The second part is a data input template name.

When DATA is null, all data input template definitions are returned.

The TMP global contains:

```
^TMP("GMVMGR",$J,0)=piece1
^TMP("GMVMGR",$J,n)=piece2^piece3^piece4^piece5^piece6
```

where piece1 = number of entries returned
 piece2 = 1, 2, 3, or 4. (1 = Domain, 2 = Institution, 3 = Hospital location and 4 = New Person)
 piece3 = file IEN, a semi-colon and global reference
 piece4 = Field .01 value of the file specified in piece3
 piece5 = template name
 piece6 = template description text, a bar, vital type IEN (FILE 120.51), a colon, a metric flag (0=U.S. and 1=metric), category IEN (FILE 120.53), a coma, and a qualifier IEN (FILE 120.52), a tilde indicates additional category and qualifier combinations for the vital type. A semi-colon indicates the start of the next vital type.
 n = sequential number starting with 1

Example:

```
> S DATA="USR",OPTION="GETTEMP"
> D RPC^GMVRPCM(.RESULT,OPTION,DATA) ZW RESULT
> RESULT="^TMP("GMVMGR",539356158)"
> D ^%G
> Global ^TMP("GMVMGR",$J
> ^TMP("GMVMGR",539356158,0)=1
      1)=4^547;VA(200,^VITUSER,ONE^MY DEFAULT^ALL
      VITALS|1:0:1,2~2,59~3,50;20:1|
```

If an error is encountered, a "-1" followed by a caret and the error message text (i.e., -1^error message) is returned.

11) When the OPTION value is LOOKUP, this RPC will do a file lookup

The DATA value is a three part value separated by a caret. The first part is a file number. The second part is a value to look up. The third part is the field or fields to do the look up on. If the third piece is not defined, the lookup is done on the .01 field of the file.

The TMP global contains:

Exported Options

```
^TMP ("GMVMGR", $J, 0) = piece1
^TMP ("GMVMGR", $J, n) = piece2 ^ piece3
```

where piece1 = number of entries found
piece2 = file number, a semi-colon and record IEN
piece3 = field value

Example:

```
> S DATA="44^OUTPAT^.01", OPTION="LOOKUP"
> D RPC^GMVRPCM(.RESULT, OPTION, DATA) ZW RESULT
> RESULT="^TMP ("GMVMGR", 539359648) "
> D ^%G
> Global ^TMP ("GMVMGR", $J
> ^TMP ("GMVMGR", 539359648, 0) = 3
    1) = 44; 75^OUTPATIENT NUC MED
    2) = 44; 74^OUTPATIENT RADIOLOGY
    3) = 44; 80^OUTPATIENT ULTRASOUND
```

If an error is encountered, a "-1" followed by a caret and the error message text (i.e., -1^error message) is returned.

12) When the OPTION value is NEWQUAL, this RPC will always return an error message instructing the user to use the New Term Rapid Turnaround process.

The DATA value is always null.

Example:

```
> S DATA=""
> S OPTION="NEWQUAL"
> D RPC^GMVRPCM(.RESULT, OPTION, DATA) ZW RESULT
> RESULT="^TMP ("GMVMGR", 539356158) "
> D ^%G
> Global ^TMP ("GMVMGR", $J
> ^TMP ("GMVMGR", 539356158, 0) = -1^Use the New Term Rapid Turnaround (NTRT)
  process to add qualifiers
```

13) When the OPTION value is NEWTEMP, this RPC will file a new data input template.

The DATA value is a three part value separated by a caret. The first part is an entity. See IA 2263 for a list of entities. The second part is the name of the data input template. The third part is the description text. If the third part is null, the template description will default to "No Description".

The TMP global contains:

```
^TMP ("GMVMGR", $J, 0) = piece1 ^ piece2 ^ piece3 ^ piece4
```

where piece1 = 1, 2, 3, or 4 (1 = DOMAIN (#4.2), 2 = INSTITUTION (#4),
3 = HOSPITAL LOCATION, and 4 = NEW PERSON)
piece2 = IEN, a semi-colon, and global reference (e.g., 3;DIC(4.2))
piece3 = the .01 field value for the record in piece2
piece4 = data input name

Example:

```
> S DATA="USR^1 EAST^All Vital Types"
> S OPTION="NEWTEMP"
> D RPC^GMVRPCM(.RESULT, OPTION, DATA) ZW RESULT
```

```
> RESULT="^TMP("GMVMGR",539343036)"
> D ^%G
> Global ^TMP("GMVMGR",$J
> ^TMP("GMVMGR",539343036,0)=4^547;VA(200,^VITUSER,ONE^1 EAST
```

If an error is encountered, a "-1" followed by a caret and the error message text (i.e., -1^error message) is returned.

14) When the OPTION value is RENTEMP, this RPC will rename a data input template.

The DATA value is a three part value separated by a caret. The first part is an entity. See IA 2263 for a list of entities. The second part is the current template name. The third part is the new name of the template.

The TMP global contains:

```
^TMP("GMVMGR",$J,0)=1^Renamed
```

Example:

```
> S DATA="USR^FRANK'S DEFAULT^MY DEFAULT"
> S OPTION="RENTEMP"
> D RPC^GMVRPCM(.RESULT,OPTION,DATA) ZW RESULT
> RESULT="^TMP("GMVMGR",539356158)"
> D ^%G
> Global ^TMP("GMVMGR",$J
> ^TMP("GMVMGR",539356158,0)=1^Renamed
```

If an error is encountered, a "-1" followed by a caret and the error message text (i.e., -1^error message) is returned.

15) When the OPTION value is SETDATA, this RPC always returns an error message that instructs the user to use the New Term Rapid Turnaround process.

The DATA value is null.

Example:

```
> S DATA=""
> S OPTION="SETDATA"
> D RPC^GMVRPCM(.RESULT,OPTION,DATA) ZW RESULT
> RESULT="^TMP("GMVMGR",539356158)"
> D ^%G
> Global ^TMP("GMVMGR",$J
> ^TMP("GMVMGR",539356158,0)=-1^Use the New Term Rapid Turnaround (NTRT)
process to add qualifiers
```

16) When the OPTION value is SETDEF, this RPC will set that data input template as a default.

The DATA value is a two part value separated by a caret. The first part is an entity. See IA 2263 for a list of entities. The second part is the name of the template that will become the default template.

The TMP global contains:

```
^TMP("GMVMGR",$J,0)=1^Set As Default
```

Example:

```
> S DATA="USR^FRANK'S LIST"
```

Exported Options

```
> S OPTION="SETDEF"
> D RPC^GMVRPCM(.RESULT,OPTION,DATA) ZW RESULT
> RESULT="^TMP("GMVMGR",539356158)"
> D ^%G
> Global ^TMP("GMVMGR",$J
> ^TMP("GMVMGR",539356158,0)=1^Set As Default.
```

If an error is encountered, a "-1" followed by a caret and the error message text (i.e., -1^error message) is returned.

17) When the OPTION value is SETHILO, this RPC will set the high and low abnormal values for a vital type.

The DATA value is a two part value separated by a caret. The first part is a field number in the GMRV VITALS PARAMETERS (#120.57) file. The second part is the value that field should be set to.

The TMP global contains:

```
^TMP("GMVMGR",$J,0)=1^Update Complete.
```

Example:

```
> S DATA="5.1^102",OPTION="SETHILO"
> D RPC^GMVRPCM(.RESULT,OPTION,DATA) ZW RESULT
> RESULT="^TMP("GMVMGR",539356158)"
> D ^%G
> Global ^TMP("GMVMGR",$J
> ^TMP("GMVMGR",539356158,0)=1^Update Complete.
```

If an error is encountered, a "-1" followed by a caret and the error message text (i.e., -1^error message) is returned.

18) When the OPTION value is SETTEMP, this RPC will save the input template definition.

DATA is a three part value separated by a caret. The first part is an entity. See IA 2263 for a list of entities. The second part is the template name. The third part is the template definition.

The TMP global contains:

```
^TMP("GMVMGR",$J,0)=1^Template Saved.
```

Example:

```
> S DATA="USR^ONE VITAL TYPE ONLY^CONTAINS ONLY ONE VITAL TYPE|2:0:1,102"|
> S OPTION="SETTEMP"
> D RPC^GMVRPCM(.RESULT,OPTION,DATA) ZW RESULT
> RESULT="^TMP("GMVMGR",539356158)"
> D ^%G
> Global ^TMP("GMVMGR",$J
> ^TMP("GMVMGR",539356158,0)=1^Template Saved.
```

If an error is encountered, a "-1" followed by a caret and the error message text (i.e., -1^error message) is returned.

19) When the OPTION value is VALID, this RPC will validate data.

DATA is a four part value separated by a caret. The first part is the a file number. The second part is a record number. The third part is a

field number. The fourth part is the value to validate.

The TMP global contains:

```
^TMP("GMVMGR", $J, 0) = 1^Valid Data
```

Example:

```
> S DATA="120.5^8864^.01^3051012.1034", OPTION="VALID"
> D RPC^GMVRPCM(.RESULT, OPTION, DATA) ZW RESULT
> RESULT="^TMP("GMVMGR", 539343036) "
> D ^%G
> Global ^TMP("GMVMGR", $J
> ^TMP("GMVMGR", 539343036, 0) = 1^Valid Data
```

If an error is encountered, a "-1" followed by a caret and the error message text (i.e., -1^error message) is returned.

```
NAME: GMV MARK ERROR TAG: ERROR
ROUTINE: GMVUTL1 RETURN VALUE TYPE: SINGLE VALUE
AVAILABILITY: SUBSCRIPTION INACTIVE: ACTIVE
```

¹DESCRIPTION:

This remote procedure call marks a selected vitals record in the GMRV Vital Measurement (#120.5) file as entered-in-error.

This remote procedure call is documented in Integration Agreement 4414.

```
INPUT PARAMETER: GMVDATA PARAMETER TYPE: LITERAL
MAXIMUM DATA LENGTH: 60 REQUIRED: YES
SEQUENCE NUMBER: 1
```

DESCRIPTION:

GMVDATA contains the following information:

```
piece1^piece2^piece3
```

```
where piece1 = FILE 120.5 IEN
      piece2 = FILE 200 IEN (i.e., DUZ)
      piece3 = A single value to indicate the reason for the error.
              1 = INCORRECT DATE/TIME, 2 = INCORRECT READING, 3 =
              INCORRECT PATIENT and 4 = INVALID RECORD
```

RETURN PARAMETER DESCRIPTION:

If the record is marked as entered in error, RESULT is set to "OK". Otherwise, RESULT is set to "Record Not Found"

Example:

```
> S GMVDATA="1560^547^1"
> D ERROR^GMVUTL1(.RESULT, GMVDATA) ZW RESULT
> RESULT="OK"
```

```
NAME: GMV NUR UNIT PT TAG: APTLIST
ROUTINE: GMVUTL8 RETURN VALUE TYPE: ARRAY
AVAILABILITY: RESTRICTED INACTIVE: ACTIVE
```

²DESCRIPTION:

Returns a list of active patients for a nursing location.

```
INPUT PARAMETER: LOC PARAMETER TYPE: LITERAL
MAXIMUM DATA LENGTH: 60 REQUIRED: YES
SEQUENCE NUMBER: 1
```

DESCRIPTION:

NURS LOCATION file (#211.4) ien.

¹ April 2006 Patch GMRV*5.0*3 Updated the routine description.

² April 2006 Patch GMRV*5.0*3 Updated the routine description.

Exported Options

RETURN PARAMETER DESCRIPTION:

ARRAY - Subscripted by sequential number with DFN in first piece and patient name in second piece.

example: ARRAY(#)=DFN^patient name^SSN^DOB^SEX AND AGE^ATTENDING^VETERAN
^INTERNAL DATE/TIME DECEASED^EXTERNAL DATE/TIME DECEASED

NAME: **GMV PARAMETER**

TAG: RPC

ROUTINE: GMVPAR

RETURN VALUE TYPE: GLOBAL ARRAY

AVAILABILITY: SUBSCRIPTION

INACTIVE: ACTIVE

WORD WRAP ON: TRUE

¹DESCRIPTION:

Sets and retrieves parameter values used by the graphical user interface.

This remote procedure call is documented in Integration Agreement 4367.

INPUT PARAMETER: OPTION

PARAMETER TYPE: LITERAL

MAXIMUM DATA LENGTH: 10

REQUIRED: YES

SEQUENCE NUMBER: 1

DESCRIPTION:

Routine tag line to call.

INPUT PARAMETER: ENT

PARAMETER TYPE: LITERAL

SEQUENCE NUMBER: 2

DESCRIPTION:

The entity value to use. See Integration Agreement 2263 and FILE 8989.518 for a list of entity values.

INPUT PARAMETER: PAR

PARAMETER TYPE: LITERAL

SEQUENCE NUMBER: 3

DESCRIPTION:

The parameter value to use. See FILE 8989.51 for a list of parameter values. This value must start with the letters "GMV" (no quotes).

INPUT PARAMETER: INST

PARAMETER TYPE: LITERAL

SEQUENCE NUMBER: 4

DESCRIPTION:

The instance to use.

INPUT PARAMETER: VAL

PARAMETER TYPE: LITERAL

SEQUENCE NUMBER: 6

DESCRIPTION:

The value assigned to a parameter. Values are stored in FILE 8989.5.

RETURN PARAMETER DESCRIPTION:

This remote procedure call sets and retrieves parameter settings that are used in the graphical user interface.

The entry point is RPC^GMVPAR.. It has input parameters of RESULTS, OPTION, ENT, PAR, INST and VAL (ex:

RPC^GMVPAR(RESULTS,OPTION,ENT,PAR,INST,VAL).

The RESULTS variable contains the results of the call or the location where the results can be found.

The OPTION variable identifies the entry point in the GMVPAR routine that will be invoked to process the call.

If an error occurs, the ^TMP global contains:

^TMP(\$J,0)=-1^error message text

1) When the OPTION value is DELPAR, this RPC deletes the value for the instance, parameter and entity specified.

¹ April 2006 Patch GMRV*5.0*3 Updated the routine description.

The TMP global contains:
 ^TMP(\$J,0)=1^Instance deleted

Example:

```
> S OPTION="DELPAR",ENT="SYS",PAR="GMV DLL VERSION"
> S INST="GMV_VITALSVIEWENTER.DLL:v. 07/21/05 10:34"
> D RPC^GMVPAR(.RESULT,OPTION,ENT,PAR,INST) ZW RESULT
> RESULT="^TMP(538999278) "
> D ^%G
> Global ^TMP($J
> ^TMP(538999278,0)=1^Instance deleted
```

2) When the OPTION value is ENTVAL, this RPC returns the external value of the entity specified.

The TMP global contains:
 TMP(\$J,0)=external value

Example:

```
> S OPTION="ENTVAL",ENT="USR"
> D RPC(.RESULT,OPTION,ENT) ZW RESULT
> RESULT="^TMP(538993252) "
> D ^%G
> Global ^TMP($J
> ^TMP(538993252,0)=TRAXLER,FRANK
```

3) When the OPTION value is GETLST, this RPC returns a list of instances and their values for the parameter and entity specified.

The TMP global contains:
 ^TMP(\$J,0)=piece1
 ^TMP(\$J,n)=piece2^piece3

where piece1 = number of entries returned
 piece2 = instance name
 piece3 = instance value
 n = sequential number starting with 1

Example:

```
> S OPTION="GETLST",ENT="USR",PAR="GMV USER DEFAULTS"
> D RPC(.RESULT,OPTION,ENT,PAR) ZW RESULT
> RESULT="^TMP(538993252) "
> D ^%G
> Global ^TMP($J
> ^TMP(538993252,0)=44
    1)=DefaultTemplate^547;VA(200,|MY DEFAULT|
    n)=UNIT_INDEX^0
    44)=WARD_INDEX^-1
```

4) When the OPTION value is GETPAR, this RPC will get the value for the instance, parameter and entity specified.

The TMP global contains:
 ^TMP(\$J,0)=piece1

where piece1 = value

Exported Options

Example:

```
> S ENT="USR",PAR="GMV USER DEFAULTS",INST="DefaultTemplate"  
> S OPTION="GETPAR"  
> D RPC(.RESULT,OPTION,ENT,PAR,INST) ZW RESULT  
> RESULT="^TMP(538993252)"  
> D ^%G  
> Global ^TMP($J  
> ^TMP(538993252,0)=547;VA(200,|MY DEFAULT|
```

5) When the OPTION value is SETPAR, this RPC set the value of an instance for the instance, parameter and entity specified.

The TMP global contains:

```
^TMP($J,0)=1^Parameter updated
```

Example:

```
> S OPTION="SETPAR",ENT="USR",PAR="GMV USER DEFAULTS",INST="SearchDelay"  
> S VAL=1.5  
> D RPC^GMVPAR(.RESULT,OPTION,ENT,PAR,INST,VAL) ZW RESULT  
> RESULT="^TMP(538999278)"  
> D ^%G  
> Global ^TMP($J  
> ^TMP(538999278,0)=1^Parameter updated
```

```
NAME: GMV PT GRAPH TAG: EN1  
ROUTINE: GMVSR0 RETURN VALUE TYPE: SINGLE VALUE  
AVAILABILITY: RESTRICTED INACTIVE: ACTIVE  
DESCRIPTION:  
Prints Vitals/Measurements Graphic Reports.  
INPUT PARAMETER: GMVDATA PARAMETER TYPE: LITERAL  
MAXIMUM DATA LENGTH: 150 REQUIRED: YES  
SEQUENCE NUMBER: 1  
DESCRIPTION:  
A multi-piece variable that identifies the values needed to run the  
report.
```

```
Piece 1: DFN  
2: Start date/time of the report range (FileMan format)  
3: End date/time of the report range (FileMan format)  
4: Number indicating graph type *  
5: Device name (File 3.5, Field .01)  
6: Device internal entry number  
7: date/time to print the report (FileMan format)  
8: ward internal entry number (File 42)  
9: hospital location internal entry number (File 44)  
10: list of rooms separated by a comma (e.g., 200,210,220)
```

```
* Graph = 1 prints Vital Signs Record  
= 2 prints B/P Plotting Chart  
= 3 prints Weight Chart  
= 4 prints Pulse Oximetry/Respiratory Graph  
= 5 prints Pain Chart
```

RETURN PARAMETER DESCRIPTION:

Returns a message stating the outcome of the request to queue the report. If the report was successfully queued, RESULT will be "Report sent to device. Task #: " ZTSK" where ZTSK is the task number of the job. If the report could not be queued, RESULT will be "Unable to task the report."

```
NAME: GMV PTSELECT TAG: RPC  
ROUTINE: GMVRPCP RETURN VALUE TYPE: GLOBAL ARRAY
```

AVAILABILITY: RESTRICTED INACTIVE: ACTIVE
 WORD WRAP ON: TRUE
 DESCRIPTION:
 Used as a method of processing a patient DFN and returning all warnings and notices (i.e. sensitivity or same last 4 of SSN) to the client application for processing. Also includes a call to log access of sensitive patients to the DG SECURITY LOG file.
 INPUT PARAMETER: RESULT PARAMETER TYPE: REFERENCE
 MAXIMUM DATA LENGTH: 30 REQUIRED: YES
 SEQUENCE NUMBER: 1
 DESCRIPTION:
 This is the RPC return array variable.
 INPUT PARAMETER: OPTION PARAMETER TYPE: LITERAL
 MAXIMUM DATA LENGTH: 30 REQUIRED: YES
 SEQUENCE NUMBER: 2
 DESCRIPTION:
 Contains the appropriate method to perform within this RPC call.

Options are:

SELECT: Performs a select of the supplied DFN (param 3) and returns the notices and warnings for the DFN

LOGSEC: Logs a security entry in the DG SECURITY LOG file.

INPUT PARAMETER: DFN PARAMETER TYPE: LITERAL
 MAXIMUM DATA LENGTH: 12 REQUIRED: YES
 SEQUENCE NUMBER: 3
 DESCRIPTION:
 Contains the DFN of the patient to process in the SELECT or LOGSEC method of param 2.
 INPUT PARAMETER: DATA PARAMETER TYPE: LITERAL
 MAXIMUM DATA LENGTH: 80 REQUIRED: NO
 SEQUENCE NUMBER: 4
 DESCRIPTION:
 Used to pass in the option name to DGSEC when logging against the DG SECURITY LOG file.
 RETURN PARAMETER DESCRIPTION:
 RESULTS(0) =Success or failure flag (-1 or 1) from both SELECT & LOGSEC methods
 RESULTS(1..n)=Messages to process by the client from the SELECT method.

NAME: **GMV QUALIFIER TABLE** TAG: EN1
 ROUTINE: GMVCAQU RETURN VALUE TYPE: GLOBAL ARRAY
 AVAILABILITY: RESTRICTED INACTIVE: ACTIVE
 WORD WRAP ON: TRUE
 DESCRIPTION:
 Prints a list of categories and qualifiers associated with individual vital types (e.g., blood pressure). Data comes from the GMRV Vital Qualifier (#120.52) file and the GMRV Vital Category (#120.53) file.
 INPUT PARAMETER: GMVDATA PARAMETER TYPE: LITERAL
 MAXIMUM DATA LENGTH: 150 REQUIRED: YES
 SEQUENCE NUMBER: 1
 DESCRIPTION:
 A multi-piece variable that identifies the values needed to run the report.

Piece 1: n/a
 2: n/a
 3: n/a
 4: n/a
 5: Device name (File 3.5, Field .01)
 6: Device internal entry number

Exported Options

7: date/time to print the report (FileMan format)
8: n/a
9: n/a
10: n/a

RETURN PARAMETER DESCRIPTION:

Returns a message stating the outcome of the request to queue the report. If the report was successfully queued, RESULT will be "Report sent to device. Task #: " ZTSK" where ZTSK is the task number of the job. If the report could not be queued, RESULT will be "Unable to task the report."

NAME: **GMV ROOM/BED** TAG: ROOMBED
ROUTINE: GMVGETD RETURN VALUE TYPE: GLOBAL ARRAY
AVAILABILITY: RESTRICTED INACTIVE: ACTIVE
WORD WRAP ON: TRUE

DESCRIPTION:

This procedure extracts room/bed information from Room-Bed file (#405.4) for a given MAS ward.

INPUT PARAMETER: GMRWARD PARAMETER TYPE: LITERAL
MAXIMUM DATA LENGTH: 30 REQUIRED: YES
SEQUENCE NUMBER: 1

DESCRIPTION:

GMRWARD is a MAS ward name from the Ward Location file (#42).

RETURN PARAMETER DESCRIPTION:

Returns the global array name (i.e., ^TMP(\$J,"GROOM")) containing a list of rooms/beds for the given MAS ward.

^TMP(\$J,"GROOM",n)=Roombed

n is a sequential number starting at 1.

If there is no data, then the global array is undefined.

NAME: **GMV TEAM PATIENTS** TAG: TEAMPT
ROUTINE: GMVUTL3 RETURN VALUE TYPE: ARRAY
AVAILABILITY: RESTRICTED INACTIVE: ACTIVE
WORD WRAP ON: TRUE

DESCRIPTION:

This procedure retrieves patients assigned to a given team.

INPUT PARAMETER: GMVTEAM PARAMETER TYPE: LITERAL
MAXIMUM DATA LENGTH: 30 REQUIRED: YES
SEQUENCE NUMBER: 1

DESCRIPTION:

GMVTEAM is the internal entry number of the selected team (File 100.21).

RETURN PARAMETER DESCRIPTION:

Returns a list of patients in the array specified.

RESULT(n)=Patient name^DFN^SSN (w/hyphens)^DOB (external)^SEX and AGE^
Attending^Veteran^Date of Death (external)^Date of Death
(internal)^Ward name^Roombed

n is a sequential number starting at 1.

NAME: **GMV USER** TAG: RPC
ROUTINE: GMVRPCU RETURN VALUE TYPE: GLOBAL ARRAY
AVAILABILITY: SUBSCRIPTION INACTIVE: ACTIVE
WORD WRAP ON: TRUE

¹DESCRIPTION:

Retrieves data about the user (e.g., parameter settings).

¹ April 2006 Patch GMRV*5.0*3 Updated the routine description.

This remote procedure call is documented in Integration Agreement 4366.

```
INPUT PARAMETER: OPTION          PARAMETER TYPE: LITERAL
  MAXIMUM DATA LENGTH: 10      REQUIRED: YES
  SEQUENCE NUMBER: 1
```

DESCRIPTION:

Routine tag line to call in GMVRPCU.

```
INPUT PARAMETER: DATA          PARAMETER TYPE: LITERAL
  MAXIMUM DATA LENGTH: 100     REQUIRED: YES
  SEQUENCE NUMBER: 2
```

DESCRIPTION:

Other data as required for the call.

RETURN PARAMETER DESCRIPTION:

This Remote Procedure Call (RPC) performs various actions focusing on the user. The entry point is RPC^GMVRPCU. It has input parameters of RESULTS, OPTION and DATA (e.g., RPC^GMVRPCU(RESULTS,OPTION,DATA)).

The RESULTS variable contains the results of the call or the location where the results can be found.

The OPTION variable identifies another entry point in the GMVRPCU routine that is invoked to process the call.

The DATA variable contains any values needed by the OPTION variable to process the call.

1) When the OPTION value is SETPAR, this RPC will set and/or delete the value of a GMV USER DEFAULTS setting (e.g., the user's default template).

The DATA value is a two part value separated by a caret. The first part is name of a setting. The second part is the value of the setting. If the second part is null, the existing value of the setting is deleted.

The TMP global contains:

```
^TMP("GMVUSER",$J,0)=1^Parameter set.
or
^TMP("GMVUSER",$J,0)=1^Parameter cleared
```

Example:

```
> S DATA="DefaultTemplate^547;VA(200,|MY DEFAULT",OPTION="SETPAR"|
> D RPC^GMVRPCU(.RESULT,OPTION,DATA) ZW RESULT
> RESULT="^TMP("GMVUSER",539374023)"
> D ^%G
> Global ^TMP("GMVUSER",$J
> ^TMP("GMVUSER",539374023,0)=1^Parameter set.
```

If an error is encountered, a "-1" followed by a caret and the error message text (i.e., -1^error message) is returned.

2) When the OPTION value is GETPAR, this RPC will return the value of the GMV USER DEFAULTS setting specified in the DATA value.

The DATA value is a one part value. It is the name of a setting (e.g., the user's default template).

The TMP global contains:

```
^TMP("GMVUSER",$J,0)=value of setting or null
```

Example:

Exported Options

```
> S DATA="DefaultTemplate",OPTION="GETPAR"  
> D RPC^GMVPCU(.RESULT,OPTION,DATA) ZW RESULT  
> RESULT="^TMP("GMVUSER",539374023)"  
> D ^%G  
> Global ^TMP("GMVUSER", $J  
> ^TMP("GMVUSER",539374023,0)=547;VA(200,|ONE VITAL TYPE ONLY|
```

3) When the OPTION value is SIGNON, this RPC will return information about the user who is currently signed onto the system.

The DATA value is not used. The user's IEN (i.e., DUZ) to the NEW PERSON (#200) file value must be defined when this call is made.

The RESULT variable will return the following array:

```
RESULT(0)=NEW PERSON (#200) file internal entry number (DUZ)  
RESULT(1)=User's name (FILE 200, Field .01)  
RESULT(2)=Domain (FILE 4.2) internal entry number  
RESULT(3)=Domain name (FILE 4.2, Field .01)  
RESULT(4)=Institution (FILE 4) internal entry number the user is signed  
into (i.e., DUZ(2))  
RESULT(5)=Institution name (FILE 4, Field .01)  
RESULT(6)="0" or "1". "1" indicates the user has the GMV MANAGER or  
programmer key. "0" indicates the user has neither key.  
RESULT(7)=The user's title (FILE 200, Field 8)  
RESULT(8)=This value is always null.  
RESULT(9)=Number of seconds the system will wait for a response from  
the user (i.e., DTIME). The default time is 300 seconds.  
RESULT(10)=INSTITUTION (#4) file IEN^FILE 4 external value^station  
number (e.g., 499^SUPPORT ISC^499).
```

Example:

```
> S OPTION="SIGNON"  
> D RPC(.RESULT,OPTION) ZW RESULT  
> RESULT="^TMP("GMVUSER",539375907)"  
> D ^%G  
> Global ^TMP("GMVUSER", $J  
> ^TMP("GMVUSER",539375907,0)=547  
1)=VITUSER,ONE  
2)=334  
3)=DEV.DEV.FO-HINES.MED.VA.GOV  
4)=499  
5)=SUPPORT ISC  
6)=1  
7)=PROGRAMMER  
8)=  
9)=9999  
10)=499^SUPPORT ISC^499
```

¹NAME: **GMV V/M ALLDATA** TAG: VMDATA
ROUTINE: GMVGGRR1 RETURN VALUE TYPE: GLOBAL ARRAY
AVAILABILITY: SUBSCRIPTION INACTIVE: ACTIVE
WORD WRAP ON: TRUE
DESCRIPTION:
This remote procedure call lists all vitals/measurements data for a given date/time span.

¹ Patch GMRV*5.0*23 September 2009 Updated routine description.

This remote procedure call is documented in Integration Agreement 4654.

```
INPUT PARAMETER: GMVDATA           PARAMETER TYPE: LITERAL
  MAXIMUM DATA LENGTH: 60         REQUIRED: YES
  SEQUENCE NUMBER: 1
DESCRIPTION:
GMVDATA consists of 4 pieces of data:
```

```
piece1^piece2^piece3^piece4
```

```
where piece1 = File 2 IEN (i.e., DFN)
      piece2 = Start date/time for search (FileMan internal format)
      piece3 = End date/time for search (FileMan internal format)
      piece4 = 0 (zero)
```

```
RETURN PARAMETER DESCRIPTION:
RESULT array returns the data or a "NO DATA" message.
```

Case A: The NO DATA message is returned.

The TMP global returns:

```
^TMP($J,1)=lastname,first social security number date of birth age
             "(Yrs)" gender
^TMP($J,2)="Unit:" unit "Room:" room
^TMP($J,3)="Division:" division
^TMP($J,4)= search date range
^TMP($J,5)="NO DATA"
```

Example:

```
> S GMVDATA="90^3051012^3051012^0"
> D VMDATA^GMVGGR1(.RESULT,GMVDATA) ZW RESULT
> RESULT="^TMP(539349605)"
> D ^%G
> Global ^TMP($J
> ^TMP(539349605,1)=VITPATIENT,ONE 000-11-1234 JAN 2,1934 71 (Yrs)
      MALE
      2)=Unit:    Room:
      3)=Division:
      4)=OCT 11,2005 - OCT 11,2005
      5)=NO DATA
```

Case B: Fourth piece of GMVDATA (Flag) is 0

The TMP global returns:

```
^TMP($J,1)=lastname,first social security number date of birth age
             "(Yrs)" sex
^TMP($J,2)="Unit:" unit "Room:" room
^TMP($J,3)="Division:" division
^TMP($J,4)= search date range
^TMP($J,n)=piece1 through piece23
```

```
where piece1 = date of reading in mm-dd-yy format
      piece2 = time of reading in hh:mm:ss format
      piece3 = Temperature value and qualifier abbreviations
      piece4 = Pulse value and qualifier abbreviations
      piece5 = Respiration and qualifier abbreviations
      piece6 = Pulse Oximetry value, qualifier abbreviations, flow rate
              and percentage value
      piece7 = Blood Pressure value and qualifier abbreviations
      piece8 = Weight value (pounds) and qualifier abbreviations
      piece9 = Weight value (kilos)
```

Exported Options

```
piece10 = Body Mass Index calculation
piece11 = Height value (inches) and qualifier abbreviations
piece12 = Height value (centimeters)
piece13 = Circumference Girth value (inches) and qualifier
abbreviations
piece14 = Circumference Girth value (centimeters)
piece15 = Central Venous Pressure value (cmH2O)
piece16 = Central Venous Pressure value (mmHg)
piece17 = Input value (from Intake & Output package)
piece18 = Output value (from Intake & Output package)
piece19 = Pain value
piece20 = always null
piece21 = always null
piece22 = hospital location (FILE 44, Field .01)
piece23 = name of person who entered the data (FILE 200, Field .01)
piece24 = database where the record is stored
```

Example:

```
> S GMVDATA="134^3050901^3050930^0"
> D VMDATA^GMVGGRI(.RESULT,GMVDATA) ZW RESULT
> RESULT="^TMP(539349605)"
> D ^%G
> Global ^TMP($J
> ^TMP(539349605,1)=VITPATIENT,TWO 000-11-1234 JUN 1,1957 48 (Yrs)
FEMALE
2)=Unit: 2-ASM Room:
3)=Division: TEST HINES
4)=SEP 1,2005 - SEP 30,2005
5)=09-14-05^17:18:00^^^^^^135- A St^61.36^22^66-
A^167.64^^^^^^^ ^2-ASM^VITPROVIDER,ONE^Vitals
6)=09-26-05^11:30:57^^^^^^120/80*- La Si Car
Clf^^^^^^^^^^^^^^^2-A SM^VITPROVIDER,TWO^Vitals.
```

```
NAME: GMV VITALS/CAT/QUAL TAG: GETVITAL
ROUTINE: GMVUTL7 RETURN VALUE TYPE: ARRAY
AVAILABILITY: SUBSCRIPTION INACTIVE: ACTIVE
WORD WRAP ON: TRUE
```

¹DESCRIPTION:

Returns all qualifier information for the vital types selected.

This remote procedure call is documented in Integration Agreement 4359.

```
INPUT PARAMETER: GMVLIST PARAMETER TYPE: LITERAL
MAXIMUM DATA LENGTH: 60 REQUIRED: YES
SEQUENCE NUMBER: 1
```

DESCRIPTION:

A list of vital type abbreviations (FILE 120.51, Field 1) separated by up-arrows (e.g., "HT^WT" for height and weight). When the value is null, all qualifier information will be returned for all vital types.

RETURN PARAMETER DESCRIPTION:

Returns the qualifier information for the selected vital types in the array specified. Includes the abnormal high and low values for the vital type, if any.

The result array contains:

```
RESULT(n)=piece1^piece2^piece3^piece4^piece5^piece6^piece7^piece8^piece9
RESULT(n.nnn)=pieceA^pieceB^pieceC^pieceD
```

where n is a sequential number starting with 1

¹ April 2006 Patch GMRV*5.0*3 Updated the routine description.


```

piece1 = V for vital type
piece2 = FILE 120.51 IEN for this vital type
piece3 = vital type name (FILE 120.51, Field .01)
piece4 = Abbreviation (FILE 120.51, Field 1)
piece5 = PCE Abbreviation (FILE 120.51, Field 7)
piece6 = If vital type is Blood Pressure this is the
         abnormal systolic high value (File 120.57, Field 5.7).
         If vital type is Temperature, this is the abnormal high
         value (File 120.57, Field 5.1)
         If vital type is Respiration, this is the abnormal high
         value (File 120.57, Field 5.5)
         If vital type is Pulse, this is the abnormal high value
         (File 120.57, Field 5.3)
         If vital type is Central Venous Pressure, this is the
         abnormal high value (File 120.57, Field 6.1)
piece7 = If vital type is Blood Pressure this is the
         abnormal diastolic high value (File 120.57, Field 5.71).
         If vital type is Temperature, this is the abnormal low
         value (File 120.57, Field 5.2)
         If vital type is Respiration, this is the abnormal low
         value (File 120.57, Field 5.6)
         If vital type is Pulse, this is the abnormal low value
         (File 120.57, Field 5.4)
         If vital type is Central Venous Pressure, this is the
         abnormal low value (File 120.57, Field 6.2)
piece8 = If vital type is Blood Pressure this is the
         abnormal systolic low value (File 120.57, Field 5.8).
         If vital type is Central Pressure, this is the abnormal
         O2 saturation (File 120.57, Field 6.3)
piece9 = If vital type is Blood Pressure this is the
         abnormal diastolic low value (File 120.57, Field 5.81).

```

```

RESULT(n.nnn)=pieceA^pieceB^pieceC^pieceD
where pieceA = C for CATEGORY or Q for QUALIFIER

if pieceA is C, then
  pieceB = FILE 120.53 IEN for this category
  pieceC = category name (FILE 120.53, Field .01)
  pieceD = null

if pieceB is Q, then
  pieceB = FILE 120.52 IEN for this qualifier
  pieceC = qualifier name (FILE 120.52, Field .01)
  pieceD = synonym (FILE 120.52, Field .02)

```

Example:

```

> S GMVLIST="HT^WT"
> D GETVITAL^GMVUTL7(.RESULT,GMVLIST) ZW RESULT
> RESULT(1)="V^8^HEIGHT^HT^HT^"
> RESULT(1.001)="C^4^QUALITY"
> RESULT(1.002)="Q^42^ACTUAL^A"
> RESULT(1.003)="Q^43^ESTIMATED^E"
> RESULT(1.004)="Q^107^Stated^St"
> RESULT(2)="V^9^WEIGHT^WT^WT^"
> RESULT(2.001)="C^2^METHOD"
> RESULT(2.002)="Q^39^OTHER^Oth"
> RESULT(2.003)="Q^50^SITTING^Si"
> RESULT(2.004)="Q^51^STANDING^St"
> RESULT(2.005)="C^4^QUALITY"
> RESULT(2.006)="Q^42^ACTUAL^A"

```

Exported Options

NAME: **GMV WARD LOCATION** TAG: WARDLOC
ROUTINE: GMVGETD RETURN VALUE TYPE: GLOBAL ARRAY
AVAILABILITY: RESTRICTED INACTIVE: ACTIVE
WORD WRAP ON: TRUE

¹DESCRIPTION:

This procedure extracts MAS ward locations from the Ward Location file (#42).

INPUT PARAMETER: DUMMY PARAMETER TYPE: LITERAL
MAXIMUM DATA LENGTH: 1 REQUIRED: NO
SEQUENCE NUMBER: 1

DESCRIPTION:

When this input parameter is set to the letter "P", only wards that have patients will be returned. Otherwise, all active wards will be returned.

RETURN PARAMETER DESCRIPTION:

Returns the global array name containing a list of MAS wards (i.e., ^TMP(\$J,"GWARD")).

^TMP(\$J,"GWARD",n)=piece1^piece2^piece3

where:

piece1 = ward IEN (FILE 42)
piece2 = ward name (FILE 42, Field .01)
piece3 = hospital location IEN (FILE 44)
n is a sequential number starting at 1.

Example:

```
> S DUMMY="P"  
> D WARDLOC^GMVGETD(.RESULT,DUMMY) ZW RESULT  
> RESULT="^TMP(540221719,"GWARD")"  
> D ^%G  
> Global ^TMP($J,"GWARD"  
> ^TMP(540221719,"GWARD",1)=2^1AS^2  
2)=1^2-AS^1  
3)=13^2-ASM^67  
4)=25^214-2 DOM^149  
5)=3^3AS^128  
6)=4^4AS-1^4  
7)=22^4B^153  
8)=23^4C^155  
9)=24^4D^154  
10)=12^5NM^63  
11)=6^6AS^10  
12)=7^7AS^11  
13)=8^DOM^23  
14)=10^MICU^36  
15)=5^NHCU^5
```

NAME: **GMV WARD PT** TAG: WARDPT
ROUTINE: GMVGETD RETURN VALUE TYPE: GLOBAL ARRAY
AVAILABILITY: RESTRICTED INACTIVE: ACTIVE
WORD WRAP ON: TRUE

DESCRIPTION:

This procedure lists patients registered on a particular MAS ward.

INPUT PARAMETER: GMRWARD PARAMETER TYPE: LITERAL
MAXIMUM DATA LENGTH: 30 REQUIRED: YES
SEQUENCE NUMBER: 1

DESCRIPTION:

GMRWARD contains the name of ward from Ward Location file (#42).

RETURN PARAMETER DESCRIPTION:

¹ June 2008 Patch GMRV*5.0*22 Updated description.

Returns the name of the global array containing the list of patients on the selected ward (i.e., ^TMP(\$J,"GMRPT")).

```
^TMP($J,"GMRPT",n)=DFN^Name^SSN (w/hyphens)^DOB^Sex and Age^Attending^
Veteran^Date of Death (internal)^Date of Death
(external)^Ward name^Roombed
```

n is a sequential number starting at 1.

If there are no patients on the ward, then the global array is undefined.

NAME: GMV WARD/ROOM PATIENTS	TAG: ROOMPT
ROUTINE: GMVUTL7	RETURN VALUE TYPE: ARRAY
AVAILABILITY: RESTRICTED	INACTIVE: ACTIVE
¹ DESCRIPTION:	
Returns a list of patients in the ward and rooms specified.	
INPUT PARAMETER: GMVWRD	PARAMETER TYPE: LITERAL
MAXIMUM DATA LENGTH: 60	REQUIRED: YES
SEQUENCE NUMBER: 1	
DESCRIPTION:	
Name of the ward (e.g., 2EAST).	
INPUT PARAMETER: GMVRLST	PARAMETER TYPE: LITERAL
MAXIMUM DATA LENGTH: 150	REQUIRED: YES
SEQUENCE NUMBER: 2	
DESCRIPTION:	
The room numbers of the ward separated by comma (e.g., 200,210,220).	
RETURN PARAMETER DESCRIPTION:	
RESULT(n)=patient name^DFN^DOB (external)^SSN (no hyphens)	
where n is a sequential number beginning with 0 (zero)	

Menu Option by Name

² NAME: GMV V/M GUI
 MENU TEXT: Vitals/Measurements GUI Application
 TYPE: Broker (Client/Server)
 PACKAGE: GEN. MED. REC. - VITALS
 DESCRIPTION: This option controls access to the GUI Vitals/Measurements application.

RPC: GMV MANAGER
 RPC: GMV ADD VM
 RPC: GMV ALLERGY
 RPC: GMV CLINIC PT
 RPC: GMV CONVERT DATE
 RPC: GMV CUMULATIVE REPORT
 RPC: GMV ENTERED IN ERROR-PATIENT
 RPC: GMV EXTRACT REC
 RPC: GMV GET CURRENT TIME
 RPC: GMV LATEST VITALS BY LOCATION
 RPC: GMV LATEST VITALS FOR PATIENT
 RPC: GMV LATEST VM
 RPC: GMV MARK ERROR
 RPC: GMV PT GRAPH
 RPC: GMV PTSELECT
 RPC: GMV QUALIFIER TABLE
 RPC: GMV ROOM/BED
 RPC: GMV TEAM PATIENTS

¹ April 2006 Patch GMRV*5.0*3 Updated the routine description.

² September 2009 Patch GMRV*5.0*23 Updated Menu Option By Name list.

Exported Options

RPC: GMV V/M ALLDATA
RPC: GMV VITALS/CAT/QUAL
RPC: GMV WARD LOCATION
RPC: GMV WARD PT
RPC: GMV WARD/ROOM PATIENTS
RPC: GMV USER
RPC: GMV NUR UNIT PT
RPC: GMV CHECK DEVICE
RPC: GMV PARAMETER
RPC: ORWPT PTINQ
RPC: GMV GET CATEGORY IEN
RPC: GMV GET VITAL TYPE IEN
RPC: VAFCTFU CONVERT DFN TO ICN
RPC: VAFCTFU CONVERT ICN TO DFN
RPC: GMV DLL VERSION
RPC: GMV LOCATION SELECT
RPC: GMV CLOSEST READING
UPPERCASE MENU TEXT: VITALS/MEASUREMENTS GUI APPLIC

6. Archiving and Purging

¹No provisions for archiving or purging have been made for this release and none are planned for the future.

¹ Patch GMRV*5.0*23 September 2009 Removed archive/purge instructions.

This page intentionally left blank for double-side printing.

7. Callable Routines

There are no callable routines.

This page intentionally left blank for double-side printing.

8. External Relations

1. The following VistA applications must reside in the system before Vitals/Measurements, Version 5.0 can be installed:
 - a. VA FileMan V. 22 or greater,
 - b. Kernel V. 8.0 or greater,
 - c. Kernel Toolkit V. 7.3 or greater,
 - d. Kernel RPC Broker V. 1.1 or greater,
 - e. PIMS V. 5.3 or greater,
 - f. Intake and Output V. 4.0,
 - g. Health Summary V. 2.7 or greater,
 - h. Nursing V. 4.0 or greater.

2. ¹Interface Control Registrations (formerly known as Integration Agreements) between the Vitals/Measurements software and other VistA applications exist. Database Interface Control Registrations (DICR) are available on the DBA menu on Forum. For complete information regarding the DICRs for Vitals V. 5.0, please refer to the *Integration Control Registrations (Agreements) Menu* [DBA IA ISC] option under the *DBA* [DBA] option on FORUM.

The following screen capture shows one way to access the DBA option in FORUM:

```
Select Software Services Primary Menu Option: DBA MENU
```

```
NAME  NAMESPACE AND FILESPACE REGISTRATIONS ...
IAS   INTEGRATION CONTROL REGISTRATIONS ...
PKG   PACKAGE FILE INFORMATION ...
STN   INSTITUTION FILE INFORMATION ...
STND  STANDARDS ...
```

```
Select DBA MENU Option: IAS  INTEGRATION CONTROL REGISTRATIONS
```

```
HELP  Instructions for Entering ICRs
GET#  GET NEW Integration Control Registration #(s)
ADD   ADD/EDIT Pending Integration Control Registration
ROLL  Roll up ICR into Mail Message
FILE  File-type Integration Control Registrations Menu ...
ROU   Routine-type ICRs Menu ...
RPC   Remote Procedure Call-type ICRs Menu ...
OTH   Print 'Other'-type ICRs
SUPP  Supported References Menu ...
CONT  Controlled Subscription ICRs Menu ...
PRIV  Private ICRs Menu ...
CUST  Custodial Package Menu ...
INQ   Inquire to an Integration Control Registration
SUBS  Subscriber Package Menu ...
APIS  Supported API Report
VBLE  Lookup ICRs by Variable
PEND  Print ICRs in Pending Status
ACTV  Print Active ICRs
```

¹ Patch GMRV*5.0*23 September 2009 External Relations list removed and replaced with instructions on obtaining the information online. Integration Agreements renamed Interface Control Registrations.

External Relations

ALL Print ALL ICRs

Select INTEGRATION CONTROL REGISTRATIONS Option: CUST Custodial Package Menu

- 1 ACTIVE ICRs by Custodial Package
- 2 Print ALL ICRs by Custodial Package
- 3 Supported References Print All

Select Custodial Package Menu Option: 1 ACTIVE ICRs by Custodial Package

Select PACKAGE NAME: GMRV GEN. MED. REC. - VITALS GMRV National

DEVICE: HOME//

9. Internal Relations

The namespace used for version 5 is GMV.

```
12 NAME: GMV V/M GUI
  MENU TEXT: Vitals/Measurements GUI Application
  TYPE: Broker (Client/Server)
  PACKAGE: GEN. MED. REC. - VITALS
  DESCRIPTION: This option controls access to the GUI Vitals/Measurements
  application.
RPC: GMV MANAGER
RPC: GMV ADD VM
RPC: GMV ALLERGY
RPC: GMV CLINIC PT
RPC: GMV CONVERT DATE
RPC: GMV CUMULATIVE REPORT
RPC: GMV ENTERED IN ERROR-PATIENT
RPC: GMV EXTRACT REC
RPC: GMV GET CURRENT TIME
RPC: GMV LATEST VITALS BY LOCATION
RPC: GMV LATEST VITALS FOR PATIENT
RPC: GMV LATEST VM
RPC: GMV MARK ERROR
RPC: GMV PT GRAPH
RPC: GMV PTSELECT
RPC: GMV QUALIFIER TABLE
RPC: GMV ROOM/BED
RPC: GMV TEAM PATIENTS
RPC: GMV V/M ALLDATA
RPC: GMV VITALS/CAT/QUAL
RPC: GMV WARD LOCATION
RPC: GMV WARD PT
RPC: GMV WARD/ROOM PATIENTS
RPC: GMV USER
RPC: GMV NUR UNIT PT
RPC: GMV CHECK DEVICE
RPC: GMV PARAMETER
RPC: ORWPT PTINQ
RPC: GMV GET CATEGORY IEN
RPC: GMV GET VITAL TYPE IEN
RPC: VAFCTFU CONVERT DFN TO ICN
RPC: VAFCTFU CONVERT ICN TO DFN
RPC: GMV DLL VERSION
RPC: GMV LOCATION SELECT
RPC: GMV CLOSEST READING
  UPPERCASE MENU TEXT: VITALS/MEASUREMENTS GUI APPLIC
```

¹ September 2009 Patch GMRV*5.0*23 Updated list.

² Patch GMRV*5.0*23 September 2009 Removed reference to timestamp.

This page intentionally left blank for double-side printing.

10. Package-wide Variables

No package-wide variables are used in this application.

This page intentionally left blank for double-side printing.

11. SAC Exemptions

There is one SAC Exemption associated with this package.

VITALS/MEASUREMENTS

- 1 STANDARD SECTION: 1 ANSI
DATE GRANTED: JAN 25, 1996
Vitals/Measurements has been granted a SAC exemption to use the 1995 VA SAC #4.4.2.1 to use \$TEXT on a line that doesn't contain ;; to check for the existence of a routine.

This page intentionally left blank for double-side printing.

12. Software Product Security

Security Management

No additional security measures are to be applied. Vitals/Measurements uses the standard RPC broker log-in procedure to validate the user and allow access to the system.

No additional licenses are necessary to run the software.

Confidentiality of staff and patient data and the monitoring of this confidentiality is no different than with any other paper reference.

Security Features

a. Mail groups and alerts.

There are no mail groups or alerts associated with this software.

b. Remote systems.

Application data is transmitted to the ¹Health Data Repository (HDR).

c. Archiving/Purging.

Refer to the chapter on Archiving and Purging, in this manual.

d. Contingency Planning.

It is the responsibility of the using service to develop a local contingency plan to be used in the event of application problems.

e. Interfacing.

No specialized (non VA) interfaces are used or required by the application.

f. Electronic signatures.

Electronic signatures are not used by the application.

g. Menus.

There are no options of special note for the Information Security Officers (ISO's) to view.

¹ April 2006 Patch GMRV*5.0*3 Added HDR reference.

h. Security Keys.

There is one security key in this application, it is GMV MANAGER. This new key allows a user to view/create/edit all other user's templates in the Vitals module, without this key the user can only view/create/edit his/her own user templates. This key also allows a user to use (run) other user's templates in the Vitals application. This key is required to access the Vitals Manager module. This key should be assigned to the package coordinator.

i. File Security.

NUMBER	NAME	GLOBAL NAME	DD ACC	RD ACC	WR ACC	DEL ACC	LAY ACC	AUD ACC
120.5	GMRV VITAL MEASUREMENT	^GMR(120.5,	@		@	@	@	
120.51	GMRV VITAL TYPE	^GMRD(120.51,	@		@	@	@	@
120.52	GMRV VITAL QUALIFIER	^GMRD(120.52,	@		@	@	@	@
120.53	GMRV VITAL CATEGORY	^GMRD(120.53,	@		@	@	@	@
120.57	GMRV VITALS PARAMETERS	^GMRD(120.57,	@		@	@	@	

j. References.

There are no special reference materials for this package.

k. Official Policies.

There are no special official policies for this package.

13. ¹Glossary

Access Code A unique sequence of characters known by and assigned only to the user, the system manager and/or designated alternate(s). The access code (in conjunction with the verify code) is used by the computer to identify authorized users.

ADP Coordinator/ADPAC/Application Coordinator Automated Data Processing Application Coordinator. The person responsible for implementing a set of computer programs (application package) developed to support a specific functional area such as Nursing, PIMS, etc.

Application A system of computer programs and files that have been specifically developed to meet the requirements of a user or group of users. Examples of *VISTA* applications are the PIMS and Vitals/Measurements application.

Archive The process of moving data to some other storage medium, usually a magnetic disk, and deleting the information from active storage in order to free-up disk space on the system.

Backup Procedures The provisions made for the recovery of data files and program libraries and for restart or replacement of ADP equipment after the occurrence of a system failure.

BMI This is the patient's body mass index, which is calculated by dividing the person's weight in kilograms by the square of his height in meters.

Bulletin A canned message that is automatically sent by MailMan to a user when something happens to the database.

Contingency Plan A plan which assigns responsibility and defines procedures for use of the backup/restart/recovery and emergency preparedness procedures selected for the computer system based on risk analysis for that system.

Data Dictionary A description of file structure and data elements within a file.

Device A hardware input/output component of a computer system (e.g., CRT, printer).

Edit Used to change/modify data typically stored in a file.

Field A data element in a file.

File The M construct in which data is stored for retrieval at a later time. A group of related records.

¹ Patch GMRV*5.0*23 September 2009 Entire glossary updated..

File Manager or FileMan Within this manual, FileManager or FileMan is a reference to VA FileMan. FileMan is a set of M routines used to enter, edit, print, and sort/ search related data in a file; a data base.

Global An M term used when referring to a file stored on a storage medium, usually a magnetic disk. In the Vitals software, for example, vitals data is stored in one global, and patient data is stored in another global.

GMRV This signifies the General Medical Record namespace assigned to the Vitals/Measurements application.

GMRY This signifies the General Medical Record namespace assigned to the Intake and Output application.

GMV Vitals/Measurements namespace, parent package to GMRV.

GUI Graphical User Interface - a Windows-like screen that uses pull-down menus, icons, pointer devices, and other metaphor-type elements that can make a computer program more understandable, easier to use, allow multi-processing (more than one window or process available at once), etc.

I&O The Intake and Output application.

IRMS Information Resource Management Service.

Kernel A set of software utilities. These utilities provide data processing support for the application packages developed within the VA. They are also tools used in configuring the local computer site to meet the particular needs of the hospital. The components of this operating system include: MenuMan, TaskMan, Device Handler, Log-on/Security, and other specialized routines.

LAYGO An acronym for Learn As You Go. A technique used by VA FileMan to acquire new information as it goes about its normal procedure. It permits a user to add new data to a file.

M Formerly known as MUMPS or the Massachusetts (General Hospital) Utility Multi-Programming System. This is the programming language used to write all *VISTA* applications.

MailMan An electronic mail, teleconferencing, and networking system.

Menu A set of options or functions available to users for editing, formatting, generating reports, etc.

Module A component of the Vitals software application that covers a single topic or a small section of a broad topic.

Namespace A naming convention followed in the VA to identify various applications and to avoid collision between applications. It is used as a prefix for all routines and globals used by the application. The Vitals package uses GMV as its namespace.

OIFO Office of Information Field Office, formerly known as Information Resource Management Field Office, and Information Systems Center.

Option A functionality that is invoked by the user. The information defined in the option is used to drive the menu system. Options are created, associated with others on menus, or given entry/exit actions. For example, the GMV V/M GUI is the main menu for the Vitals/Measurements application.

Package Otherwise known as an application. A set of M routines, files, documentation and installation procedures that support a specific function within *VISTA* (e.g., the ADT and Vitals/Measurements applications).

Password A protected word or string of characters that identifies or authenticates a user, a specific resource, or an access type (synonymous with Verify Code).

PIMS Patient Information Management System previously known as the MAS Package.

Pointer A special data type of VA FileMan that takes its value from another file. This is a method of joining files together and avoiding duplication of information.

Program A set of M commands and arguments, created, stored, and retrieved as a single unit in M.

Protocol A single entry point referencing multiple routine entry points to execute several inter related, required processes which perform specific functions. When multiple protocols are associated with a single procedure (i.e., intravenous lines or IV lines), they are found grouped under a single option.

Qualifier A word that gives a more detailed description of an item.

Queuing The scheduling of a process/task to occur at a later time. Queuing is normally done if a task uses up a lot of computer resources.

<RET> Carriage return.

Routine A set of M commands and arguments, created, stored, and retrieved as a single unit in M.

Security Key A function which unlocks specific options and makes them accessible to an authorized user.

Sensitive Information Any information which requires a degree of protection and which should be made available only to authorized users.

Site Configurable A term used to refer to features in the system that can be modified to meet the needs of each site.

Software A generic term referring to a related set of computer programs.

Synonym A qualifier abbreviation appended to vitals/measurements numeric values on graphic reports.

Task Manager or TaskMan A part of Kernel which allows programs or functions to begin at specified times or when devices become available. See Queuing.

User A person who enters and/or retrieves data in a system, usually utilizing a CRT.

Utility An M program that assists in the development and/or maintenance of a computer system.

Verify Code A unique security code which serves as a second level of security access. Use of this code is site specific; sometimes used interchangeably with a password.

VISTA Veterans Health Information Systems and Technology Architecture.

Vital Type A category of vital sign or measurement (e.g., pulse, respiration, blood pressure, temperature).

Workstation A personal computer running the Windows 9x or NT operating system.

14. Appendix A – Parameter Settings¹

This table contains a list of parameter settings used by the Vitals/Measurement Standalone and Vitals Lite Graphical User Interfaces (GUIs).

Note: The GUIs use these parameter settings to start the software. When a GUI is open and the user changes the settings (e.g., checks a checkbox) that change works immediately in the GUI, but the parameter setting is not saved to the server until the user exits the GUI. If you are trying to debug a problem and have a GUI and a Mumps session open with the parameter settings showing at the same time, you will not see the parameter settings change until you close the GUI.

How can you see these parameter settings on the server?

Example:

```
>D ^XPAREdit
```

```
--- Edit Parameter Values ---
```

```
Select PARAMETER DEFINITION NAME: GMV<return>
```

- 1 GMV ALLOW USER TEMPLATES Allow individual user templates
- 2 GMV DEFAULT VALUES ENTER GMV DEFAULTS
- 3 GMV DLL VERSION Vitals DLL version check
- 4 GMV GUI VERSION Active Vitals Measurements executables
- 5 GMV TEMPLATE Templates for vitals V5

```
Press <RETURN> to see more, '^' to exit this list, OR
```

```
CHOOSE 1-5: <return>
```

- 6 GMV TEMPLATE DEFAULT Default Templates for vitals V5
- 7 GMV USER DEFAULTS GMV User Defaults
- 8 GMV WEBLINK Vitals Measurements Home Page

```
CHOOSE 1-8: 7
```

```
Select NEW PERSON NAME: LASTNAME,FIRST <return>
```

```
----- Setting GMV USER DEFAULTS for User: LASTNAME,FIRST -----
```

```
Select Parameter setting: ?<return>
```

Parameter setting	Value
ABNORMALBGCOLOR	15
ABNORMALBOLD	OFF
ABNORMALQUALIFIERS	ON
ABNORMALTEXTCOLOR	9
CLINIC_INDEX	9
CPRSMetricStyle	CPRSMetricStyle
CanvasAbnormal	15;9;0;1;15

¹ Patch GMRV*5.0*23 September 2009 Added Appendix A – Parameter Settings

```

CanvasNormal          15;0;0;1;15;15388544;15388544;ORWPT PTINQ
CloseInputWindowAfterSave  DoNotCloseInputWindow
ConversionWarningStatus  OFF
DefaultTemplate        547;VA(200),full list
GRAPH_OPTIONS_VISIBLE   0
GRAPHCOLOR             16777215
GRAPHOPTIONS           OFF
GRAPHOPTIONS-1         OFF
GRAPHOPTIONS-2         OFF
GRAPHOPTIONS-3         OFF
GRAPHOPTIONS-4         ON
GRAPH_INDEX            3
    
```

Enter RETURN to continue or '^' to exit:

Parameter Name	Example	Explanation
ABNORMALBGCOLOR	15	A number that represents the data grid background color for abnormal values. There are 16 colors to choose from. 0 - Black 1 - Maroon 2 - Green 3 - Olive 4 - Navy 5 - Purple 6 - Teal 7 - Gray 8 - Silver 9 - Red 10 - Lime 11 - Yellow 12 - Blue 13 - Fuchsia 14 - Aqua 15 - White
ABNORMALBOLD	ON or OFF	ON means the abnormal values appear in bold font. OFF means the abnormal values appear in regular font.
ABNORMALQUALIFIERS	ON or OFF	ON means the qualifiers are shown on the data grid for abnormal values. OFF means they are not shown for abnormal values.
ABNORMALTEXTCOLOR	0 through 15	The number that represents the text color for abnormal values shown in the data grid. (See the list above.)

CLINIC_INDEX	1	An RPC returns an array with the list of clinics to select from. This number indicates the array node of the clinic selected. It is “-1” if no clinic was ever selected.
CPRSMetricStyle	CPRSMetricStyle or VitalsMetricStyle	When the “Units as Drop Down List” checkbox in the “Enter Vitals” window is checked this value is “CPRSMetricStyle”. If it is not checked the value is “VitalsMetricStyle”.
CanvasAbnormal	15;9;0;1;15	<p>User preferences for abnormal values. Set from File User Options Values Display tab.</p> <p>1st value (e.g., 15) - Color of the background. Same as ABNORMALBGCOLOR.</p> <p>2nd value (e.g., 9) - Color of the text. Same as ABNORMALTEXTCOLOR.</p> <p>3rd value (e.g., 0) - Show text in bold font. Same as ABNORMALBOLD.</p> <p>4th value (e.g., 1) - Show qualifiers. Same as ABNORMAL QUALIFIERS.</p> <p>5th value (e.g. 15) - Background color for today’s values. Not currently used. User cannot set this value.</p>
CanvasNormal	15;0;0;1;15;15388544;15388544;ORWPT PTINQ	<p>User preferences for normal values. Set from File User Options Values Display tab.</p> <p>1st value (e.g., 15) - Color of the background. Same as NORMALBGCOLOR.</p> <p>2nd value (e.g., 0) - Color of the text. Same as NORMALTEXTCOLOR.</p> <p>3rd value (e.g., 0) - Show text in bold font. Same as NORMALBOLD.</p> <p>4th value (e.g., 1) - Show qualifiers. Same as NORMALQUALIFIERS.</p> <p>5th value (e.g., 15) - Background color for today’s values. Not currently used. User cannot set this value.</p> <p>The following values are set by the software. The user cannot change them. These values control the File </p>

		Patient Inquiry display. 6 th value (e.g., 15388544) – Background color 7 th value (e.g., 15388544) – Text color 8 th value (e.g., ORWPT PTINQ) – RPC Name
DefaultTemplate	547;VA(200, full list	The input template selected by the user. In this example, the template belongs to user 547 in the NEW PERSON file (#200). The template name is “full list”.
GRAPH OPTIONS VISIBLE	0 or 1	1 means the “Values”, “Time Scale”, “3D” and “Allow Zoom” checkboxes are visible. 0 means they are hidden. This parameter is set from the Vitals Lite GUI.
GRAPHCOLOR	16777215	The code for the background color for the data graph. There are too many colors to list.
GRAPHOPTIONS	ON or OFF	The “Show/Hide Graph Option” controls a panel that contains the “Values”, “3D”, “Allow Zoom” and “Time Scale” checkboxes. ON means the panel will be displayed to the user. OFF means it will be hidden from view. Same as the GRAPH OPTIONS VISIBLE parameter but is set from the Vitals Standalone GUI.
GRAPHOPTIONS-1	ON or OFF	ON means the “Values” checkbox has a checkmark. OFF means it is blank.
GRAPHOPTIONS-2	ON or OFF	ON means the “3D” checkbox has a checkmark. OFF means it is blank.
GRAPHOPTIONS-3	ON or OFF	ON means the “Allow Zoom” checkbox has a checkmark. OFF means it is blank.
GRAPHOPTIONS-4	ON or OFF	ON means the “Time Scale” checkbox has a checkmark. OFF means it is blank.
GRAPH_INDEX	0	A number to indicate the vital type(s) that appear on the data graph. 0 – Temperature 1 – Pulse 2 – Respiration

		<p>3 – B/P 4 – Pulse Ox 5 – Height 6 – Weight 7 – BMI 8 - Pain 9 – Height/Weight 10 - TPR 11 – B/P - Weight 12 – C/G 13 – CVP 14 – Intake 15 – Output</p>
GRIDSIZE	212	Width in pixels of the data grid.
GridDateRange	12	<p>Date Range selection. Default value is 12 (Two Years). 0 – Today 1 – T-1 2 – T-2 3 – T-3 4 – T-4 5 – T-5 6 – T-6 7 – T-7 8 – T-8 9 – T-9 10 – Six Months 11 – One Year 12 – Two Years 13 – All Results 14 – Date Range</p>
LastVitalsListHeight	130	Height in pixels of the “Latest vitals on file for this patient” portion of the “Enter Vitals’ window.
NORMALBGCOLOR	0 through 15	The background color for the normal values in the data grid. (See the list above.)
NORMALBOLD	ON or OFF	ON means the normal values appear in the bold font. OFF means the normal values appear in regular font.
NORMALQUALIFIERS	ON or OFF	ON means the qualifiers are shown on the data grid for normal values. OFF means they are not shown for normal values.
NORMALTEXTCOLOR	0 through 15	The number that represents the text

		color for normal values shown in the data grid. (See the list above.)
OneUnavailalbeBox		Not currently used. May be used in the future.
ParamTreeWidth	211	Width in pixels of the “Templates” portion of the “Enter Vitals” window.
RefuseStatus	ON or OFF	ON means the “Enable R” checkbox in “Enter Vitals” window is checked. OFF means it is not checked.
SELECTOR_TAB	4	A number that indicates which patient selector tab is selected. 0 – Unit 1 – Ward 2 – Team 3 – Clinic 4 – All
SearchDelay	1.0	Indicates the number of seconds the software will wait before trying to automatically look up a patient name using the characters entered by the user. Set by the user in: File User Options Search Delay tab.
ShowLastVitals	ShowLastVitals or NoLatest Vitals	Show or hide the values for the “Latest vitals on file for this patient” portion of the “Enter Vitals” window.
ShowTemplates	ShowTemplates or NoTemplates	“ShowTemplates” means that the “Template” list in the “Enter Vitals” window is shown. “NoTemplates” means it is hidden.
TEAM_INDEX	-1	An RPC returns an array with the list of teams to select from. This number indicates the array node of the team selected. It is “-1” if no team was ever selected.
TfrmGMV_InputLite	800;600;-4;-4;808;574;0	Parameters of the Vitals Standalone (EXE) window. 1 st value (e.g., 800) – User’s Windows screen resolution (width) 2 nd value (e.g., 600) – User’s Windows screen resolution (height) 3 rd value (e.g., -4) – Position of the left side of the window 4 th value (e.g., -4) – Position of the top side of the window 5 th value (e.g., 808) – Width in pixels

		of the window 6 th value (e.g., 574) – Height in pixels of the window 7 th value (e.g., 0) – Not currently used. Cannot be set by the user.
UNIT_INDEX	7	An RPC returns an array with the list of (nursing) units to select from. This number indicates the array node of the unit selected. It is “-1” if no unit was ever selected.
UnavailableStatus	ON or OFF	ON means the “Enable U” checkbox in “Enter Vitals” window is checked. OFF means it is not checked.
VIEW-HEIGHT	566	The height in pixels for the Vitals Lite (DLL) View window.
VIEW-LEFT	59	The pixel location for the left side of the Vitals Lite (DLL).View window.
VIEW-TOP	0	The pixel location for the top of the Vitals Lite (DLL) View window.
VIEW-WIDTH	741	The width in pixels for the Vitals Lite (DLL) View window.
VitalsLite	800;600;0;0;800;566;0	Parameters of the Vitals Lite (DLL) window. 1 st value (e.g., 800) – User’s Windows screen resolution (width) 2 nd value (e.g., 600) – User’s Windows screen resolution (height) 3 rd value (e.g., 0) – Position of the left side of the window 4 th value (e.g., 0) – Position of the top side of the window 5 th value (e.g., 800) – Width in pixels of the window 6 th value (e.g., 566) – Height in pixels of the window 7 th value (e.g., 0) – Not currently used. Cannot be set by the user.
WARD_INDEX	6	An RPC returns an array with the list of wards to select from. This number indicates the array node of the ward selected. It is “-1” if no ward was ever selected.