



**Automated Safety Incident Surveillance
Tracking System (ASISTS) V. 2.0**

Graphical User Interface (GUI)

Installation Guide

June 2002

(Revised January 2009)

Department of Veterans Affairs
Office of Enterprise Development
Management & Financial Systems

Revision History

Date	Description (Patch # if applicable)	Project Manager	Technical Writer
01/06/09	Enhancements from Patch OOPS*2*18 – Checksums, GUI Client Install	Richard Muller	Lynn Howell, author Corinne Bailey
06/2002	Initial Version		Charlie Wilbur

Revision History

Table of Contents

1	Introduction.....	1
1.1	Purpose.....	1
1.2	Scope.....	1
1.3	Acronyms.....	1
2	Install Requirements	3
2.1	Package Integration.....	3
2.2	Server Requirements.....	3
2.3	Client Requirements.....	4
3	Server Installation	5
3.1	Server Instructions	5
3.1.1	Verify Checksums in the transport global	6
3.1.2	Back up all systems as deemed appropriate.....	6
3.2	Installation Example ASISTS 2. 0.....	7
3.3	ASISTS 2. 0 Checksums.....	12
4	Client Installation.....	15
4.1	RPC Broker and HOSTS file	15
4.2	ASISTS GUI Client Installation	18
4.2.1	Instructions.....	21

Table of Contents

1 Introduction

1.1 Purpose

The purpose of this Installation Guide is to provide details on the installation of the Automated Safety Incident Surveillance Tracking System (ASISTS) Graphical User Interface (GUI) software.

The intended audience of this document includes Technical Services and National VISTA Support.

1.2 Scope

ASISTS V. 2.0 is the first ASISTS release to provide a Graphical User Interface to the ASISTS application. It offers the current roll-n-scroll functionality in a well-organized and user-friendly GUI environment. The GUI design is consistent in look and feel with current Vista GUI applications. The intent of the new GUI version was to mimic the existing roll-n-scroll versions. With the exception of new reports, no new functionality has been added. See the Release Notes for further information.

ASISTS GUI offers the following features.

- The user will be able to access on line help for the software.
- The user will be able to print the following reports:
 - Log of Federal Occupational Injuries and Illness
 - Log of Needlestick Incidents
 - Accident Report Status
 - Report of Accident
 - Seven Different types of Incident Reports
 - Process CA1/CA2 forms

1.3 Acronyms

ASISTS	Automated Safety Incident Surveillance Tracking System
DOL	Department Of Labor
GUI	Graphical User Interface
HFS	Host File Server
IG	Installation Guide
RPC	Remote Procedure Call
VA	Department of Veterans Affairs
VISTA	Veterans Health Information Systems and Technology Architecture

2 Install Requirements

2.1 Package Integration

The following package versions (or higher) must be installed prior to loading this patch of ASISTS.

Kernel	8.0
ToolKit	7.3
RPC Broker	1.1
MailMan	7.1
VA FileMan	22.0
PAID	4.0

2.2 Server Requirements

Any site not currently running the ASISTS application and wishing to install ASISTS GUI need not install all previous ASISTS patches since it is a complete install.

After installation, every VistA user should be assigned (in their secondary menu) the OOPS GUI EMPLOYEE menu so that they may be able to file a workers' compensation claim using ASISTS GUI. This menu option must be assigned to every user, in addition to any menu(s) assigned from the list below, for ASISTS GUI to function properly.

Other menu options that should be assigned to the appropriate user in their secondary menu are as follows.

OOPS GUI EMPLOYEE HEALTH MENU	ASISTS GUI Employee Health Menu (Context)
OOPS GUI SAFETY OFFICER MENU	ASISTS GUI Safety Menu (Context)
OOPS GUI SUPERVISOR MENU	ASISTS GUI Supervisor Menu (Context)
OOPS GUI UNION MENU	ASISTS GUI Union Menu (Context)
OOPS GUI WORKERS' COMP MENU	ASISTS GUI Workers' Comp Menu (Context)

There are three items to consider when using ASISTS after the GUI version has been installed.

1. Any claim initiated using the roll-n-scroll version must be completed using the roll-n-scroll version. The reason for this is that portions of the claim are now filed at different times in the new GUI version. Therefore, toggling back and forth between the old and new version may cause claims to be incomplete and rejected when filing with DOL.
2. To prevent the above from occurring, it is strongly recommended that the roll-n-scroll menu options be removed from the users menu prior to assigning the new GUI menus.

3. If you are an integrated facility with a large number of claims (over 2500) **or** you anticipate running reports spanning large time periods, we recommend that the Kernel System Parameter, `BROKER ACTIVITY TIMEOUT` be set to 600. This will help prevent “connection to server” timeout errors that occur when large amounts of data are processed both on the client and server machines.

2.3 Client Requirements

This initial version of ASISTS GUI should be run in a test environment before installation on a production system.

To run this Delphi-based application, the following configuration is recommended.

- Intel Pentium 90 or higher (P166 recommended)
- Microsoft Windows 95, 98, NT 4.0, or Windows 2000
- Memory: 32MB of RAM (64MB or more recommended)
- Hard disk space: 8MB
- VGA or higher resolution monitor
- Mouse or other pointing device
- Networks supported: Any Microsoft Windows 95, 98, Windows NT, or Windows 2000 or higher compatible network

3 Server Installation

3.1 Server Instructions

This distribution contains a full package release of ASISTS. If the system you are installing into is not fully patched, it does not need to be. This distribution contains bug fixes to the roll-n-scroll as well as all functionality for ASISTS GUI and must be installed to run the ASISTS GUI and to implement the bug fixes in the ASISTS roll-n-scroll. The bug fixes to the ASISTS roll-n-scroll were implemented mainly to alleviate problems with the electronic transmission of claims to the Department of Labor until the GUI became fully integrated at all facilities.

We recommend that you install ASISTS V. 2.0 into a training or test account that is a mirror of your production account and test prior to installing in your production account.

A pre-installation routine is run that changes the .01 field in the ASIST DOL CAUSE OF INJURY CODE file (#2263.2); therefore, the global protection on this file must be set to allow sets and kills (RWP).

Instructions for loading the distribution for ASISTS V. 2.0.

Total time estimated for installation is less than 15 minutes.

NOTE: We recommend that you set your PC or terminal for scroll-back (with a large enough buffer size) and plan to run the installation to the screen. This will allow you to monitor the process and include the scrolling region data in the history log.

Select the option *Kernel Installation and Distribution System*, XPD MAIN. Choose the *Installation* option, followed by the option, *Load the distribution*. When prompted to enter a host file, enter OOPS2_0.KID, as shown in the following example:

```

>D ^XUP

Select OPTION NAME: XPD MAIN      Kernel Installation & Distribution System

      Edits and Distribution ...
      Utilities ...
      Installation ...

Select Kernel Installation & Distribution System Option: INstallation
  1      Load a Distribution
  2      Verify Checksums in Transport Global
  3      Print Transport Global
  4      Compare Transport Global to Current System
  5      Backup a Transport Global
  6      Install Package(s)
          Restart Install of Package(s)
          Unload a Distribution
Select Installation Option: 1 Load a Distribution
Enter a Host File: OOPS2_0.KID;1

KIDS Distribution saved on Feb 21, 2002@16:21:06
Comment: ASISTS - VERSION 2.0 built on 2/21/01

This Distribution contains Transport Globals for the following Package(s):
  OOPS 2.0
Distribution OK!

Want to Continue with Load? YES//
Loading Distribution...

  OOPS 2.0
Use INSTALL NAME: OOPS 2.0 to install this Distribution.

```

(Optional) Print a list of package components with the KIDS Build File Print option if you would like a complete listing of package components (e.g., files, routines, and options) exported with this software.

3.1.1 Verify Checksums in the transport global

Run the option Verify Checksums in Transport Global to verify that all routines have the correct checksum. If there are any discrepancies, do not run the Install Package(s) option. Instead, run the Unload a Distribution option to remove the Transport Global from your system. Log a NOIS and/or call the national Help Desk and report the problem.

3.1.2 Back up all systems as deemed appropriate

3.2 Installation Example ASISTS 2.0

Although no new mail groups have been added, since this is a complete package release we have included the mail groups. Someone will have to be assigned as the mail group coordinator. All existing mail groups will be left intact and existing members will not need to be re-added.

Note that the ASISTS roll-n-scroll menu options should be disabled when installing this release.

Select the option Kernel Installation and Distribution System, XPD MAIN. Choose the Installation option, followed by the option, Installation. When prompted to enter the install name, enter ASISTS 2.0 as shown below:

```
Select OPTION NAME: XPD MAIN      Kernel Installation & Distribution System
      Edits and Distribution ...
      Utilities ...
      Installation ...

Select Kernel Installation & Distribution System Option: Installation

 1      Load a Distribution
 2      Verify Checksums in Transport Global
 3      Print Transport Global
 4      Compare Transport Global to Current System
 5      Backup a Transport Global
 6      Install Package(s)
      Restart Install of Package(s)
      Unload a Distribution

Select Installation Option: 6  Install Package(s)
Select INSTALL NAME:  OOPS 2.0      Loaded from Distribution  2/27/02@14:45:54
      => ASISTS - VERSION 2.0 built on 2/21/01  ;Created on Feb 21, 2002@16:21:

This Distribution was loaded on Feb 27, 2002@14:45:54 with header of
      ASISTS - VERSION 2.0 built on 2/21/01  ;Created on Feb 21, 2002@16:21:06
      It consisted of the following Install(s):
      OOPS 2.0
Checking Install for Package OOPS 2.0

Install Questions for OOPS 2.0

Incoming Files:

 2260      ASISTS ACCIDENT REPORTING
Note:  You already have the 'ASISTS ACCIDENT REPORTING' File.

 2261      ASISTS CHARACTERIZATION OF INJURY  (including data)
Note:  You already have the 'ASISTS CHARACTERIZATION OF INJURY' File.
I will OVERWRITE your data with mine.

 2261.1    ASISTS DOL ANATOMICAL LOCATION CODES  (including data)☐
*BUT YOU ALREADY HAVE 'ASISTS BODY PARTS' AS FILE #2261.1!
```

Shall I write over your ASISTS BODY PARTS File? YES// **YES - respond yes**
I will OVERWRITE your data with mine.

2261.2 ASISTS CRITICAL TRACKING ISSUES (including data)
Note: You already have the 'ASISTS CRITICAL TRACKING ISSUES' File.
I will OVERWRITE your data with mine.

2261.3 ASISTS PERSONAL PROTECTIVE EQUIPMENT (including data)
Note: You already have the 'ASISTS PERSONAL PROTECTIVE EQUIPMENT' File.
I will OVERWRITE your data with mine.

2261.4 ASISTS SETTING OF INJURY (including data)
Note: You already have the 'ASISTS SETTING OF INJURY' File.
I will OVERWRITE your data with mine.

2261.5 ASISTS PURPOSE FOR USING SHARPS (including data)
Note: You already have the 'ASISTS PURPOSE FOR USING SHARPS' File.
I will OVERWRITE your data with mine.

2261.6 ASISTS OCCURRENCE OF SHARPS INJURY (including data)
Note: You already have the 'ASISTS OCCURRENCE OF SHARPS INJURY' File.
I will OVERWRITE your data with mine.

2261.7 ASISTS DEVICE/EQUIPMENT (including data)
Note: You already have the 'ASISTS DEVICE/EQUIPMENT' File.
I will OVERWRITE your data with mine.

2261.8 ASISTS RESULTS (including data)
Note: You already have the 'ASISTS RESULTS' File.
I will OVERWRITE your data with mine.

2261.9 ASISTS SAFETY CHARACTERISTICS (including data)
Note: You already have the 'ASISTS SAFETY CHARACTERISTICS' File.
I will OVERWRITE your data with mine.

2262 ASISTS SITE PARAMETER
Note: You already have the 'ASISTS SITE PARAMETER' File.

2262.1 ASISTS DOL DISTRICT OFFICE (including data)
Note: You already have the 'ASISTS DOL DISTRICT OFFICE' File.
I will OVERWRITE your data with mine.

2262.2 ASISTS DEVICE SIZE (including data)
Note: You already have the 'ASISTS DEVICE SIZE' File.
I will OVERWRITE your data with mine.

2262.3 ASISTS NEEDLESTICK BRANDS
Note: You already have the 'ASISTS NEEDLESTICK BRANDS' File.

2263 ASISTS DOL TYPE OF INJURY CODES (including data)
I will OVERWRITE your data with mine.

2263.1 ASISTS DOL SOURCE OF INJURY CODES (including data)
I will OVERWRITE your data with mine.

2263.2 ASISTS DOL CAUSE OF INJURY CODES (including data)
I will OVERWRITE your data with mine.

```

2263.3  ASISTS DOL NATURE OF INJURY CODES  (including data)
I will OVERWRITE your data with mine.

2263.5  ASISTS DOL PROVIDER TITLE  (including data)
I will OVERWRITE your data with mine.

2263.6  ASISTS OWCP CHARGEBACK CODES  (including data)
I will OVERWRITE your data with mine.

2263.7  ASISTS UNION INFORMATION

Incoming Mail Groups:

Enter the Coordinator for Mail Group 'OOPS SAFETY':  ENTER COORDINATOR NAME

Enter the Coordinator for Mail Group 'OOPS INJURY':  ENTER COORDINATOR NAME

Enter the Coordinator for Mail Group 'OOPS EH':      ENTER COORDINATOR NAME

Enter the Coordinator for Mail Group 'OOPS UNION':   ENTER COORDINATOR NAME

Enter the Coordinator for Mail Group 'OOPS NDB MESSAGES': ENTER COORDINATOR NAME

Enter the Coordinator for Mail Group 'OOPS WCP':    ENTER COORDINATOR NAME

Enter the Coordinator for Mail Group 'OOPS WC MESSAGE': ENTER COORDINATOR NAME

Want KIDS to INHIBIT LOGONS during the install? YES// NO

Want to DISABLE Scheduled Options, Menu Options, and Protocols? YES// YES
When prompted to select the options you would like to place out of order, enter the
following:

ASISTS Employee Menu           OOPS EMP MENU
ASISTS Employee Health Menu    OOPS EMP HEALTH MENU
ASISTS Safety Officers Menu     OOPS SAFETY MENU
ASISTS Supervisor Menu         OOPS SUP MENU
ASISTS Union Menu              OOPS UNION MENU
ASISTS Worker's Compensation Menu OOPS WORKER'S COMP MENU

Enter the Device you want to print the Install messages.
You can queue the install by enter a 'Q' at the device prompt.
Enter a '^' to abort the install.

DEVICE: HOME// Enter - We recommend that you print this to the screen so that you
can monitor the progress

```

ASISTS Install Print Example

```

Select OPTION NAME: XPD MAIN          Kernel Installation & Distribution System

    Edits and Distribution ...
    Utilities ...
    Installation ...

Select Kernel Installation & Distribution System Option: UT  Utilities

    Build File Print
    Install File Print
    Convert Loaded Package for Redistribution
    Display Patches for a Package
    Purge Build or Install Files
    Rollup Patches into a Build
    Update Routine File
    Verify a Build
    Verify Package Integrity

Select Utilities Option: INStall File Print
Select INSTALL NAME:   OOPS 2.0      Install Completed  2/28/02@16:05:03
    => ASISTS - VERSION 2.0 built on 2/21/01  ;Created on Feb 21, 2002@16:21:
DEVICE: HOME//      UCX/TELNET

STATUS: Install Completed                DATE LOADED: FEB 12, 2002@15:57:26
INSTALLED BY: ASISTS,PROGRAMMER
NATIONAL PACKAGE: ASISTS

INSTALL STARTED: FEB 28, 2002@16:00:06      16:05:03          0:04:57

ROUTINES:                                16:00:26          0:00:20

PRE-INIT CHECK POINTS:
XPD PREINSTALL STARTED                    16:00:29          0:00:03
XPD PREINSTALL COMPLETED                 16:00:29

FILES:
ASISTS ACCIDENT REPORTING                 16:01:11          0:00:42
ASISTS CHARACTERIZATION OF INJURY         16:01:12          0:00:01
ASISTS DOL ANATOMICAL LOCATION CODES     16:01:13          0:00:01
ASISTS CRITICAL TRACKING ISSUES           16:01:14          0:00:01
ASISTS PERSONAL PROTECTIVE EQUIPMENT      16:01:15          0:00:01
ASISTS SETTING OF INJURY                  16:01:16          0:00:01
ASISTS PURPOSE FOR USING SHARPS           16:01:16
ASISTS OCCURRENCE OF SHARPS INJURY        16:01:17          0:00:01
ASISTS DEVICE/EQUIPMENT                   16:01:18          0:00:01
ASISTS RESULTS                            16:01:19          0:00:01
ASISTS SAFETY CHARACTERISTICS             16:01:21          0:00:02
ASISTS SITE PARAMETER                     16:01:24          0:00:03
ASISTS DOL DISTRICT OFFICE                16:01:24
ASISTS DEVICE SIZE                        16:01:25          0:00:01
ASISTS NEEDLESTICK BRANDS                 16:01:26          0:00:01
ASISTS DOL TYPE OF INJURY CODES           16:01:28          0:00:02
ASISTS DOL SOURCE OF INJURY CODES         16:01:29          0:00:01
ASISTS DOL CAUSE OF INJURY CODES          16:01:31          0:00:02
ASISTS DOL NATURE OF INJURY CODES         16:01:32          0:00:01
ASISTS DOL PROVIDER TITLE                 16:01:36          0:00:01
ASISTS OWCP CHARGEBACK CODES              16:01:36
ASISTS UNION INFORMATION                   16:01:39          0:00:03
    
```


ASISTS Install Print Example, cont.

```

BULLETIN                16:04:05                0:02:26
SECURITY KEY             16:04:06                0:00:01
MAIL GROUP               16:04:08                0:00:02
REMOTE PROCEDURE        16:04:15                0:00:07
OPTION                   16:04:57                0:00:42

INSTALL QUESTION PROMPT                                ANSWER

XPF2261.1#1  Shall I write over your ASISTS BODY PARTS File      YES
XPM187#1    Enter the Coordinator for Mail Group 'OOPS SAFETY'    ASISTSEMP,ONE
XPM188#1    Enter the Coordinator for Mail Group 'OOPS INJURY'    ASISTSEMP,ONE
XPM189#1    Enter the Coordinator for Mail Group 'OOPS EH'        ASISTSEMP,ONE
XPM190#1    Enter the Coordinator for Mail Group 'OOPS UNION'     ASISTSEMP,ONE
XPM234#1    Enter the Coordinator for Mail Group 'OOPS NDB MESSAGES' ASISTSEMP,ONE
XPM272#1    Enter the Coordinator for Mail Group 'OOPS WCP'       ASISTSEMP,ONE
XPM273#1    Enter the Coordinator for Mail Group 'OOPS WC MESSAGE' ASISTSEMP,ONE
XPO1  Want KIDS to Rebuild Menu Trees Upon Completion of Install  NO
XPI1  Want KIDS to INHIBIT LOGONS during the install              NO
XPZ1  Want to DISABLE Scheduled Options, Menu Options, and Protocols YES
MESSAGES:

Install Started for OOPS 2.0 :
      Feb 28, 2002@16:00:06

Build Distribution Date: Feb 21, 2002

Installing Routines:
      Feb 28, 2002@16:00:26

Running Pre-Install Routine: ^OOPSXV2

Modifying ASISTS DOL CAUSE OF INJURY CODE Table File (#2263.2)

Table update complete.

Installing Data Dictionaries:
      Feb 28, 2002@16:01:39

Installing Data:
      Feb 28, 2002@16:04:03

Installing PACKAGE COMPONENTS:

Installing BULLETIN

Installing SECURITY KEY

```

ASISTS Install Print Example, cont.

```

Installing MAIL GROUP

Installing REMOTE PROCEDURE

Installing OPTION
      Feb 28, 2002@16:04:57

Updating Routine file...

Updating KIDS files...

OOPS 2.0 Installed.
      Feb 28, 2002@16:05:03
    
```

3.3 ASISTS 2.0 Checksums

Routine name	Before Patch	After Patch	Patch List
-----	-----	-----	-----
OOPSCA	2301151	2310751	
OOPSCA1	15500850	15500850	
OOPSCA2	12275378	12275378	
OOPSCC	12321330	12345236	
OOPSCSN	380273	380273	
OOPSDIS	3554915	3554915	
OOPSDM	2547198	2547198	
OOPSDOL	15614480	15721159	
OOPSDOL1	13466377	13360473	
OOPSDOL2	11995337	12309298	
OOPSDOLX	5676301	5717339	
OOPSDS12	932431	932431	
OOPSEMP1	5698604	5698604	
OOPSEMP2	19244605	19244605	
OOPSEMPB	12343058	12343058	
OOPSESIG	1505770	1505770	
OOPSESP	422796	434193	
OOPSESR	3608495	3608495	
OOPSEUT	448543	448543	
OOPSF167	1505245	1505245	
OOPSGUI0	New	9070286	
OOPSGUI1	New	7386076	
OOPSGUI2	New	7721031	
OOPSGUI3	New	7239317	
OOPSGUI4	New	10494219	
OOPSGUI5	New	8718900	
OOPSGUI6	New	9464099	

Routine name	Before Patch	After Patch	Patch List
-----	-----	-----	-----
OOPSGUI7	New	3239568	
OOPSGUI8	New	5822984	
OOPSGUI9	New	11558303	
OOPSGUIF	New	5830210	
OOPSGUIT	New	14519272	
OOPSLOG	12819248	12819248	
OOPSMBUL	3042701	3094362	
OOPSNDB	10569029	10569029	
OOPSNDBX	6114982	6085669	
OOPSP50	20469378	20469378	
OOPSPC10	23139938	23139938	
OOPSPC11	9956072	9956072	
OOPSPC20	24134848	24134848	
OOPSPC21	15501347	15501347	
OOPSPC30	32369369	32369369	
OOPSPC40	23264208	23264208	
OOPSPC41	14796052	14796052	
OOPSPC50	20536076	20536076	
OOPSPC51	12041348	12041348	
OOPSPC60	32841819	32841819	
OOPSPC70	12504559	12504559	
OOPSPC71	15381737	15381737	
OOPSPC80	17073219	17073219	
OOPSPC81	15720404	15720404	
OOPSPCA	4423009	4423009	
OOPSPI2	13682	13682	
OOPSPRT	15564255	15564193	
OOPSPRT1	6581442	6592295	
OOPSPRT2	2026357	2026357	
OOPSPUT1	4161692	4161692	
OOPSSOF1	2772099	2772099	
OOPSSOF2	1160174	1160174	
OOPSSUP1	8823897	9290597	
OOPSSUP2	21889563	21889563	
OOPSSUP3	6096383	6096383	
OOPSSUPB	16710763	16710763	
OOPSUTL1	7558696	7993041	
OOPSUTL2	9875415	10310661	
OOPSUTL3	9184013	9184013	
OOPSUTL4	11500958	11393323	
OOPSUTL5	9903548	9902702	
OOPSUTL6	4360724	5085028	
OOPSVL1	11839452	11999948	
OOPSWCE	11277164	12998182	
OOPSWCE1	16611391	16611391	
OOPSWCE2	23782367	23782367	
OOPSWCSE	5901255	5901255	
OOPSXV2	New	6571246	

Total number of routines: 75

4 Client Installation

4.1 RPC Broker and HOSTS file

RPC BROKER

The assumption is made that the user's PC has the required RPC Broker Client Workstation set up. If this is not the case, the user should first install this software. The RPC Broker files and installation instructions can be found on the VA's RPC Broker web page. These files must be installed before running the ASISTS GUI application and can be found at the following web site: <http://vista.med.va.gov/broker/>

There are two ways in which ASISTS can communicate with the Server. The first is the use of the hosts file and serverlist utility (explained in detail below). The second option, which allows the user to bypass the "Connect To" popup screen, is to add two command line parameters to the shortcut used to execute ASISTS 2.0. The first parameter is the DNS entry\definition for the host system; the second parameter is the port the RPC listener is running under. The command line parameters should follow the shortcut definition by a single space and the parameters should be separated by a single space.

Here is a sample of how to bypass the use of the HOSTS file.

```
"C:\Program Files ASISTS\ASISTS.exe" isclaz3.fox-albany3.med.va.gov 9201
```

Notice how the parameters are outside of the final quote ("), and separated by a single space. In this example, isclaz3.fox-albany3.med.va.gov is the DNS entry for the host (fictitious) and 9201 is the RPC listener port.

Following are the directions on how to use the traditional method of a HOSTS file and serverlist utility.

HOSTS file

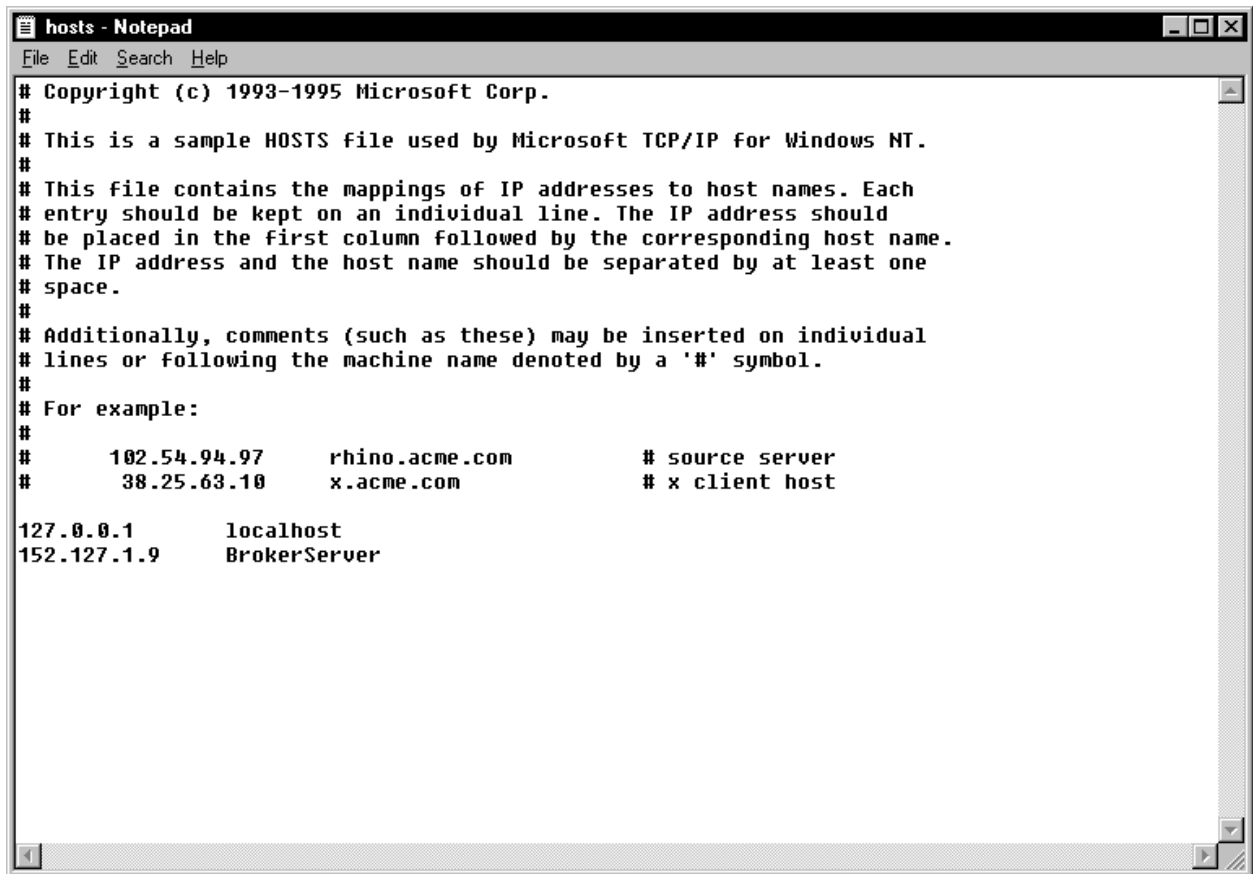
A link must be established between the client and the server via the PC's Hosts file and the PC's Windows Registry. The Hosts file (no extension) is in the following:

```
C:\Windows - for Windows 95 or 98  
C:\WinNt\System32\Drivers\Etc - for Windows NT 4
```

If the Hosts file does not exist, it must be created. (There may be a hosts.sam sample file already in place.) Note that if you create the file with notepad, notepad automatically adds a .txt extension. To remove the extension, use Explorer to rename it, leaving off the .txt.

If the Hosts file already exists, do not delete anything. Follow these instructions for updating the Hosts file:

1. If the user needs to access only one ASISTS GUI Server, and the ServerPort is 9200, then add a line to the Hosts file, as shown in the example below, using the IP address provided by the server administrator. (There must be at least one space between the address and the name. There can be no spaces in the name itself.)



```

hosts - Notepad
File Edit Search Help
# Copyright (c) 1993-1995 Microsoft Corp.
#
# This is a sample HOSTS file used by Microsoft TCP/IP for Windows NT.
#
# This file contains the mappings of IP addresses to host names. Each
# entry should be kept on an individual line. The IP address should
# be placed in the first column followed by the corresponding host name.
# The IP address and the host name should be separated by at least one
# space.
#
# Additionally, comments (such as these) may be inserted on individual
# lines or following the machine name denoted by a '#' symbol.
#
# For example:
#
#       102.54.94.97       rhino.acme.com           # source server
#       38.25.63.10      x.acme.com              # x client host

127.0.0.1       localhost
152.127.1.9     BrokerServer

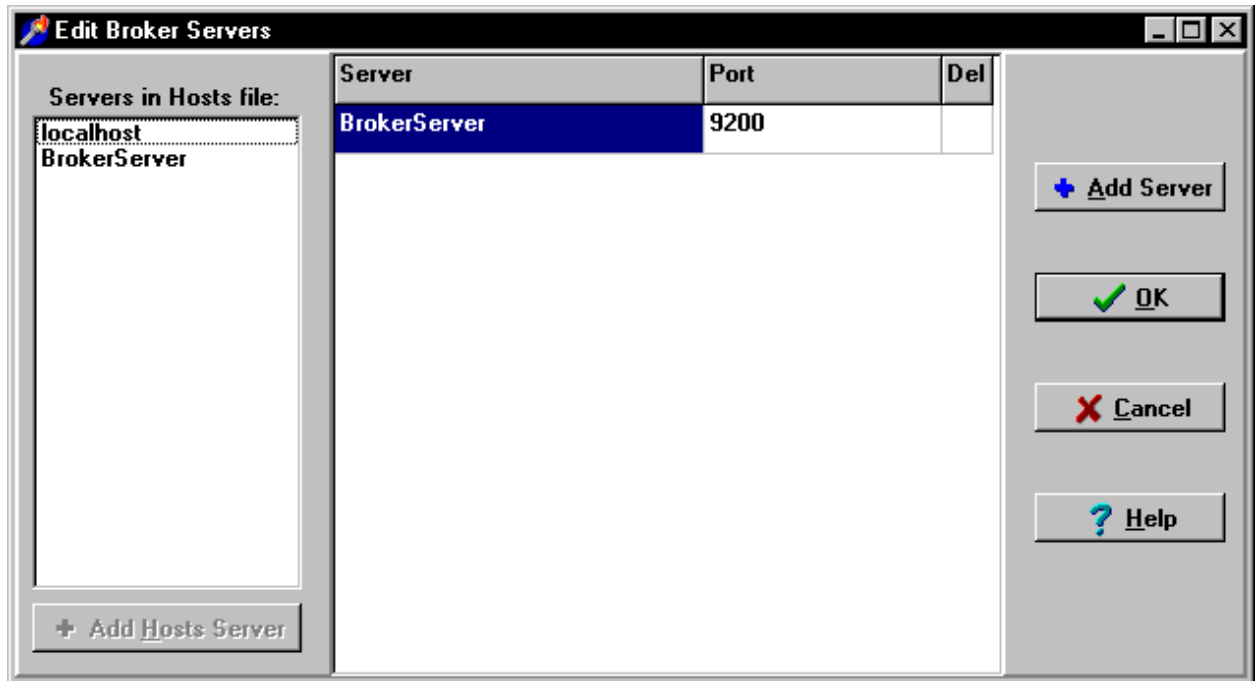
```

2. If the user needs to access only **one** ASISTS GUI Server and the ServerPort is **not** 9200, then add one line to the Hosts file as shown in Scenario 1 above and run the ServerList utility described in Scenario 3 below.
3. If the user needs to access multiple ASISTS GUI Servers and/or the ServerPort is NOT 9200, add the ASISTS GUI Server names to the Hosts file:

152.111.222.333 BrokerServer1 (The names can be anything you like)

152.111.222.444 BrokerServer2

Run the ServerList Utility installed via the installation of the ASISTS GUI install package. The left window of the ServerList utility shows those servers that have been set up as Host Servers in the HOSTS file. The right window shows those servers that have been set up as BrokerServers. To enable a BrokerServer, double-click on the name in the left window to move it to the right window and then enter the corresponding ServerPort number. (Note: the order of the names in the right list is the order they will be displayed in the drop-down box when starting ASISTS GUI. If only one server is listed on the right, then you won't see the drop down box. It will automatically select that server as the default). A left-click in the 'Del' column marks and unmarks servers for deletion. See the following ServerList screen print for an example.

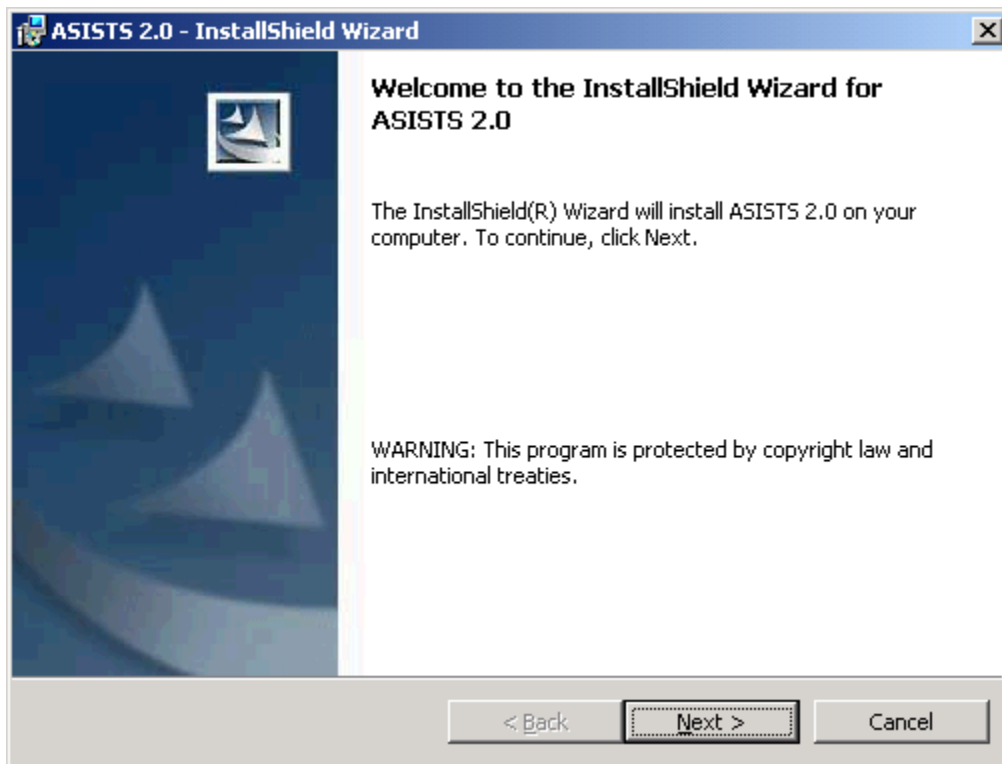


4.2 ASISTS GUI Client Installation

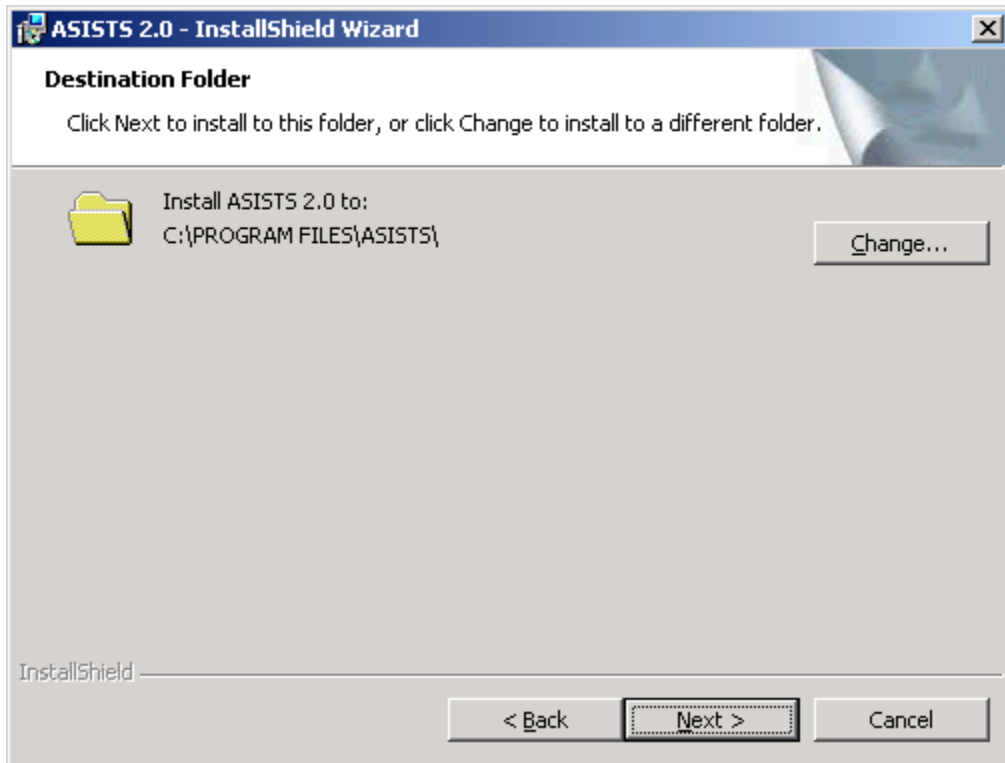
The ASISTS GUI.exe software can be installed on each PC or placed on a shared drive. Do not place the executable directly on the desktop. There is a note in the instructions section below if you wish to install the software on a shared drive.

Follow these instructions to install ASISTS GUI on the client machine.

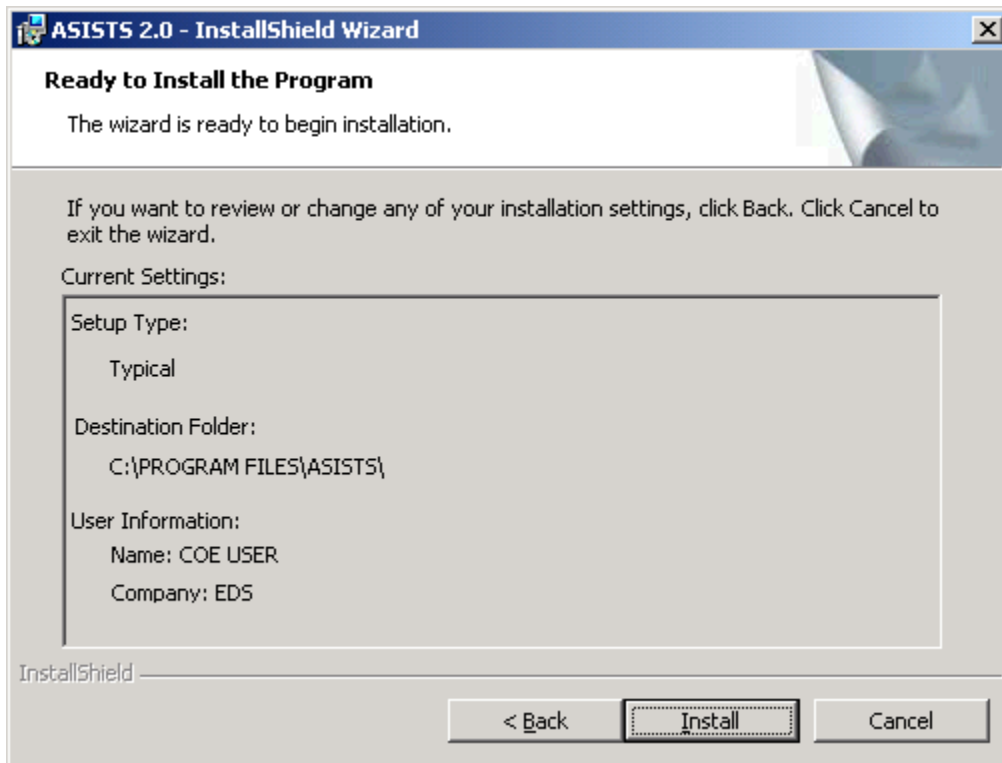
- Double Click on ASISTS_02.EXE. This will launch the InstallShield Wizard.



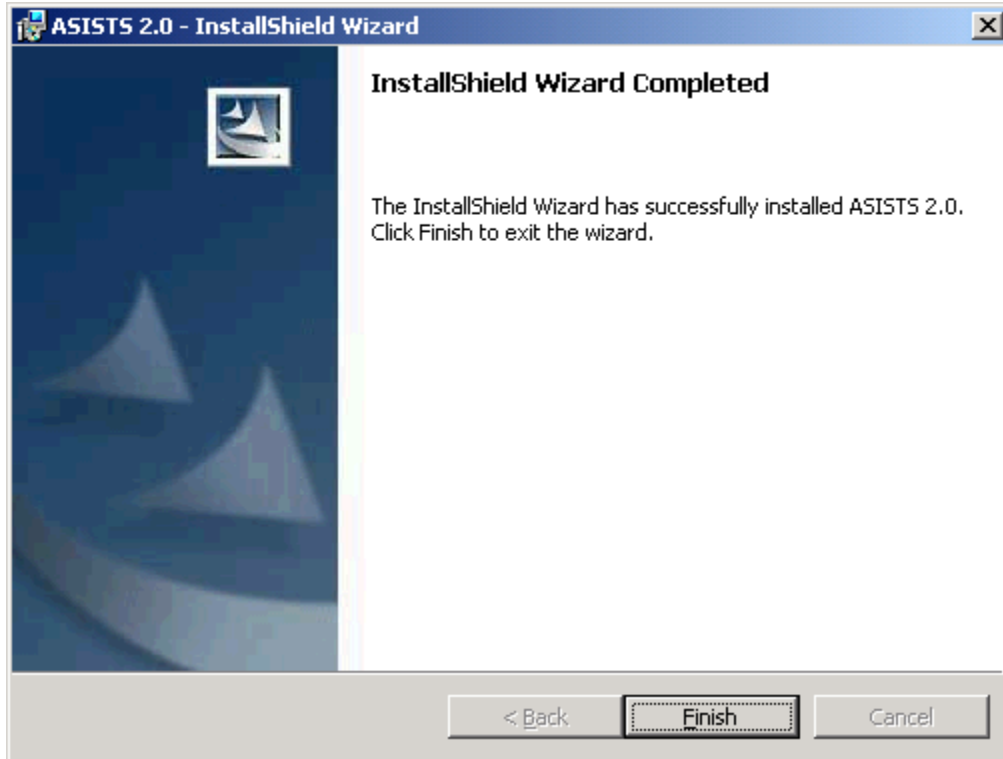
- When the “Welcome” screen is displayed, click "Next".



- On the “Choose Destination Location” Click Next, unless you wish to change the folder to which ASISTS will install to. It’s recommended to use the default/displayed folder unless installing to a network drive.



- On the "Ready to Install" Screen, Click "Install".



- The ASISTS GUI will be installed and the “InstallShield Wizard Completed” screen will be displayed. Click "Finish" and the ASISTS GUI installation is now complete.

Please note: It is **not** necessary to re-boot your machine after the installation.

4.2.1 Instructions

This installation installs the GUI executable on the user’s workstation at location: C:\Program Files\ASISTS\ASISTS.exe (unless another directory was specified on the “Choose Designation Location” screen). Using Explorer, go to the directory location of the ASISTS.exe (on the user’s workstation), create a Shortcut, and paste or copy it to the user’s Desktop for convenient access to the application.

If placed on a Network, then a shortcut to the executable on the shared drive (specified in the “Destination Folder” screen) can be created on the users’ desktop. It is very important to remember that even if the executable is installed on a shared drive, the installation of the RPC Client software and Hosts file (Section 4.1) still must be installed on each user’s workstation for ASISTS GUI to work.

If any prior versions of the applications exist on in the user’s directory location referenced above, these should be deleted.

