

# Department of Veterans Affairs



## Clinical Reminders ICD-10 Updates

**PXRM\*2\*26**

## User Manual

May 2014

Office of Information and Technology (OIT)

Product Development

## Revision History

<b>Date</b>	<b>Description</b>	<b>Author</b>
March 2014	Updates per test version 7	JoAnn Green
January 2014	Updates per test version 6	JoAnn Green
Nov-Dec 2013	Updates per Analyst review	Melanie Loucks/JoAnn Green
October 2013	Updates per test version 5	JoAnn Green
July 2013	Added Dialog changes	JoAnn Green
June 2013	Added Dialog changes for ICD-10	JoAnn Green
Feb 2013	Created draft user manual	JoAnn Green

## Table of Contents

<b>1. Background</b> .....	<b>1</b>
1.1. Clinical Reminders.....	1
<b>2. Introduction</b> .....	<b>2</b>
2.1. Purpose of this Manual .....	2
2.2. Related Documentation.....	3
2.3. Related Web Sites.....	3
2.4. Target Audience.....	3
<b>3. Taxonomy Management Changes</b> .....	<b>4</b>
3.1. Changes made to Taxonomy Management by Patch 26 (PXRМ*2*26).....	4
3.2. Taxonomy Management Dialog Changes .....	5
<b>4. Reminder Taxonomy Management Overview</b> .....	<b>7</b>
<b>5. Using Reminder Taxonomy</b> .....	<b>10</b>
5.1. Reminder Taxonomy Management Main Screen.....	10
5.2. Reminder Taxonomy Management Actions .....	10
5.2.1. Reminder Taxonomy Action Examples.....	12
5.2.2. Use in Dialog Report.....	53
<b>6. Using Reminder Dialogs Taxonomy Features</b> .....	<b>55</b>
6.1. Background – Before and After .....	55
6.2. New Fields .....	55
6.3. Examples .....	59
<b>7. Glossary/Acronyms</b> .....	<b>72</b>
<b>Appendix A – ScreenMan and Browser Overviews</b> .....	<b>74</b>
7.1.1. Browser Overview .....	78

## Table of Figures

Figure 1: Terminal Setup .....	8
Figure 2: Display Setup .....	9
Figure 3: Save from scrolling regions.....	9
Figure 4: Taxonomy Management main screen.....	10
Figure 5: Edit Action Screen.....	22
Figure 6: Edit Action Form 2.....	24
Figure 7: Coding System Selection Form.....	25
Figure 8: Copying a taxonomy definition screen.....	27

Figure 9: Standard Editing form .....	28
Figure 10: Standard Editing form 2 .....	29
Figure 11: Browsing Taxonomy Inquiry .....	31
Figure 12: Browsing Taxonomy Change Log .....	33
Figure 13: Selecting Code Search screen.....	34
Figure 14: Code Search Results.....	35
Figure 15: Example Spreadsheet for Importing codes from a CSV file.....	36
Figure 16: Selecting Import Method example .....	37
Figure 17: Taxonomy Inquire example.....	40
Figure 18: Excel Spreadshee with codes .....	41
Figure 19: Opening spreadsheet as a text file .....	42
Figure 20: Entering the number of the Taxonomy that the import file will be imported to .....	43
Figure 21: Select PA as the import method .....	43
Figure 22: Pasting the CSV file .....	44
Figure 23: Browsing the list of codes that were pasted .....	45
Figure 24: Taxonomy Inquiry of codes that were pasted .....	46
Figure 25: Using the TAX option to import a taxonomy from another taxonomy.....	47
Figure 26: Selecting another taxonomy to import from.....	48
Figure 27: Browsing list of codes screen.....	49
Figure 28: Importing a taxonomy from a web site .....	50
Figure 29: Starting the import process.....	51
Figure 30: Browsing the list of codes imported from a website.....	52
Figure 31: Browsing Use in Dialog Report .....	54
Figure 32: ScreenMan Screen.....	74

# 1. Background

The International Classification of Diseases (ICD) is a clinical coding system developed, monitored, and copyrighted by the World Health Organization (WHO). In the United States (US), the National Center for Health Statistics (NCHS), part of the Centers for Medicare and Medicaid Services (CMS), is the agency responsible for overseeing of the clinical modification to the ICD code set.

On January 16, 2009, the Department of Health and Human Services (HHS) published the 45 CFR Part 162 Final Rule for the Health Insurance Portability and Accountability Act (HIPAA) Administrative Simplification: Modifications to Medical Data Code Set Standards to Adopt the International Classification of Diseases, 10<sup>th</sup> Revision Clinical Modification and Procedure Coding System (ICD-10-CM and ICD-10-PCS) for all healthcare organizations currently using the 9<sup>th</sup> Edition of the Clinical Modification code set, or ICD-9-CM (also just referred to as “ICD-9”). Presently, ICD-9-CM encompasses both Clinical Modification and Procedure Coding System code set. On August 24, 2012, the Secretary for HHS published final ruling officially changing the ICD-10 compliance date to October 1, 2014 – Congress has since changed the compliance date to October 2015.

**Implementation** of ICD-10-CM and PCS is an immense undertaking, requiring system and business changes throughout all HIPAA-covered entities of the health care industry, including the U.S. Department of Veterans Affairs (VA). All inpatient discharges and outpatient encounter dates on or after the compliance date will require ICD-10 codes as the standard code set for recording and reporting diagnosis and inpatient procedures. This transition will impact Information Technology (IT) systems, secondary data stores, forms and business processes and stakeholders at all levels of the organization.

## 1.1. Clinical Reminders

Sites will need to identify clinical reminder taxonomies that may be used in one or more clinical reminders. The next step will be to determine the ICD-10 codes to be added when the software is made available for use.

For services occurring on October 1, 2015, ICD-9 codes will become inactive. It will important to assure that the comparable ICD-10 codes are added to the reminder taxonomies in order for those codes to become active on the compliance date. Because ICD-9 taxonomies, however, may have historical data needed for Clinical Reminders even after the compliance date, previous ICD-9 codes will not be removed. ICD-10 codes will read as “selectable” and able to be added to the taxonomies as a range or as individual codes, depending on what needs to be included in the Clinical Reminder definitions.

## 2. Introduction

The purpose of the Clinical Reminders ICD-10 Update project is to update Clinical Reminders to allow the use of ICD-10 codes. A very general approach has been taken, wherein Clinical Reminders taxonomies are being restructured to be Lexicon-based instead of pointer-based. This allows the use of any coding system supported by the Lexicon package. In addition to adding ICD-10 codes, SNOMED CT codes are being added. When CPRS 29 is released, SNOMED CT codes will be collected by Problem List, and Clinical Reminders will be able to search for them.

The project includes three patches:

### **DG\*5.3\*862 - PTF ICD-10 CHANGES FOR CLINICAL REMINDERS**

This build updates the Clinical Reminders Index cross-references in the PTF file (#45) to accommodate ICD-10 diagnosis and procedure codes. It restructures the PTF portion of the Clinical Reminders Index to a generic format that can support all ICD coding systems. See the Clinical Reminders Index Technical Guide/Developer's Manual (PXRМ\_INDEX\_TM) for more information.

### **GMPL\*2.0\*44 - PROBLEM LIST ICD-10 CHANGES FOR CLINICAL REMINDERS**

This build updates the Clinical Reminders Index cross-references in the Problem file (#9000011) to accommodate ICD-10 CM diagnosis codes. It restructures the Problem List portion of the Clinical Reminders Index to a generic format that can support ICD and SNOMED CT coding systems. See the Clinical Reminders Index Technical Guide/Developer's Manual (PXRМ\_INDEX\_TM) for more information.

### **PXRМ\*2.0\*26**

This build changes Clinical Reminders taxonomies from being pointer-based to being Lexicon-based. A number of things are done to accomplish this. The Reminder Taxonomy data dictionary (file #811.2) is restructured, a new taxonomy management system is introduced, and taxonomy evaluation is changed to accommodate the new structure. For Reminder Dialogs, users will no longer be able to add ICD-9-CM and/or CPT-4 codes to a Reminder Dialog, but will need to create a Taxonomy, assign codes, and then add the Taxonomy to the Reminder Dialog.

Under the Lexicon-based structure, codes are no longer entered as a range, eliminating the need for taxonomy expansion. The post-install routine will convert all existing taxonomies to the new structure.

See the Taxonomy Management and Dialog Management sections of the Clinical Reminders Manager's Manual for details of the new taxonomy management system.

## 2.1. Purpose of this Manual

This manual is intended for Clinical Application Coordinators and other Clinical Reminders managers who will create and modify taxonomies to use the new ICD-10 codes. It describes the various actions available for adding, editing, copying, and importing codes.

## 2.2. Related Documentation

Documentation	Documentation File name
Installation Guide	PXRM_2_0_26_IG.PDF
Release Notes	PXRM_2_0_26_RN.PDF
Clinical Reminders Manager's Manual	PXRM_2_0_MM.PDF
Technical Manual	PXRM_2_0_TM.PDF
Clinical Reminders Index Technical Guide/Developer's Manual	PXRM_INDEX_TM.PDF

## 2.3. Related Web Sites

Site	URL	Description
National Clinical Reminders site	<a href="http://vista.med.va.gov/reminders">http://vista.med.va.gov/reminders</a>	Contains manuals, PowerPoint presentations, and other information about Clinical Reminders.
National Clinical Reminders Committee SharePoint site	<a href="http://vaww.portal.va.gov/sites/ncrcpublic/default.aspx">http://vaww.portal.va.gov/sites/ncrcpublic/default.aspx</a>	This committee directs the development of new and revised national reminders.
VistA Document Library	<a href="http://www.va.gov/vdl/">http://www.va.gov/vdl/</a>	Contains manuals for Clinical Reminders and related applications.
Health Information Management (HIM) ICD-10 Implementation	<a href="http://vaww.vhahim.va.gov/">http://vaww.vhahim.va.gov/</a>	Contains general information, training resources, and other tools for VA's transition to ICD-10.

## 2.4. Target Audience

- Clinical Reminders Managers
- Clinical Application Coordinators (CACs)

### 3. Taxonomy Management Changes

Reminder taxonomies, stored in file #811.2, provide a convenient way to create a set of coded values and give the set a name. For example, the VA-DIABETES taxonomy contains a list of ICD diagnosis codes that signify the patient has a diagnosis of diabetes.

#### 3.1. Changes made to Taxonomy Management by Patch 26 (PXR\*2\*26)

*In the past*, taxonomies were based on pointers to the ICD diagnosis file (#80), the ICD Operation/ Procedure file (#80.1), and the CPT file (#81). Multiple ranges of codes (low code to high code) could be defined for each of these coding systems. When editing was finished, each range of codes was expanded to include all the codes from the low code to the high code.

Some coding systems such as SNOMED CT do not assign any meaning to the codes, so they cannot be grouped by code and the concept of a range of codes is meaningless. In some cases, for coding systems that do support the concept of a range, code set updates have inserted an unrelated code into a range.

**New Approach:** For the above reasons, patch PXR\*2\*26 changes taxonomies so that they are Lexicon-based. This is a general approach that allows Clinical Reminders taxonomies to support any coding system defined in Lexicon's Coding Systems file (#757.03), provided Lexicon maintains the coding system and patient data using the coding system is stored in VistA.

For each coding system it includes, the Coding Systems file defines a three-character abbreviation, nomenclature, source title, and source. Example: ICD, ICD-9-CM, International Classification of Diseases, Diagnosis, 9th Edition, and US Department of Health and Human Services. The three-character abbreviation provides a convenient way to refer to coding systems and is used by Clinical Reminders Taxonomies. The following coding systems are supported by Clinical Reminders:

Abbreviation	Nomenclature
10D	ICD-10-CM
10P	ICD-10-Proc
CPT	CPT-4
CPC	HCPCS
ICD	ICD-9-CM
ICP	ICD-9-Proc



## 3.2. Taxonomy Management Dialog Changes

*In the past*, users created Reminder Dialogs containing ICD-9-CM and/or CPT-4 codes. When using codes as Finding Items or Additional Finding Items in CPRS, the end user didn't select codes; codes were automatically filed to VistA when the element/group was selected in the Reminder Dialog.

A Taxonomy could only be used as a Finding Item; it created a pick list of codes for the user to pick from in CPRS. The display in CPRS was controlled by the set-up in the Reminder Finding Parameter File (#801.45) and the Reminder Taxonomy File (#811.2). These controls determined if the Taxonomy should assign codes to the current encounter or an historical encounter. The controls also determined what prompts were assigned to the Reminder Dialog in CPRS.

*New approach*: Users will no longer be able to add ICD-9-CM and/or CPT-4 codes to a Reminder Dialog. Users will need to create a Taxonomy, assign codes, and then add the Taxonomy to the Reminder Dialog. To maintain similar end user functionality in CPRS, a new prompt called Taxonomy Pick List Display has been added to the dialog editor. This controls how Taxonomies should display in CPRS.

### New Fields

*Taxonomy Pick List* = This field controls if and what pick lists should appear in CPRS. The possible values are based on the setup of the Taxonomy in the Finding Item Field. If a pick list is set to not display, the active codes marked to be used in a dialog will automatically be filed to PCE for the encounter date for that element when the finish button is clicked.

- Four choices for display of pick list
  - **ALL** – Displays two pick lists for choosing codes
    - One for ICD and one for CPT
  - **DX ONLY** – Displays pick list for ICD only. All CPT codes in taxonomy are entered into PCE
  - **CPT ONLY** – Displays 'pick list' for CPT only. All ICD codes in taxonomy are entered into PCE
  - **NONE** – No 'pick list' for either ICD or CPT. All codes in taxonomy are entered into PCE
- Normally the Default is ALL.
- Have to have a choice selected.
- These pick lists are only relevant for the Finding Type field (not Additional Findings field).

**Diagnosis Header:** This field displays text that will be used for the Taxonomy Checkbox. The prompt is only available if the Taxonomy Selection Value is set to All. The default value is from the Reminder Finding Type Parameter.

**Procedure Header:** This field displays text that will be used for the Taxonomy Checkbox. The prompt is only available if the Taxonomy Selection Value is set to All.. The default value is from the Reminder Finding Type Parameter.

Also, after PXR\*2.0\*26, users will no longer be able to set one Taxonomy Element to prompt for both Current and Historical Encounter Data. Users will need to create an element for each encounter type, Current and Historical. If the element Resolution Type is set to Done Elsewhere, then the editor will prompt the user to accept the default prompts for the taxonomy which includes prompts for historical data. prompt for historical data. Any other resolution type or no resolution type will prompt data for the current encounter date.

For the ICD-10 implementation, Reminder Dialogs will display ICD-9-CM or ICD-10-CM codes in a pick list based on the code set versioning rules. Reminder Dialogs determine what codes to display using the following rules:

- Current encounters= active codes for that encounter date; Addendums will use the parent note Encounter date.
- Historical encounters= active codes for system date

**Also note** that previously dialogs were set to both current and historical encounters. Dialogs are now set to current encounters only. Please review dialogs before using in CPRS.

## 4. Reminder Taxonomy Management Overview

A new taxonomy management system replaces the previous taxonomy management menu. The new system uses a combination of List Manager, ScreenMan, and the Browser. List Manager should already be familiar to users of Clinical Reminders tools such as Dialog Management or Reminder Exchange. ScreenMan and the Browser may not be as familiar, but reviewing Appendix A of this manual or the FileMan documentation should give you enough knowledge to make using the taxonomy management system much easier.

### ScreenMan Overview

ScreenMan is VA FileMan's *screen-oriented* data entry tool. It is an alternative to the Scrolling Mode approach. With ScreenMan, data is entered in *forms*. Each form field occupies a fixed position on the screen (instead of scrolling off!). You can see many data fields at once, and use simple key combinations to edit data and move from field to field on a screen. You can also move from one screen to another like turning through the pages of a book.

If you are not familiar with how to use ScreenMan, see Appendix A of this manual for a brief overview. *For a detailed explanation of using ScreenMan and the Browser, please refer to the VA FileMan Getting Started manual.*

### Browser Overview

The Browser lets you view any report *on the screen* instead of *on paper*. Do this by printing your report to the **BROWSER** device instead of the HOME device or a printer.

The Browser makes it very easy to view reports on screen. Its main features are:

- Scroll forwards *and backwards* through a report. This means you don't lose reports "off the top" of the screen, like you do when you print to the HOME device.
- Use the Search feature to find and immediately jump to any text in a report.
- Copy text from the report to the VA FileMan Clipboard; later, if you're editing a mail message or other WORD-PROCESSING-type field with the Screen Editor, you can paste from the clipboard.

For more information on the Screen Editor, please refer to Chapter, "Screen Editor," in the FileMan Getting Started User Manual.

The Browser also lets you browse the contents of any word-processing-type field.

## Shortcuts and Screen setup Tips

Both the Browser and ScreenMan have shortcuts that can save you a lot of time. Each shortcut begins by pressing the Num Lock (NL) key. (NOTE: some laptops don't have a NumLock key, so you would need to use Map Keyboard on your Reflections Utility menu to map a terminal key to the PC NumLock key.)

Some Browser actions:

- (NL)B – go to bottom
- (NL)E – exit
- (NL)F – find
- (NL)H – help
- (NL)Q – quit
- (NL)T – go to top

Some ScreenMan shortcuts:

- (NL)C – close a screen
- (NL)E – exit and save changes
- (NL)H – help
- (NL)Q – exit and do not save changes
- (NL)Z – zoom editor

Your Reflections session setup makes a difference in the appearance of the ScreenMan display. The screen element Normal default is a white background and black foreground. Choosing a background color other than white and a foreground color that works well with the background color will provide a more readable ScreenMan display.

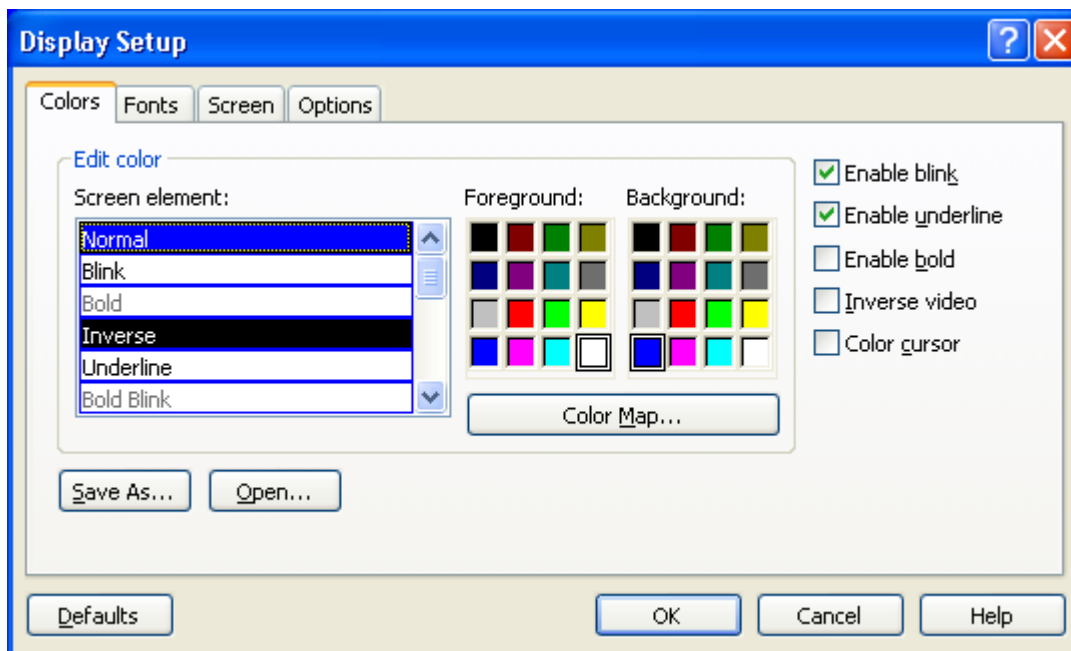


Figure 1: Terminal Setup

## Missing text when printing tip

You may notice when printing large amounts of text to the screen, parts of it are missing. To fix this, the Reflections setup must have Save from Scrolling Regions checked. The sequence is:: Setup => Display => Screen => Display Memory Advanced.

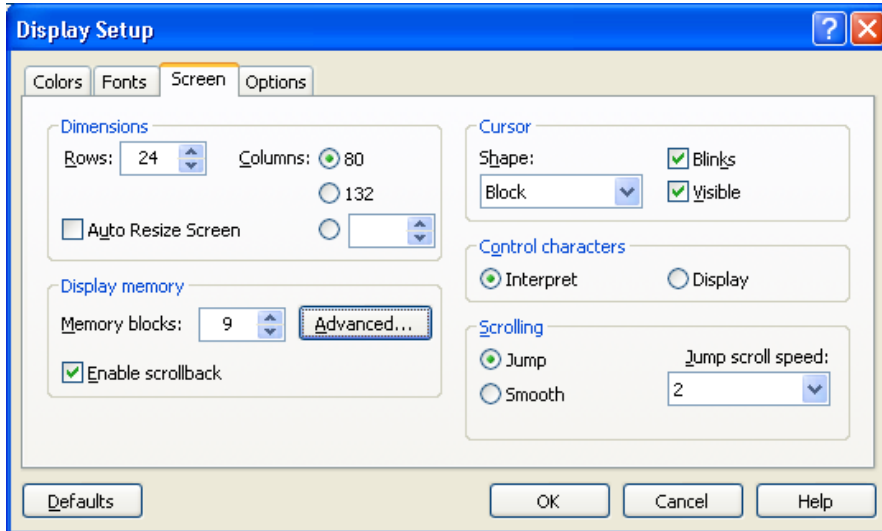


Figure 2: Display Setup

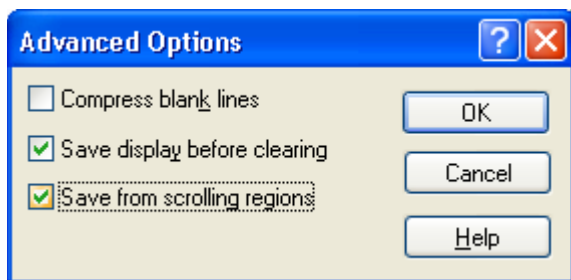


Figure 3: Save from scrolling regions

## 5. Using Reminder Taxonomy

### 5.1. Reminder Taxonomy Management Main Screen

When you select Taxonomy Management from the Clinical Reminders Manager Menu, you will go into a List Manager Taxonomy Management screen. It lists all of the taxonomies on your system. You can use the standard List Manager actions to search or scroll through the list.

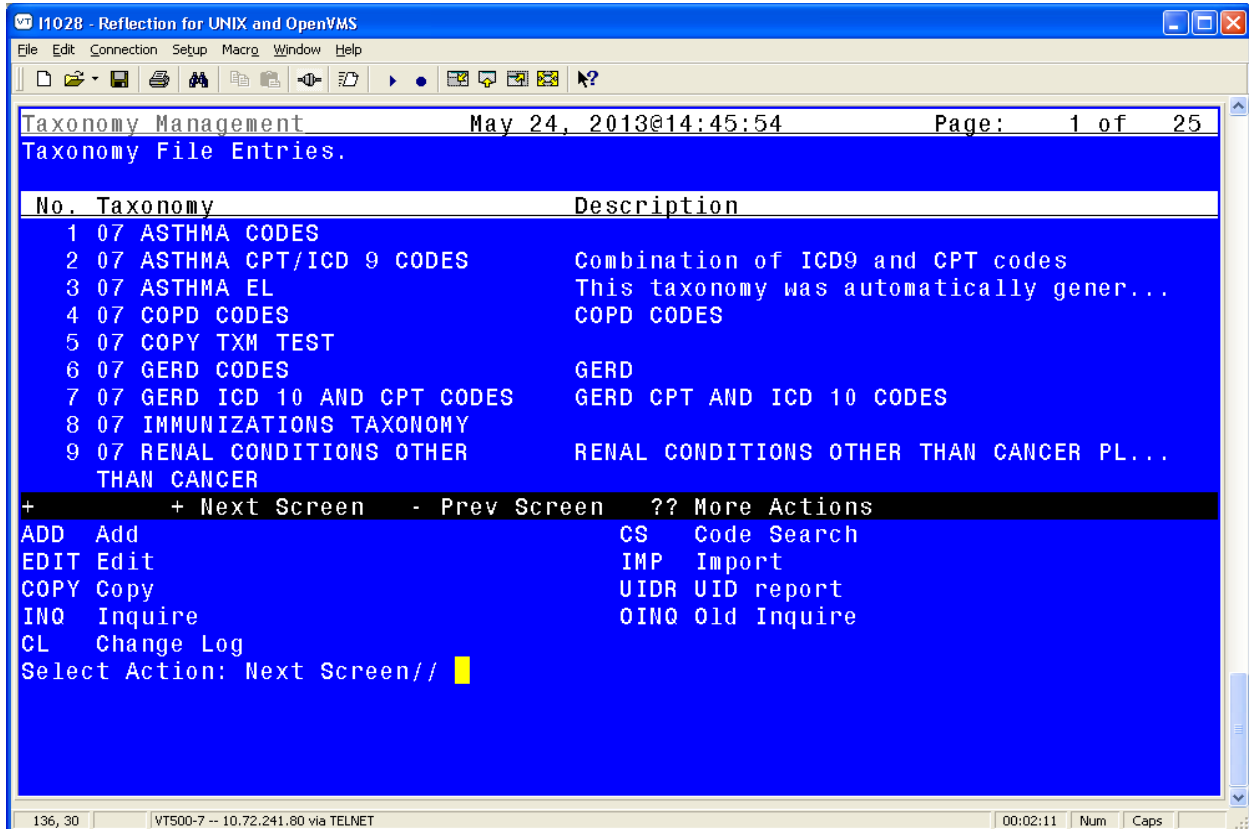


Figure 4: Taxonomy Management main screen

### 5.2. Reminder Taxonomy Management Actions

Synonym	Action	Description
ADD	Add	Use this action to create a new taxonomy.
EDIT	Edit	Use this action to edit an existing taxonomy.
COPY	Copy	This action allows the user to copy an existing taxonomy into a new one. The new taxonomy must have a unique name.
INQ	Inquire	Use this action to obtain a detailed report about a taxonomy. It lists all the codes that have been selected, the code's status, and shows if the code has been marked as Use In Dialog (UID).
CL	Change Log	Use this action to display a taxonomy's change log (edit history).
EH	Edit History	Use this action to display a taxonomy's edit history.
CS	Code Search	This action can be used to find all taxonomies that include a

Synonym	Action	Description
		particular code.
IMP	Import	Use this action to import codes from a CSV file.
UIDR	UID Report	This action runs the UID report which displays all inactive codes marked as UID.

For the Edit, Copy, Inquire, and Edit History actions, you can select the action and then the entry number, or if you select an entry, you will be prompted to choose one of these actions. When the Import action is selected, it prompts you for a taxonomy to import into. Code Search and UID Report do not prompt for a taxonomy because these reports are run on all taxonomies.

**\*NOTE – KNOWN ANOMALY:**

For any action that works with a list, you can select the list and then the action or select the action and then the list. In the first case, the system uses List Manager’s list selection, which displays the list as a string of items. If the list has too many items, it generates an error.

The workaround is to select the action first.

For example, on the code selection screen, if you do an ICD-10 Lexicon search for diabetes, you will see a list of around 250 codes. If you enter 1-250 at the Select Action prompt, you’ll get a range error. However, if you select Add, then you can enter 1-250 and not get an error.

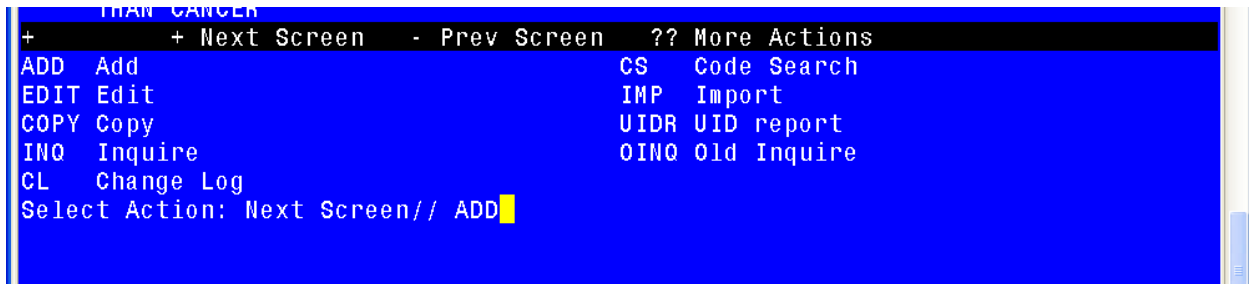
Lexicon Selection		Nov 14, 2013@11:16:15		Page: 57 of 57	
Term/Code: diabetes					
253 ICD-10-CM codes were found.					
+No.	Code	Active	Inactive	Description	
				Gestational Diabetes	
250	P70.2	10/1/2014		Neonatal diabetes mellitus	
251	Z13.1	10/1/2014		Encounter for Screening for Diabetes Mellitus	
252	Z83.3	10/1/2014		Family History of Diabetes Mellitus	
253	Z86.32	10/1/2014		Personal History of Gestational Diabetes	
<b>+ Next Screen   - Prev Screen   ?? More Actions</b>					
ADD	Add to taxonomy			UID	Use in dialog
RFT	Remove from taxonomy			SAVE	Save
RFD	Remove from dialog				
Select Action: Quit// 1-250					
>>> Range too large: 1-250.					

## 5.2.1. Reminder Taxonomy Action Examples

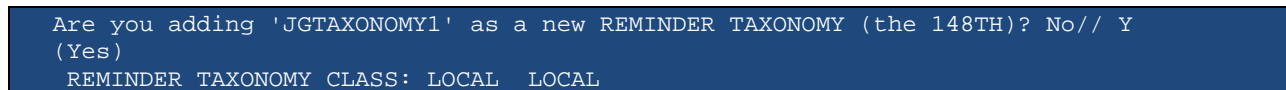
### Add

Use this action to add a new taxonomy, following these steps:

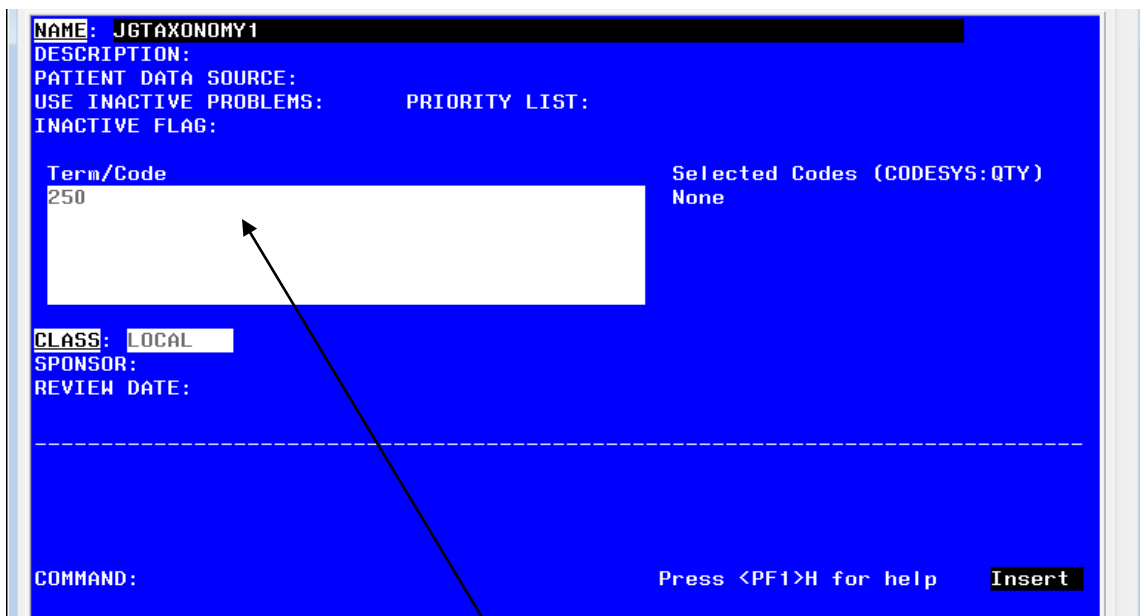
1. At the Select Action screen, type ADD.



2. Enter the Name and Class of the new taxonomy.

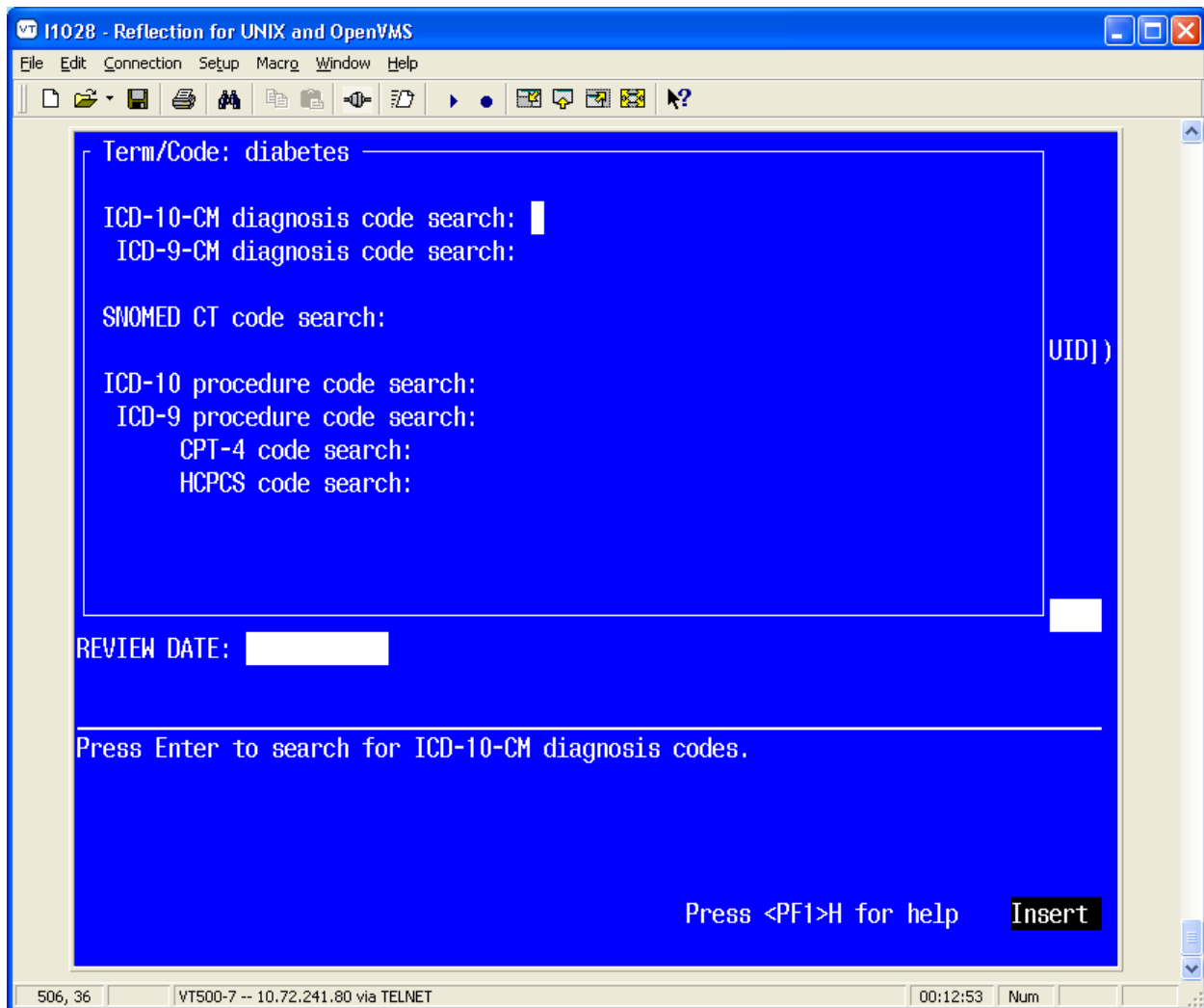


3. Once these have been entered you will be taken to the ScreenMan edit form.



4. Press Enter at the Term/Code, and a screen for selecting or editing codes opens:





- The top line displays the Term/Code that will be used in the search.
  - Use the directional arrows to select a coding system for the search.
5. Press Enter at any of the code search prompts and a Lexicon search screen opens and all the matches are listed.
- The codes are displayed in a List Manager screen. At the top, it shows you the Term/Code and the number of codes found in the selected coding system.



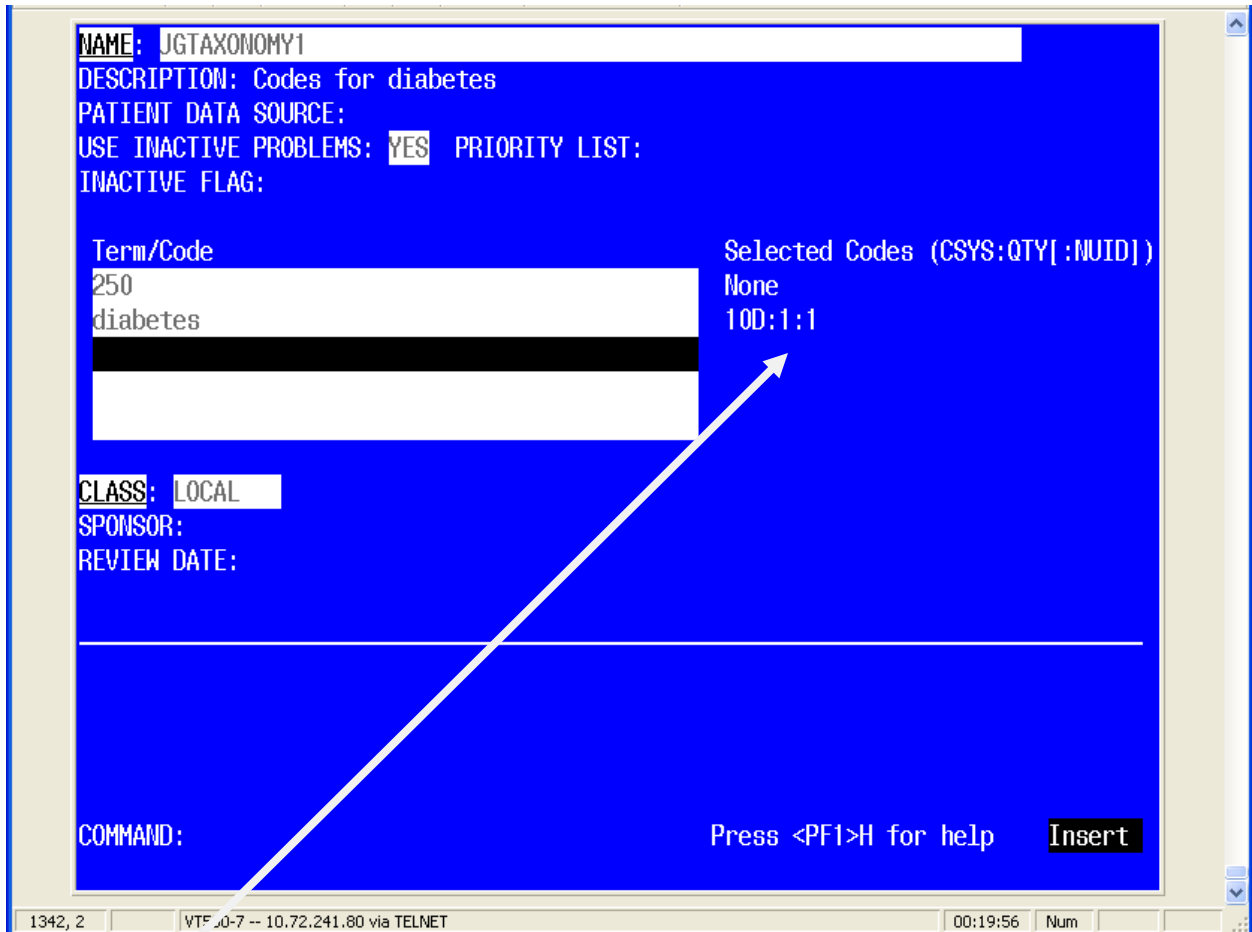
8. Two codes were selected and the ADD action was chosen.
9. Choices are highlighted. Your screen set-up will determine the highlight color
10. Be sure and SAVE or EXIT to “Save” changes.

Lexicon Selection		Feb 14, 2014@09:04:58		Page: 8 of 18	
Term/Code: DIABETES					
80 ICD-9-CM codes were found, 2 are selected.					
+No.	Code	Active	Inactive	Description	
				[Juvenile type], Uncontrolled	
29	250.20	10/1/1978	10/1/2014	Diabetes with Hyperosmolarity, type II or unspecified type, not stated as Uncontrolled	
30	250.21	10/1/1978	10/1/2014	Diabetes with Hyperosmolarity, type i [Juvenile type], not stated as Uncontrolled	
31	250.22	10/1/1978	10/1/2014	Diabetes with Hyperosmolarity, type II or unspecified type, Uncontrolled	
32	250.23	10/1/1978	10/1/2014	Diabetes with Hyperosmolarity, type i [Juvenile type], Uncontrolled	
+      + Next Screen    - Prev Screen    ?? More Actions					
ADD	Add to taxonomy			CV	Change view
RFT	Remove from taxonomy			SAVE	Save
RFD	Remove from dialog			EXIT	Exit with save
UID	Use in dialog				
Select Action: Next Screen//					

- Once a SAVE is done, the screen for more codes is presented. If no more codes are needed, use the NUM LOCK+E key configuration to exit
- Screen now shows there are two ICD codes added

NAME: AJM TRAINING TAXONOMY	
DESCRIPTION:	
PATIENT DATA SOURCE:	
USE INACTIVE PROBLEMS:	PRIORITY LIST:
INACTIVE FLAG:	
Term/Code	Selected Codes (CSYS:QTY[:NUID])
diabetes	ICD:2
CLASS: LOCAL	
SPONSOR:	
REVIEW DATE:	

### Completed screen Example 1:



Legend: The text on the right-hand side of the screen  
(CSYS:QTY[:NUID]) = Coding System and Quantity|Not used in dialog|  
The coding system for diabetes is 10D and there is only one code.

- This taxonomy now has two codes that can only be used in reminder definition or reminder term
- If you want to use the codes in a reminder dialog, you must use the UID option
- In this example, entry 29 is now allowed for use in a reminder dialog (signified by gray highlighting)

Lexicon Selection		Feb 14, 2014@09:07		Page: 8 of 18	
Term/Code: DIABETES					
80 ICD-9-CM codes were found, 2 are selected.					
+No.	Code	Active	Inactive	Description	
				[Juvenile type], Uncontrolled	
29	250.20	10/1/1978	10/1/2014	Diabetes with Hyperosmolarity, type II or unspecified type, not stated as Uncontrolled	
30	250.21	10/1/1978	10/1/2014	Diabetes with Hyperosmolarity, type i [Juvenile type], not stated as Uncontrolled	
31	250.22	10/1/1978	10/1/2014	Diabetes with Hyperosmolarity, type II or unspecified type, Uncontrolled	
32	250.23	10/1/1978	10/1/2014	Diabetes with Hyperosmolarity, type i [Juvenile type], Uncontrolled	
+      + Next Screen    - Prev Screen    ?? More Actions					
ADD	Add to taxonomy			CV	Change view
RFT	Remove from taxonomy			SAVE	Save
RFD	Remove from dialog			EXIT	Exit with save
UID	Use in dialog				
Select Action: Next Screen//					

- The taxonomy now has two codes for use in a reminder definition and one code for use in a dialog

<b>NAME:</b> AJM TRAINING TAXONOMY	
<b>DESCRIPTION:</b>	
<b>PATIENT DATA SOURCE:</b>	
<b>USE INACTIVE PROBLEMS:</b>	<b>PRIORITY LIST:</b>
<b>INACTIVE FLAG:</b>	
<b>Term/Code</b>	<b>Selected Codes (CSYS:QTY[:NUID])</b>
diabetes	ICD:2:1
<b>CLASS:</b> LOCAL	
<b>SPONSOR:</b>	
<b>REVIEW DATE:</b>	

## Add Taxonomy To a Dialog

- Add Taxonomy instead of ICD/CPT code
  - Finding Item
  - Additional Finding
- Abbreviation is TX

```
DISABLE:
CLASS: LOCAL//
SPONSOR:
REVIEW DATE:
RESOLUTION TYPE:
ORDERABLE ITEM:
Finding item: TX AJM TAXONOMY
FINDING ITEM: AJM TAXONOMY// ?
  Enter the finding item for this dialog element.
  Enter one of the following:
    ED.EntryName to select a EDUCATION TOPICS
    IM.EntryName to select a IMMUNIZATION
    ST.EntryName to select a SKIN TEST
    EX.EntryName to select a EXAM
    HF.EntryName to select a HEALTH FACTOR
    VM.EntryName to select a VITAL TYPE
    TX.EntryName to select a REMINDER TAXONOMY
    O.EntryName to select a ORDER DIALOG
    MH.EntryName to select a MENTAL HEALTH
    WH.EntryName to select a WH NOTIFICATION PURPOSE

  To see the entries in any particular file type <Prefix.??>
```

- Use RFT option to remove codes from taxonomy
  - This will also remove codes from UID
- Use RFD to remove codes from UID only

Lexicon Selection		Feb 14, 2014@09:07		Page: 8 of 18	
Term/Code: DIABETES					
80 ICD-9-CM codes were found, 2 are selected.					
+No.	Code	Active	Inactive	Description	
				[Juvenile type], Uncontrolled	
29	250.20	10/1/1978	10/1/2014	Diabetes with Hyperosmolarity, type II or unspecified type, not stated as Uncontrolled	
30	250.21	10/1/1978	10/1/2014	Diabetes with Hyperosmolarity, type i [Juvenile type], not stated as Uncontrolled	
31	250.22	10/1/1978	10/1/2014	Diabetes with Hyperosmolarity, type II or unspecified type, Uncontrolled	
32	250.23	10/1/1978	10/1/2014	Diabetes with Hyperosmolarity, type i [Juvenile type], Uncontrolled	
+      + Next Screen    - Prev Screen    ?? More Actions					
ADD	Add to taxonomy			CV	Change view
RFT	Remove from taxonomy			SAVE	Save
RFD	Remove from dialog			EXIT	Exit with save
UID	Use in dialog				
Select Action: Next Screen//					

- In the example shown, only ICD-9 diagnosis codes were used/added
- The same process holds true for:
  - ICD-10 diagnosis
  - SNOMED CT
  - CPT-4
  - HCPCS
  - ICD-10 procedure
  - ICD-9 procedure

## Add a Group of Codes to a Taxonomy

- Different from pre-patch 26.
- Not pertinent to SNOMED CT, as adjacent codes are usually not related.
- After entering a term or partial code to get a list of returned matches, choose ADD option, select codes 1-80.
- SAVE or EXIT.

Lexicon Selection		Feb 14, 2014@09:26:41		Page: 1 of 18
Term/Code: DIABETES				
80 ICD-9-CM codes were found, 0 are selected.				
No.	Code	Active	Inactive	Description
1	249.00	10/1/2008	10/1/2014	Secondary Diabetes Mellitus without mention of Complication, not Stated as Uncontrolled, or unspecified
2	249.01	10/1/2008	10/1/2014	Secondary Diabetes Mellitus without mention of Complication, Uncontrolled
3	249.10	10/1/2008	10/1/2014	Secondary Diabetes Mellitus with Ketoacidosis, not Stated as Uncontrolled, or unspecified
4	249.11	10/1/2008	10/1/2014	Secondary Diabetes Mellitus with Ketoacidosis, Uncontrolled
+      + Next Screen    - Prev Screen    ?? More Actions				
ADD	Add to taxonomy			CV    Change view
RFT	Remove from taxonomy			SAVE Save
RFD	Remove from dialog			EXIT Exit with save
UID	Use in dialog			
Select Action: Next Screen// add    Add to taxonomy				
Enter a list or range of numbers (1-80): 1-80				

- All 80 codes pertaining to Diabetes were added to the taxonomy
- All 80 codes were enabled to be used in dialog by choosing UID for 1-80
- SAVE or EXIT.

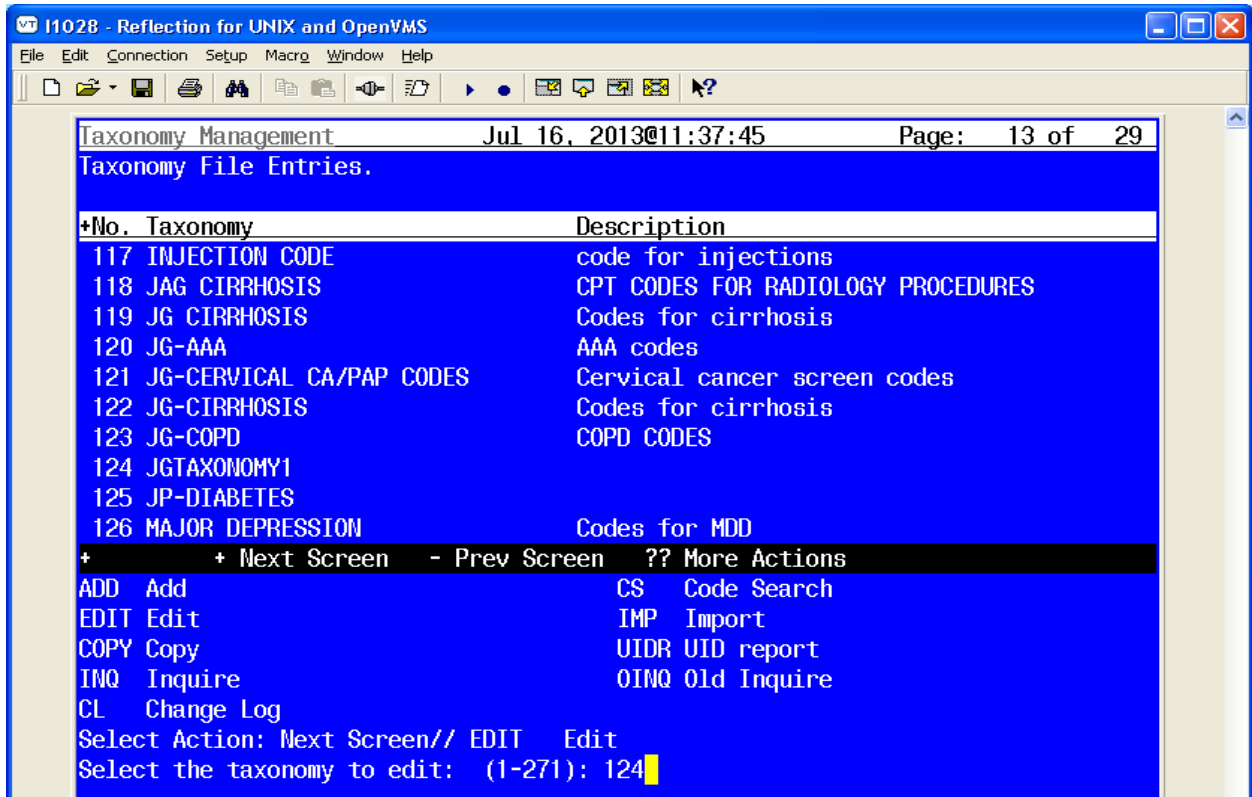
Lexicon Selection		Feb 14, 2014@09:25:34		Page: 1 of 18
Term/Code: DIABETES				
80 ICD-9-CM codes were found, 80 are selected.				
No.	Code	Active	Inactive	Description
1	249.00	10/1/2008	10/1/2014	Secondary Diabetes Mellitus without mention of Complication, not Stated as Uncontrolled, or unspecified
2	249.01	10/1/2008	10/1/2014	Secondary Diabetes Mellitus without mention of Complication, Uncontrolled
3	249.10	10/1/2008	10/1/2014	Secondary Diabetes Mellitus with Ketoacidosis, not Stated as Uncontrolled, or unspecified
4	249.11	10/1/2008	10/1/2014	Secondary Diabetes Mellitus with Ketoacidosis, Uncontrolled
+      + Next Screen    - Prev Screen    ?? More Actions				
ADD	Add to taxonomy			CV    Change view
RFT	Remove from taxonomy			SAVE Save
RFD	Remove from dialog			EXIT Exit with save
UID	Use in dialog			
Select Action: Next Screen//				



## Edit

Use this action to edit the fields in a taxonomy definition.

1. Scroll through the taxonomies by pressing the Enter key. Select the Edit action and then select the # of the taxonomy to edit.



2. When you select the Edit action, a ScreenMan form opens.

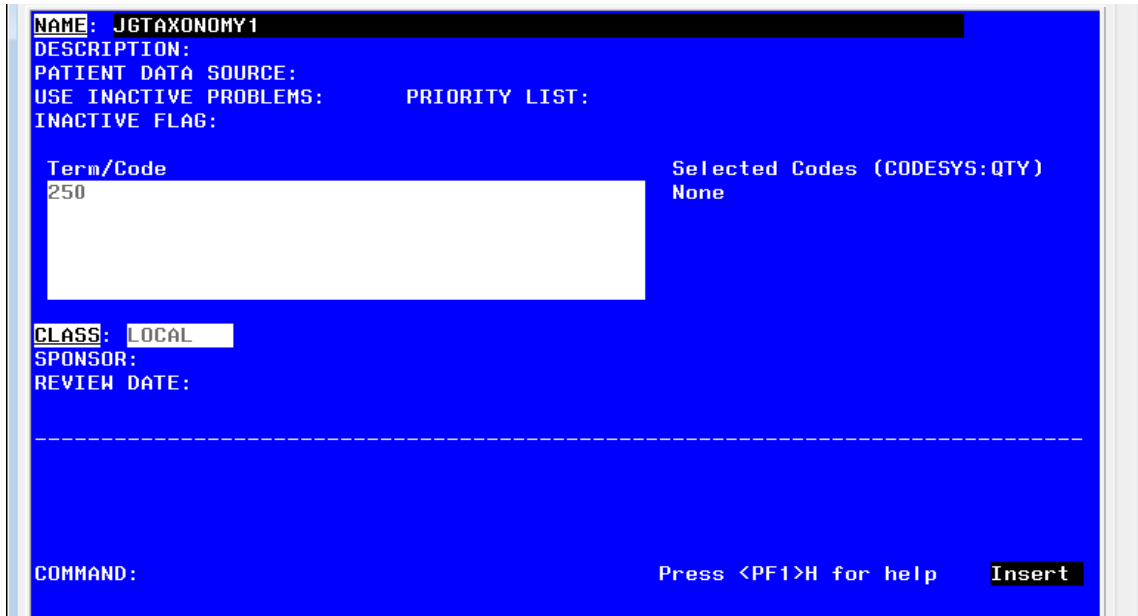
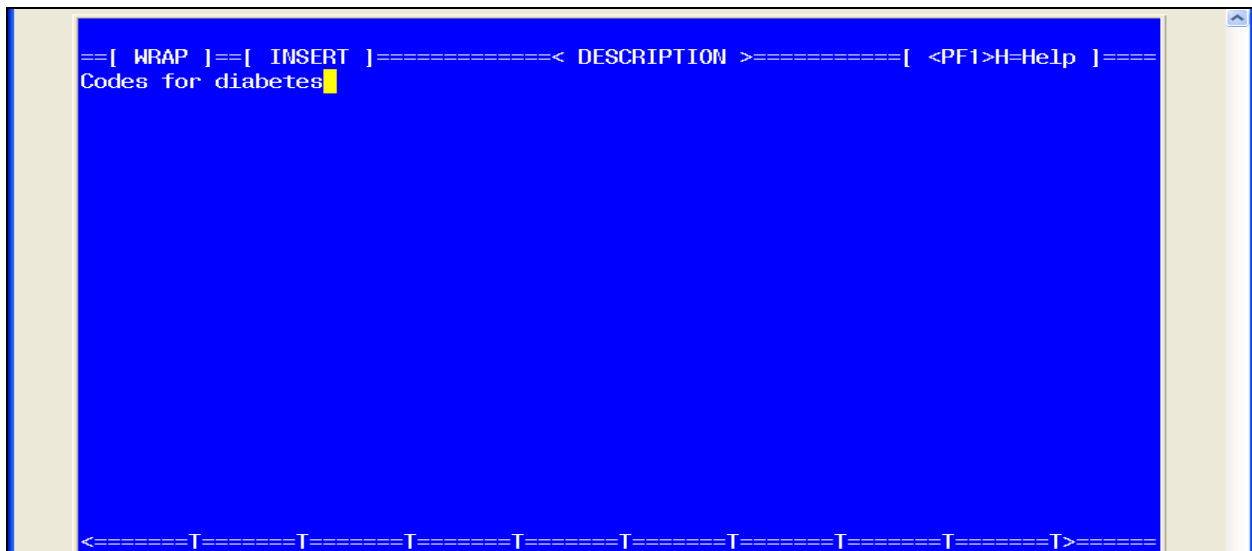


Figure 5: Edit Action Screen

3. Edit fields, as needed. To edit some fields, such as Description, you must press Enter, and then a word-processing screen opens:



- To exit the word-processing screen, press <PF1>E (or the key you've mapped).
- Move down the edit screen by using the down arrow.

## Taxonomy Field Descriptions

These are the fields that you can add information to on the Taxonomy Edit screen.

NAME	DESCRIPTION
NAME	This is the name of the taxonomy. It must be unique. Nationally distributed taxonomies start with "VA-".
DESCRIPTION	Use this word-processing field to give a complete description of the taxonomy. Topics to consider including are what it represents and its intended usage.
PATIENT DATA SOURCE	Specifies where to search in VistA for patient data. It is a string of comma-separated key words. The list of key words is given below.
USE INACTIVE PROBLEMS	Applies only to searches in Problem List. Normally inactive problems are not used. However when this field is set to YES, then both active and inactive problems are used. This field works just like the field with the same name that can be specified for a reminder definition finding or a reminder term finding. If this field is defined in the taxonomy, it will take precedence over the value of the corresponding field at the term or definition level.
PRIORITY LIST	This field applies only to Problem List searches. It can be used to limit the problems that are included to those with the listed priorities. The possible values are: A - acute C - chronic U - undefined Any combination of these letters can be used. For example, 'A' would limit the search to acute problems. 'CU' would include chronic problems and those whose priority is undefined. If this field is left blank then all priorities will be included.
INACTIVE FLAG	Enter "1" to inactivate the taxonomy.
TERM/CODE (multiple)	Term/Code and a Coding System are passed to the Lexicon search utility, which returns a list of codes based on the user's search criteria. Terms are descriptions for a concept and the code is a unique identifier assigned to that description. A concept can have one or more descriptions to express the concept. An example of this in SNOMED CT is the concept code 271807003 that has a fully specified name of "Eruption of Skin", a preferred name of "Eruption" and several synonyms "Rash", "Skin Eruption", "Skin Rash". For more information, see the Lexicon Utility User Manual.
CLASS	This is the class of the entry. Entries whose class is National cannot be edited or created by sites. N - NATIONAL V - VISN L - LOCAL
SPONSOR	This is the name of a group or organization that sponsors the taxonomy.
REVIEW DATE	The review date is used to determine when the entry should be reviewed to verify that it is current with the latest standards and guidelines.
CHANGE LOG	If changes were made, the date and the name of the user making the changes will be inserted automatically. You can optionally type in a description of the changes made during the editing session.

### Patient Data Source Keywords

KEYWORD	MEANING
ALL	All sources (default)
EN	All PCE encounter data (CPT-4 & ICD diagnosis)
ENPP	PCE encounter data, principal procedure (CPT-4) only
ENPD	PCE encounter data, principal diagnosis (ICD) only
IN	All PTF inpatient data (ICD diagnosis and procedures)
INDXLS	PTF inpatient DXLS diagnosis (ICD) only
INM	PTF inpatient diagnosis (ICD) movement only
INPD	PTF inpatient principal diagnosis (ICD) only
INPR	PTF inpatient procedure (ICD) only
PL	Problem List (ICD diagnosis and SNOMED-CT)
RA	Radiology (CPT-4) only

You may use any combination of these keywords. An example is EN,RA. This would cause the search to be made in V CPT and Radiology for CPT-4 codes. If PATIENT DATA SOURCE is left blank, the search is made in all the possible sources. You can also use a “-” to remove a source from the list; for example, IN,-INM.

It is important to remember that the link between CPT-4 codes and radiology procedures is maintained by sites. If this linkage is not kept current at your site, then the recommendation is **to not use RA** in Patient Data Source. It will be much more reliable to use radiology procedures directly as findings.

NAME: JGTAXONOMY1

DESCRIPTION:

PATIENT DATA SOURCE:

USE INACTIVE PROBLEMS:      PRIORITY LIST:

INACTIVE FLAG:

Term/Code      Selected Codes (CODESYS:QTY)

250      None

CLASS: LOCAL

SPONSOR:

REVIEW DATE:

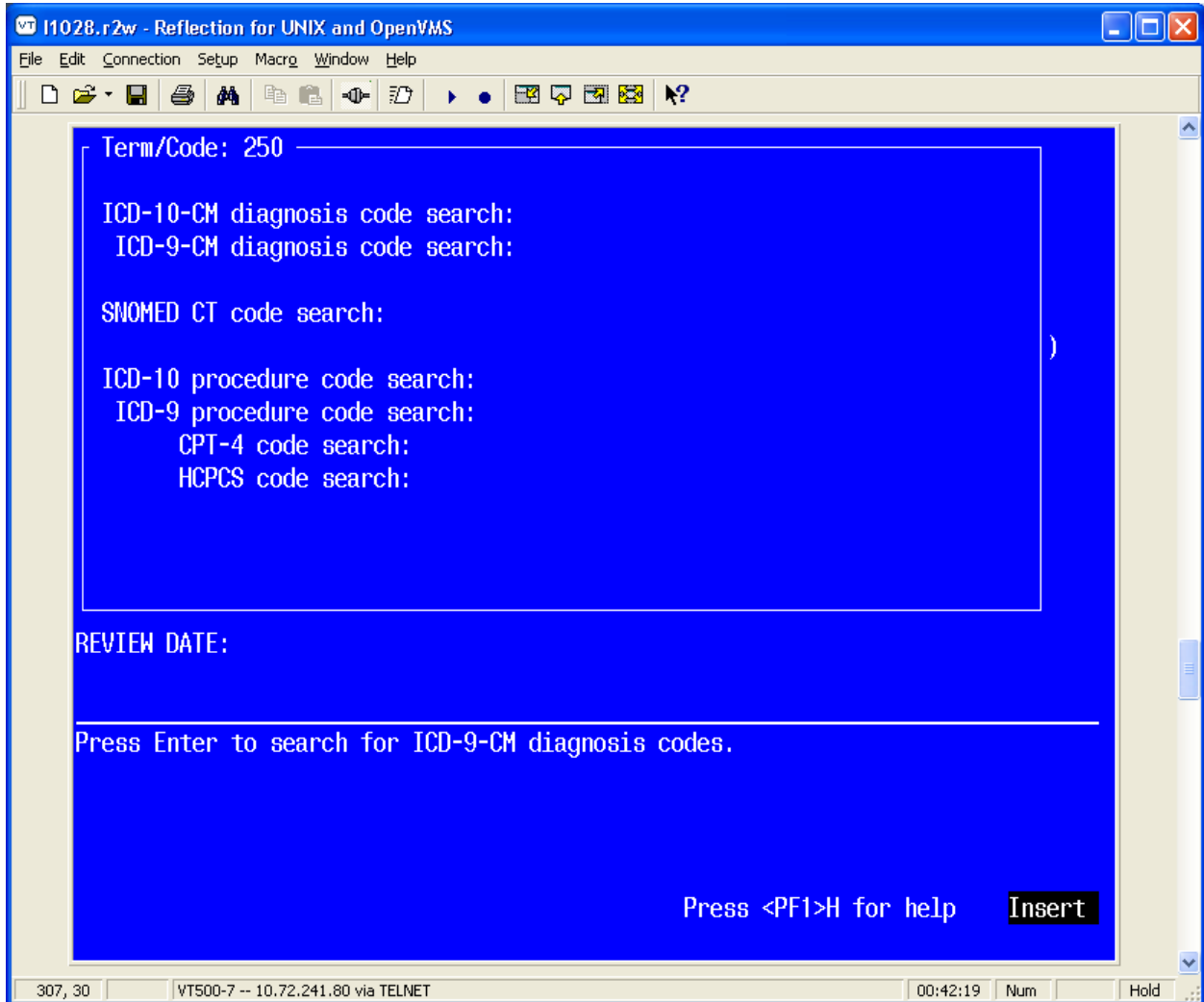
---

COMMAND:      Press <PF1>H for help      Insert

Figure 6: Edit Action Form 2

When you navigate to some of the fields on the form, you may see help in the command area. If more detailed help is needed, type '?' or '??'.

Term/Code is a multiple of terms, codes, or code fragments that are used for a Lexicon search. In the above example, the code fragment 250 has been entered. When you press Enter, you will be taken to a form where you select the coding system to search.



**Figure 7: Coding System Selection Form**

The top line displays the Term/Code that will be used in the search. You can scroll through the list to select a coding system for the search. When the cursor is on a coding system and you press Enter, the Term/Code and the coding system are passed to the Lexicon search engine, which returns a list of matching codes. The codes are displayed in a List Manager screen. At the top it shows you Term/Code and the number of codes found in the selected coding system.

## Adding or Editing a taxonomy from Dialog View (Dialog Elements)

You may also edit a taxonomy from Dialog Elements/Groups edit.

- TE action
- No Lexicon search function
- Must know specific code(s) to be added
- Only UID codes can be added or deleted

Dialog List		Feb 20, 2014@18:05		Page: 27 of 98	
DIALOG VIEW (DIALOG ELEMENTS)					
+Item	Dialog Name	Dialog type		Status	
371	TX AJM TAXONOMY	Dialog Element			
372	TX ALCOHOL ABUSE CODES	Dialog Element			
373	TX CODES FOR CIRRHOSIS	Dialog Element			
374	TX CODES FOR DEPRESSION, NOT MDD	Dialog Element			
375	TX CODES FOR FLU/PNEUMONIA RISK	Dialog Element			
376	TX CODES FOR MDD	Dialog Element			
377	TX DEPRESSION SCREENING V CODES	Dialog Element			
378	TX DIABETIC DIAGNOSIS CODES	Dialog Element			
379	TX FLU/PNEUMONIA RISK CODES	Dialog Element			
380	TX HEP C CODES	Dialog Element			
381	TX HIV CODES	Dialog Element			
382	TX HYPERTENSION CODES	Dialog Element			
383	TX ICD9 CODES +HX BREAST TUMOR	Dialog Element			
384	TX INJECTION CODE	Dialog Element			
+      + Next Screen    - Prev Screen    ?? More Actions    >>					
AD	Add	PT	List/Print All	QU	Quit
CD	Copy Dialog	INQ	Inquiry/Print		
CV	Change View	TE	Dialog Taxonomy Edit		
Select Item: Next Screen// TE    Dialog Taxonomy Edit					
Select REMINDER TAXONOMY NAME: AJM TAXONOMY					

- A new taxonomy can also be added
- Taxonomy will NOT be added to Finding Item or Additional Finding automatically

+      + Next Screen    - Prev Screen    ?? More Actions    >>					
AD	Add	PT	List/Print All	QU	Quit
CD	Copy Dialog	INQ	Inquiry/Print		
CV	Change View	TE	Dialog Taxonomy Edit		
Select Item: Next Screen// TE    Dialog Taxonomy Edit					
Select REMINDER TAXONOMY NAME: AJM TAXONOMY 2					
Are you adding 'AJM TAXONOMY 2' as a new REMINDER TAXONOMY? No//					

- Must know specific code(s) to be added

Codes Marked as Use in Dialog	Coding System
250.93	ICD-9-CM
<input type="text"/>	<input type="text"/>
<b>CLASS:</b> LOCAL	
SPONSOR:	
REVIEW DATE:	



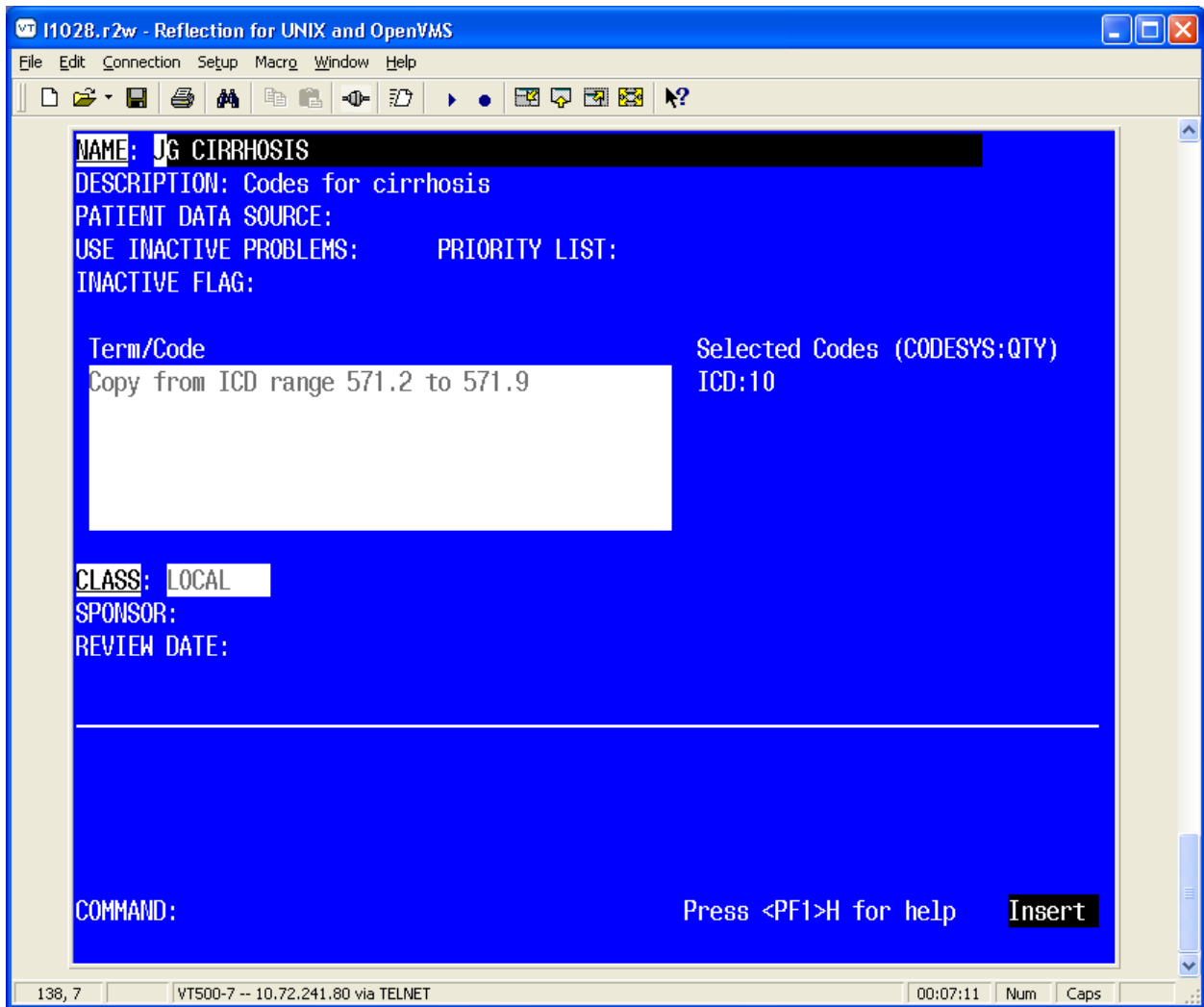


Figure 9: Standard Editing form



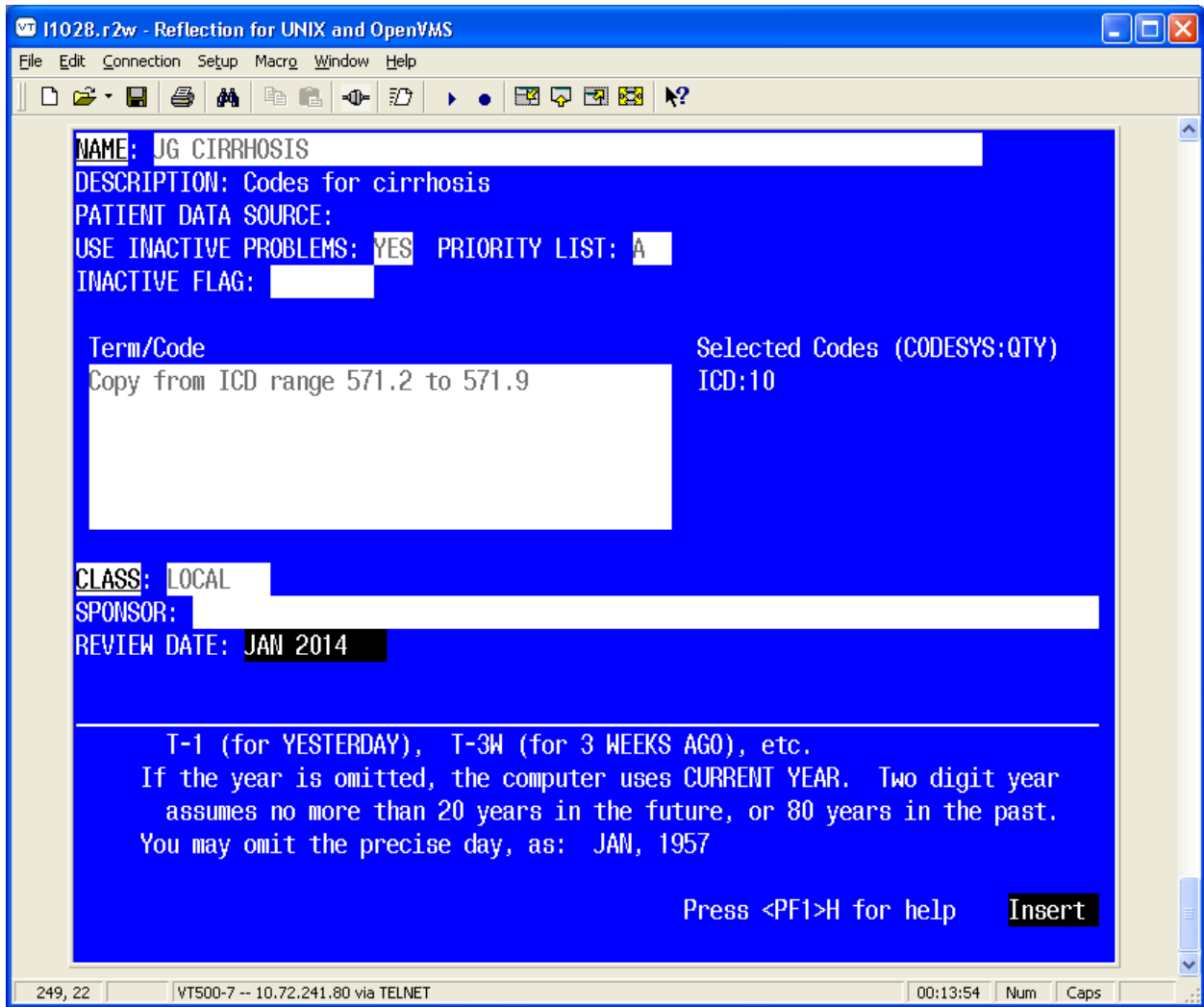
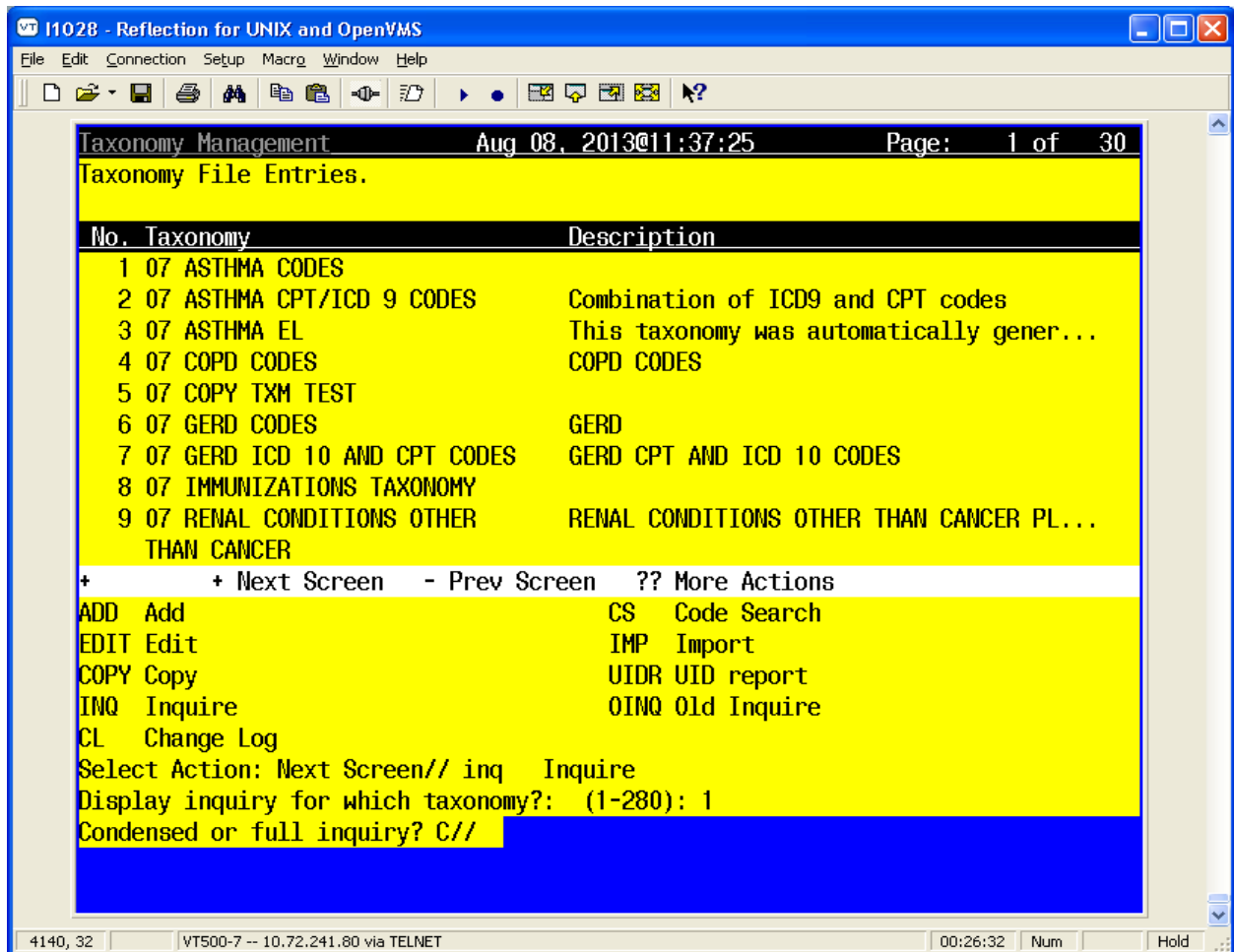


Figure 10: Standard Editing form 2

## Inquire

Use this action to get the details of a single taxonomy.

1. Select the taxonomy.
2. Select Condensed or Full. The condensed displays each code on a single line with a column for code, inactive, UID, and description.
3. Can choose any taxonomy available, not just items that are viewable



NOTE: For taxonomy inquiry print to display properly in Reflections, the setup must have Save from Scrolling Regions checked. The sequence is: Setup => Display => Screen => Display Memory Advanced.

4. Select Browe or Print. You have the option of browsing the output or choosing an output device:

Browse or Print? B//

**Example:**

```
Taxonomy Inquiry - Condensed
-----
07 ASTHMA CODES                                     No. 100
-----

Class: LOCAL
Sponsor:
Review Date: JUN 01, 2014

Description:

Reversible airway disease

Inactive Flag:
Patient Data Source: ALL
Use Inactive Problems:

Selected Codes:

Lexicon Search Term/Code: 493

Coding System: ICD-9-CM
Code      Inactive UID Description
Col> 1 | <PF1>H=Help <PF1>E=Exit| Line> 22 of 43  Screen> 1 of 2
```

- Use (NL) B to navigate to the bottom to see more details.

```
Taxonomy Inquiry - Condensed
Code      Inactive UID Description
-----
493.00    X      --- Extrinsic asthma, unspecified
493.01    X      --- Extrinsic asthma with status asthmaticus
493.02    X      --- Extrinsic asthma, with (Acute) Exacerbation
493.10    X      --- Intrinsic asthma, unspecified
493.11    X      --- Intrinsic asthma with status asthmaticus
493.12    X      --- Intrinsic asthma, with (Acute) Exacerbation
493.20    X      --- Chronic Obstructive asthma, unspecified
493.21    X      --- Chronic obstructive asthma (with obstructive pulmo ...
493.22    X      --- Chronic Obstructive asthma, with (Acute) Exacerbation
493.81    X      --- Exercise Induced Bronchospasm
493.82    X      --- Cough Variant Asthma
493.90    X      --- Asthma, unspecified type, without mention of statu ...
493.90    X      --- Asthma, unspecified Type, unspecified
493.91    X      --- Asthma, unspecified type, with status asthmaticus
493.92    X      --- Asthma, unspecified, with (Acute) Exacerbation

This taxonomy includes the following numbers of codes:
ICD-9-CM: 14
Total number of codes: 14
Col> 1 | <PF1>H=Help <PF1>E=Exit| Line> 43 of 43  Screen> 2 of 2
```

**Figure 11: Browsing Taxonomy Inquiry – Condensed**

**Example 2: Taxonomy Inquiry – Full**

- Use (NL) B to navigate to bottom to see more details

The screenshot shows a terminal-style window titled "Taxonomy Inquiry - Full". The top section displays "07 ASTHMA CODES" with "No. 100" on the right. Below this, several fields are listed: "Class: LOCAL", "Sponsor:", "Review Date: JUN 01, 2014", "Description: Reversible airway disease", "Inactive Flag:", "Patient Data Source: ALL", "Use Inactive Problems:", "Selected Codes:", and "Lexicon Search Term/Code: 493". The "Coding System" is identified as "ICD-9-CM".

A table header is shown with columns: Code, Activation, Inactivation, UID, and Description. The first row of the table is highlighted, showing "Col> 1 |<PF1>H=Help <PF1>E=Exit| Line> 22 of 56 Screen> 1 of 3".

The second section of the window shows a list of codes with their activation and inactivation dates and descriptions. The table header is repeated at the top of this section. The first row of the list is highlighted, showing "Col> 1 |<PF1>H=Help <PF1>E=Exit| Line> 44 of 56 Screen> 2 of 3".

Code	Activation	Inactivation	UID	Description
493.00	10/01/1978	10/01/2014		Extrinsic asthma, unspecified
493.01	10/01/1978	10/01/2014		Extrinsic asthma with status asthmaticus
493.02	10/01/2000	10/01/2014		Extrinsic asthma, with (Acute) Exacerbation
493.10	10/01/1978	10/01/2014		Intrinsic asthma, unspecified
493.11	10/01/1978	10/01/2014		Intrinsic asthma with status asthmaticus
493.12	10/01/2000	10/01/2014		Intrinsic asthma, with (Acute) Exacerbation
493.20	10/01/1978	10/01/2014		Chronic Obstructive asthma, unspecified
493.21	10/01/1978	10/01/2014		Chronic obstructive asthma (with obstructive pulmonary disease), with status asthmaticus
493.22	10/01/2000	10/01/2014		Chronic Obstructive asthma, with (Acute) Exacerbation
493.81	10/01/2003	10/01/2014		Exercise Induced Bronchospasm
493.82	10/01/2003	10/01/2014		Cough Variant Asthma
493.90	10/01/1978			Asthma, unspecified type, without mention of status asthmaticus or

**Figure 12: Browsing Taxonomy Inquiry – Full**

## Change Log

Use this action to see the historical details of a taxonomy; i.e., who created, edited, or copied it, and when. You will have the option of browsing the output or choosing an output device:

Browse or Print? B//

### Example: Browsing Taxonomy Change Log

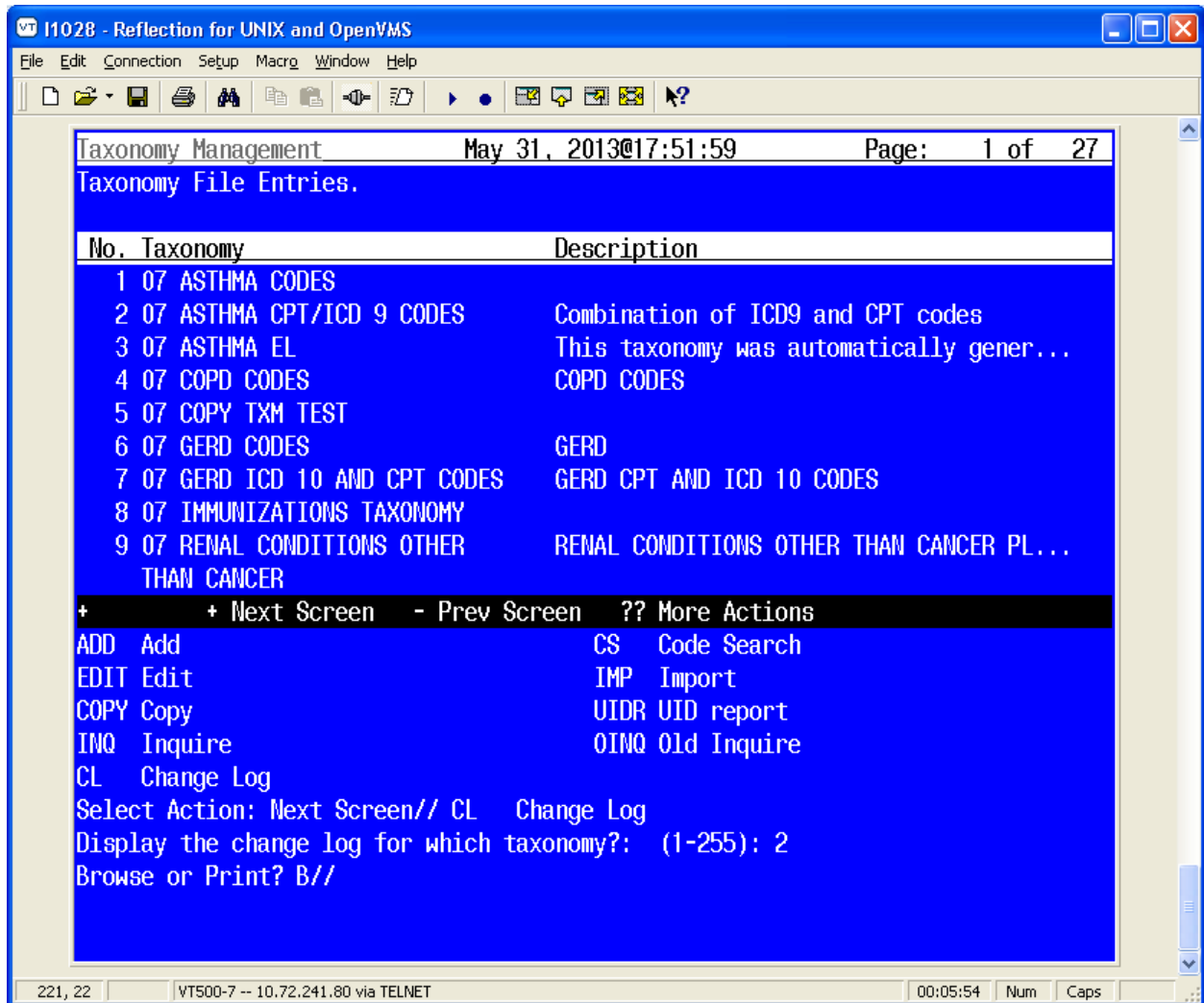


Figure 13: Browsing Taxonomy Change Log



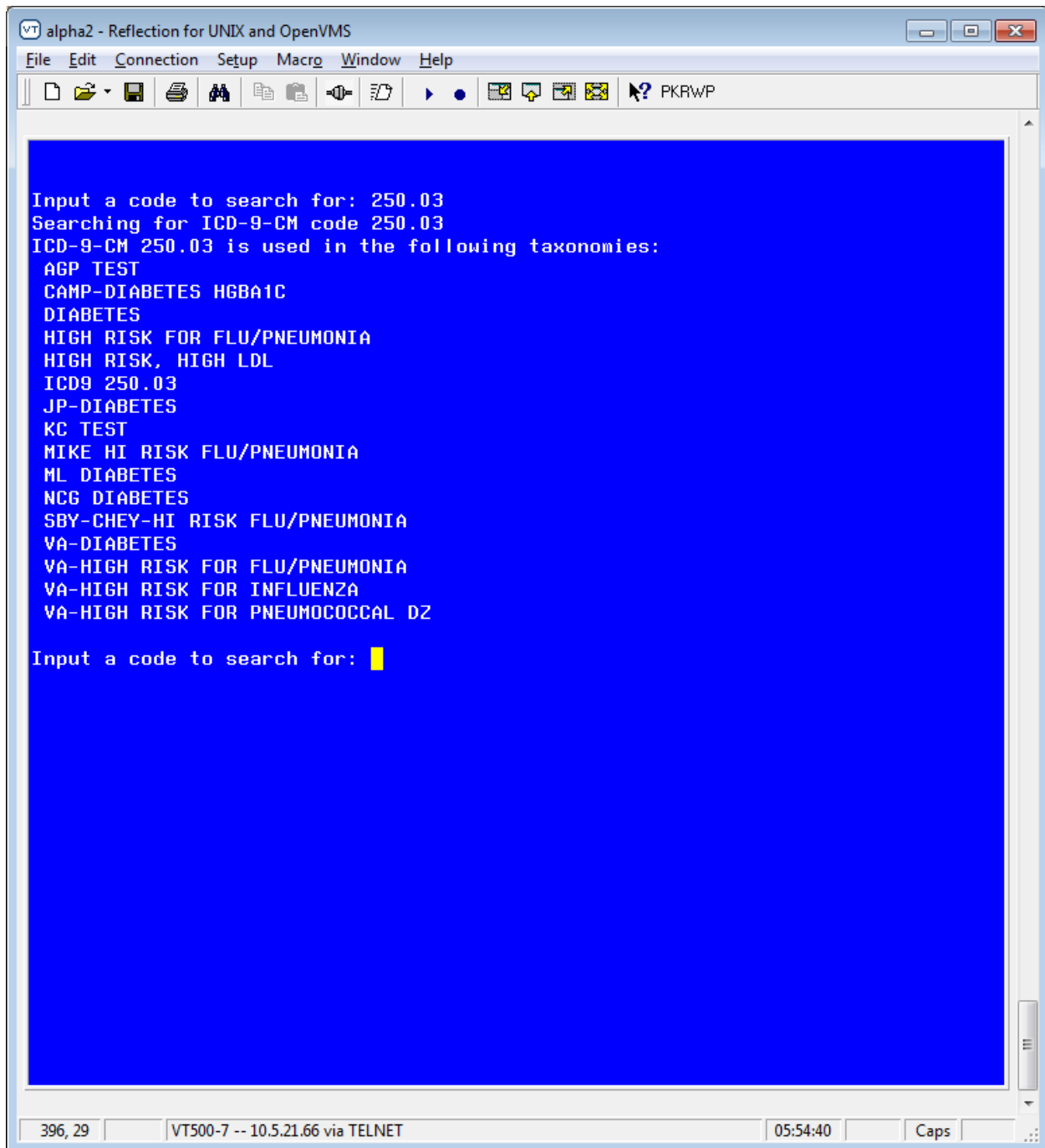


Figure 15: Code Search Results

## Import

The Import action provides an easy way to import lists of codes into a taxonomy.

A CSV file (Comma Separated Values) is created from a spreadsheet. The first column is equivalent to the Term/Code, the second column is the three-character coding system abbreviation for one of the supported coding systems, and the rest of the columns are the codes to be imported for the Term/Code, coding system pair. The spreadsheet can have multiple rows, a row for each Term/Code, coding system, set of codes to be imported. The final step is to create a CSV file (comma-delimited text file), using the Save As action.

**NOTE:** The National Library of Medicine (NLM), in collaboration with the Office of the National Coordinator for Health Information Technology and the Centers for Medicare & Medicaid Services has created a Value Set Authority Center (<https://vsac.nlm.nih.gov/>). These value sets contain lists of terms and their codes and they can be useful for creating taxonomies.

The Import action facilitates their use by allowing import of the codes into a taxonomy. To prepare the data for import, the original spreadsheet should be copied into a new spreadsheet that can be edited. The CSV file should be moved to a directory that can be accessed from the VistA account that contains the taxonomy.

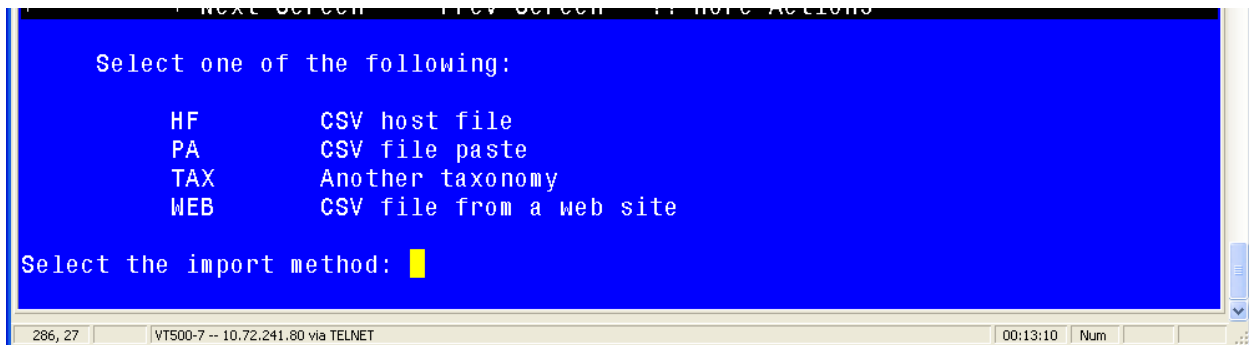
## Example Spreadsheet

	A	B	C	D	E	F	G	H	I	J	K
1	COPD	SCT	413846005	313296004	313299006	135836000	195951007				
2	COPD	10D	J44.9	J44.1	J44.0						
3	COPD	CPC	G8292	G8293	G8924	G8925					
4											
5											
6											
7											
8											

Figure 16: Example Spreadsheet for Importing codes from a CSV file

When the Import action is selected, you will be prompted to select a taxonomy to import into, and after it has been selected, you have the following choices:





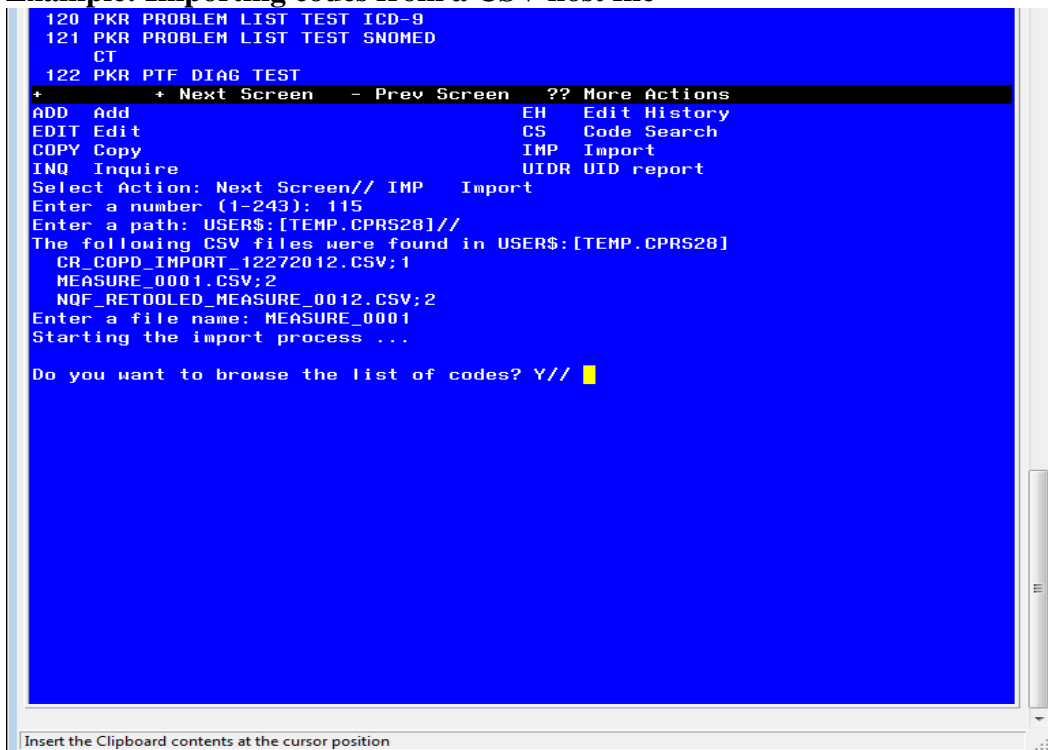
**Figure 17: Selecting Import Method example**

### **Import: CSV Host File**

If the CSV file has been saved as a host file, choose the HF option. You will then be prompted for a path. This is the directory/folder that contains the CSV file and it must be accessible from your VistA session. A list of all files with a '.CSV' extension in that directory will be displayed; enter the file name at the prompt, (you do not need to include the .csv extension).

**NOTE:** Special privileges are required to access host file directories, so you may not be able to use this option.

### **Example: Importing codes from a CSV host file**



**Figure 17: Example for Importing codes from a CSV host file**

At this point you will have the option of browsing the list of codes.

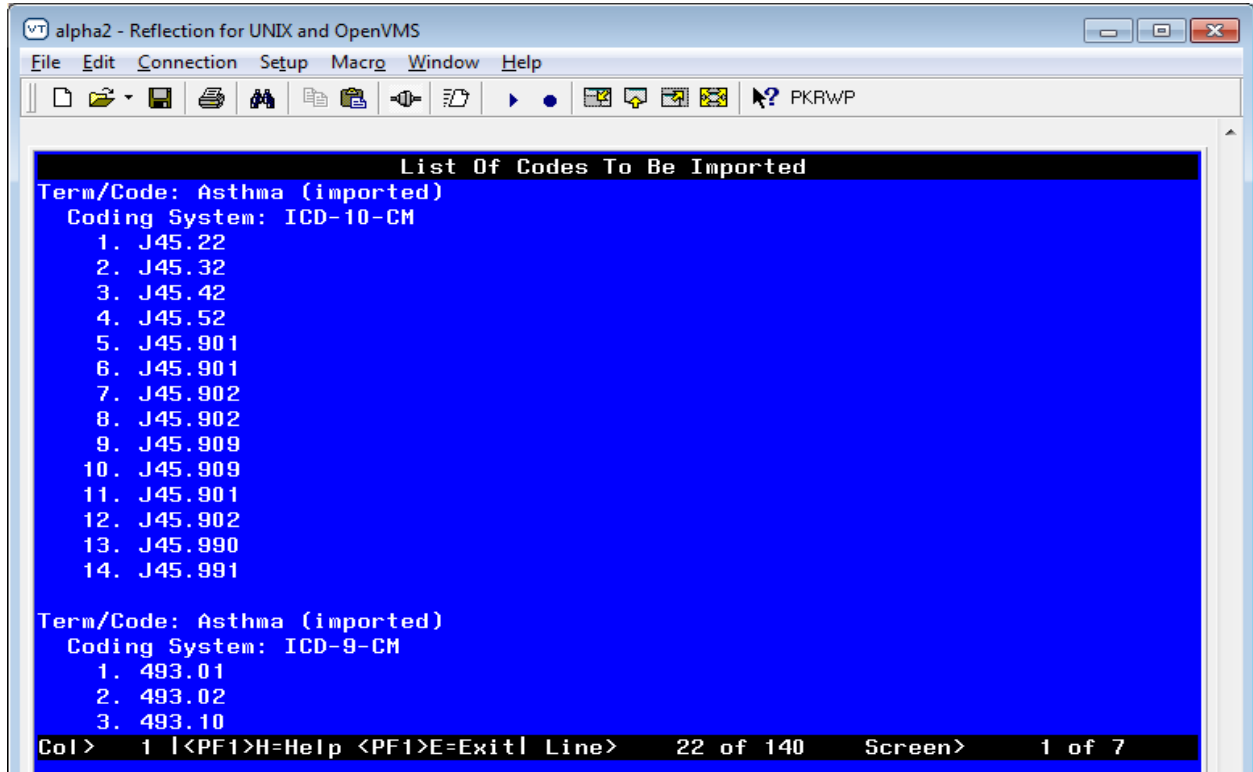


Figure 17a: Example for Importing codes from a CSV host file

```

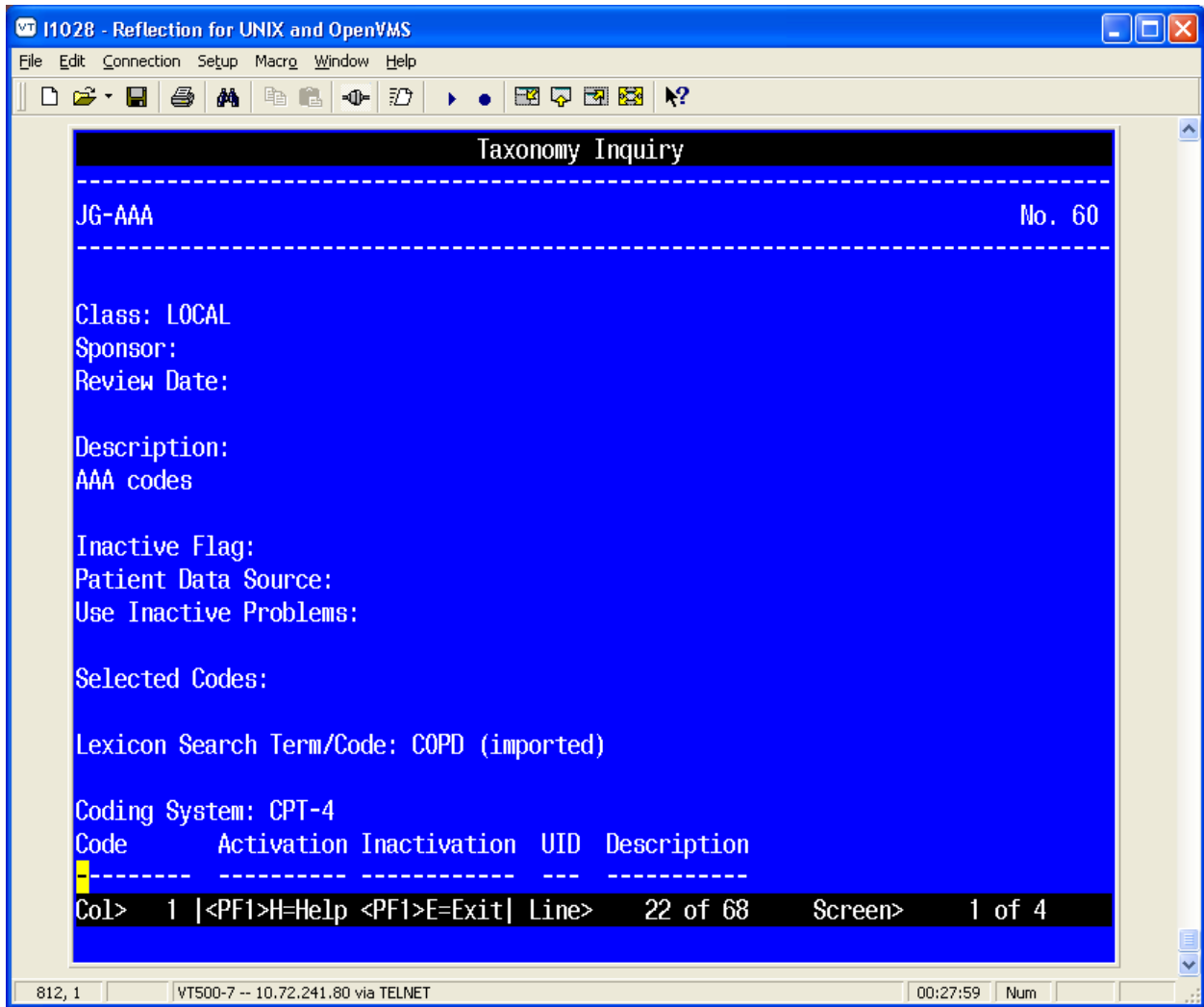
List Of Codes To Be Imported
4. 135836000
5. 195951007

Term/Code: COPD (imported)
Coding System: ICD-9-CM
Invalid coding system code pair:
Coding system is ICD, code is J44.9
Invalid coding system code pair:
Coding system is ICD, code is J44.1
Invalid coding system code pair:
Coding system is ICD, code is J44.0

Term/Code: COPD (imported)
Coding System: CPT-4
1. 1015F

This import includes the following numbers of codes:
CPT-4: 1
ICD-9-CM: 0
SNOMED CT: 5
Total number of codes: 6
Col> 1 |<PF1>H=Help <PF1>E=Exit| Line> 27 of 27 Screen> 2 of 2
668, 1 VTS00-7 -- 10.72.241.80 via TELNET 00:26:48 Num
```

Figure 17b: Example: Browsing list of codes screen



**Figure 17c: Taxonomy Inquire example**

If you are satisfied, then when the Browser is exited, respond yes to this prompt:

**Do you want to save the imported codes? Y//**

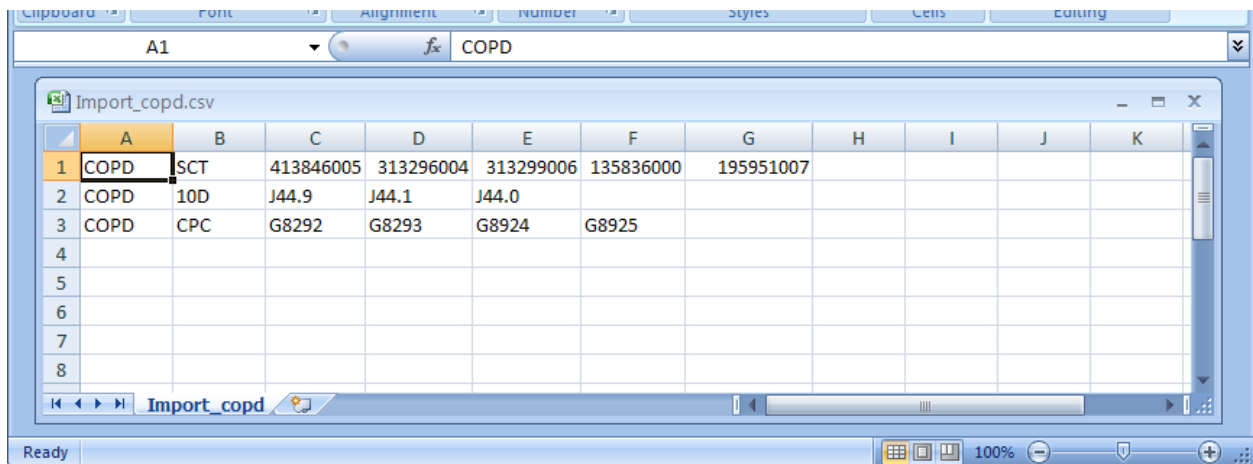
If there are problems with any of the codes, error messages will be displayed.

When the codes are imported into the taxonomy, each Term/Code will have “(imported)” appended to it so that you will know the codes were imported.

### **Import: CSV Paste**

Another way to import a CSV file is the PA option. When you use this option, you open the CSV file on your workstation and copy it.

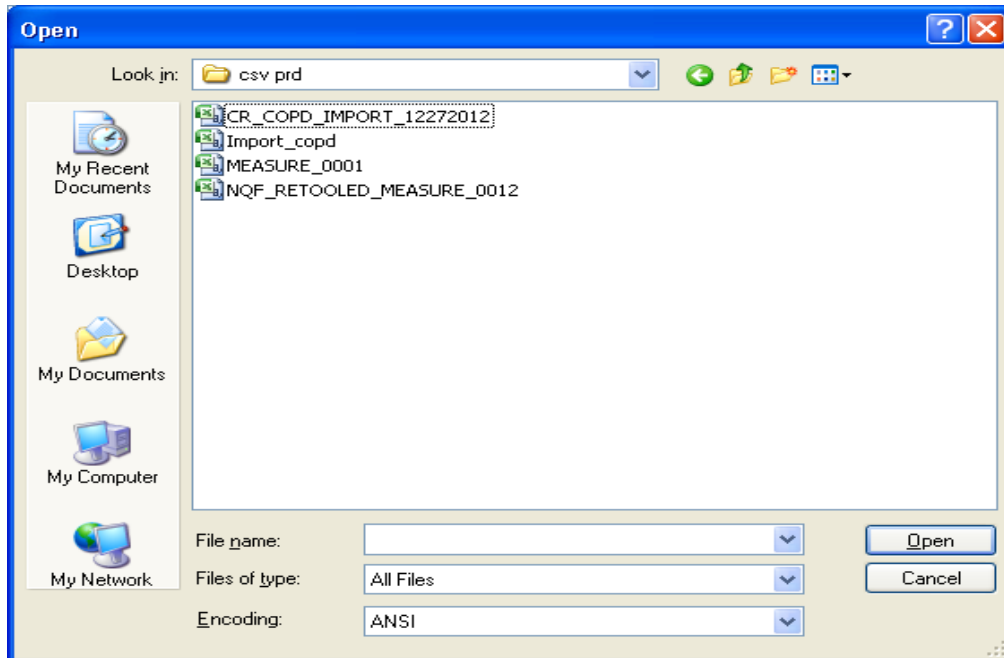
1. Create an Excel Spreadsheet. The first column of the new spreadsheet is equivalent to the Term/Code, the second column is the three-character coding system abbreviation for one of the supported coding systems, and the rest of the columns are the codes to be imported for the Term/Code, coding system pair. The spreadsheet can have multiple rows, a row for each Term/Code, coding system, set of codes to be imported. The final step is to create a CSV file (comma-delimited text file), using the Save As action.



	A	B	C	D	E	F	G	H	I	J	K
1	COPD	SCT	413846005	313296004	313299006	135836000	195951007				
2	COPD	10D	J44.9	J44.1	J44.0						
3	COPD	CPC	G8292	G8293	G8924	G8925					
4											
5											
6											
7											
8											

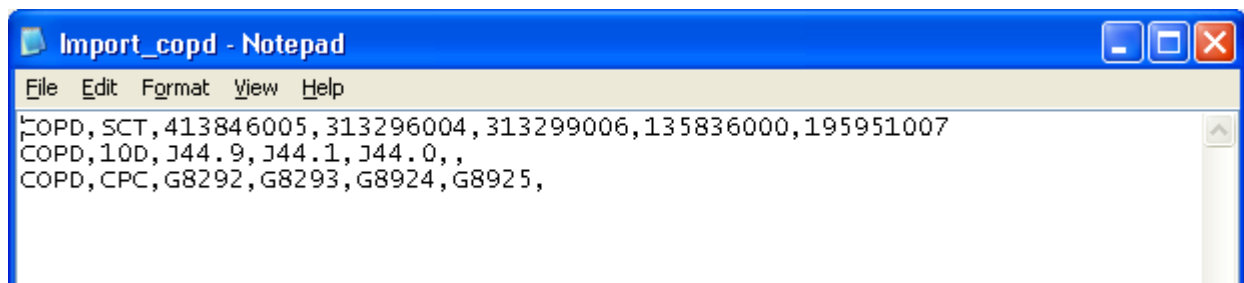
**Figure 18: Excel Spreadsheet with codes**

2. Save the imported files as a CSV.
3. Open the CSV file, as a text file, using a text editor such as Notepad or Microsoft Word. (Select All Files in the Files of type box.)



**Figure 19: Opening spreadsheet as a text file**

4. Open the desired csv file, and copy the contents so they are ready for pasting.



5. In Taxonomy Management, select the action IMP and press enter.
6. At the prompt, enter the number of the Taxonomy that the import file will be imported to.

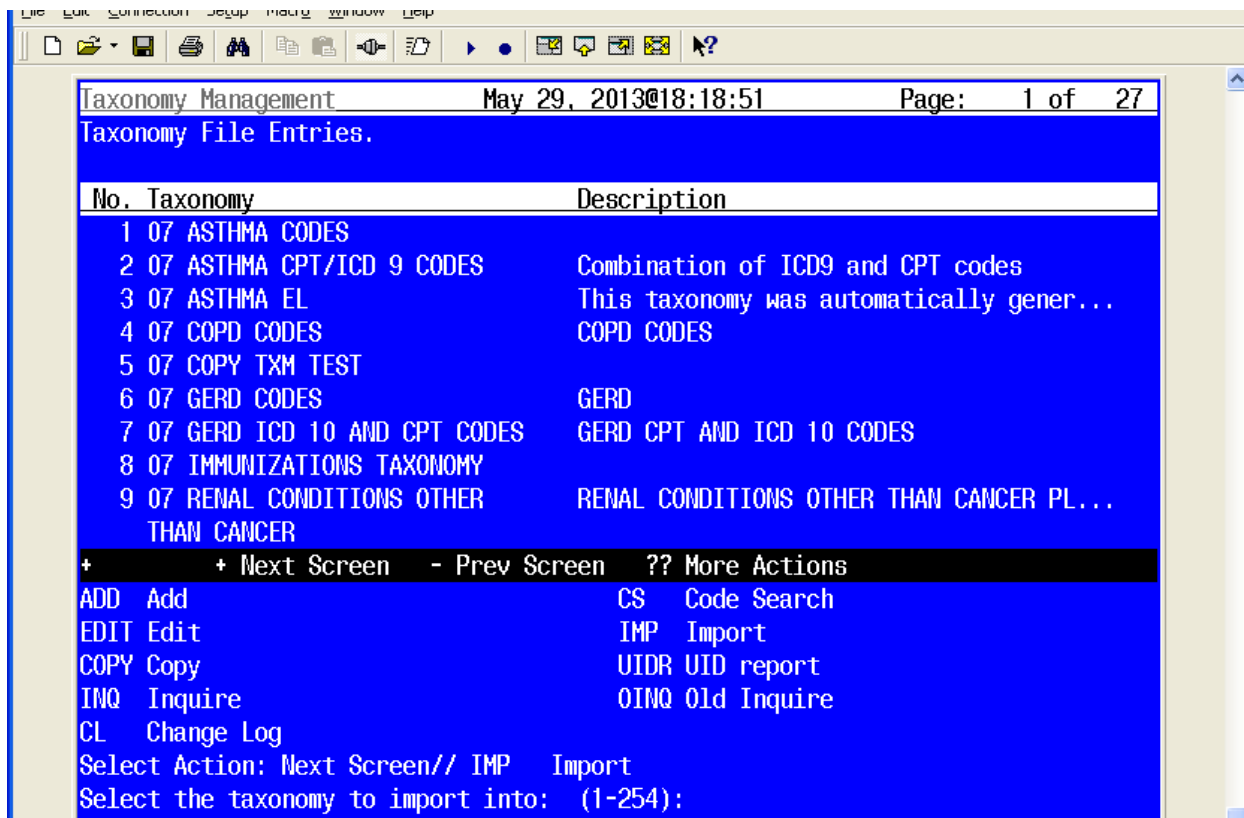


Figure 20: Entering the number of the Taxonomy that the import file will be imported to

7. Select PA for the import method.

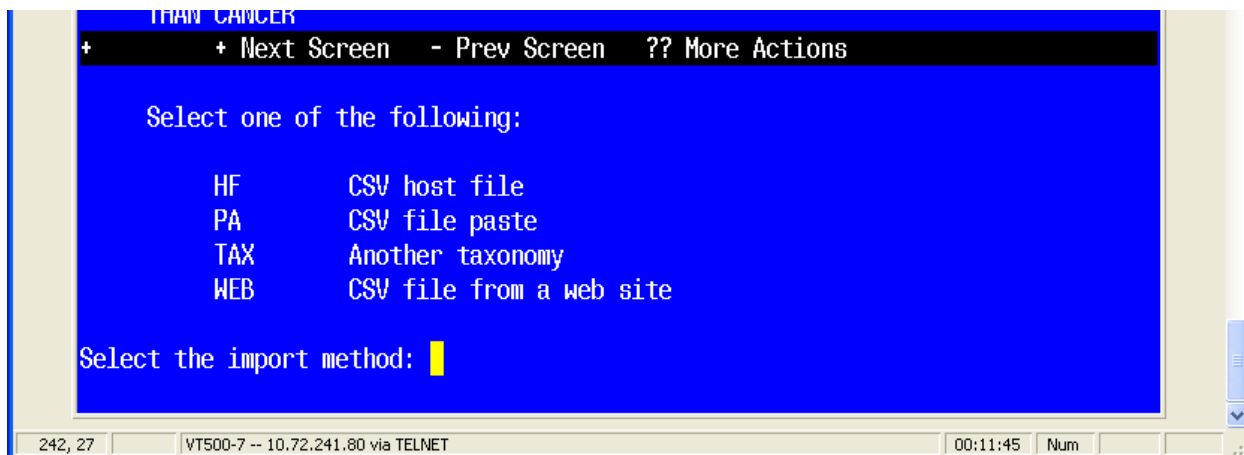
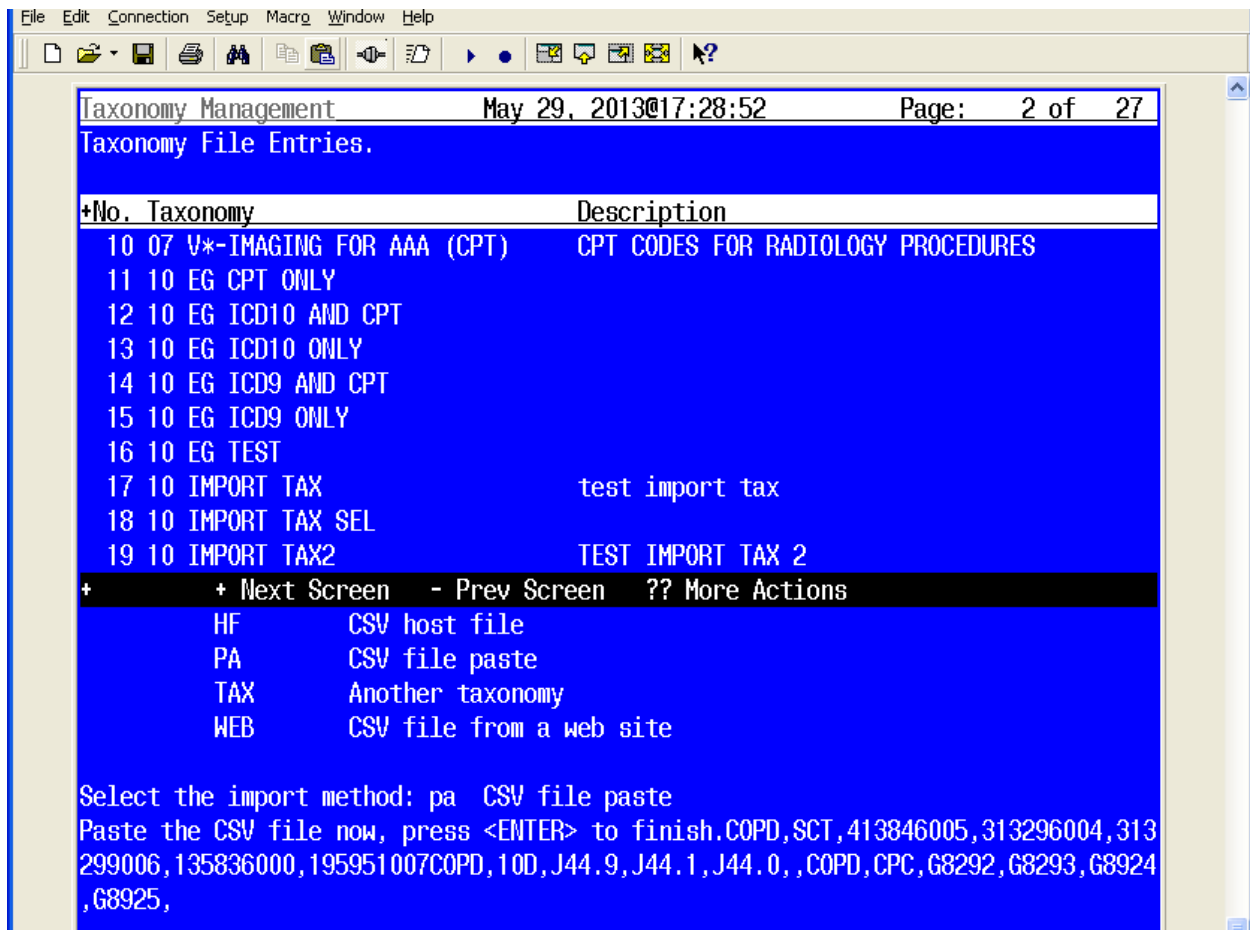


Figure 21: Select PA as the import method

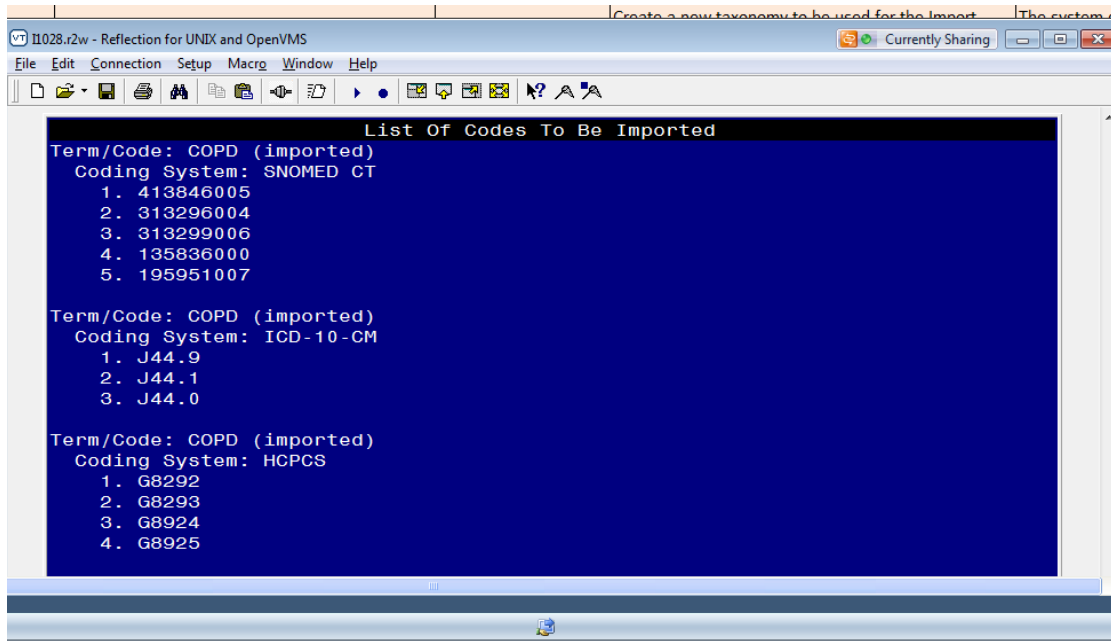
8. At the 'Paste the CSV file now prompt, click on Paste from the file menu (or select the Paste icon) and press <enter> to finish.



**Figure 22: Pasting the CSV file**

- Next you will be given the opportunity to browse the list of codes that will be imported. If you are satisfied with the list, respond 'Y' to the following prompt to import the codes:





**Figure 23: Browsing the list of codes that were pasted**

10. After browsing, you'll be asked if you want to save the codes.

```
Do you want to save the imported codes? Y//
```

11. You can also do an inquiry on the taxonomy you imported the codes into, to verify that these have been entered.

```
+          + Next Screen  - Prev Screen  ?? More Actions
ADD Add          CS Code Search
EDIT Edit       IMP Import
COPY Copy      UIDR UID report
INQ Inquire    OINQ Old Inquire
CL Change Log
Select Action: Next Screen// inq  Inquire
Display inquiry for which taxonomy?: (1-254): 105
```

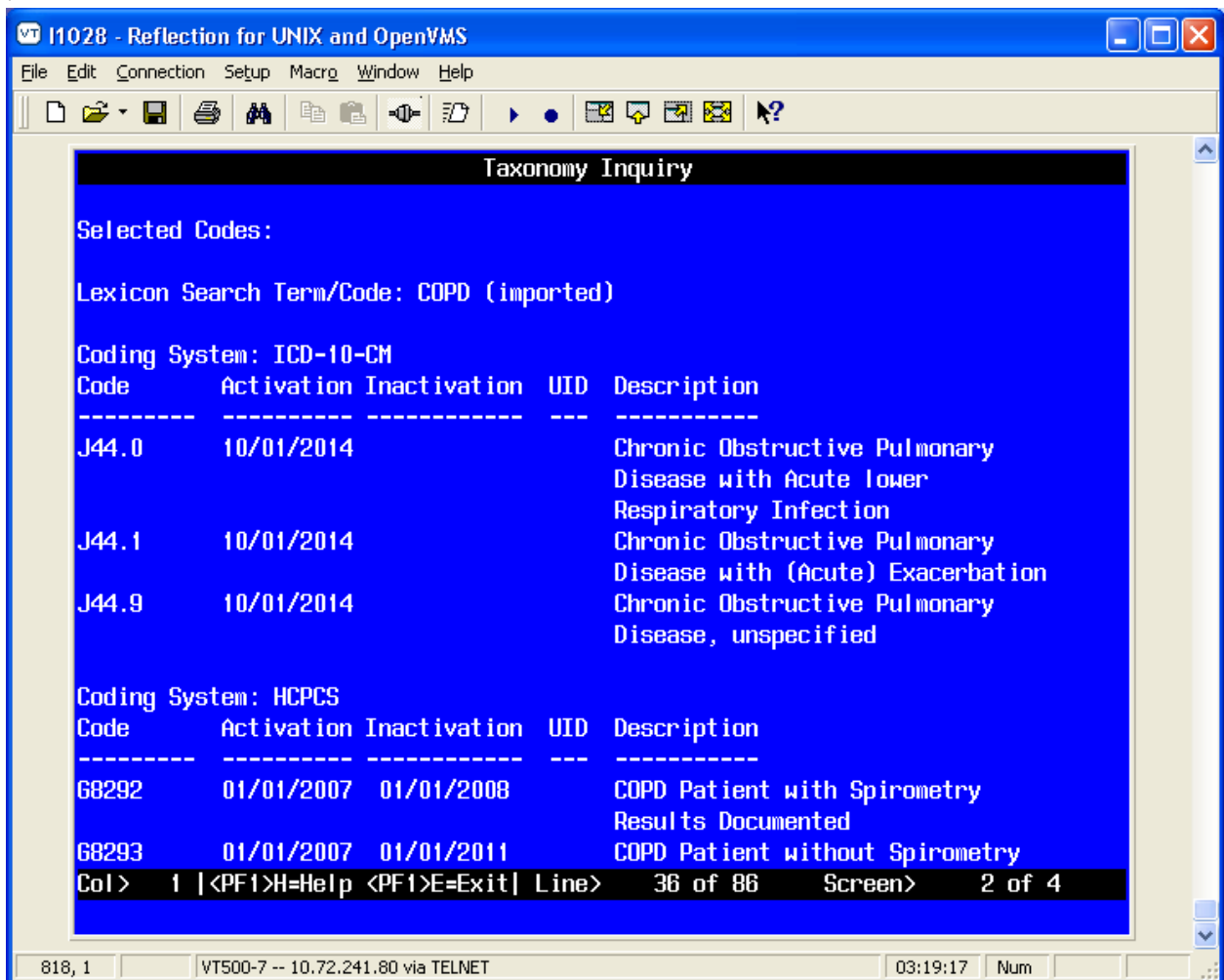


Figure 24: Taxonomy Inquiry of codes that were pasted

## Import – TAX

If you choose the TAX option then you will be presented with a list of all the taxonomies on the system and you can create a list of taxonomies to import codes from.

1. Select Import and then select TAX.

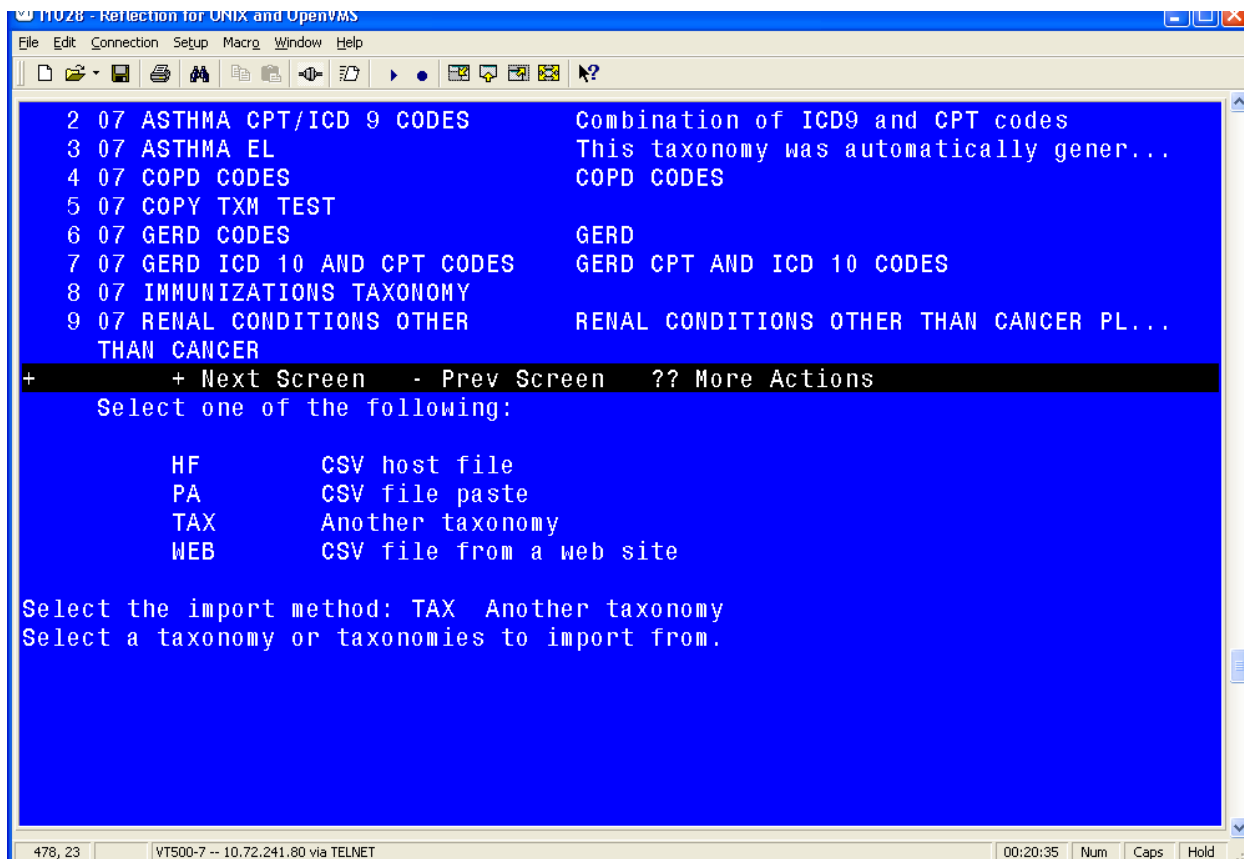


Figure 25: Using the TAX option to import a taxonomy from another taxonomy

2. Select the Taxonomy you wish to copy.

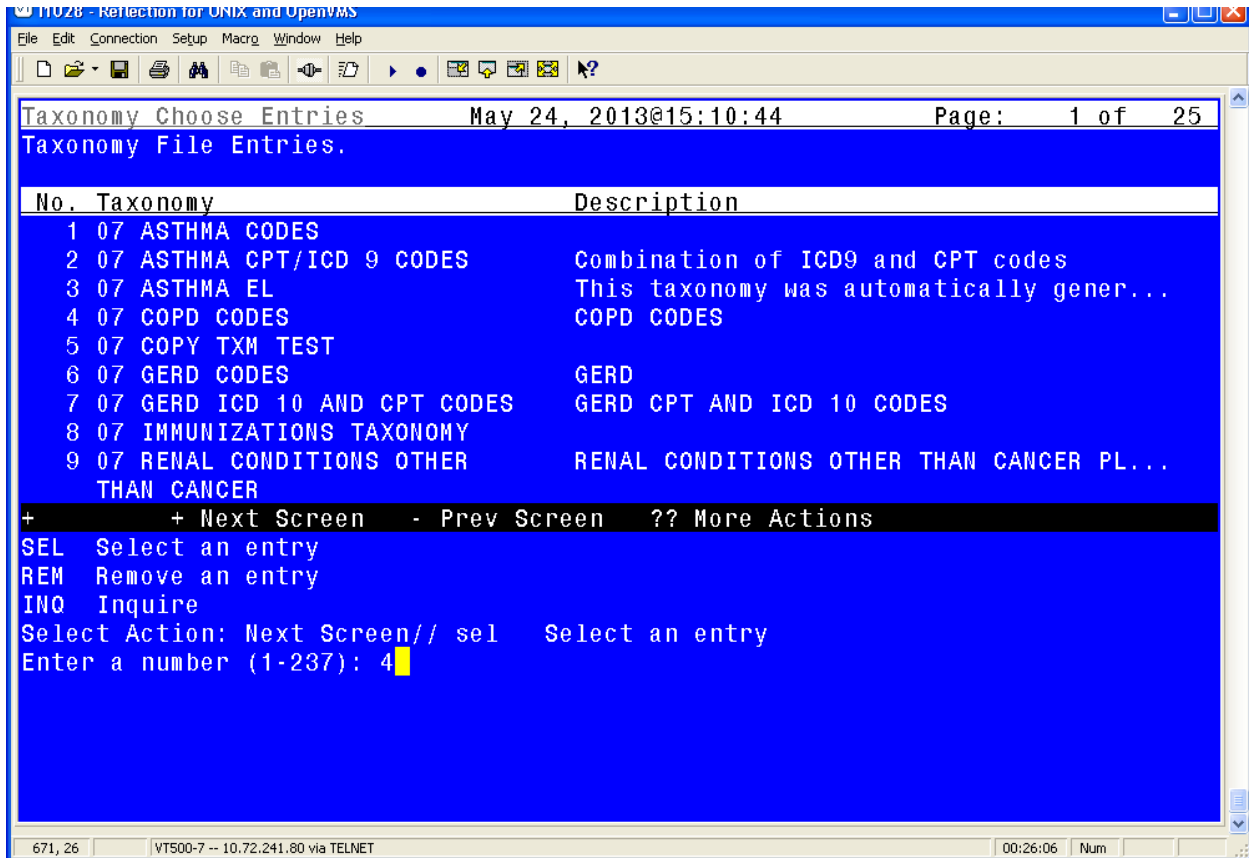
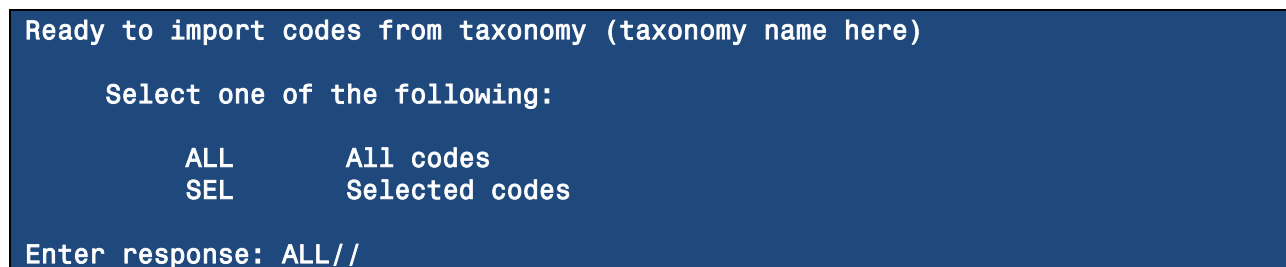


Figure 26: Selecting another taxonomy to import from

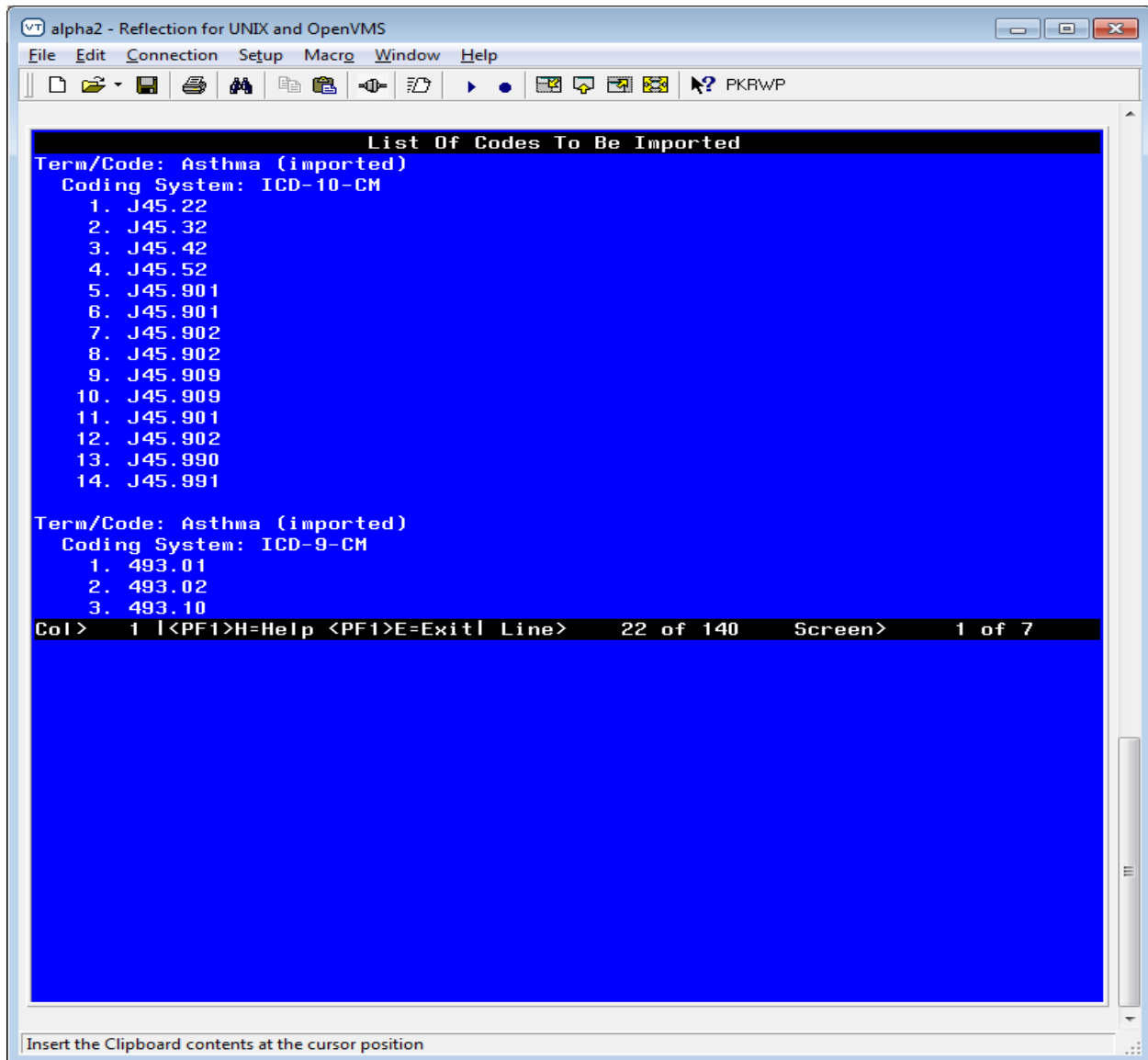
The SEL action adds a taxonomy to the list and the REM action removes it from the list.

3. Once the list is built use the DONE action. You will then see the following prompt for each selected taxonomy:



ALL will import all the codes and SEL will walk you through each Term/Coding System combination in the taxonomy and allow you to choose whether or not to import it.

4. At this point you will have the option of browsing the list of codes.



**Figure 27: Browsing list of codes screen**

5. If you are satisfied, then when the Browser is exited, respond yes to the prompt “Do you want to save the imported codes?”

If there are problems with any of the codes, error messages will be displayed.

When the codes are imported into the taxonomy, each Term/Code will have “(imported)” appended to it so that you will know the codes were imported.

## WEB: Importing a CSV file from a web site

Some sites may find it useful to store their CSV files on a web location. If so, you can use the Import/Web action to import the file.

1. Select Import and then WEB.
2. Enter the url.

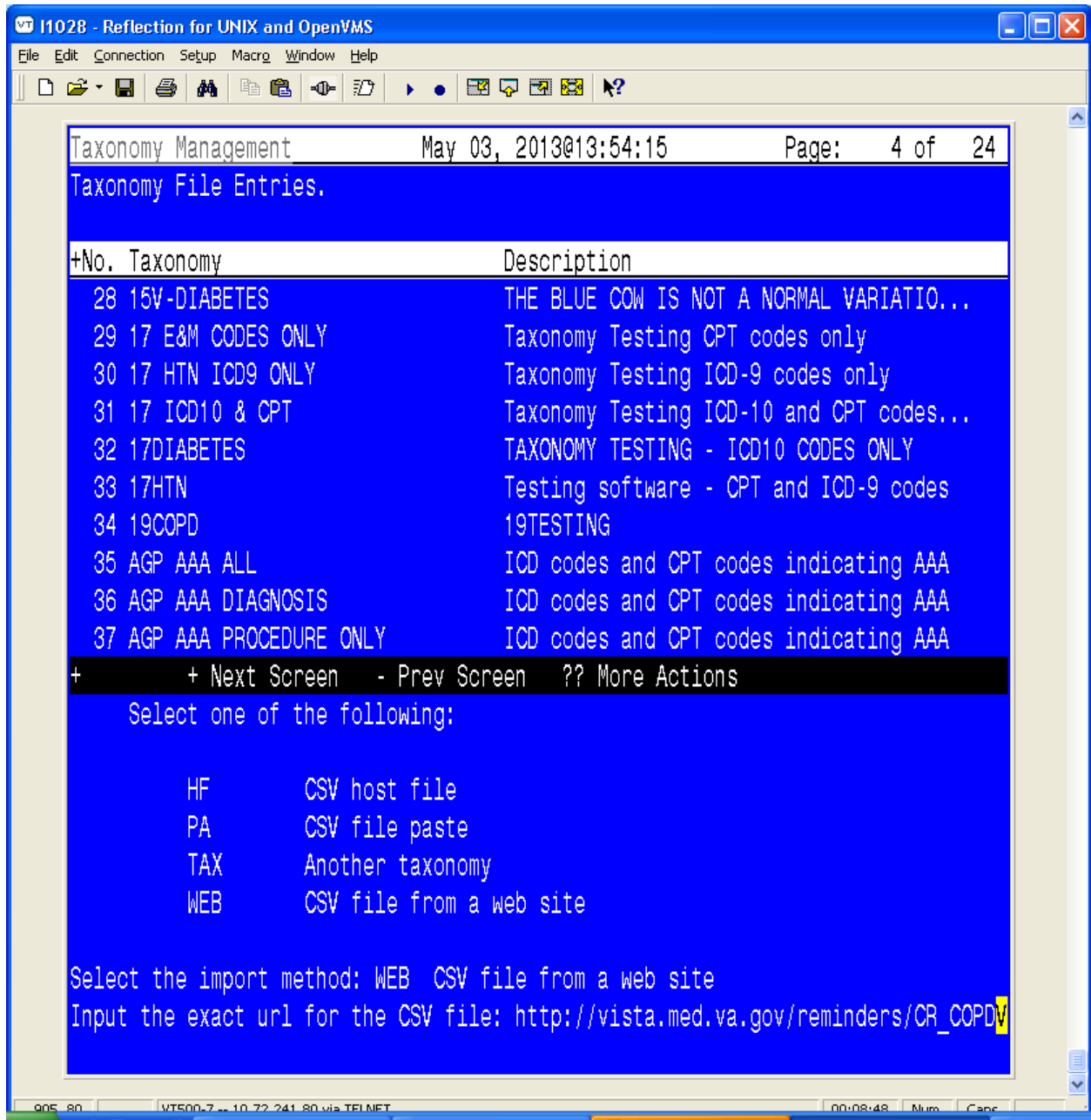


Figure 28: Importing a taxonomy from a web site

Hint - If you have the url copied to the clipboard you can paste it at the Input prompt.

3. The codes are imported. Messages about Invalid coding system pair indicate.....

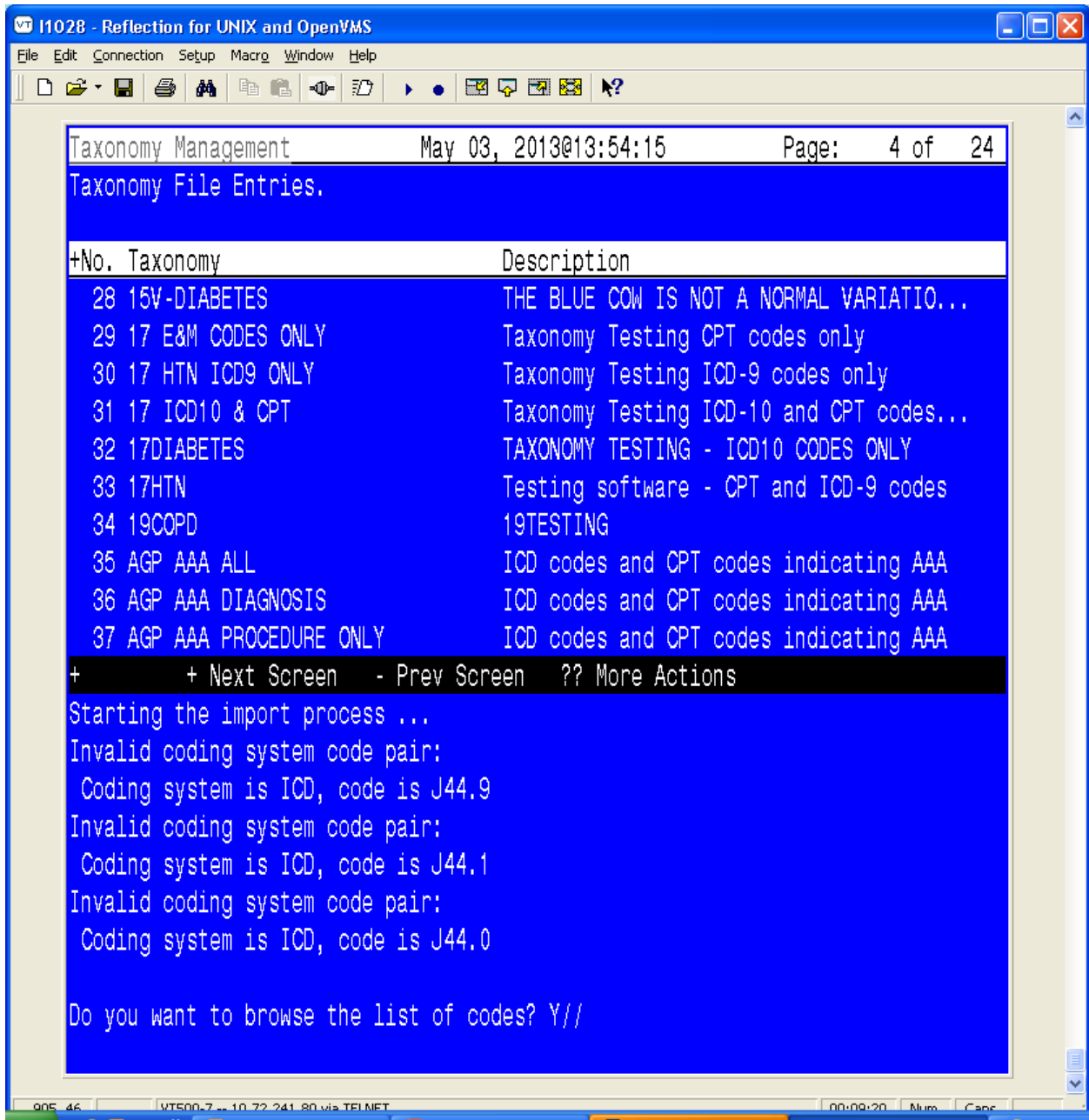
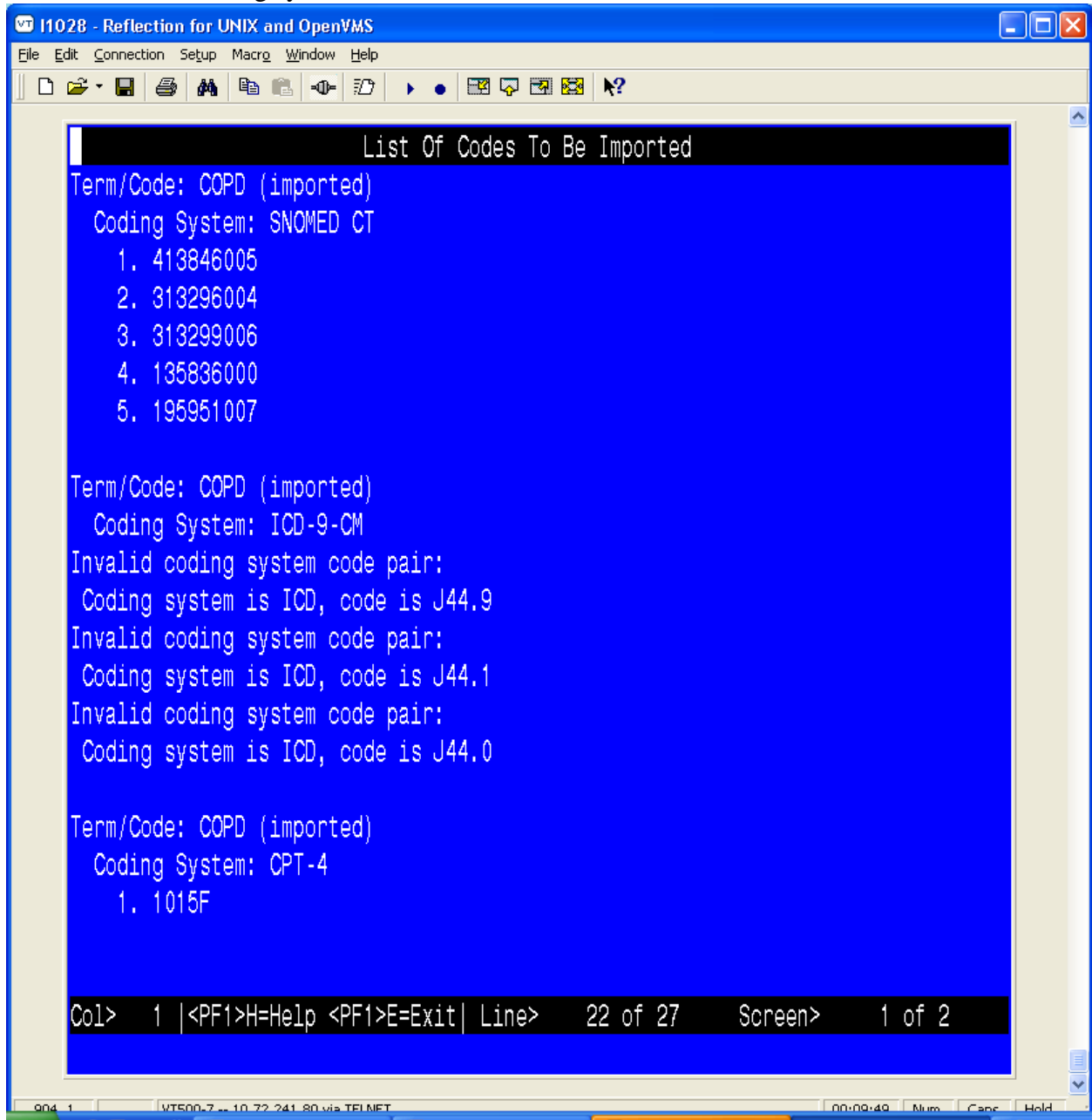


Figure 29: Starting the import process

4. If you choose to browse the list of codes, you'll see the codes that are imported for different coding systems:



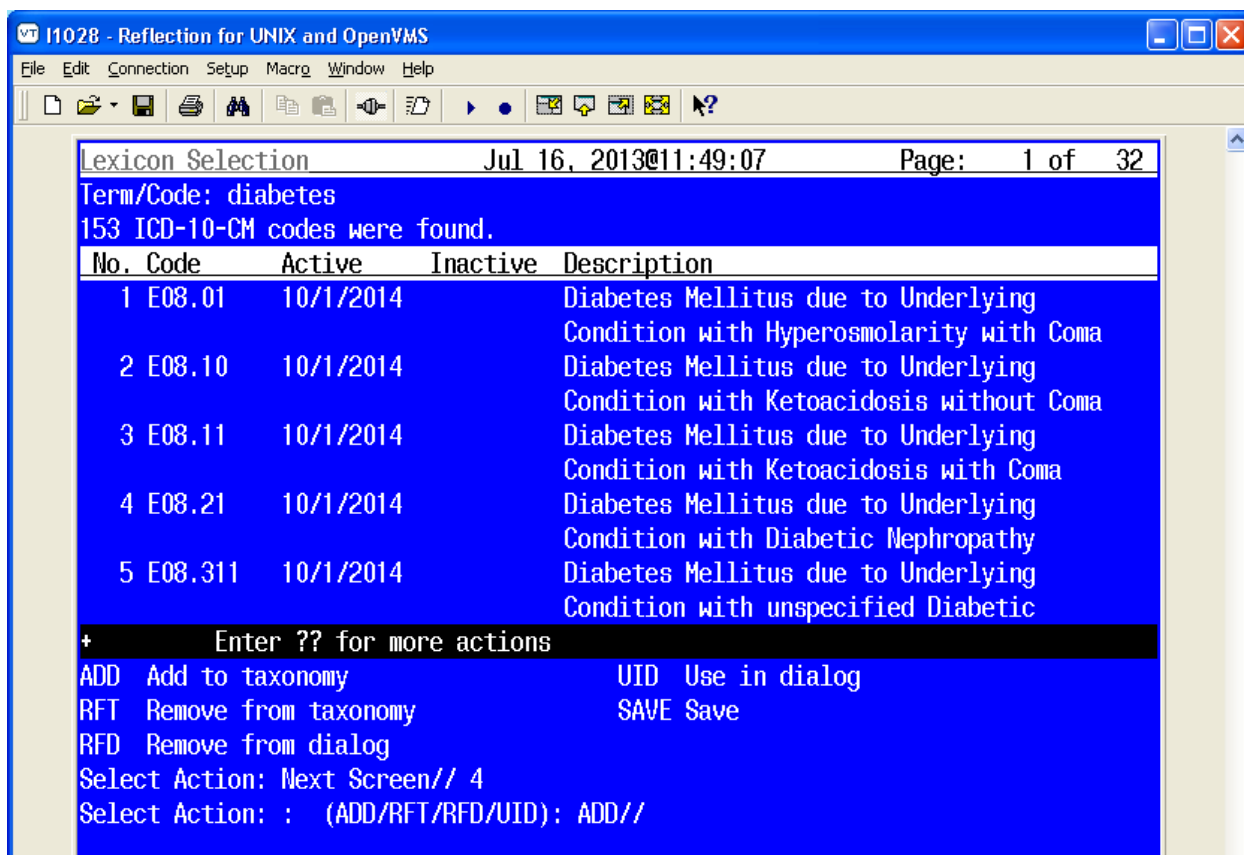
**Figure 30: Browsing the list of codes imported from a website**



## Use in Dialog Report

The Use in Dialog Report searches all taxonomies for inactive codes that are marked as Use in Dialog. If any of these are found, the Browser will display the taxonomies and information about the inactive code(s) they contain.

1. Select UID for Use in Dialog Report from the Lexicon Selection screen:



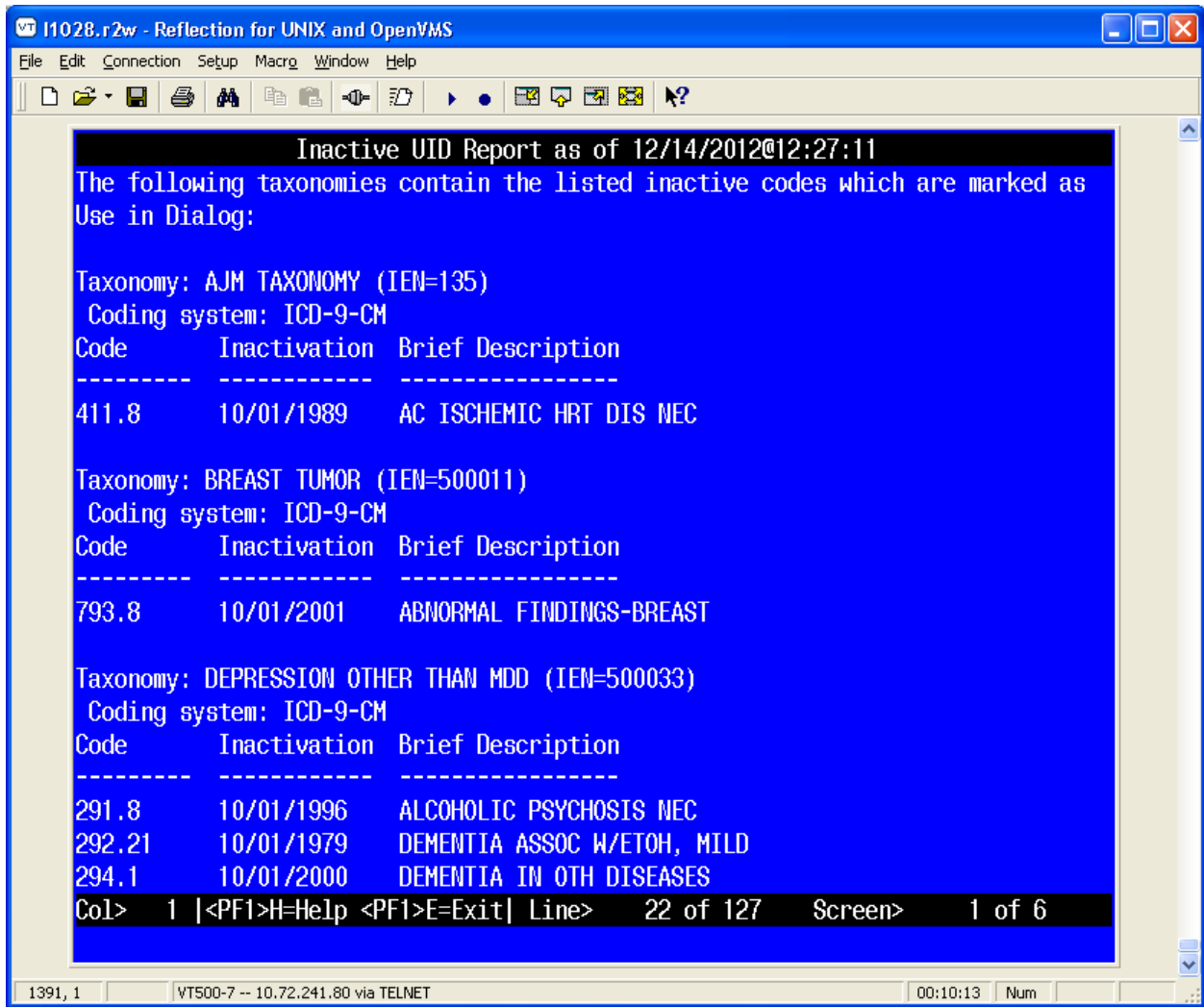


Figure 31: Browsing Use in Dialog Report

## 6. Using Reminder Dialogs Taxonomy Features

### 6.1. Background – Before and After

*Before PXR\*2\*26*, users created Reminder Dialogs by adding individual ICD-9-CM and/or CPT-4 codes. When using codes as Finding Items or Additional Finding Items in CPRS, the end user didn't select codes; codes were automatically filed to VistA when the element/group was selected in the Reminder Dialog. If the Reminder Dialog was set up to use a Taxonomy, it could only be used as a Finding Item; it created a pick list of codes for the user to pick from in CPRS.

The display in CPRS was controlled by the set-up in the Reminder Finding Parameter File (#801.45) and the Reminder Taxonomy File (#811.2). These controls determined if the Taxonomy should assign codes to the current encounter or an historical encounter and what prompts should be assigned to the Reminder Dialog in CPRS.

*After PXR\*2\*26*, users will no longer be able to add ICD-9-CM and/or CPT-4 codes to a Reminder Dialog. Users will need to create a Taxonomy, assign codes, and then add the Taxonomy to the Reminder Dialog. To maintain similar end user functionality in CPRS, a new prompt called Taxonomy Pick List Display has been added to the dialog editor. This controls how Taxonomies should display in CPRS.

### 6.2. Dialog Taxonomy Editor

A simple taxonomy editor is available. It is accessed from dialog management (either the element or group view). Codes added in this editor are automatically marked as Use In Dialog. If a code is deleted in this editor, the Use In Dialog designation is removed from the code.

Dialog List		Aug 08, 2013@12:07:04		Page: 1 of 15	
REMINDER VIEW (ALL REMINDERS BY NAME)					
Item	Reminder Name	Linked Dialog Name & Dialog Status			
1	14HTN (TESTING)				
2	15 REMINDER DIALOG TESTS	15 TESTING DIALOG			
3	15V-DIABETES TX TEST				
4	AJM TAXONOMY	AJM TAXONOMY			
5	ARD 00 ANTICOAGULATION AFIB				
+ Enter ?? for more actions >>>					
AR	All reminders	LR	Linked Reminders	QU	Quit
CV	Change View	RN	Name/Print Name		
Select Item: Next Screen// cv Change View					
Select one of the following:					
D	Reminder Dialogs				
E	Dialog Elements				
F	Forced Values				

```

G      Dialog Groups
P      Additional Prompts
R      Reminders
RG     Result Group (Mental Health)
RE     Result Element (Mental Health)

```

TYPE OF VIEW: R// e Dialog Elements

Dialog List Aug 08, 2013@12:07:11 Page: 1 of 98

DIALOG VIEW (DIALOG ELEMENTS)

Item	Dialog Name	Dialog type	Status
1	07 ASTHMA CODES 2 EL	Dialog Element	
2	07 ASTHMA CODES 3 EL	Dialog Element	
3	07 ASTHMA CODES 4 EL	Dialog Element	
4	07 ASTHMA CODES EL	Dialog Element	
5	07 ASTHMA EL	Dialog Element	
6	07 RENAL CONDITIONS EL	Dialog Element	
7	10 EG TEST ELEMENT	Dialog Element	
8	10 ELEMENT ONE MA	Dialog Element	
9	10 NEW ELEMENT MA	Dialog Element	
10	14 NEW ELEMENT TESTING	Dialog Element	
11	15 HYPERLIPIDEMIA CODES	Dialog Element	
12	15 INACTIVE TAXONOMY	Dialog Element	
13	15 TAXONOMY 1 ADDL FINDING	Dialog Element	
14	15 TAXONOMY 1 CPT ONLY	Dialog Element	

+ + Next Screen - Prev Screen ?? More Actions >>>

AD Add PT List/Print All QU Quit

CO Copy Dialog INQ Inquiry/Print

CV Change View TE Dialog Taxonomy Edit

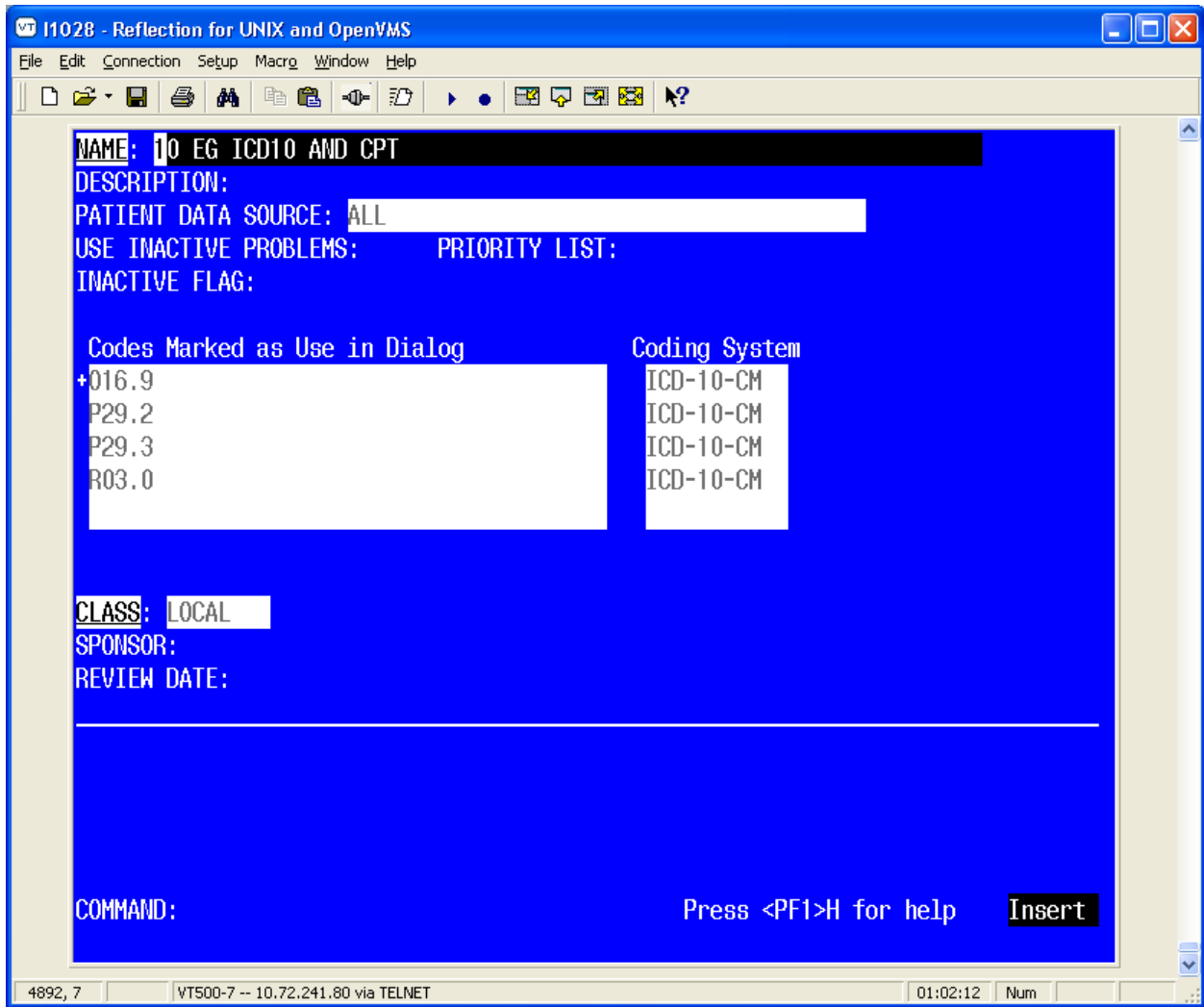
Select Item: Next Screen//

4883, 28 VT500-7 -- 10.72.241.80 via TELNET 00:57:17 Num

```

Select Item: Next Screen// te Dialog Taxonomy Edit
Select REMINDER TAXONOMY NAME: 1
  1  10 EG CPT ONLY LOCAL
  2  10 EG ICD10 AND CPT LOCAL
  3  10 EG ICD10 ONLY LOCAL
  4  10 EG ICD9 AND CPT LOCAL
  5  10 EG ICD9 ONLY LOCAL
Press <RETURN> to see more, '^' to exit this list, OR
CHOOSE 1-5: 2 10 EG ICD10 AND CPT LOCAL

```



## 6.3. New Fields

**Taxonomy Pick List Display** - This field controls if and what pick lists should appear in CPRS. The possible values for the option are based on the setup of the Taxonomy in the Finding Item Field. If a pick list is set to not display, then the active codes marked to be used in a dialog will automatically be filed to PCE for the encounter date for that element when the finish button is clicked. Taxonomies that contain more than one ICD and/or CPT codes

These pick lists are only relevant for the Finding Type field (not Additional Findings field)

- Four choices for display of 'pick list'
  - **ALL** – Displays 2 pick lists for choosing codes
    - One for ICD and one for CPT
  - **DX ONLY** – Displays 'pick list' for ICD only. All CPT codes in taxonomy are entered into PCE
  - **CPT ONLY** – Displays 'pick list' for CPT only. All ICD codes in taxonomy are entered into PCE
  - **NONE** – No 'pick list' for either ICD or CPT. All codes in taxonomy are entered into PCE
- Normally the Default is ALL – this may change.....
- Have to have a choice selected

**Diagnosis Header** = This field displays text that will be used for the Taxonomy Checkbox. The prompt is only available if the Taxonomy Selection Value is set to All. The default value is from the Reminder Finding Type Parameter.

**Procedure Header** = This field displays text that will be used for the Taxonomy Checkbox. The prompt is only available if the Taxonomy Selection Value is set to All.. The default value is from the Reminder Finding Type Parameter.

**Also, after PXR\*2.0\*26, users will no longer be able to set one Taxonomy Element to prompt for both Current and Historical Encounter Data. Users will need to create an element for each encounter type, Current and Historical. If the element Resolution Type is set to Done Elsewhere, then the editor will prompt the user to accept the default prompts for the taxonomy which includes prompts for historical data. prompt for historical data. Any other resolution type or no resolution type will prompt data for the current encounter date.**

For the ICD-10 implementation, Reminder Dialogs will display ICD-9-CM or ICD-10-CM in a pick list based on the code set versioning rules. Reminder Dialogs determine what codes to display using the following rules:

- Current encounters= active codes for that encounter date; Addendums will use the parent note Encounter date.
- Historical encounters= active codes for system date

## 6.4. Examples

A demo Taxonomy that is a copy of VA-ADB AORTIC; this demo has additional codes set to be used in a dialog.

```

-----
AAA TAX DEMO                                     No. 115
-----

Class: LOCAL
Sponsor:
Review Date:

Description:
ICD codes and CPT codes indicating AAA
Inactive Flag:
Patient Data Source:
Use Inactive Problems:

Selected Codes:
  
```

### Lexicon Search Term/Code: Abdominal aortic aneurysm

Coding System: ICD-10-CM				
Code	Activation	Inactivation	UID	Description
-----	-----	-----	---	-----
I71.3	01/01/2012		X	Abdominal Aortic Aneurysm, Ruptured
I71.4	01/01/2012		X	Abdominal Aortic Aneurysm, without Rupture

### Lexicon Search Term/Code: Copy from CPT range 34800 to 34805

Coding System: CPT-4				
Code	Activation	Inactivation	UID	Description
-----	-----	-----	---	-----
34800	01/01/2001		X	Endovascular Repair of Infrarenal Abdominal Aortic Aneurysm or Dissection; using Aorto-Aortic Tube Prosthesis
34802	01/01/2001		X	Endovascular Repair of Infrarenal Abdominal Aortic Aneurysm or Dissection; using Modular Bifurcated Prosthesis (one Docking Limb)
34803	01/01/2005		X	Endovascular Repair of Infrarenal Abdominal Aortic Aneurysm or Dissection; using Modular Bifurcated Prosthesis (two Docking Limbs)
34804	01/01/2001		X	Endovascular Repair of Infrarenal Abdominal Aortic Aneurysm or Dissection; using Unibody Bifurcated Prosthesis
34805	01/01/2004		X	Endovascular Repair of Infrarenal Abdominal Aortic Aneurysm or

Dissection; using Aorto-Uniiliac  
or Aorto-Unifemoral Prosthesis

**Lexicon Search Term/Code: Copy from CPT range 34825 to 34832**

Coding System: CPT-4				
Code	Activation	Inactivation	UID	Description
-----	-----	-----	---	-----
34825	01/01/1989	01/01/1990		Placement of Proximal or Distal Extension Prosthesis for Endovascular Repair of Infrarenal Abdominal Aortic Aneurysm; Initial Vessel
	01/01/2001			Placement of Proximal or Distal Extension Prosthesis for Endovascular Repair of Infrarenal Abdominal Aortic or Iliac Aneurysm, False Aneurysm, or Dissection; Initial Vessel
34826	01/01/1989	01/01/1990		Placement of Proximal or Distal Extension Prosthesis for Endovascular Repair of Infrarenal Abdominal Aortic Aneurysm; each additional Vessel
	01/01/2001			Placement of Proximal or Distal Extension Prosthesis for Endovascular Repair of Infrarenal Abdominal Aortic or Iliac Aneurysm, False Aneurysm, or Dissection; each additional Vessel (List Separately in addition to Code for Primary Procedure)
34830	01/01/2001			Open Repair of Infrarenal Aortic Aneurysm or Dissection, plus Repair of Associated Arterial Trauma, Following Unsuccessful Endovascular Repair; Tube Prosthesis
34831	01/01/2001			Open Repair of Infrarenal Aortic Aneurysm or Dissection, plus Repair of Associated Arterial Trauma, Following Unsuccessful Endovascular Repair;
34832	01/01/2001			Aorto-Bi-Iliac Prosthesis Open Repair of Infrarenal Aortic Aneurysm or Dissection, plus Repair of Associated Arterial Trauma, Following Unsuccessful Endovascular Repair; Aorto-Bifemoral Prosthesis

**Lexicon Search Term/Code: Copy from CPT range 35081 to 35103**

Coding System: CPT-4



Code	Activation	Inactivation	UID	Description
-----	-----	-----	---	-----
35081	06/01/1994			Direct Repair of Aneurysm, Pseudoaneurysm, or Excision (Partial or Total) and Graft Insertion, with or without Patch Graft; for Aneurysm and Associated Occlusive Disease, Abdominal Aorta
35082	06/01/1994			Direct Repair for Ruptured Aneurysm involving the Abdominal Aorta
35091	06/01/1994			Direct Repair of Aneurysm, Pseudoaneurysm, or Excision (Partial or Total) and Graft Insertion, with/without Patch Graft; for Aneurysm and Associated Occlusive Disease, Abdominal Aorta involving Visceral Vessels (Mesenteric, Celiac, Renal)
35092	06/01/1994			Direct Repair for Ruptured Aneurysm involving the Mesenteric, Celiac or Renal Arterial Branch of the Abdominal Aorta
35102	06/01/1994			Direct Repair of Aneurysm, Pseudoaneurysm, or Excision (Partial or Total) and Graft Insertion, with/without Patch Graft; for Aneurysm and Associated Occlusive Disease, Abdominal Aorta involving Iliac Vessels (Common, Hypogastric, External)
35103	06/01/1994			Direct Repair for Ruptured Aneurysm involving the Iliac Vessels (Common, Hypogastric, External) of the Abdominal Aorta

**Lexicon Search Term/Code: Copy from CPT range 75952 to 75953**

Coding System: CPT-4				
Code	Activation	Inactivation	UID	Description
-----	-----	-----	---	-----
75952	01/01/2001			Endovascular Repair of Infrarenal Abdominal Aortic Aneurysm or Dissection, Radiological Supervision and Interpretation
75953	01/01/1989	01/01/1990		Placement of Proximal or Distal Extension Prosthesis for Endovascular Repair of Infrarenal Abdominal Aortic Aneurysm, Radiological Supervision and Interpretation
	01/01/2001			Placement of Proximal or Distal Extension Prosthesis for Endovascular Repair of Infrarenal Aortic or Iliac Artery Aneurysm,

Pseudoaneurysm, or Dissection,  
Radiological Supervision and  
Interpretation

### Lexicon Search Term/Code: Copy from ICD range 441.3 to 441.4

Code	Activation	Inactivation	UID	Description
441.3	10/01/1978	01/01/2012	X	Abdominal aneurysm, ruptured
441.4	10/01/1978	01/01/2012	X	Abdominal aneurysm without mention of rupture

This taxonomy includes the following numbers of codes:

ICD-10-CM: 2

CPT-4: 18

ICD-9-CM: 2

Total number of codes: 22

Below are screen shots of how CPRS will display the taxonomy using different values.

#### Example 1

#### Setting a Taxonomy as a finding item to display pick lists for both I10 and CPT codes, for current encounters only.

```
NAME: AAA DEMO ELEMENT//
DISABLE:
CLASS: L LOCAL
SPONSOR:
REVIEW DATE:
RESOLUTION TYPE:
ORDERABLE ITEM:
FINDING ITEM: TX.AAA TAX DEMO LOCAL
                ...OK? Yes// (Yes)
```

Additional findings: none

Select ADDITIONAL FINDING:

Select one of the following:

A	All
D	ICD Diagnoses Only
P	CPT Procedures Only
N	None

Taxonomy Pick List: A// 11

Diagnosis Header: Diagnosis recorded at encounter. Replace

Procedure Header: done.//

Default prompts for the taxonomy:

Prompt: PXR COMMENT

Prompt: PXR PRIMARY DIAGNOSIS

Prompt: PXR QUANTITY

Prompt: PXR ADD TO PROBLEM LIST

```

Select one of the following:

      Y      Yes
      N      No

Add Prompts to the dialog: Yes//
DIALOG/PROGRESS NOTE TEXT:
  No existing text
  Edit? NO// YES

==[ WRAP ]==[ INSERT ]=====< DIALOG/PROGRESS NOTE TEXT >====[ <PF1>H=Help ]
This taxonomy contains both diagnosis and procedure codes. The dialog is
set to display a pick list for both sets of codes. This dialog is set to
file the codes to the current encounter.
<=====T=====T=====T=====T=====T=====T=====T=====T=====T=====>=====

ALTERNATE PROGRESS NOTE TEXT:
  No existing text
  Edit? NO//
EXCLUDE FROM PROGRESS NOTE:
SUPPRESS CHECKBOX:
Select SEQUENCE: 4//
  SEQUENCE: 4//
  ADDITIONAL PROMPT/FORCED VALUE: PXRMM ADD TO PROBLEM LIST
  //
  OVERRIDE PROMPT CAPTION:
  START NEW LINE:
  EXCLUDE FROM PN TEXT:
  REQUIRED:
Select SEQUENCE:
REMINDER TERM:
Input your edit comments.
Edit? NO//
Select DIALOG to add:  Select the correct AAA codes.

```

With these settings, the user is able to pick from a pick list of diagnoses and procedure codes to add to the current encounter.

The screenshot shows a dialog box with the following elements:

- A checked checkbox with the text: "This taxonomy contains both diagnosis and procedure codes. The dialog is set to display a pick list for both sets of codes. This dialog is set to file the codes to the current encounter."
- A checked checkbox with the text: "Diagnosis recorded at encounter."
- A dropdown menu labeled "Selectable Diagnoses:" with "(None Selected)" selected.
- A text input field labeled "Comment:".
- An unchecked checkbox labeled "Primary Diagnosis" and an unchecked checkbox labeled "Add to Problem List".
- A checked checkbox with the text: "done."
- A dropdown menu labeled "Selectable Procedures: \*" with "(None Selected)" selected.
- A text input field labeled "Comment:".
- A quantity field with a spinner control showing the value "1".

**Example 2**  
**Setting a Taxonomy as a finding item to display pick lists for both I10 and CPT codes for historical encounters only.**

NAME: AAA DEMO ELEMENT//

```
DISABLE:
CLASS: ??
  Enter the class.
  Choose from:
    N      NATIONAL
    V      VISN
    L      LOCAL
CLASS: L  LOCAL
SPONSOR:
REVIEW DATE:
RESOLUTION TYPE:  DONE ELSEWHERE (HISTORICAL)
  ...OK? Yes//   (Yes)

ORDERABLE ITEM:
FINDING ITEM: AAA DEMO
Additional findings: none
Select ADDITIONAL FINDING:

  Select one of the following:

    A      All
    D      ICD Diagnoses Only
    P      CPT Procedures Only
    N      None

Taxonomy Pick List: A// 11
Diagnosis Header: History of Diagnosis.  Replace
Procedure Header: previously done.//
Default prompts for the taxonomy:
Prompt: PXRМ COMMENT
Prompt: PXRМ VISIT DATE
  Required: Yes
Prompt: PXRМ OUTSIDE LOCATION
Prompt: PXRМ PRIMARY DIAGNOSIS
Prompt: PXRМ QUANTITY
Prompt: PXRМ ADD TO PROBLEM LIST

  Select one of the following:

    Y      Yes
    N      No

Add Prompts to the dialog: Yes//
DIALOG/PROGRESS NOTE TEXT:
  No existing text

ALTERNATE PROGRESS NOTE TEXT:
  No existing text
  Edit? NO//
EXCLUDE FROM PROGRESS NOTE:
SUPPRESS CHECKBOX:
Select SEQUENCE: 6//
  SEQUENCE: 6//
  ADDITIONAL PROMPT/FORCED VALUE: PXRМ ADD TO PROBLEM LIST
  //
```

```

OVERRIDE PROMPT CAPTION:
START NEW LINE:
EXCLUDE FROM PN TEXT:
REQUIRED:
Select SEQUENCE:
REMINDER TERM:
Input your edit comments.
Edit? NO//

```

With these settings, the user is able to assign diagnosis and/or procedure codes to a historical encounter. The historical date will be created based on the Date prompt for both the diagnosis and the procedure checkboxes.

This taxonomy contains both diagnosis and procedure codes. The dialog is setup to display pick list for both codes. The dialog is setup to file the codes to an historical encounter.

History of Diagnosis.

Selectable Diagnoses: \* (None Selected) Comment: \_\_\_\_\_

Date: \* \_\_\_\_\_ 2013 ... Location: \_\_\_\_\_ Primary Diagnosis

Add to Problem List

previously done.

Selectable Procedures: \* (None Selected) Comment: \_\_\_\_\_

Date: \* \_\_\_\_\_ 2013 ... Location: \_\_\_\_\_ Quantity: 1

#### Example 4

#### Setting a Taxonomy as a finding item to display pick lists for only diagnosis codes for the current encounters.

```

NAME: AAA DEMO ELEMENT//
DISABLE:
CLASS: L LOCAL
SPONSOR:
REVIEW DATE:
RESOLUTION TYPE:
ORDERABLE ITEM:
FINDING ITEM: TX.AAA TAX DEMO LOCAL
                ...OK? Yes// (Yes)

Additional findings: none
Select ADDITIONAL FINDING:

    Select one of the following:

        A      All
        D      ICD Diagnoses Only
        P      CPT Procedures Only
        N      None

Taxonomy Pick List: A// D ICD Diagnoses Only
Diagnosis Header: Diagnosis recorded at encounter. Replace

```

```

Default prompts for the taxonomy:
Prompt: PXRМ COMMENT
Prompt: PXRМ PRIMARY DIAGNOSIS
Prompt: PXRМ QUANTITY
Prompt: PXRМ ADD TO PROBLEM LIST

    Select one of the following:

        Y          Yes
        N          No

Add Prompts to the dialog: Yes//
DIALOG/PROGRESS NOTE TEXT:
    No existing text
    Edit? NO// YES

==[ WRAP ]==[ INSERT ]===== < DIALOG/PROGRESS NOTE TEXT >====[ <PF1>H=Help ]
This taxonomy contains both diagnosis and procedure codes. The dialog is
set to only display a pick list for diagnosis codes. The dialog is set to
file the codes to the current encounter.

<=====T=====T=====T=====T=====T=====T=====T=====T=====T=====>====

ALTERNATE PROGRESS NOTE TEXT:
    No existing text
    Edit? NO//
EXCLUDE FROM PROGRESS NOTE:
SUPPRESS CHECKBOX:
Select SEQUENCE: 4//
    SEQUENCE: 4//
    ADDITIONAL PROMPT/FORCED VALUE: PXRМ ADD TO PROBLEM LIST
        //
    OVERRIDE PROMPT CAPTION:
    START NEW LINE:
    EXCLUDE FROM PN TEXT:
    REQUIRED:
Select SEQUENCE:
REMINDER TERM:
Input your edit comments.
Edit? NO//

```

With these settings, the user will be able to pick diagnosis codes to add to the current encounter. The active procedure codes that were marked to be used in a dialog will automatically be filed to the current encounter. No historical data will be stored for this element. **Notice there was not a need to add a Diagnosis Header for this scenario.**

This taxonomy contains both diagnosis and procedure codes. The dialog is set to only display a pick list for diagnosis codes. The dialog is set to file the codes to the current encounter.

Selectable Diagnoses: \* (None Selected) Comment:

Primary Diagnosis  Add to Problem List

### Example 5

#### Setting a Taxonomy as a finding item to display pick lists for CPT codes only for the current encounters.

```

NAME: AAA DEMO ELEMENT//
DISABLE:
CLASS: L LOCAL
SPONSOR:
REVIEW DATE:
RESOLUTION TYPE:
ORDERABLE ITEM:
FINDING ITEM: TX.AAA TAX DEMO LOCAL
                ...OK? Yes// (Yes)

Additional findings: none
Select ADDITIONAL FINDING:

    Select one of the following:

        A      All
        D      ICD Diagnoses Only
        P      CPT Procedures Only
        N      None

Taxonomy Pick List: A// P CPT Procedures Only
Procedure Header: done.//
Default prompts for the taxonomy:
Prompt: PXR COMMENT
Prompt: PXR QUANTITY

    Select one of the following:

        Y      Yes
        N      No

Add Prompts to the dialog: Yes//
DIALOG/PROGRESS NOTE TEXT:
    No existing text
    Edit? NO// YES

==[ WRAP ]==[ INSERT ]===== < DIALOG/PROGRESS NOTE TEXT >====[ <PF1>H=Help ]
This taxonomy contains both diagnosis and procedure codes. The dialog is
set to only display a pick list for procedure codes. The dialog is set to
filed the codes to the current encounter.

<=====T=====T=====T=====T=====T=====T=====T=====T=====T=====

```

```

ALTERNATE PROGRESS NOTE TEXT:
  No existing text
  Edit? NO//
EXCLUDE FROM PROGRESS NOTE:
SUPPRESS CHECKBOX:
Select SEQUENCE: 2//
  SEQUENCE: 2//
  ADDITIONAL PROMPT/FORCED VALUE: PXRQ QUANTITY//
  OVERRIDE PROMPT CAPTION:
  START NEW LINE:
  EXCLUDE FROM PN TEXT:
  REQUIRED:
Select SEQUENCE:
REMINDER TERM:
Input your edit comments.
Edit? NO//

```

With these settings, the user will be able to pick the Procedure codes to assign to the current encounter. The active diagnosis codes marked to be used in the dialog will automatically be assigned to the encounter. No historical data will be stored for this element. **Notice there was not a need to add a Diagnosis Header for this scenario.**

This taxonomy contains both diagnosis and procedure codes. The dialog is set to only display a pick list for procedure codes. The dialog is set to file the codes to the current encounter.

Selectable Procedures: \* (None Selected)

Quantity:

### Example 6

#### Setting a Taxonomy as a finding item to display no pick list set to display.

```

NAME: AAA DEMO ELEMENT//
DISABLE:
CLASS: L LOCAL
SPONSOR:
REVIEW DATE:
RESOLUTION TYPE:
ORDERABLE ITEM:
FINDING ITEM: TX.AAA TAX DEMO LOCAL
               ...OK? Yes// (Yes)

Additional findings: none
Select ADDITIONAL FINDING:

  Select one of the following:

      A      All
      D      ICD Diagnoses Only
      P      CPT Procedures Only
      N      None

```



```

Taxonomy Pick List: A// None
DIALOG/PROGRESS NOTE TEXT:
  No existing text
  Edit? NO// YES

==[ WRAP ]==[ INSERT ]=====< DIALOG/PROGRESS NOTE TEXT >====[ <PF1>H=Help ]=
This taxonomy contains both diagnosis and procedure codes. The dialog is
set to not display a pick list. This dialog is set to file codes to the
current encounter.

<-----T-----T-----T-----T-----T-----T-----T-----T-----T>===

ALTERNATE PROGRESS NOTE TEXT:
  No existing text
  Edit? NO//
EXCLUDE FROM PROGRESS NOTE:
SUPPRESS CHECKBOX:
Select SEQUENCE: 1
  ADDITIONAL PROMPT/FORCED VALUE: PXR PRIMARY DIAGNOSIS      prompt
NATIOL
  ...OK? Yes//      (Yes)

  OVERRIDE PROMPT CAPTION:
  START NEW LINE:
  EXCLUDE FROM PN TEXT:
  REQUIRED:
Select SEQUENCE: 5
  ADDITIONAL PROMPT/FORCED VALUE: PXR ADD TO PROBLEM LIST    prompt
NATIONAL
  OVERRIDE PROMPT CAPTION:
  START NEW LINE:
  EXCLUDE FROM PN TEXT:
  REQUIRED:
Select SEQUENCE: 10
  ADDITIONAL PROMPT/FORCED VALUE: PXR QUANTITY                prompt      NATIONAL
  ...OK? Yes//      (Yes)

  OVERRIDE PROMPT CAPTION:
  START NEW LINE:
  EXCLUDE FROM PN TEXT:
  REQUIRED:
Select SEQUENCE: 15
  ADDITIONAL PROMPT/FORCED VALUE: PXR COMMENT                prompt      NATIONAL
  OVERRIDE PROMPT CAPTION:
  START NEW LINE:
  EXCLUDE FROM PN TEXT:
  REQUIRED:
Select SEQUENCE: REMINDER TERM:
Input your edit comments.
Edit? NO//

```

With this setting, all active diagnosis/procedure codes marked to be used in a dialog will automatically be filed to the current encounter.

This taxonomy contains both diagnosis and procedure codes. The dialog is set to not display a pick list. This dialog is set to file codes to the current encounter.

Primary Diagnosis  Add to Problem List  Quantity: 1  Comment:

To set any of the above to filed data for an historical encounter date. The Resolution Type field must be set to Done Elsewhere (Historical)

```
NAME: TAX NEW STRUCTURE ALL HISTORICAL  Replace
DISABLE:
CLASS: L  LOCAL
SPONSOR:
REVIEW DATE:
RESOLUTION TYPE:  DONE ELSEWHERE (HISTORICAL)
                  ...OK? Yes//  (Yes)

ORDERABLE ITEM:
FINDING ITEM:  AAA TAX DEMO  LOCAL
Additional findings: none
Select ADDITIONAL FINDING:

    Select one of the following:

        A      All
        D      ICD Diagnoses Only
        P      CPT Procedures Only
        N      None

Taxonomy Pick List: A// 11
Diagnosis Header: History of Diagnosis.  Replace
Procedure Header: previously done.//
Default prompts for the taxonomy:
Prompt: PXR COMMENT
Prompt: PXR VISIT DATE
    Required: Yes
Prompt: PXR OUTSIDE LOCATION
Prompt: PXR PRIMARY DIAGNOSIS
Prompt: PXR QUANTITY
Prompt: PXR ADD TO PROBLEM LIST

    Select one of the following:

        Y      Yes
        N      No

Add Prompts to the dialog: Yes//
DIALOG/PROGRESS NOTE TEXT:
    No existing text

ALTERNATE PROGRESS NOTE TEXT:
    No existing text
    Edit? NO//
EXCLUDE FROM PROGRESS NOTE:
SUPPRESS CHECKBOX:
Select SEQUENCE: 6//
```

SEQUENCE: 6//  
ADDITIONAL PROMPT/FORCED VALUE: PXRMM ADD TO PROBLEM LIST  
//  
OVERRIDE PROMPT CAPTION:  
START NEW LINE:  
EXCLUDE FROM PN TEXT:  
REQUIRED:  
Select SEQUENCE:  
REMINDER TERM:  
Input your edit comments.  
Edit? NO//

This taxonomy contains both diagnosis and procedure codes. The dialog is setup to display pick list for both codes. The dialog is setup to file the codes to an historical encounter.

History of Diagnosis.

Selectable Diagnoses: \* (None Selected) Comment: \_\_\_\_\_

Date: \* [ ] [ ] 2013 [ ] ... Location: [ ] Primary Diagnosis  Add to Problem List

previously done.

Selectable Procedures: \* (None Selected) Comment: \_\_\_\_\_

Date: \* [ ] [ ] 2013 [ ] ... Location: [ ] Quantity: 1 [ ]

# Glossary/Acronyms

The OIT Master Glossary is available at

[http://vaww.oed.wss.va.gov/process/Library/master\\_glossary/masterglossary.htm](http://vaww.oed.wss.va.gov/process/Library/master_glossary/masterglossary.htm)

National Acronym Directory:

<http://vaww1.va.gov/Acronyms/>

<b>Term</b>	<b>Definition</b>
AAPC	American Academy of Professional Coders
ADPAC	Automated Data Processing Application Coordinator
AHA	American Hospital Association
AHIMA	American Health Information Management Association
AIS	Automated Information Systems
AMA	American Medical Association
AMI	Acute Myocardial Infarction
AR	Accounts Receivable
ARC	Allocation Resource Center
CAC	Clinical Application Coordinator
CBO	VHA Chief Business Office
CDC	Centers for Disease Control and Prevention
CFR	Code of Federal Regulations
CMO	VHA Chief Medical Officer
CMS	Centers for Medicare and Medicaid Services
COTS	Commercial Off-The-Shelf Products
CPAC	Consolidated Patient Account Center
CPRS	Computerized Patient Record System
CPT	Current Procedural Terminology
DoD	US Department of Defense
DRG	Diagnosis Related Groups
DSS	Decision Support Services
EES	VA/VHA Employee Education System
HER	Electronic Health Record
EKG	Electrocardiogram
ESM	VHA Enterprise Systems Management Office
FSC	VHA Financial Services Center
HAC	VHA Health Administration Center
HCPCS	Healthcare Common Procedure Coding System
HHS	US Department of Health and Human Services
HIM	VHA Office of Health Information Management
HIMSS	Healthcare Information and Management Systems
HIPAA	Health Insurance Portability and Accountability Act of 1996
ICD:	International Classification of Diseases

ICD-9-CM	or ICD-9: International Classification of Diseases, 9 <sup>th</sup> Revision (Edition) Clinical Modification (includes PCS codes)
ICD-10	International Classification of Diseases, 10 <sup>th</sup> Revision (Edition) – used when pertaining to both ICD-10 code sets
ICD-10-CM	International Classification of Diseases, 10 <sup>th</sup> Revision (Edition) Clinical Modification
ICD-10-PCS	International Classification of Diseases, 10 <sup>th</sup> Revision (Edition) Procedure Coding System
IDMC	Informatics and Data Management Committee
HIS	Indian Health Services
IRM	Information Resources Management
IT	Information Technology
NCHICA	North Carolina Healthcare Information and Communications Alliance
NCHS	National Center for Health Statistics
NLM	National Library of Medicine
NLC	VHA National Leadership Council
NPCD	National Patient Care Database
OHI	VA Office of Health Information
OIT	Office of Information and Technology
ONS:	VHA Office of Nursing Services
PAS	Program Application Specialist
PCE	Patient Care Encounter
PCS	VHA Office of Patient Care Services
PD	Product Development
PMO	Project Management Office
PXRM	Clinical Reminders namespace
SARS	Severe Acute Respiratory Syndrome
SDE	VA Service Delivery and Engineering
SNOMED CT	Systematized Nomenclature of Medicine - Clinical Terms
UR	Utilization Review
VA	U.S. Department of Veterans Affairs
VAMC	Veterans Affairs Medical Center
VERA	Veterans Equitable Resource Allocation
VHA	Veterans Health Administration
VISN	Veterans Integrated Service Network
VistA	Veterans Health Information System and Technology Architecture
WEDI	Workgroup for Electronic Data Interchange
WHO	World Health Organization

# Appendix A – ScreenMan and Browser Overviews

## ScreenMan Overview

The redesigned Reminder Taxonomy Management functionality uses ScreenMan. ScreenMan is VA FileMan's *screen-oriented* data entry tool. It is an alternative to the Scrolling Mode approach. With ScreenMan, data is entered in *forms*. Each form field occupies a fixed position on the screen (instead of scrolling off). You can see many data fields at once, and use simple key combinations to edit data and move from field to field on a screen. You can also move from one screen to another like turning through the pages of a book. *For a detailed explanation of using ScreenMan, please refer to the VW FileMan Getting Started manual.*

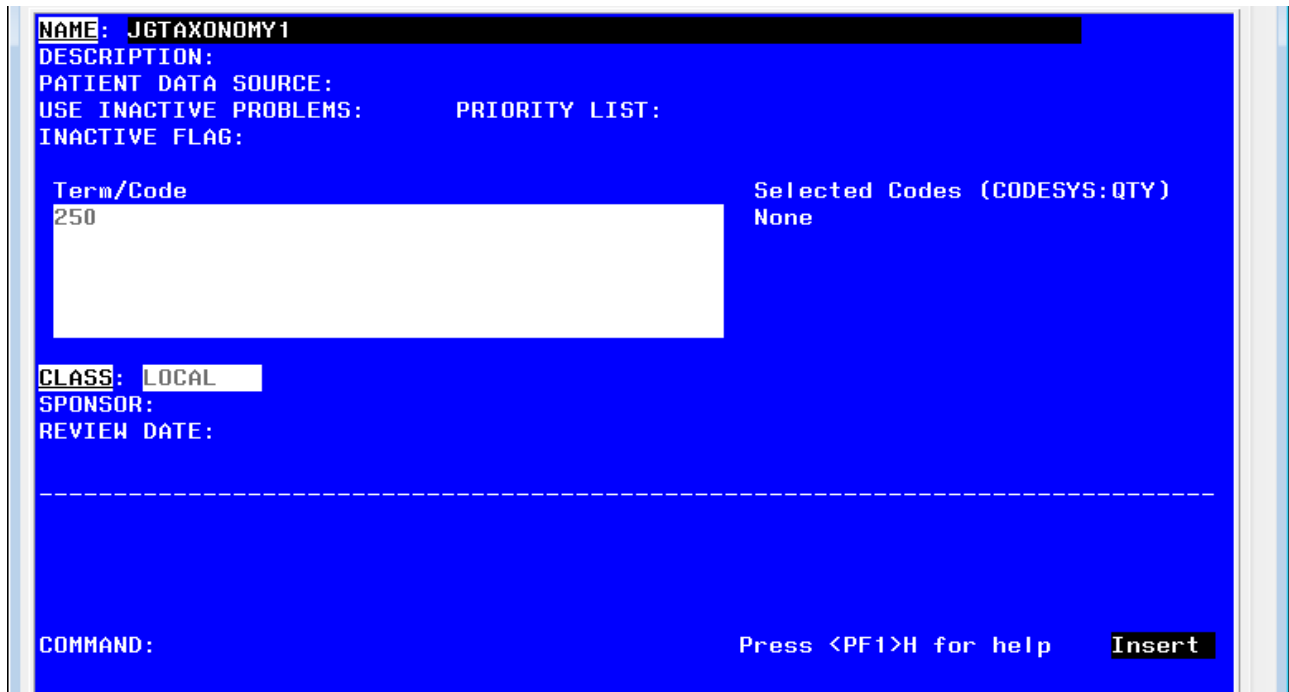
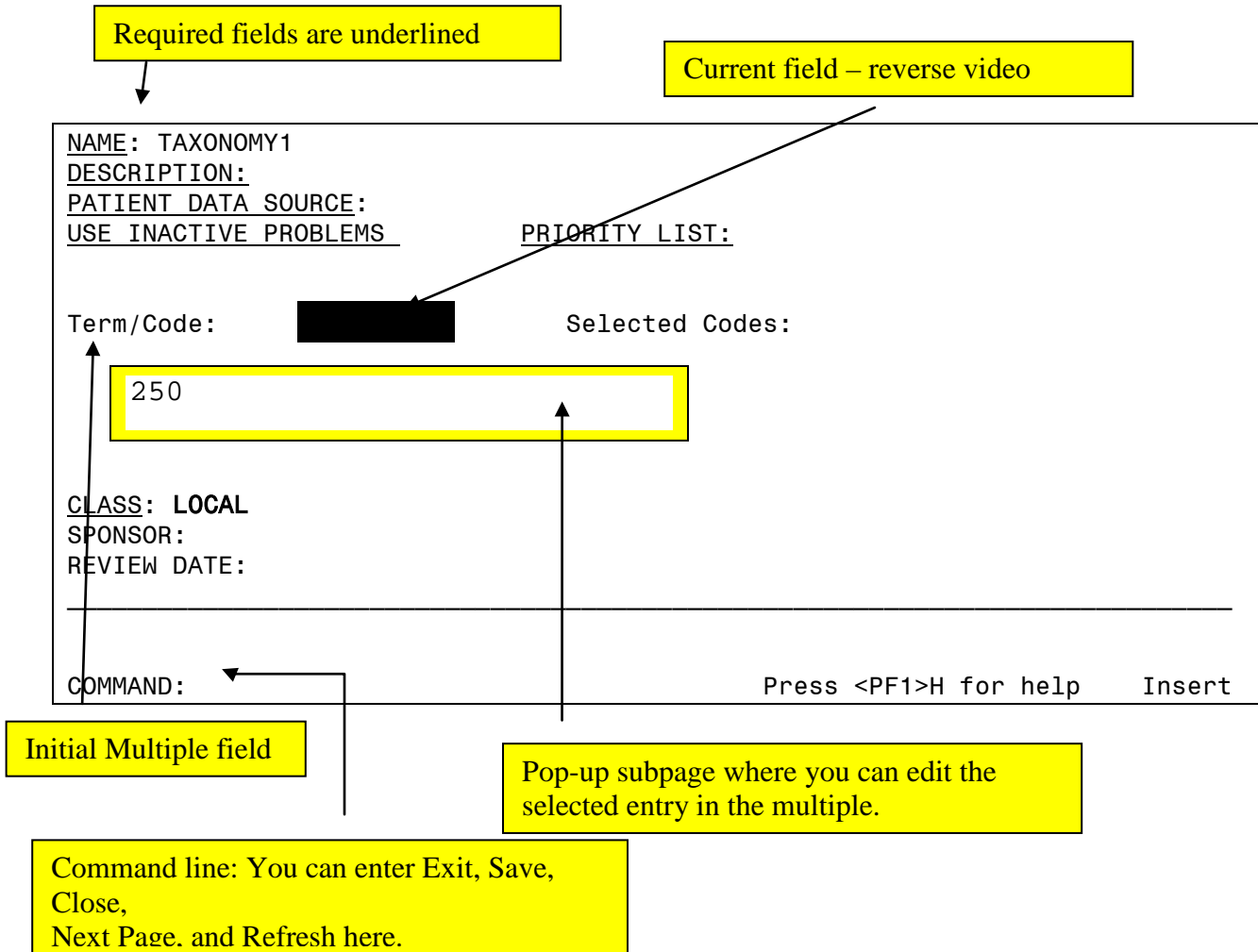


Figure 36: ScreenMan Screen

## ScreenMan Descriptions



Fields are usually composed of a *data element* and a *caption*. ScreenMan displays data elements in high intensity (boldface) and other text in regular intensity. Text that identifies a data element is called a *caption* and is usually followed by a colon (:). A caption and its associated data element are together called a *field*. Captions of *required* fields are underlined; to save any changes you make on the form, required fields *must* contain data.

## How to Navigate Between Fields and Pages

There are a number of ways you can move the cursor from field to field on a form (i.e., navigate). This is to provide you with as much flexibility as possible so that you can work quickly and efficiently with forms.

You can use the keystrokes listed in the following table to move the cursor to various fields located on a ScreenMan form:

To	Press
Move to the next field (to right or below).	<Tab>
Move to the previous field (to left or above).	<PF4>
Move to the field above.	<ArrowUp>
Move to the field below.	<ArrowDown>
Move to the next field in the pre-defined edit sequence.	<Enter>
Edit a WORD-PROCESSING field.	At field, press <Enter>
Select a Subrecord in a Multiple.	At field, press <Enter>
Move to the next block on current page.	<PF1><PF4>
Jump to a specific field.	^ followed by Caption of field and <Enter>
Jump to the Command Line.	^<Enter>
Move to next page	<PF1><ArrowDown> or <PageDown>
Move to previous page	<PF1><ArrowUp> or <PageUp>
Move to a page you specify	<PF1>P

## Saving and Exiting

To SAVE or EXIT the form, you need to reach ScreenMan's command line. It's reachable from any ScreenMan screen. To reach the command line, do any one of the following:

- Enter a caret ("^") at any field prompt.
- Press <Enter>, <Tab>, or <PF4> to move from field to field until you reach the command line.
- Press <ArrowDown> or <ArrowUp> to move the cursor from field to field downwards or upwards, until you reach the command line.

Then you can enter SAVE or EXIT at the command line (see below).

## Word-Processing Fields

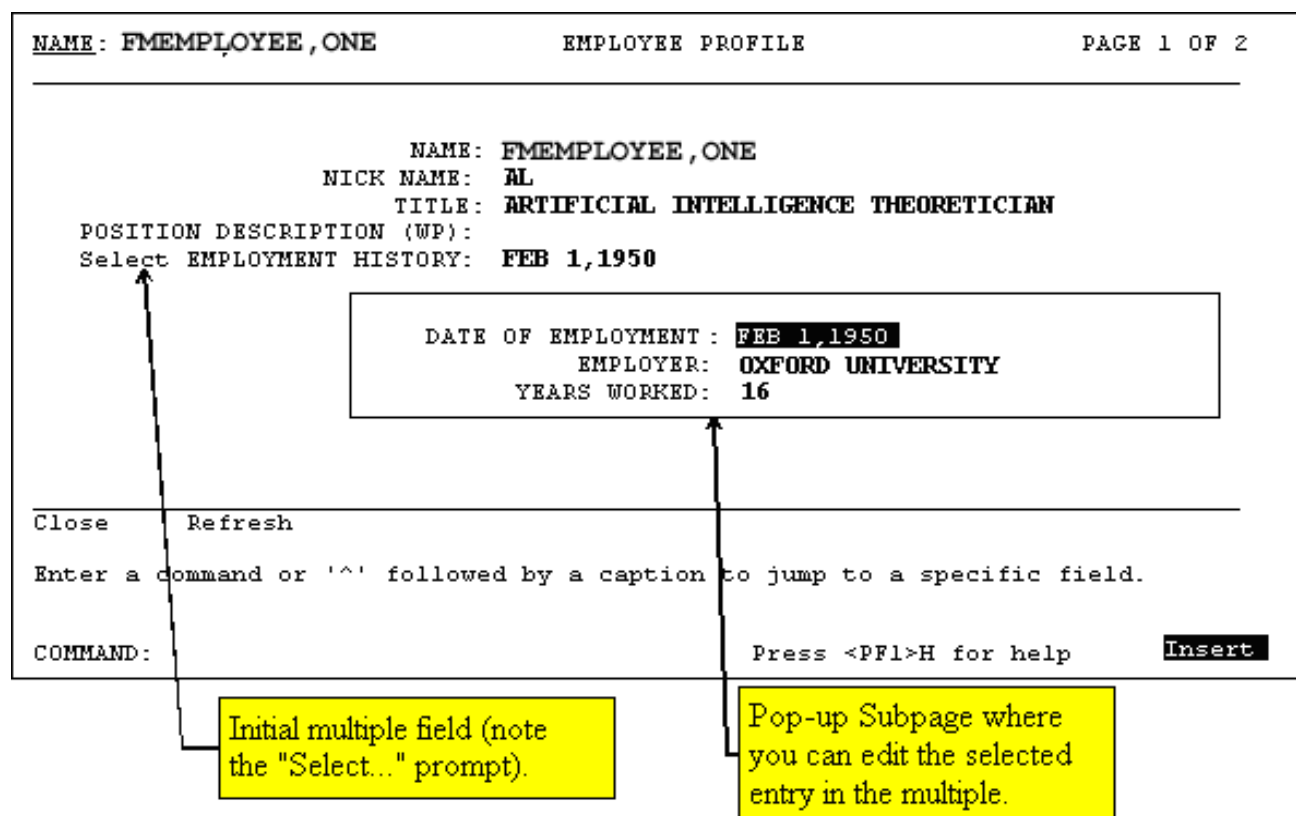
To edit or display a WORD-PROCESSING field, press the Enter/Return key at the WORD-PROCESSING field. This clears the screen and passes control to your Preferred Editor to edit the field. If you do not have a Preferred Editor, the Screen Editor is used. When you exit the editor, you return to the ScreenMan screen.



## Multiples Linked to "Pop-Up" Subpages

A Multiple field can appear on a page and be linked to a regular or "pop-up" subpage. When you navigate to the Multiple field, select a Subrecord, and press the Enter/Return key, you are taken to the subpage, which contains the fields within the Multiple.

In the following illustration, the Multiple is the field with the caption "Select EMPLOYMENT HISTORY:". When you enter "FEB 1,1950" at this field, you are taken into a "pop-up" subpage, where you can edit the fields for that particular Subrecord:



## Exiting a Subpage

While in a subpage, your only Command Line options are CLOSE and REFRESH. You cannot EXIT, Quit, or SAVE until you return to the parent page. You can return to the parent page by pressing <PF1>C or issuing the CLOSE command at the Command Line. From there, you can select another Subrecord to edit or navigate to another field.

## 6.4.1. Browser Overview

The Browser lets you view any text *on the screen* instead of *on paper*. Do this by printing your text to the **BROWSER** device instead of the HOME device or a printer.

The Browser makes it very easy to view text on screen. Its main features are:

- Scroll forwards *and backwards* through the text. This means you don't lose lines of text "off the top" of the screen, like you do when you print to the HOME device.
- Use the Search feature to find a text string and immediately jump to occurrences of the search string.
- Copy selected text from to the VA FileMan Clipboard; later, if you're editing a mail message or other WORD-PROCESSING-type field with the Screen Editor, you can paste from the clipboard.

### Shortcuts and Screen setup Tips

Both the Browser and ScreenMan have shortcuts that can save you a lot of time. Each shortcut begins by pressing the Num Lock (NL) key. (NOTE: some laptops don't have a NumLock key, so you would need to use Map Keyboard on your Reflections Utility menu to map a terminal key to the PC NumLock key.)

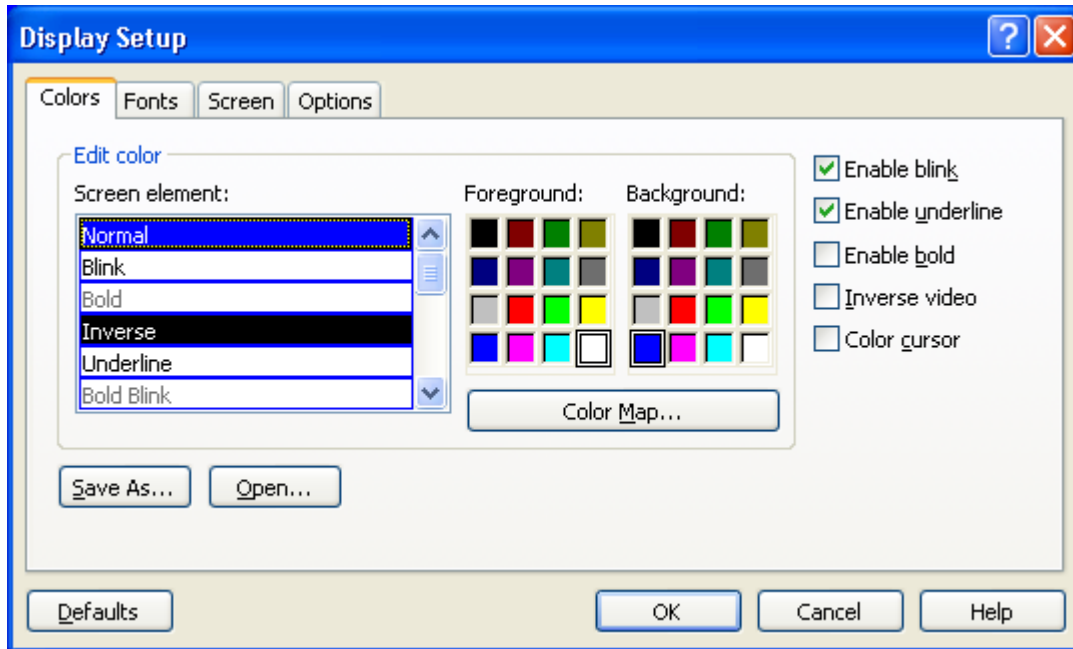
Some Browser actions:

- (NL)B – go to bottom
- (NL)E – exit
- (NL)F – find
- (NL)H – help
- (NL)Q – quit
- (NL)T – go to top

Some ScreenMan shortcuts:

- (NL)C – close a screen
- (NL)E – exit and save changes
- (NL)H – help
- (NL)Q – exit and do not save changes
- (NL)Z – zoom editor

Your Reflections session setup makes a difference in the appearance of the ScreenMan display. The default for the screen element Normal is a white background and black foreground. Choosing a background color other than white and a foreground color that works well with the background color will provide a more readable ScreenMan display.



NOTE: For taxonomy inquiry print to display properly in Reflections, the setup must have Save from Scrolling Regions checked. Sequence is: Setup => Display => Screen => Display Memory Advanced.

### Example

