

March 2009

This distribution contains change pages for patch MD*1.0*19 of the Clinical Procedures 1.0 Hemodialysis Module User Manual.

Patch MD*1.0*19 pages:

Replace Pages:

Title Page
Revision History
Table of Contents
4-3 to 4-6
5-3 to 5-4
Index

With Pages:

Title Page
Revision History
Table of Contents
4-3 to 4-6
5-3 to 5-6
Index



CLINICAL PROCEDURES V. 1.0 HEMODIALYSIS MODULE

USER MANUAL

Patch MD*1.0*6

May 2008

Revised March 2009

for MD*1.0*19

Department of Veterans Affairs
Health Systems Design and Development
Provider Systems

Revision History

Description	Date	Author
Patch MD*1.0*6 released.	May 2008	Alfred Bustamante
¹ Patch MD*1.0*19 released. Added notes regarding Recent Postings & Infectious Diseases (Chapter 4). Added list of lab tests that display on the Rx and Lab tab (Chapter 5).	March 2009	Alfred Bustamante

¹ MD*1.0*19 March 2009 Patch 19 release added.

Table of Contents

1. Introduction.....	1-1
Intended Audience	1-1
Related Manuals.....	1-1
Product Benefits	1-2
2. Ordering a Hemodialysis Procedure.....	2-1
Requirements for CP Manager.....	2-1
Ordering a Dialysis Procedure in CPRS.....	2-2
Checking in a New Study Using CP User	2-9
3. Working with Hemodialysis.....	3-1
Requirements for the User	3-1
Opening Hemodialysis	3-1
Selecting a Patient	3-2
Enabling/Disabling a Patient Record	3-5
Study List Right-Click Menu.....	3-6
Study List Command Buttons	3-7
Review (Read-Only) Study Viewing	3-7
Hemodialysis Patient Data Screen Areas.....	3-9
Title Bar	3-9
Menu Bar	3-9
Patient Info Bar	3-14
Patient Data Screen Buttons.....	3-15
Tabs/Options Screen	3-15
Status Line	3-16
Display Application Version.....	3-16
Defining the Tabs of the Hemodialysis Patient Data Screen.....	3-17
Cover Tab.....	3-18
Rx and Lab Tab.....	3-19
Pre-Treatment Tab	3-20
Access Tab	3-21
Flowsheet Tab.....	3-22

Post-Treatment Tab.....	3-23
Summary Tab.....	3-24
Submit Tab.....	3-25
4. Editing/Viewing Information on the Cover Tab	4-1
Current Treatment Information	4-1
Recent Postings & Infectious Diseases	4-4
Treatment History (Vascular Access Monitoring).....	4-5
Past Treatment Data.....	4-6
5. Entering Dialysis Prescription and Labs	5-1
Dialysis Rx	5-2
Lab Results	5-2
Displaying Lab Results.....	5-2
Comments	5-5
Comments Business Rules.....	5-6
6. Entering Pre-Treatment Information.....	6-1
Pre-Treatment Assessment	6-2
Pain Assessment	6-3
Comments	6-6
7. Entering Access Information	7-1
Access Sites	7-3
Adding a New Site.....	7-3
Assessing and Selecting a Site for Use.....	7-5
Removing a Site.....	7-6
Deleting a Site.....	7-8
Access Points Summary.....	7-8
Access Site Details.....	7-9
Current Site Status	7-9
Sites Detail.....	7-10
Comments	7-11
8. Entering Flowsheet Information	8-1
Flowsheet	8-2
Flowsheet Buttons.....	8-3
Flowsheet Right-Click Menu.....	8-4

Adding a TIU Note.....	8-5
Creating TIU Note Templates.....	8-7
Performing the Falls Assessment.....	8-8
Reviewing TIU Note Text.....	8-9
Medication List.....	8-10
Medication List Columns.....	8-11
Comments	8-12
9. Entering Post-Treatment Information.....	9-1
Post-Treatment Assessment	9-2
Pain Assessment	9-2
Falls Risk Evaluation.....	9-2
Comments	9-2
10. Viewing Summary Information.....	10-1
Treatment Summary	10-2
Clinic/Location	10-2
Healthcare Providers	10-3
Procedures and Diagnoses (CPT/ICD Codes)	10-5
Diagnosis.....	10-5
Procedures.....	10-6
Service Connected Conditions	10-7
Confirming PCE Data Without Changing Anything	10-8
Comments	10-8
11. Submitting the Study	11-1
Treatment Status Report.....	11-2
Alternate Treatment Status Report Display.....	11-3
Viewing Additional Reports.....	11-4
Submitting the Study	11-5
Viewing Submitted Study Results	11-7
Viewing Study Results in CPRS.....	11-7
Viewing Study Results in CP User	11-9
12. Attaching Results/External Attachments to a Study Using CP User	12-1
13. Site Configurable Options.....	13-1
Displaying the Options Screen.....	13-1

Exiting the Options Screen.....	13-1
Customizing Drop-down List Items	13-2
Adding a TIU Note Title.....	13-3
Verifying the TIU Note Title Addition.....	13-4
Adding a List Item	13-5
Deleting List Items.....	13-7
Saving Custom Lists	13-8
Loading Custom Lists.....	13-9
Preferences.....	13-9
Preferences (System vs. User)	13-10
Configuring System Preferences	13-10
Assigning System Preferences to Users.....	13-14
Editing User Preferences.....	13-16
ADMIN ONLY Rights.....	13-17
Report Templates.....	13-18
Editing a Report Template	13-18
Creating a New Report Template	13-24
Note Templates.....	13-26
Editing Data Fields	13-27
14. Data Tables	14-1
Administrators	14-1
Adding Administrators.....	14-2
Application Events	14-3
Study Events	14-3
Defining Application Events Screen Buttons	14-4
15. Troubleshooting	15-1
Preventing PCE “Data Loss” in the Hemodialysis Application	15-1
Reloading Flowsheet Data.....	15-3
Resolving “No Note Text” Error	15-5
Issue Description.....	15-5
Using More Than One Dialysis Device During a Treatment	15-6
16. Glossary	16-1
17. Index.....	17-1

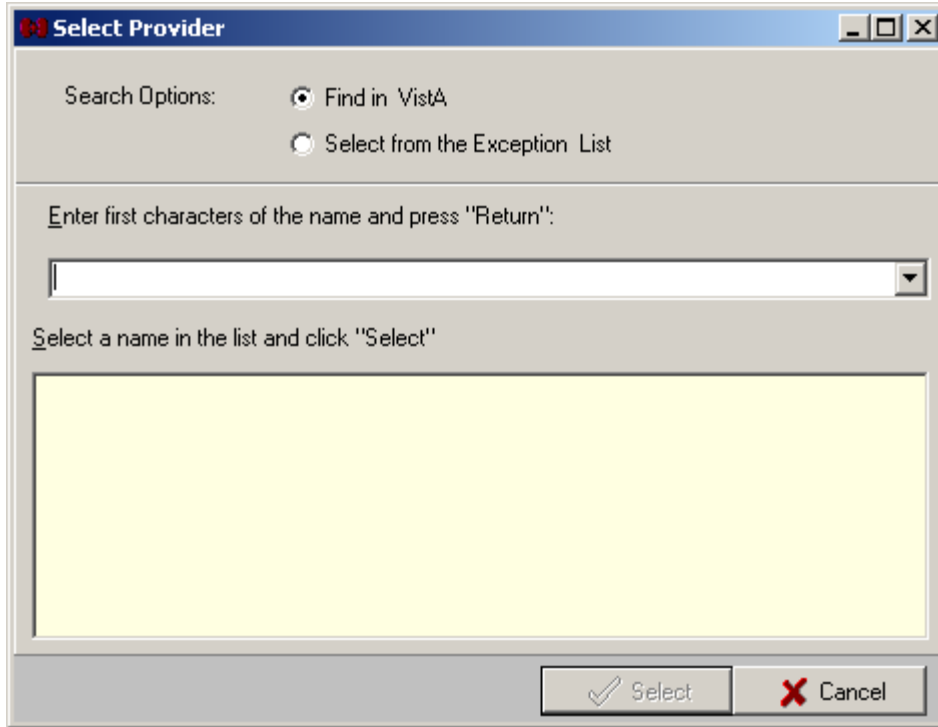


Figure 4-3

- Select the **Find in VistA** radio button.
- Type the first letters of the provider's last name, then press **<Enter>** to populate the list.
- Click the provider's name from the list, then click **Select**. The Select Provider window closes, and the selected provider's name displays in the Attending Nephrologist field.

Method 2: Select from the Exception List (Custom Data List)

Use method 2 only if the desired provider's name is not obtainable from VistA.

- An ADMIN user must first add the desired provider's name to the Attending Nephrologists custom data list. (See "Customizing Drop-down List Items.")
- At the Cover tab, unmark the **Read Only** checkbox.
- Click the **dropdown arrow** to the right of the Attending Nephrologist field. The Select Provider window displays (Figure 4-3).
- Select the **Select from the Exception List** radio button. The large field displays the names added to the Attending Nephrologists custom data list.
- Click one of the **names** (besides "- Other -") in the list, then click **Select**. The Select Provider window closes, and the selected provider's name displays in the Attending Nephrologist field.

Method 3: Add a Name On the Fly

Use method 3 only if the desired provider's name is not obtainable from VistA and an ADMIN user is not available to add the provider's name to the site's custom data list..

- Unmark the **Read Only** checkbox.
- Click the **dropdown arrow** to the right of the Attending Nephrologist field. The Select Provider window displays (Figure 4-3).
- Select the **Select from the Exception List** radio button.
- Click "**- Other -**" from the name list, then click **Select**. The Select Provider popup displays (Figure 4-4)..

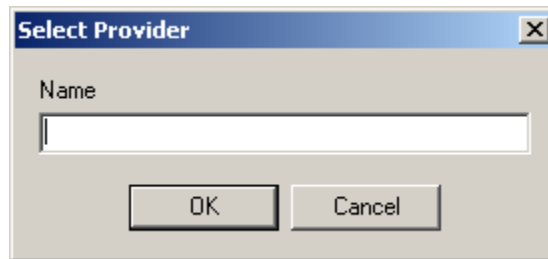


Figure 4-4

- Type the provider's name in the **Name** field, then click **OK**. The Select Provider popup closes, and the provider's name displays in the Attending Nephrologist field.

Visit Schedule: Check the checkboxes for the days that represent the patient's treatment schedule, such as Monday, Wednesday, Friday.

Transplant Status: Indicate if this patient is a candidate for transplant or not by selecting the appropriate radio button to the right of the **Transplant Status** label. If you select **Candidate**, indicate if a workup is in progress or if the patient has been referred to a transplant center.

Recent Postings & Infectious Diseases

Allergies, Clinical Warnings, Advanced Directives, and Infectious Diseases are listed in the Recent Postings & Infectious Diseases area (Figure 4-1).

¹Notes:

Clinical Warnings: Only the date and time display, not the full text of the clinical warnings.

Advanced Directives: The display shows Yes or No to indicate whether advanced directives exist.

Infectious Diseases: This area does not provide data for the following three diseases: Hepatitis B Surface Antigen, Hepatitis B Surface Antibody, and Hepatitis C Surface Antibody. Check the Lab Results area on the Rx and Lab tab for data pertaining to these three diseases.

¹ MD*1.0*19 March 2009 Added notes regarding Recent Postings & Infectious Diseases

Alternate Display of Recent Postings & Infectious Diseases

An alternate display of Recent Postings & Infectious Diseases is available. Figure 4-1 shows what the Recent Postings & Infectious Diseases area looks like if the “Show Infectious Diseases information as Tree” parameter is set to FALSE. If you set the “Show Infectious Diseases information as Tree” parameter to TRUE, it displays as shown in Figure 4-5.

When this parameter is set to TRUE, click the plus sign (+) next to the infectious disease to view data for that disease.

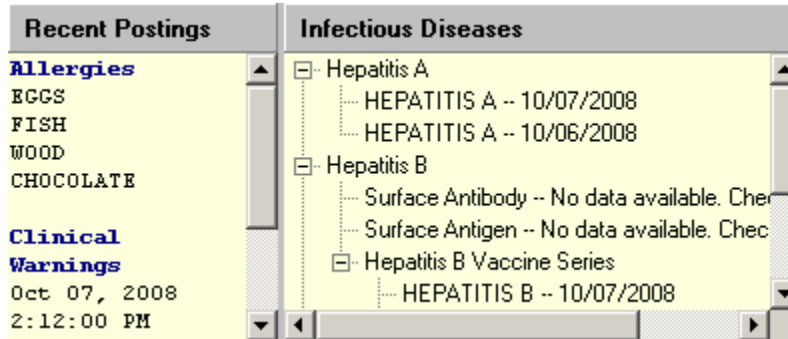


Figure 4-5

Treatment History (Vascular Access Monitoring)

You can view the latest information on vascular access monitoring in the **Treatment History** section of the screen. This information is based on vascular access monitoring information entered into this Hemodialysis application, so if you are using this application for the first time, no vascular access monitoring information will display.

To change the maximum number of past treatments that will display in the list, change the **Study Load Limit** value at the Options screen. (See “Configuring System Preferences.”)

Treatment History						
Check In Date	IA BF	APV @ 0	VP @ 0	VP @ 200	Study #	Comments
09/13/2005					2797	
03/06/2006	400	250	40	80	2946	
04/13/2006					3038	
04/13/2006					3039	
05/10/2006					3062	

Figure 4-6

Past Treatment Data

You can view data for a past treatment by selecting its row in the **Treatment History** area. Data for the selected treatment displays in the view below the Treatment History area (Figure 4-7).

Information on past treatments is based on treatment information entered into this Hemodialysis application, so if you are using this application for the first time, no past treatment data displays.

The information listed below can appear in this area (each on its own tab), depending on what has been entered for the particular study. If a tab contains a TIU note, the TIU note number displays on the tab. Click a tab to view the record.

- **Summary:** This section displays Pre- and Post- vitals, treatment duration, and dialysis totals and averages (Figure 4-7).
- **TIU note** (yellow icon): The yellow icon indicates a comment saved as a separate TIU note.
- **TIU note** (white icon): The white icon indicates a Falls Risk Evaluation that is saved as a separate TIU note.
- **Results** (green icon): The Results tab, which displays the Summary Report, will only display for studies that have already been submitted.

Selected 3640 01/14/2008 Print				
Summary TIU 5513 TIU 5515 Results (TIU 5523)				
Vital	Pre-	Post-		Duration
BP Seated:	123/23	123/23	mm Hg	Started: 08:00
BP Standing:	123/23	123/23	mm Hg	Finished: 12:00
Pulse Seated:	34	23	BPM	Duration (Instrument):
Pulse Standing:	23	22	BPM	Duration (Adjusted): 04:00
Temperature:	98	98.1	F	
Weight:	74	70	Kg	
Goal-Weight:		70	Kg	
Totals and Averages				
Total UF:	7		Mean Dialysis Temp:	7
Total LP:	7		Mean Conductivity:	7
Mean UFR:	7		Total KT:	7
Mean TMP:	7		Total KT/V:	7
Average BFR:	7		URR:	7
Average DFR:	7		Estimated Urea Vol:	7

Figure 4-7

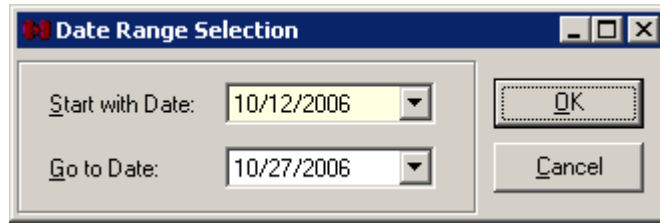


Figure 5-3

Note: The shorter the selected time period, the faster the display populates with data.

The selected date range displays in the toolbar, to the left of the Period drop-down list, and the lab data displays just below (Figure 5-4).



Figure 5-4

Note: When you leave the Rx and Lab tab, the lab results are cleared. To see the results again, reselect a time period from the Period drop-down list.

¹Local tests mapped to the following National Lab Tests will display in this area:

National Lab Code	Lab Test
84520	BUN (Blood Urea Nitrogen)
82565	CREATININE
84295	SODIUM
84140	POTASSIUM
82435	CHLORIDE
82830	CARBON DIOXIDE
82310	CALCIUM
84100	PHOSPHORUS
82040	ALBUMIN
84455	AST (Aspartate Aminotransferase)
84465	ALT (Alanine Aminotransferase)
84075	ALKALINE PHOSPHATASE
82250	BILIRUBIN
83020	HEMOGLOBIN

¹ MD*1.0*19 March 2009 Added list of Lab Results that display on the Rx and Lab tab.

85055	HEMATOCRIT
85569	WBC (White Blood Count)
86806	PLATELETS
83057	HEMOGLOBIN A1C
82466	CHOLESTEROL
84480	TRIGLYCERIDES
82370	FERRITIN
83540	IRON
82060	TRANSFERRIN
84012	PARATHYROID HORMONE
81512	ALUMINUM
89068	HEPATITIS B SURFACE ANTIGEN
89065	HEPATITIS B SURFACE ANTIBODY
89067	HEPATITIS B SURFACE ANTIBODY
82013	HEPATITIS B SURFACE ANTIBODY
89095	HEPATITIS B SURFACE ANTIBODY
89127	HEPATITIS B SURFACE ANTIBODY
89128	HEPATITIS B SURFACE ANTIBODY
87398	HEPATITIS B SURFACE ANTIBODY
89699	HEPATITIS B SURFACE ANTIBODY
89070	HEPATITIS C ANTIBODY
87261	FLU

Comments


Add notes in the **Comments** section at the bottom of the screen. Comments can be locked so that no one (including the creator of the note) can modify them.

To add a Comment, do the following:

1. Click the **New** button on the Comments toolbar. The Comment window displays and cursor focus is in the Text field.
2. Type your comment in the **Text** field, then click **Save**. The note is not yet locked. It may still be edited or deleted.
3. To lock the note, do one of the following:
 - **Click the *Save* button after you have typed your note:** This immediately saves and locks the note. The note becomes a permanent part of this treatment.
 - **Select a different patient or exit Hemodialysis (without clicking Lock):** When you return to the current tab, the comment is locked. You may no longer edit the note, and the note becomes a permanent part of this treatment.

Comments Business Rules

The following rules govern the way comments work:

1. A new comment is initially UNLOCKED.
 2. A comment remains UNLOCKED until one of the following happens:
 - User clicks the Save button
 - User selects another patient
- Note:** Switching between tabs does not change the locked status of a comment.
3. Locking the comment prevents future updates for the comment.
 4. A LOCKED comment has a special indicator (padlock icon). 
 5. A LOCKED comment CANNOT be unlocked.
 6. An UNLOCKED comment can be updated, but only by author of the note.
 7. An UNLOCKED comment can be deleted.
 8. Comments cannot be invalidated. If you entered a comment in error and then locked it, add an additional comment to describe the situation.

17. Index

- A**
- Access Site Detail, 7-9
 - Access Sites, 7-3
 - Access tab, 3-21, 7-1
 - Adding a TIU Note, 8-5
 - Adding Administrators, 14-2
 - ADMIN ONLY Rights, 13-17
 - Administrators, 14-1
 - Alternate Treatment Status Report, 11-3
 - Application Events, 14-3
 - Assigning System Preferences to Users, 13-14
 - Attaching Results to a Study, 11-5, 12-1
- B**
- benefits, 1-2
- C**
- checking in
 - studies, 2-1, 2-9, 5-1
 - Clinic/Location, 10-2
 - Comments, 5-5
 - Comments Business Rules, 5-6
 - Configurable Options, 13-1
 - Configuring System Options, 13-10
 - Configuring User Options, 13-14
 - Confirming PCE Data, 10-1, 10-8
 - consult procedures
 - ordering, 2-2
 - Cover Tab, 4-1
 - CP process, 2-1, 6-1
 - CP User, 3-1
 - Icons, 3-15
 - opening, 3-1
 - selecting a patient, 3-2
 - CPRS
 - ordering a consult procedure, 2-1, 2-2
 - Current Treatment Information, 4-1
 - Customizing Dropdown List Items, 13-2
- D**
- Data Tables, 14-1
 - defining the CP User window, 3-17
 - Diagnoses, 10-1, 10-5
 - Display Application Version, 3-16
 - Dropdown List Items
 - Customizing, 13-2
- E**
- Editing Data Fields, 13-27
 - Enabling/Disabling a Patient Record, 3-5
 - Entering Flowsheet Information, 8-1
- F**
- Falls Assessment, 8-8
 - Flowsheet, 8-2
 - Flowsheet tab, 3-22, 8-1
- G**
- Glossary, 16-1
- H**
- Healthcare Providers, 10-3
- I**
- images
 - displaying, 7-1
 - Infectious Diseases, 4-4
 - intended audience, 1-1
 - introduction, 1-1
- L**
- Lab Data
 - displaying, 5-2
 - Lab Results, 5-2
- M**
- Medication List, 8-10
- N**
- Note Templates, 13-26
- O**
- Options Screen
 - Displaying, 13-1
 - Options Screen Buttons, 14-4
 - ordering
 - consult procedures, 2-2
 - Overall Comments, 10-8
- P**
- Past Treatment Parameters, 4-6
 - patient
 - selecting in CP User, 3-2
 - Patient Info Bar, 3-14
 - Post-Assessments, 9-2
 - Post-Pain Assessment, 9-2
 - Post-Treatment Information, 9-1
 - Post-Treatment tab, 3-23, 9-1

Index

Pre-Assessments, 6-2
Preferences, 13-9
Pre-Pain Assessment, 6-3
Pre-Treatment tab, 3-20, 6-1
Preventing PCE Data Loss, 15-1
Procedures, 10-1, 10-5
Providers, 10-3

R

Recent Postings, 4-4
related manuals, 1-1
Reloading Flowsheet Data, 15-3
Report Template, 13-18
 Creating new, 13-24
 Editing, 13-18
Requirements for CP Manager, 2-1
Requirements for the User, 3-1
Resolving “No Note Text” Error, 15-5
Review (Read Only) Study Viewing, 3-7
Rx and Lab Tab, 3-19, 5-1

S

Saving Custom Lists, 13-8
Screen Areas
 Patient Data, 3-9
Site Configuration, 3-16, 13-1
Status Line, 3-16
study
 checking in, 2-1, 2-9
Study Events, 14-3
Study List Command Buttons, 3-7
Study List Menus, 3-6
Submit tab, 3-25, 11-1
Submitting the Study, 11-1, 11-5

Summary tab, 3-24, 10-1

T

Tabs, 3-1, 3-15, 3-17
TIU Note Templates
 creating, 8-7
TIU Note Text
 reviewing, 8-9
TIU Note Title
 adding, 13-3
 verifying creation of, 13-4
Transplant Status, 4-4
Treatment History, 4-5
Treatment Status Report, 11-2
Treatment Summary, 10-2
Troubleshooting, 15-1

U

Update Diagnosis, 10-5
Update Procedures, 10-6

V

Vascular Access Monitoring, 4-5
Viewing Additional Reports, 11-4
viewing results, 7-1
Viewing Study Results, 11-7
Viewing Summary Information, 10-1

W

Working with Hemodialysis, 3-1